

HINDU COLLEGE :: GUNTUR



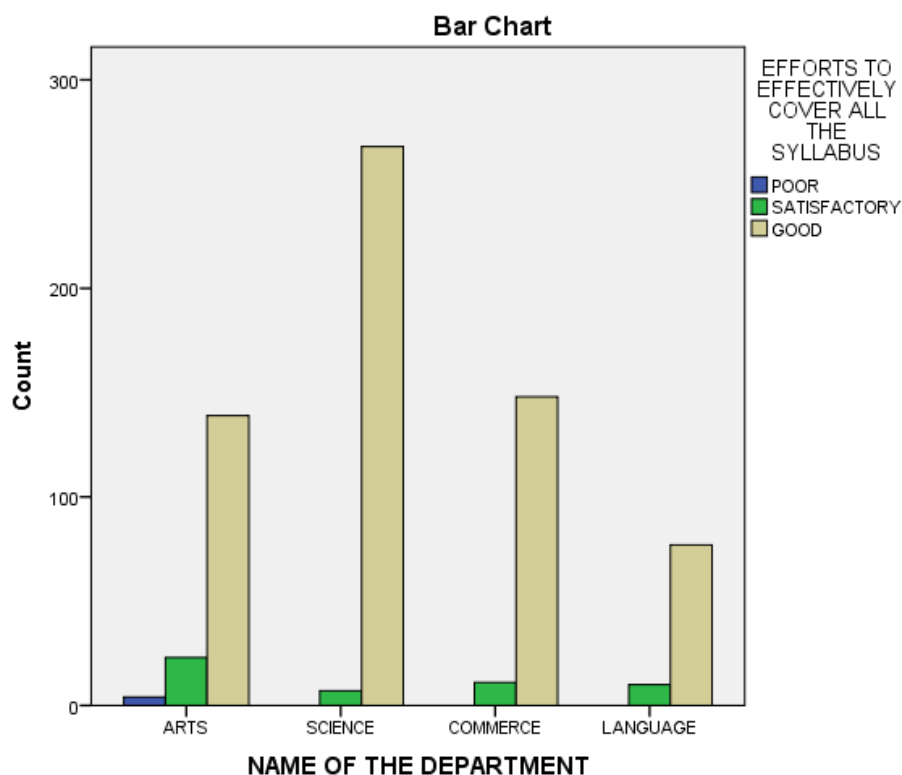
1.4.1

**Student Feedback
2018-19**

2018-19 GROUP-WISE FEED BACK

The group-wise distribution of sample by 'Efforts to effectively cover all the Syllabus' by the faculty is collected and presented through Table-1.

TABLE-1: EFFORTS TO EFFECTIVELY COVER ALL THE SYLLABUS						
		EFFORTS TO EFFECTIVELY COVER ALL THE SYLLABUS			Total	
		POOR	SATISFACTORY	GOOD		
	ARTS	4	23	139	166	
		0.6%	3.3%	20.2%	24.2%	
	SCIENCE	0	7	268	275	
		0.0%	1.0%	39.0%	40.0%	
	COMMERCE	0	11	148	159	
		0.0%	1.6%	21.5%	23.1%	
	LANGUAGE	0	10	77	87	
		0.0%	1.5%	11.2%	12.7%	
	Total		4	51	632	687
			0.6%	7.4%	92.0%	100.0%



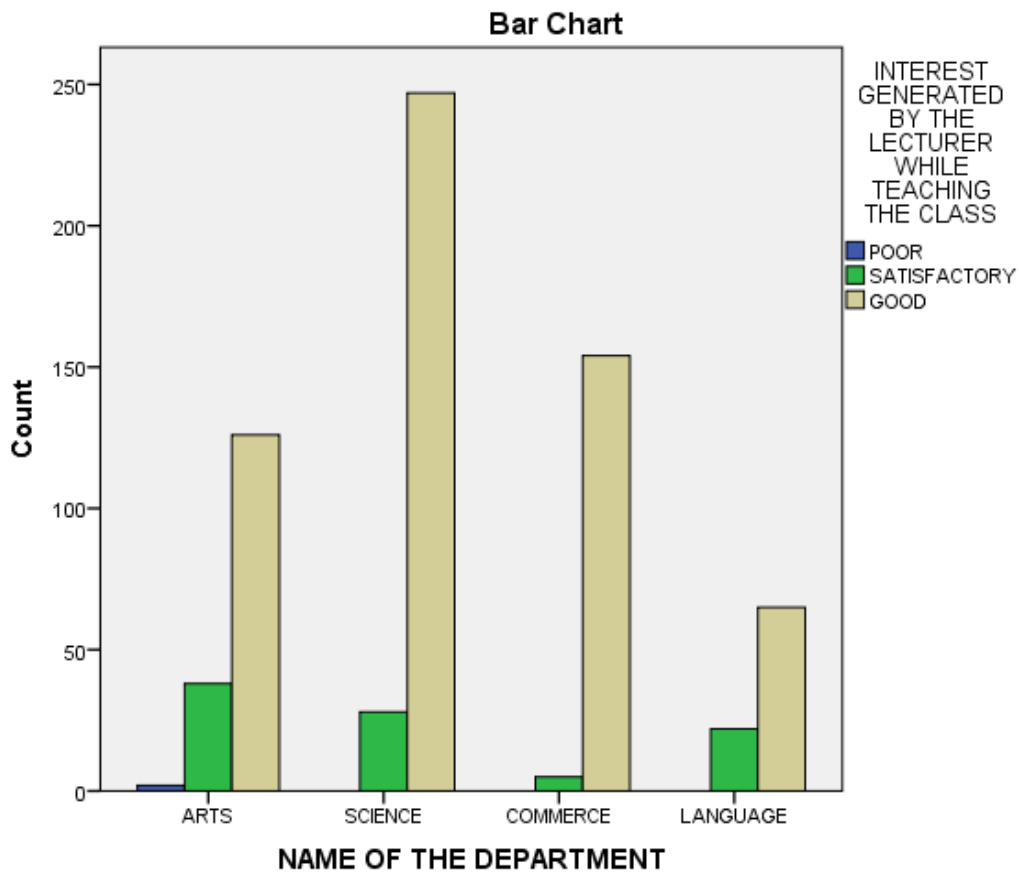
The table shows that only 0.6 per cent of the sample responded 'Poor' and 7.4 percent expressed 'Satisfied'. All the remaining 92 per cent of the sample responded 'Good'. With respect to department wise analysis the results in Table-2 shows that, in case of Food technology, Horticulture, Microbiology, Physics, Mathematics, Statistics, Zoology, Botany, Chemistry, Computer applications and Economics all the students responded 'Good'.

DEPARTMENT	Table -2 : EFFORTS TO EFFECTIVELY COVER ALL THE SYLLABUS			Total
	POOR	SATISFACTORY	GOOD	
FOOD TECHNOLOGY	0	0	28	28
	0.00%	0.00%	4.40%	4.10%
GEOLOGY	0	1	14	15
	0.00%	2.00%	2.20%	2.20%
HINDI	1	4	26	31
	25.00%	7.80%	4.10%	4.50%
HISTORY	2	4	15	21
	50.00%	7.80%	2.40%	3.10%
HOME SCIENCE	0	1	23	24
	0.00%	2.00%	3.60%	3.50%
HORTICULTURE	0	0	22	22
	0.00%	0.00%	3.50%	3.20%
MATHEMATICS	0	5	29	34
	0.00%	9.80%	4.60%	4.90%
MICROBIOLOGY	0	0	10	10
	0.00%	0.00%	1.60%	1.50%
PHYSICS	0	0	28	28
	0.00%	0.00%	4.40%	4.10%
POLITICS	1	11	21	33
	25.00%	21.60%	3.30%	4.80%

SANSKRIT	0	1	16	17
	0.00%	2.00%	2.50%	2.50%
STATISTICS	0	0	23	23
	0.00%	0.00%	3.60%	3.30%
TELUGU	0	2	20	22
	0.00%	3.90%	3.20%	3.20%
ZOOLOGY	0	0	10	10
	0.00%	0.00%	1.60%	1.50%
SPECIAL ENGLISH	0	1	17	18
	0.00%	2.00%	2.70%	2.60%
BOTANY	0	0	30	30
	0.00%	0.00%	4.70%	4.40%
CHEMISTRY	0	0	32	32
	0.00%	0.00%	5.10%	4.70%
COMMERCE	0	1	115	116
	0.00%	2.00%	18.20%	16.90%
COMPUTER SCIENCE	0	1	50	51
	0.00%	2.00%	7.90%	7.40%
COMPUTER APPLICATIONS	0	10	27	37
	0.00%	19.60%	4.30%	5.40%
ECONOMICS	0	2	35	37
	0.00%	3.90%	5.50%	5.40%
ENGLISH	0	7	41	48
	0.00%	13.70%	6.50%	7.00%
	4	51	632	687
	100.00%	100.00%	100.00%	100.00%

Table-3 shows the results on the question ‘Interest generated by the Lecturer while teaching the class.

TABLE-3: INTEREST GENERATED BY THE LECTURER WHILE TEACHING THE CLASS						
		INTEREST GENERATED BY THE LECTURER WHILE TEACHING THE CLASS			Total	
		POOR	SATISFACTORY	GOOD		
NAME OF THE DEPARTMENT	ARTS	Count	2	38	126	166
		% of Total	0.3%	5.5%	18.3%	24.2%
	SCIENCE	Count	0	28	247	275
		% of Total	0.0%	4.1%	36.0%	40.0%
	COMMERCE	Count	0	5	154	159
		% of Total	0.0%	0.7%	22.4%	23.1%
	LANGUAGE	Count	0	22	65	87
		% of Total	0.0%	3.2%	9.5%	12.7%
Total		Count	2	93	592	687
		% of Total	0.3%	13.5%	86.2%	100.0%



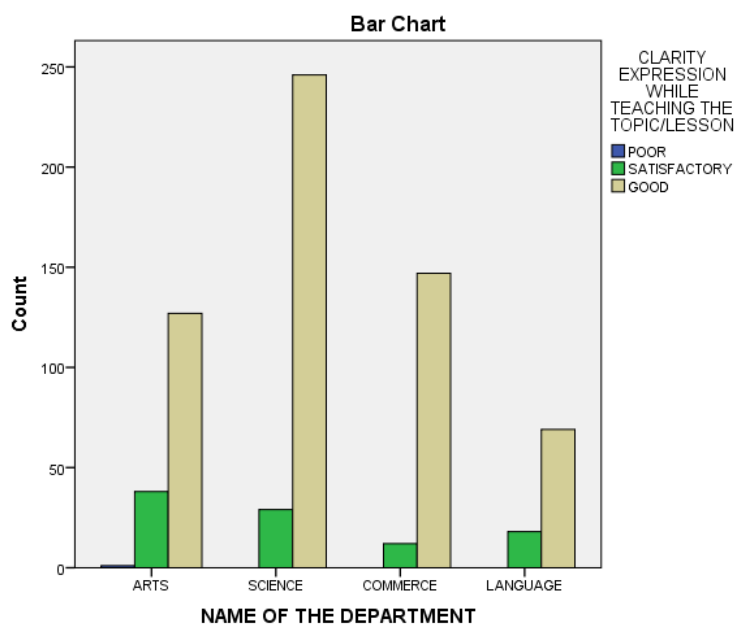
The information proves that 86 per cent of the faculty are very much generating interest with 'Good' grade and 13.5 per cent with 'Satisfactory' grade. In case of department wise analysis, table-4 proves that most of the students responded with 'satisfactory' in case of History, Politics, Telugu and English. In Zoology all the students ranked as 'Good'

DEPARTMENT	Table -4 : INTEREST GENERATED BY THE LECTURER WHILE TEACHING THE CLASS			Total
	POOR	SATISFACTORY	GOOD	
FOOD TECHNOLOGY	0	3	25	28
	0.00%	3.20%	4.20%	4.10%
GEOLOGY	0	2	13	15
	0.00%	2.20%	2.20%	2.20%
HINDI	0	7	24	31
	0.00%	7.50%	4.10%	4.50%
HISTORY	0	9	12	21
	0.00%	9.70%	2.00%	3.10%
HOME SCIENCE	0	2	22	24
	0.00%	2.20%	3.70%	3.50%
HORTICULTURE	0	3	19	22
	0.00%	3.20%	3.20%	3.20%
MATHEMATICS	0	2	32	34
	0.00%	2.20%	5.40%	4.90%
MICROBIOLOGY	0	1	9	10
	0.00%	1.10%	1.50%	1.50%
PHYSICS	0	3	25	28
	0.00%	3.20%	4.20%	4.10%
POLITICS	2	12	19	33
	100.00%	12.90%	3.20%	4.80%
SANSKRIT	0	2	15	17
	0.00%	2.20%	2.50%	2.50%

STATISTICS	0	2	21	23
	0.00%	2.20%	3.50%	3.30%
TELUGU	0	6	16	22
	0.00%	6.50%	2.70%	3.20%
ZOOLOGY	0	0	10	10
	0.00%	0.00%	1.70%	1.50%
SPECIAL ENGLISH	0	1	17	18
	0.00%	1.10%	2.90%	2.60%
BOTANY	0	4	26	30
	0.00%	4.30%	4.40%	4.40%
CHEMISTRY	0	3	29	32
	0.00%	3.20%	4.90%	4.70%
COMMERCE	0	3	113	116
	0.00%	3.20%	19.10%	16.90%
COMPUTER SCIENCE	0	6	45	51
	0.00%	6.50%	7.60%	7.40%
COMPUTER APPLICATIONS	0	3	34	37
	0.00%	3.20%	5.70%	5.40%
ECONOMICS	0	5	32	37
	0.00%	5.40%	5.40%	5.40%
ENGLISH	0	14	34	48
	0.00%	15.10%	5.70%	7.00%
	2	93	592	687
	100.00%	100.00%	100.00%	100.00%

The data on ‘Clarity expression while teaching the topic/lesson’ by the faculty is submitted through Table-5.

TABLE-5: NAME OF THE DEPARTMENT * CLARITY EXPRESSION WHILE TEACHING THE TOPIC/LESSON						
		CLARITY EXPRESSION WHILE TEACHING THE TOPIC/LESSON			Total	
		POOR	SATISFACTORY	GOOD		
NAME OF THE DEPARTMENT	ARTS	1	38	127	166	
		0.1%	5.5%	18.5%	24.2%	
	SCIENCE	0	29	246	275	
		0.0%	4.2%	35.8%	40.0%	
	COMMERCE	0	12	147	159	
		0.0%	1.7%	21.4%	23.1%	
	LANGUAGE	0	18	69	87	
		0.0%	2.6%	10.0%	12.7%	
	Total		1	97	589	687
			0.1%	14.1%	85.7%	100.0%



It can be observed from the table that, except 01 student, all the remaining are responded positively. 85.7 percent replied as ‘Good’ and 14 percent replied as ‘Satisfactory’. Table-6 shows the department wise analysis. It can be observed from the table that only in case of History, 01 student responded ‘Poor’ all the remaining students responded either Satisfactory or Good.

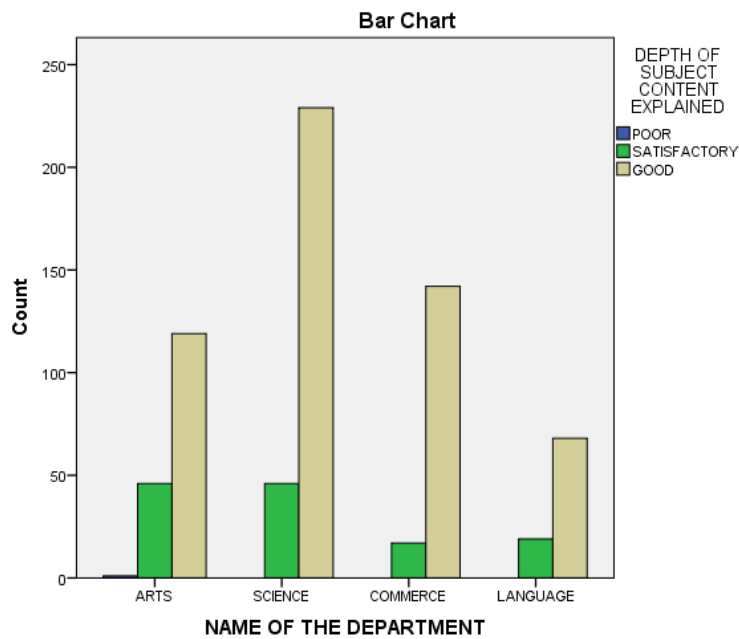
DEPARTMENT	Table -6 : CLARITY EXPRESSION WHILE TEACHING THE TOPIC/LESSON			Total
	POOR	SATISFACTORY	GOOD	
FOOD TECHNOLOGY	0	3	25	28
	0.00%	3.10%	4.20%	4.10%
GEOLOGY	0	2	13	15
	0.00%	2.10%	2.20%	2.20%
HINDI	0	5	26	31
	0.00%	5.20%	4.40%	4.50%
HISTORY	1	9	11	21
	100.00%	9.30%	1.90%	3.10%
HOME SCIENCE	0	1	23	24
	0.00%	1.00%	3.90%	3.50%
HORTICULTURE	0	3	19	22
	0.00%	3.10%	3.20%	3.20%
MATHEMATICS	0	1	33	34
	0.00%	1.00%	5.60%	4.90%
MICROBIOLOGY	0	1	9	10
	0.00%	1.00%	1.50%	1.50%
PHYSICS	0	3	25	28
	0.00%	3.10%	4.20%	4.10%
POLITICS	0	10	23	33
	0.00%	10.30%	3.90%	4.80%
SANSKRIT	0	2	15	17
	0.00%	2.10%	2.50%	2.50%

STATISTICS	0	2	21	23
	0.00%	2.10%	3.60%	3.30%
TELUGU	0	5	17	22
	0.00%	5.20%	2.90%	3.20%
ZOOLOGY	0	0	10	10
	0.00%	0.00%	1.70%	1.50%
SPECIAL ENGLISH	0	4	14	18
	0.00%	4.10%	2.40%	2.60%
BOTANY	0	4	26	30
	0.00%	4.10%	4.40%	4.40%
CHEMISTRY	0	4	28	32
	0.00%	4.10%	4.80%	4.70%
COMMERCE	0	8	108	116
	0.00%	8.20%	18.30%	16.90%
COMPUTER SCIENCE	0	7	44	51
	0.00%	7.20%	7.50%	7.40%
COMPUTER APPLICATIONS	0	5	32	37
	0.00%	5.20%	5.40%	5.40%
ECONOMICS	0	7	30	37
	0.00%	7.20%	5.10%	5.40%
ENGLISH	0	11	37	48
	0.00%	11.30%	6.30%	7.00%
	1	97	589	687
	100.00%	100.00%	100.00%	100.00%

With respect to the ‘Depth of subject content explained, the information in the table-7 reveals that more than 80 percent of the sample responded as ‘Good’ and 18.6 percent of the sample responded as ‘Satisfactory’.

TABLE-7: NAME OF THE DEPARTMENT * DEPTH OF SUBJECT CONTENT EXPLAINED

		DEPTH OF SUBJECT CONTENT EXPLAINED			Total
		POOR	SATISFACTORY	GOOD	
NAME OF THE DEPARTMENT	ARTS	1 0.1%	46 6.7%	119 17.3%	166 24.2%
	SCIENCE	0 0.0%	46 6.7%	229 33.3%	275 40.0%
	COMMERCE	0 0.0%	17 2.5%	142 20.7%	159 23.1%
	LANGUAGE	0 0.0%	19 2.8%	68 9.9%	87 12.7%
Total		1 0.1%	128 18.6%	558 81.2%	687 100.0%



All the students ranked as 'Good' in case of Geology, Horticulture, Mathematics, Sanskrit, Statistics and Zoology (Table-8)

DEPARTMENT	Table -8 : DEPTH OF SUBJECT CONTENT EXPLAINED			Total
	POOR	SATISFACTORY	GOOD	
FOOD TECHNOLOGY	0	6	22	28
	0.00%	4.70%	3.90%	4.10%
GEOLOGY	0	1	14	15
	0.00%	0.80%	2.50%	2.20%
HINDI	0	5	26	31
	0.00%	3.90%	4.70%	4.50%
HISTORY	0	11	10	21
	0.00%	8.60%	1.80%	3.10%
HOME SCIENCE	0	5	19	24
	0.00%	3.90%	3.40%	3.50%
HORTICULTURE	0	1	21	22
	0.00%	0.80%	3.80%	3.20%
MATHEMATICS	0	1	33	34
	0.00%	0.80%	5.90%	4.90%
MICROBIOLOGY	0	3	7	10
	0.00%	2.30%	1.30%	1.50%
PHYSICS	0	6	22	28
	0.00%	4.70%	3.90%	4.10%
POLITICS	1	10	22	33
	100.00%	7.80%	3.90%	4.80%
SANSKRIT	0	1	16	17
	0.00%	0.80%	2.90%	2.50%
STATISTICS	0	1	22	23
	0.00%	0.80%	3.90%	3.30%
TELUGU	0	8	14	22
	0.00%	6.20%	2.50%	3.20%

ZOOLOGY	0	1	9	10
	0.00%	0.80%	1.60%	1.50%
SPECIAL ENGLISH	0	6	12	18
	0.00%	4.70%	2.20%	2.60%
BOTANY	0	10	20	30
	0.00%	7.80%	3.60%	4.40%
CHEMISTRY	0	7	25	32
	0.00%	5.50%	4.50%	4.70%
COMMERCE	0	7	109	116
	0.00%	5.50%	19.50%	16.90%
COMPUTER SCIENCE	0	6	45	51
	0.00%	4.70%	8.10%	7.40%
COMPUTER APPLICATIONS	0	12	25	37
	0.00%	9.40%	4.50%	5.40%
ECONOMICS	0	10	27	37
	0.00%	7.80%	4.80%	5.40%
ENGLISH	0	10	38	48
	0.00%	7.80%	6.80%	7.00%
	1	128	558	687
	100.00%	100.00%	100.00%	100.00%

Usage of innovative methods in the subject taught by the faculty improves the quality of teaching. Hence an attempt is made in Table-9 to analyze the results for that question. It can be observed from the table that, more than three fourths of the sample responded as ‘Good’. However, there is an urgent need to improve the usage of such methods by more number of faculty.

TABLE-9: NAME OF THE DEPARTMENT * USAGE OF INNOVATIVE METHODS IN THE SUBJECT TAUGHT

		USAGE OF INNOVATIVE METHODS IN THE SUBJECT TAUGHT			Total
		POOR	SATISFACTORY	GOOD	
NAME OF THE DEPARTMENT	ARTS	1 0.1%	51 7.4%	114 16.6%	166 24.2%
	SCIENCE	0 0.0%	65 9.5%	210 30.6%	275 40.0%
	COMMERCE	1 0.1%	21 3.1%	137 19.9%	159 23.1%
	LANGUAGE	1 0.1%	26 3.8%	60 8.7%	87 12.7%
Total		3 0.4%	163 23.7%	521 75.8%	687 100.0%

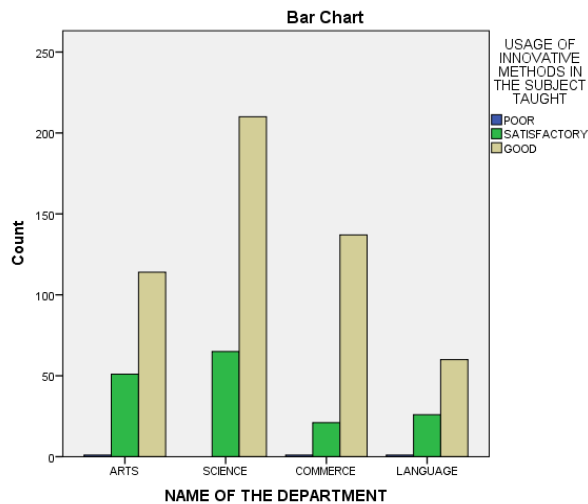


Table-10 shows that only 03 students each in History, English and Computer applications answered as 'Poor'.

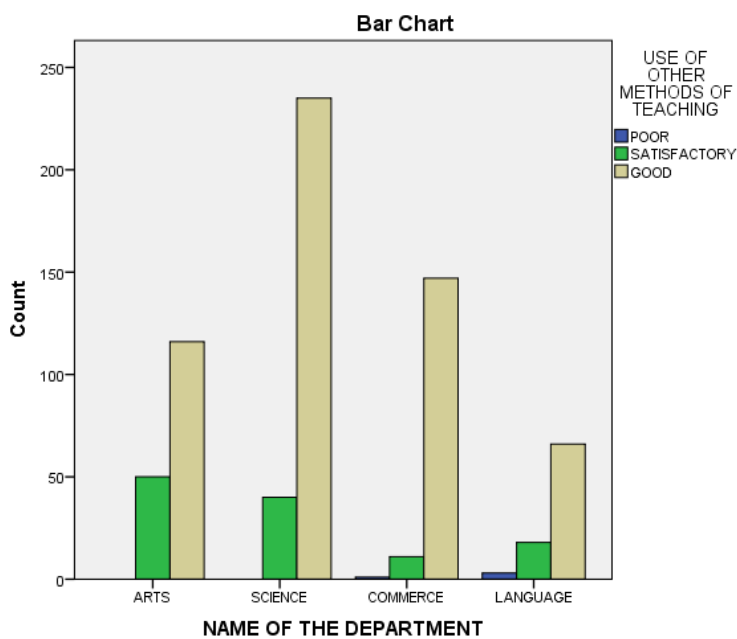
DEPARTMENT	Table -10 : USAGE OF INNOVATIVE METHODS IN THE SUBJECT TAUGHT			Total
	POOR	SATISFACTORY	GOOD	
FOOD TECHNOLOGY	0	7	21	28
	0.00%	4.30%	4.00%	4.10%
GEOLOGY	0	3	12	15
	0.00%	1.80%	2.30%	2.20%
HINDI	0	8	23	31
	0.00%	4.90%	4.40%	4.50%
HISTORY	1	10	10	21
	33.30%	6.10%	1.90%	3.10%
HOME SCIENCE	0	4	20	24
	0.00%	2.50%	3.80%	3.50%
HORTICULTURE	0	2	20	22
	0.00%	1.20%	3.80%	3.20%
MATHEMATICS	0	10	24	34
	0.00%	6.10%	4.60%	4.90%
MICROBIOLOGY	0	2	8	10
	0.00%	1.20%	1.50%	1.50%
PHYSICS	0	7	21	28
	0.00%	4.30%	4.00%	4.10%
POLITICS	0	14	19	33
	0.00%	8.60%	3.60%	4.80%
SANSKRIT	0	2	15	17
	0.00%	1.20%	2.90%	2.50%
STATISTICS	0	2	21	23
	0.00%	1.20%	4.00%	3.30%
TELUGU	0	8	14	22
	0.00%	4.90%	2.70%	3.20%

ZOOLOGY	0	1	9	10
	0.00%	0.60%	1.70%	1.50%
SPECIAL ENGLISH	0	2	16	18
	0.00%	1.20%	3.10%	2.60%
BOTANY	0	15	15	30
	0.00%	9.20%	2.90%	4.40%
CHEMISTRY	0	7	25	32
	0.00%	4.30%	4.80%	4.70%
COMMERCE	0	15	101	116
	0.00%	9.20%	19.40%	16.90%
COMPUTER SCIENCE	0	8	43	51
	0.00%	4.90%	8.30%	7.40%
COMPUTER APPLICATIONS	1	8	28	37
	33.30%	4.90%	5.40%	5.40%
ECONOMICS	0	12	25	37
	0.00%	7.40%	4.80%	5.40%
ENGLISH	1	16	31	48
	33.30%	9.80%	6.00%	7.00%
	3	163	521	687
	100.00%	100.00%	100.00%	100.00%

Table-11 is devoted to discuss the results of the question ‘use of other methods of teaching’. It proves that 82 per cent of the sample responded that their faculty are widely using the other teaching aids for effective transmission of the subject.

TABLE-11: NAME OF THE DEPARTMENT * USE OF OTHER METHODS OF TEACHING

		USE OF OTHER METHODS OF TEACHING			Total
		POOR	SATISFACTORY	GOOD	
NAME OF THE DEPARTMENT	ARTS	0 0.0%	50 7.3%	116 16.9%	166 24.2%
	SCIENCE	0 0.0%	40 5.8%	235 34.2%	275 40.0%
	COMMERCE	1 0.1%	11 1.6%	147 21.4%	159 23.1%
	LANGUAGE	3 0.4%	18 2.6%	66 9.6%	87 12.7%
Total		4 0.6%	119 17.3%	564 82.1%	687 100.0%



Data in Table-12 proves that, almost all the students in Geology, Microbiology, Sanskrit, Zoology replied as “Good”. Only 04 students as ‘Poor’ for this question.

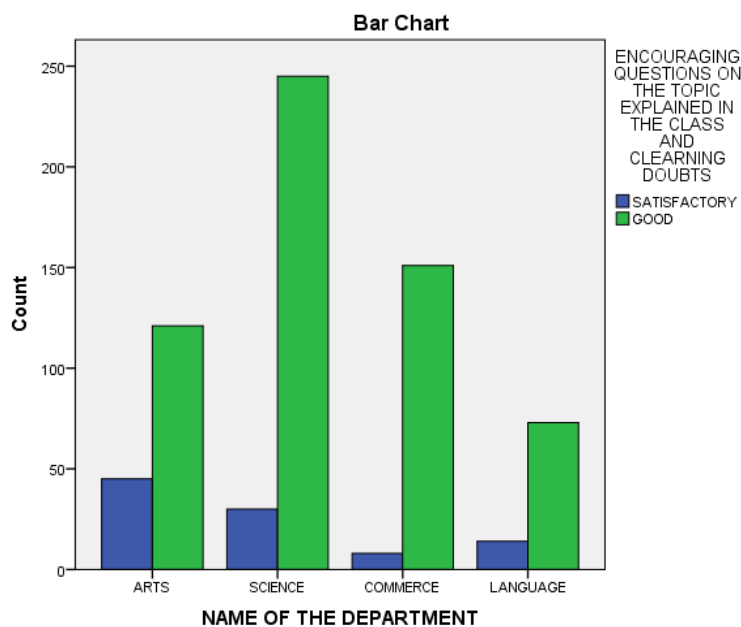
DEPARTMENT	Table -12 : USE OF OTHER METHODS OF TEACHING			Total
	POOR	SATISFACTORY	GOOD	
FOOD TECHNOLOGY	0	3	25	28
	0.00%	2.50%	4.40%	4.10%
GEOLOGY	0	1	14	15
	0.00%	0.80%	2.50%	2.20%
HINDI	0	8	23	31
	0.00%	6.70%	4.10%	4.50%
HISTORY	0	6	15	21
	0.00%	5.00%	2.70%	3.10%
HOME SCIENCE	0	3	21	24
	0.00%	2.50%	3.70%	3.50%
HORTICULTURE	0	5	17	22
	0.00%	4.20%	3.00%	3.20%
MATHEMATICS	0	9	25	34
	0.00%	7.60%	4.40%	4.90%
MICROBIOLOGY	0	1	9	10
	0.00%	0.80%	1.60%	1.50%
PHYSICS	0	3	25	28
	0.00%	2.50%	4.40%	4.10%
POLITICS	0	20	13	33
	0.00%	16.80%	2.30%	4.80%
SANSKRIT	0	1	16	17
	0.00%	0.80%	2.80%	2.50%
STATISTICS	0	4	19	23
	0.00%	3.40%	3.40%	3.30%

TELUGU	0	6	16	22
	0.00%	5.00%	2.80%	3.20%
ZOOLOGY	0	0	10	10
	0.00%	0.00%	1.80%	1.50%
SPECIAL ENGLISH	0	3	15	18
	0.00%	2.50%	2.70%	2.60%
BOTANY	0	5	25	30
	0.00%	4.20%	4.40%	4.40%
CHEMISTRY	0	4	28	32
	0.00%	3.40%	5.00%	4.70%
COMMERCE	0	7	109	116
	0.00%	5.90%	19.30%	16.90%
COMPUTER SCIENCE	0	8	43	51
	0.00%	6.70%	7.60%	7.40%
COMPUTER APPLICATIONS	1	4	32	37
	25.00%	3.40%	5.70%	5.40%
ECONOMICS	0	7	30	37
	0.00%	5.90%	5.30%	5.40%
ENGLISH	3	11	34	48
	75.00%	9.20%	6.00%	7.00%
	4	119	564	687
	100.00%	100.00%	100.00%	100.00%

Another indicator of quality teaching is ‘Encouraging questions on the topic explained in the class and clearing doubts’. The information in Table-13 shows that, no student replied ‘Poor’. That means all the faculty are very cooperative in the classroom.

TABLE-13 : NAME OF THE DEPARTMENT * ENCOURAGING QUESTIONS ON THE TOPIC EXPLAINED IN THE CLASS AND CLEARING DOUBTS

NAME OF THE DEPARTMENT	ENCOURAGING QUESTIONS ON THE TOPIC EXPLAINED IN THE CLASS AND CLEARING DOUBTS		Total
	SATISFACTORY	GOOD	
ARTS	45	121	166
	6.6%	17.6%	24.2%
SCIENCE	30	245	275
	4.4%	35.7%	40.0%
COMMERCE	8	151	159
	1.2%	22.0%	23.1%
LANGUAGE	14	73	87
	2.0%	10.6%	12.7%
Total	97	590	687
	14.1%	85.9%	100.0%



With respect to department wise analysis the information in Table-14 shows that all the students ranked their faculty either as Satisfactory or Good.

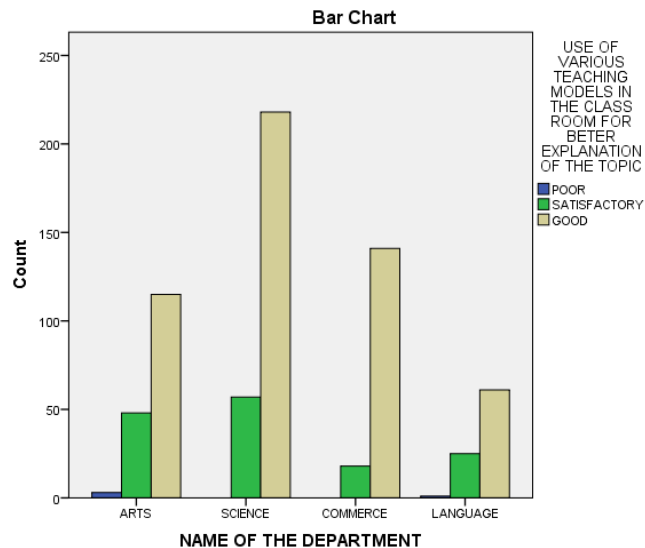
DEPARTMENT	Table -14 : ENCOURAGING QUESTIONS ON THE TOPIC EXPLAINED IN THE CLASS AND CLEARING DOUBTS		Total
	SATISFACTORY	GOOD	
FOOD TECHNOLOGY	2	26	28
	2.10%	4.40%	4.10%
GEOLOGY	3	12	15
	3.10%	2.00%	2.20%
HINDI	5	26	31
	5.20%	4.40%	4.50%
HISTORY	6	15	21
	6.20%	2.50%	3.10%
HOME SCIENCE	3	21	24
	3.10%	3.60%	3.50%
HORTICULTURE	1	21	22
	1.00%	3.60%	3.20%
MATHEMATICS	5	29	34
	5.20%	4.90%	4.90%
MICROBIOLOGY	0	10	10
	0.00%	1.70%	1.50%
PHYSICS	2	26	28
	2.10%	4.40%	4.10%
POLITICS	18	15	33
	18.60%	2.50%	4.80%

SANSKRIT	3	14	17
	3.10%	2.40%	2.50%
STATISTICS	1	22	23
	1.00%	3.70%	3.30%
TELUGU	3	19	22
	3.10%	3.20%	3.20%
ZOOLOGY	0	10	10
	0.00%	1.70%	1.50%
SPECIAL ENGLISH	3	15	18
	3.10%	2.50%	2.60%
BOTANY	6	24	30
	6.20%	4.10%	4.40%
CHEMISTRY	4	28	32
	4.10%	4.70%	4.70%
COMMERCE	4	112	116
	4.10%	19.00%	16.90%
COMPUTER SCIENCE	7	44	51
	7.20%	7.50%	7.40%
COMPUTER APPLICATIONS	5	32	37
	5.20%	5.40%	5.40%
ECONOMICS	8	29	37
	8.20%	4.90%	5.40%
ENGLISH	8	40	48
	8.20%	6.80%	7.00%
	97	590	687
	100.00%	100.00%	100.00%

Table-15 examines the ‘Use of various teaching models in the class room for better explanation of the topic’. It can be observed from the table that 78 per cent students rated ‘Good’ and 21.5 per cent rated ‘Satisfactory’ with respect to their faculty. However, usage of these models need to be improved for better explanation of the concept.

TABLE-15 : NAME OF THE DEPARTMENT * USE OF VARIOUS TEACHING MODELS IN THE CLASS ROOM FOR BETER EXPLANATION OF THE TOPIC

		USE OF VARIOUS TEACHING MODELS IN THE CLASS ROOM FOR BETER EXPLANATION OF THE TOPIC			Total
		POOR	SATISFACTORY	GOOD	
NAME OF THE DEPARTMENT	ARTS	3 0.4%	48 7.0%	115 16.7%	166 24.2%
	SCIENCE	0 0.0%	57 8.3%	218 31.7%	275 40.0%
	COMMERCE	0 0.0%	18 2.6%	141 20.5%	159 23.1%
	LANGUAGE	1 0.1%	25 3.6%	61 8.9%	87 12.7%
Total		4 0.6%	148 21.5%	535 77.9%	687 100.0%



The department wise picture in table-16 shows that 04 students from History, Politics and Economics responded 'Poor'.

DEPARTMENT	Table -16 : USE OF VARIOUS TEACHING MODELS IN THE CLASS ROOM FOR BETER EXPLANATION OF THE TOPIC			Total
	POOR	SATISFACTORY	GOOD	
FOOD TECHNOLOGY	0	6	22	28
	0.00%	4.10%	4.10%	4.10%
GEOLOGY	0	2	13	15
	0.00%	1.40%	2.40%	2.20%
HINDI	0	4	27	31
	0.00%	2.70%	5.00%	4.50%
HISTORY	1	10	10	21
	25.00%	6.80%	1.90%	3.10%
HOME SCIENCE	0	7	17	24
	0.00%	4.70%	3.20%	3.50%
HORTICULTURE	0	4	18	22
	0.00%	2.70%	3.40%	3.20%
MATHEMATICS	0	5	29	34
	0.00%	3.40%	5.40%	4.90%
MICROBIOLOGY	0	2	8	10
	0.00%	1.40%	1.50%	1.50%
PHYSICS	0	6	22	28
	0.00%	4.10%	4.10%	4.10%
POLITICS	2	13	18	33
	50.00%	8.80%	3.40%	4.80%
SANSKRIT	0	2	15	17
	0.00%	1.40%	2.80%	2.50%
STATISTICS	0	3	20	23
	0.00%	2.00%	3.70%	3.30%
TELUGU	0	8	14	22
	0.00%	5.40%	2.60%	3.20%

ZOOLOGY	0	1	9	10
	0.00%	0.70%	1.70%	1.50%
SPECIAL ENGLISH	0	5	13	18
	0.00%	3.40%	2.40%	2.60%
BOTANY	0	9	21	30
	0.00%	6.10%	3.90%	4.40%
CHEMISTRY	0	7	25	32
	0.00%	4.70%	4.70%	4.70%
COMMERCE	0	12	104	116
	0.00%	8.10%	19.40%	16.90%
COMPUTER SCIENCE	0	10	41	51
	0.00%	6.80%	7.70%	7.40%
COMPUTER APPLICATIONS	0	8	29	37
	0.00%	5.40%	5.40%	5.40%
ECONOMICS	0	9	28	37
	0.00%	6.10%	5.20%	5.40%
ENGLISH	1	15	32	48
	25.00%	10.10%	6.00%	7.00%
	4	148	535	687
	100.00%	100.00%	100.00%	100.00%

The information pertaining to ‘Quality of synopsis/notes on the topics supplied to the students’, in the table-17, proves that about 81 per cent of the sample replied that their faculty are providing material with good quality and the remaining 18.5 per cent responded as ‘Satisfactory’.

TABLE-17 : NAME OF THE DEPARTMENT * QUALITY OF SYNOPSIS/NOTES ON THE TOPICS SUPPLIED TO THE STUDENTS

NAME OF THE DEPARTMENT	QUALITY OF SYNOPSIS/NOTES ON THE TOPICS SUPPLIED TO THE STUDENTS			Total
	POOR	SATISFACTORY	GOOD	
ARTS	1	48	117	166
	0.1%	7.0%	17.0%	24.2%
SCIENCE	1	50	224	275
	0.1%	7.3%	32.6%	40.0%
COMMERCE	1	12	146	159
	0.1%	1.7%	21.3%	23.1%
LANGUAGE	1	17	69	87
	0.1%	2.5%	10.0%	12.7%
Total	4	127	556	687
	0.6%	18.5%	80.9%	100.0%

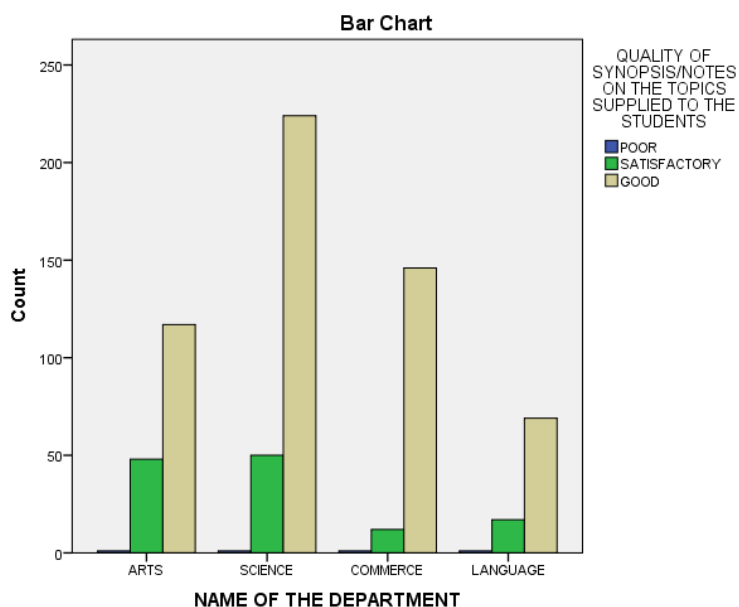


Table-18 shows that almost all the students of Geology, Microbiology, Sanskrit and Special English responded 'Good'.

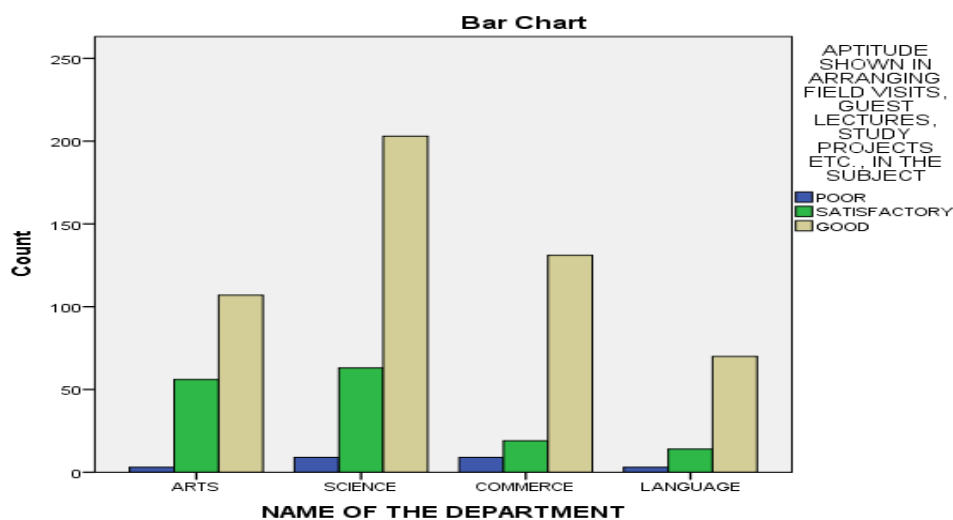
DEPARTMENT	Table -18 : QUALITY OF SYNOPSIS/NOTES ON THE TOPICS SUPPLIED TO THE STUDENTS			Total
	POOR	SATISFACTORY	GOOD	
FOOD TECHNOLOGY	0	5	23	28
	0.00%	3.90%	4.10%	4.10%
GEOLOGY	0	1	14	15
	0.00%	0.80%	2.50%	2.20%
HINDI	0	9	22	31
	0.00%	7.10%	4.00%	4.50%
HISTORY	1	9	11	21
	25.00%	7.10%	2.00%	3.10%
HOME SCIENCE	0	4	20	24
	0.00%	3.10%	3.60%	3.50%
HORTICULTURE	0	5	17	22
	0.00%	3.90%	3.10%	3.20%
MATHEMATICS	0	2	32	34
	0.00%	1.60%	5.80%	4.90%
MICROBIOLOGY	0	1	9	10
	0.00%	0.80%	1.60%	1.50%
PHYSICS	0	6	22	28
	0.00%	4.70%	4.00%	4.10%
POLITICS	0	13	20	33
	0.00%	10.20%	3.60%	4.80%
SANSKRIT	0	1	16	17
	0.00%	0.80%	2.90%	2.50%
STATISTICS	0	4	19	23
	0.00%	3.10%	3.40%	3.30%
TELUGU	1	5	16	22
	25.00%	3.90%	2.90%	3.20%
ZOOLOGY	0	2	8	10

	0.00%	1.60%	1.40%	1.50%
SPECIAL ENGLISH	0	1	17	18
	0.00%	0.80%	3.10%	2.60%
BOTANY	0	12	18	30
	0.00%	9.40%	3.20%	4.40%
CHEMISTRY	0	6	26	32
	0.00%	4.70%	4.70%	4.70%
COMMERCE	0	4	112	116
	0.00%	3.10%	20.10%	16.90%
COMPUTER SCIENCE	1	7	43	51
	25.00%	5.50%	7.70%	7.40%
COMPUTER APPLICATIONS	1	9	27	37
	25.00%	7.10%	4.90%	5.40%
ECONOMICS	0	10	27	37
	0.00%	7.90%	4.90%	5.40%
ENGLISH	0	11	37	48
	0.00%	8.70%	6.70%	7.00%
	4	127	556	687
	100.00%	100.00%	100.00%	100.00%

The aptitude shown in arranging field visits, Guest lectures, study projects etc in the subject enhances the learning quality of the students. The concerned result in Table-19, clears that 75 per cent of the faculty are arranging such activities with ‘Good’ grade and 22 per cent with ‘Satisfactory’ grade.

TABLE-19 : NAME OF THE DEPARTMENT * APTITUDE SHOWN IN ARRANGING FIELD VISITS, GUEST LECTURES, STUDY PROJECTS ETC., IN THE SUBJECT

		APTITUDE SHOWN IN ARRANGING FIELD VISITS, GUEST LECTURES, STUDY PROJECTS ETC., IN THE SUBJECT			Total
		POOR	SATISFACTORY	GOOD	
NAME OF THE DEPARTMENT	ARTS	3	56	107	166
		0.4%	8.2%	15.6%	24.2%
	SCIENCE	9	63	203	275
		1.3%	9.2%	29.5%	40.0%
	COMMERCE	9	19	131	159
		1.3%	2.8%	19.1%	23.1%
	LANGUAGE	3	14	70	87
		0.4%	2.0%	10.2%	12.7%
Total		24	152	511	687
		3.5%	22.1%	74.4%	100.0%



Surprisingly, Table-20 shows that 24 students replied 'Poor' covering 08 departments, viz., Home Science, Mathematics, Politics, Telugu, Commerce, Computer Science, Computer Applications and English.

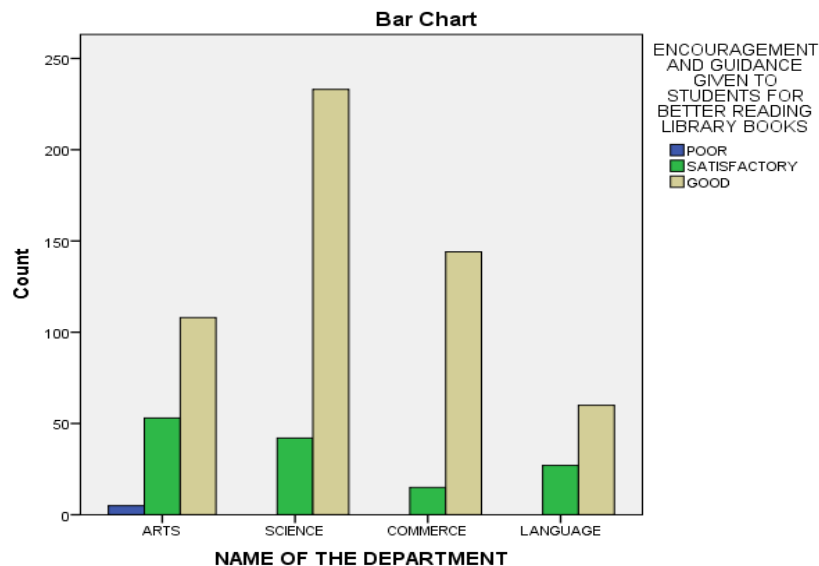
DEPARTMENT	Table -20 : APTITUDE SHOWN IN ARRANGING FIELD VISITS, GUEST LECTURES, STUDY PROJECTS ETC., IN THE SUBJECT			Total
	POOR	SATISFACTORY	GOOD	
FOOD TECHNOLOGY	0	8	20	28
	0.00%	5.30%	3.90%	4.10%
GEOLOGY	0	3	12	15
	0.00%	2.00%	2.30%	2.20%
HINDI	0	7	24	31
	0.00%	4.60%	4.70%	4.50%
HISTORY	0	5	16	21
	0.00%	3.30%	3.10%	3.10%
HOME SCIENCE	2	5	17	24
	8.30%	3.30%	3.30%	3.50%
HORTICULTURE	0	3	19	22
	0.00%	2.00%	3.70%	3.20%
MATHEMATICS	5	6	23	34
	20.80%	3.90%	4.50%	4.90%
MICROBIOLOGY	0	0	10	10
	0.00%	0.00%	2.00%	1.50%
PHYSICS	0	9	19	28
	0.00%	5.90%	3.70%	4.10%
POLITICS	1	22	10	33
	4.20%	14.50%	2.00%	4.80%
SANSKRIT	0	3	14	17
	0.00%	2.00%	2.70%	2.50%
STATISTICS	0	3	20	23
	0.00%	2.00%	3.90%	3.30%

TELUGU	2	0	20	22
	8.30%	0.00%	3.90%	3.20%
ZOOLOGY	0	3	7	10
	0.00%	2.00%	1.40%	1.50%
SPECIAL ENGLISH	0	5	13	18
	0.00%	3.30%	2.50%	2.60%
BOTANY	0	9	21	30
	0.00%	5.90%	4.10%	4.40%
CHEMISTRY	0	9	23	32
	0.00%	5.90%	4.50%	4.70%
COMMERCE	2	11	103	116
	8.30%	7.20%	20.20%	16.90%
COMPUTER SCIENCE	2	10	39	51
	8.30%	6.60%	7.60%	7.40%
COMPUTER APPLICATIONS	9	7	21	37
	37.50%	4.60%	4.10%	5.40%
ECONOMICS	0	13	24	37
	0.00%	8.60%	4.70%	5.40%
ENGLISH	1	11	36	48
	4.20%	7.20%	7.00%	7.00%
	24	152	511	687
	100.00%	100.00%	100.00%	100.00%

Table-21 presents distribution of sample by Stream and ‘Encouragement and Guidance given to students for better reading library books’. Table reveals that, 80 per cent of the students replied ‘Good’ and about 20 percent of the students replied ‘Satisfactory’. However, 05 Arts students replied as ‘Poor’. Only 05 students responded ‘Poor’ answer to this question from History, Politics and Economics departments.

TABLE-21: NAME OF THE DEPARTMENT * ENCOURAGEMENT AND GUIDANCE GIVEN TO STUDENTS FOR BETTER READING LIBRARY BOOKS

		ENCOURAGEMENT AND GUIDANCE GIVEN TO STUDENTS FOR BETTER READING LIBRARY BOOKS			Total
		POOR	SATISFACTORY	GOOD	
NAME OF THE DEPARTMENT	ARTS	5	53	108	166
		0.7%	7.7%	15.7%	24.2%
	SCIENCE	0	42	233	275
		0.0%	6.1%	33.9%	40.0%
	COMMERCE	0	15	144	159
		0.0%	2.2%	21.0%	23.1%
	LANGUAGE	0	27	60	87
		0.0%	3.9%	8.7%	12.7%
Total		5	137	545	687
		0.7%	19.9%	79.3%	100.0%



DEPARTMENT	Table -22 : ENCOURAGEMENT AND GUIDANCE GIVEN TO STUDENTS FOR BETTER READING LIBRARY BOOKS			Total
	POOR	SATISFACTORY	GOOD	
FOOD TECHNOLOGY	0	5	23	28
	0.00%	3.60%	4.20%	4.10%
GEOLOGY	0	1	14	15
	0.00%	0.70%	2.60%	2.20%
HINDI	0	7	24	31
	0.00%	5.10%	4.40%	4.50%
HISTORY	2	9	10	21
	40.00%	6.60%	1.80%	3.10%
HOME SCIENCE	0	1	23	24
	0.00%	0.70%	4.20%	3.50%
HORTICULTURE	0	4	18	22
	0.00%	2.90%	3.30%	3.20%
MATHEMATICS	0	8	26	34
	0.00%	5.80%	4.80%	4.90%
MICROBIOLOGY	0	0	10	10
	0.00%	0.00%	1.80%	1.50%
PHYSICS	0	5	23	28
	0.00%	3.60%	4.20%	4.10%
POLITICS	1	15	17	33
	20.00%	10.90%	3.10%	4.80%
SANSKRIT	0	1	16	17
	0.00%	0.70%	2.90%	2.50%
STATISTICS	0	4	19	23
	0.00%	2.90%	3.50%	3.30%
TELUGU	0	6	16	22
	0.00%	4.40%	2.90%	3.20%
ZOOLOGY	0	2	8	10
	0.00%	1.50%	1.50%	1.50%
SPECIAL ENGLISH	0	7	11	18
	0.00%	5.10%	2.00%	2.60%
BOTANY	0	6	24	30

	0.00%	4.40%	4.40%	4.40%
CHEMISTRY	0	5	27	32
	0.00%	3.60%	5.00%	4.70%
COMMERCE	0	9	107	116
	0.00%	6.60%	19.60%	16.90%
COMPUTER SCIENCE	0	6	45	51
	0.00%	4.40%	8.30%	7.40%
COMPUTER APPLICATIONS	0	9	28	37
	0.00%	6.60%	5.10%	5.40%
ECONOMICS	2	7	28	37
	40.00%	5.10%	5.10%	5.40%
ENGLISH	0	20	28	48
	0.00%	14.60%	5.10%	7.00%
	5	137	545	687
	100.00%	100.00%	100.00%	100.00%

The data on ‘Encouragement and Guidance given to students in giving class seminars’ is submitted through Table-23. It can be found from the table that, 85 percent of the sample very much satisfied and responded as ‘Good’. On the other hand, 02 Arts students were not happy with the encouragement and guidance and responded as ‘Poor’. All the remaining are responded ‘Satisfactory’.

TABLE-23: NAME OF THE DEPARTMENT * ENCOURAGEMENT AND GUIDANCE GIVEN TO STUDENTS IN GIVING CLASS SEMINARS

NAME OF THE DEPARTMENT	ENCOURAGEMENT AND GUIDANCE GIVEN TO STUDENTS IN GIVING CLASS SEMINARS			Total
	POOR	SATISFACTORY	GOOD	
ARTS	2	36	128	166
	0.3%	5.2%	18.6%	24.2%
SCIENCE	0	36	239	275
	0.0%	5.2%	34.8%	40.0%
COMMERCE	0	13	146	159
	0.0%	1.9%	21.3%	23.1%
LANGUAGE	0	18	69	87
	0.0%	2.6%	10.0%	12.7%
Total	2	103	582	687
	0.3%	15.0%	84.7%	100.0%

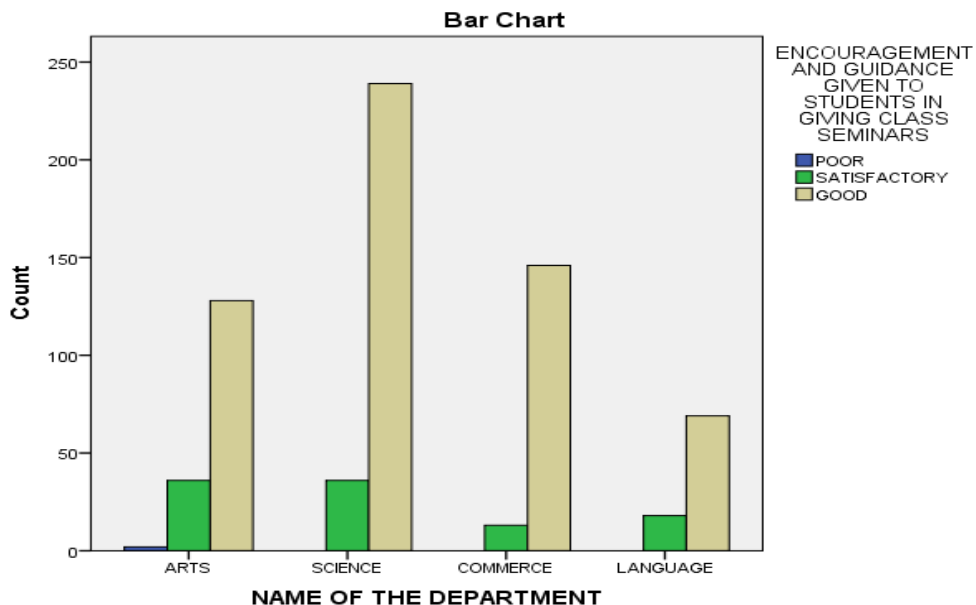


Table-24 proves that only 0-2 students responded 'Poor' where one thirds of Politics students replied as 'Satisfactory'

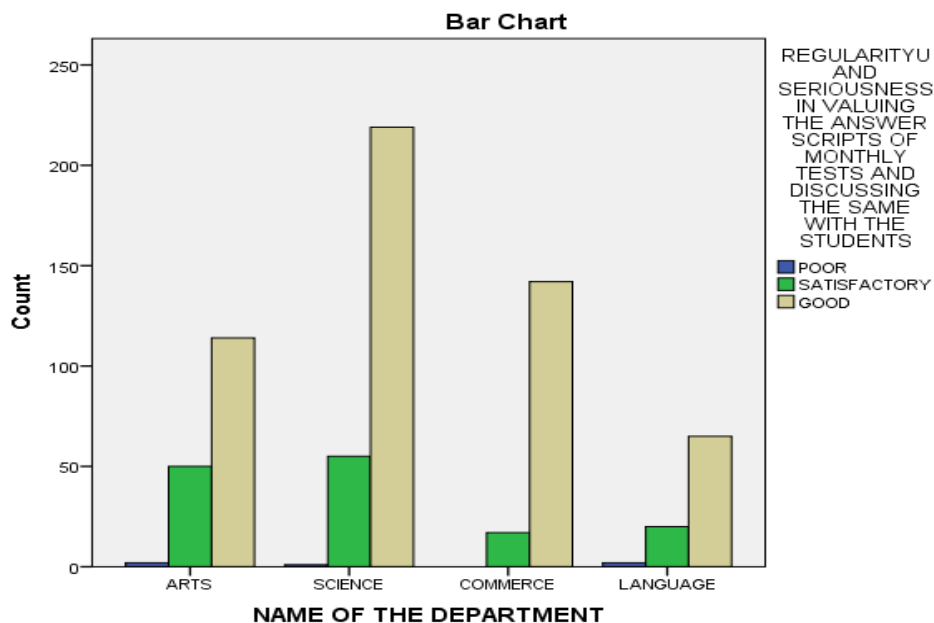
DEPARTMENT	Table -24 : ENCOURAGEMENT AND GUIDANCE GIVEN TO STUDENTS IN GIVING CLASS SEMINARS			Total
	POOR	SATISFACTORY	GOOD	
FOOD TECHNOLOGY	0	5	23	28
	0.00%	4.90%	4.00%	4.10%
GEOLOGY	0	2	13	15
	0.00%	1.90%	2.20%	2.20%
HINDI	0	5	26	31
	0.00%	4.90%	4.50%	4.50%
HISTORY	1	9	11	21
	50.00%	8.70%	1.90%	3.10%
HOME SCIENCE	0	2	22	24
	0.00%	1.90%	3.80%	3.50%
HORTICULTURE	0	1	21	22
	0.00%	1.00%	3.60%	3.20%
MATHEMATICS	0	4	30	34
	0.00%	3.90%	5.20%	4.90%
MICROBIOLOGY	0	0	10	10
	0.00%	0.00%	1.70%	1.50%
PHYSICS	0	5	23	28
	0.00%	4.90%	4.00%	4.10%
POLITICS	0	11	22	33
	0.00%	10.70%	3.80%	4.80%
SANSKRIT	0	2	15	17
	0.00%	1.90%	2.60%	2.50%
STATISTICS	0	1	22	23
	0.00%	1.00%	3.80%	3.30%
TELUGU	0	5	17	22
	0.00%	4.90%	2.90%	3.20%

ZOOLOGY	0	3	7	10
	0.00%	2.90%	1.20%	1.50%
SPECIAL ENGLISH	0	2	16	18
	0.00%	1.90%	2.70%	2.60%
BOTANY	0	5	25	30
	0.00%	4.90%	4.30%	4.40%
CHEMISTRY	0	5	27	32
	0.00%	4.90%	4.60%	4.70%
COMMERCE	0	9	107	116
	0.00%	8.70%	18.40%	16.90%
COMPUTER SCIENCE	0	6	45	51
	0.00%	5.80%	7.70%	7.40%
COMPUTER APPLICATIONS	0	4	33	37
	0.00%	3.90%	5.70%	5.40%
ECONOMICS	1	6	30	37
	50.00%	5.80%	5.20%	5.40%
ENGLISH	0	11	37	48
	0.00%	10.70%	6.40%	7.00%
	2	103	582	687
	100.00%	100.00%	100.00%	100.00%

Table-25 is devoted to present the results of ‘Regularity and seriousness in valuing the answer scripts of monthly tests and discussing the same with the students’. It reveals that 0.7 percent (5 in number) were responded as ‘Poor’ and about 79 percent responded as ‘Good’.

TABLE-25: NAME OF THE DEPARTMENT * REGULARITYU AND SERIOUSNESS IN VALUING THE ANSWER SCRIPTS OF MONTHLY TESTS AND DISCUSSING THE SAME WITH THE STUDENTS

NAME OF THE DEPARTMENT	REGULARITYU AND SERIOUSNESS IN VALUING THE ANSWER SCRIPTS OF MONTHLY TESTS AND DISCUSSING THE SAME WITH THE STUDENTS			Total
	POOR	SATISFACTORY	GOOD	
ARTS	2	50	114	166
	0.3%	7.3%	16.6%	24.2%
SCIENCE	1	55	219	275
	0.1%	8.0%	31.9%	40.0%
COMMERCE	0	17	142	159
	0.0%	2.5%	20.7%	23.1%
LANGUAGE	2	20	65	87
	0.3%	2.9%	9.5%	12.7%
Total	5	142	540	687
	0.7%	20.7%	78.6%	100.0%



In case of department wise picture, Table-26 reveals 05 students responded 'Poor'. With respect to Geology, Sanskrit, Zoology, almost all the students ranked 'Good'.

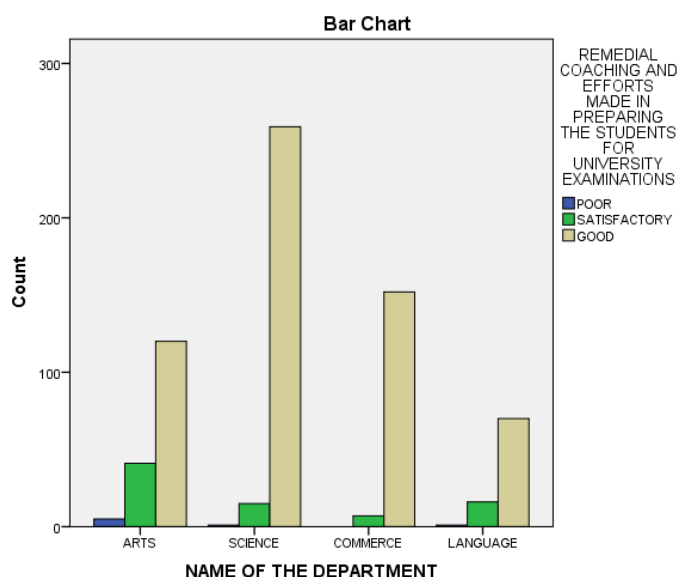
DEPARTMENT	Table -26 : REGULARITY AND SERIOUSNESS IN VALUING THE ANSWER SCRIPTS OF MONTHLY TESTS AND DISCUSSING THE SAME WITH THE STUDENTS			Total
	POOR	SATISFACTORY	GOOD	
FOOD TECHNOLOGY	0	7	21	28
	0.00%	4.90%	3.90%	4.10%
GEOLOGY	0	1	14	15
	0.00%	0.70%	2.60%	2.20%
HINDI	0	6	25	31
	0.00%	4.20%	4.60%	4.50%
HISTORY	0	7	14	21
	0.00%	4.90%	2.60%	3.10%
HOME SCIENCE	0	2	22	24
	0.00%	1.40%	4.10%	3.50%
HORTICULTURE	0	5	17	22
	0.00%	3.50%	3.10%	3.20%
MATHEMATICS	0	4	30	34
	0.00%	2.80%	5.60%	4.90%
MICROBIOLOGY	0	2	8	10
	0.00%	1.40%	1.50%	1.50%
PHYSICS	0	7	21	28
	0.00%	4.90%	3.90%	4.10%
POLITICS	2	12	19	33
	40.00%	8.50%	3.50%	4.80%
SANSKRIT	0	1	16	17
	0.00%	0.70%	3.00%	2.50%
STATISTICS	0	4	19	23
	0.00%	2.80%	3.50%	3.30%
TELUGU	1	7	14	22
	20.00%	4.90%	2.60%	3.20%

ZOOLOGY	0	1	9	10
	0.00%	0.70%	1.70%	1.50%
SPECIAL ENGLISH	0	3	15	18
	0.00%	2.10%	2.80%	2.60%
BOTANY	0	13	17	30
	0.00%	9.20%	3.10%	4.40%
CHEMISTRY	0	8	24	32
	0.00%	5.60%	4.40%	4.70%
COMMERCE	0	10	106	116
	0.00%	7.00%	19.60%	16.90%
COMPUTER SCIENCE	1	9	41	51
	20.00%	6.30%	7.60%	7.40%
COMPUTER APPLICATIONS	0	9	28	37
	0.00%	6.30%	5.20%	5.40%
ECONOMICS	0	12	25	37
	0.00%	8.50%	4.60%	5.40%
ENGLISH	1	12	35	48
	20.00%	8.50%	6.50%	7.00%
	5	142	540	687
	100.00%	100.00%	100.00%	100.00%

The information regarding Remedial Coaching and efforts made in preparing the students for university examinations is shown in Tables 27 and 28. Table-28 proves that, all the students from Geology, Horticulture, Microbiology, Sanskrit, Zoology, Botany and Chemistry.

TABLE-27: NAME OF THE DEPARTMENT * REMEDIAL COACHING AND EFFORTS MADE IN PREPARING THE STUDENTS FOR UNIVERSITY EXAMINATIONS

NAME OF THE DEPARTMENT	REMEDIAL COACHING AND EFFORTS MADE IN PREPARING THE STUDENTS FOR UNIVERSITY EXAMINATIONS			Total
	POOR	SATISFACTORY	GOOD	
ARTS	5	41	120	166
	0.7%	6.0%	17.5%	24.2%
SCIENCE	1	15	259	275
	0.1%	2.2%	37.7%	40.0%
COMMERCE	0	7	152	159
	0.0%	1.0%	22.1%	23.1%
LANGUAGE	1	16	70	87
	0.1%	2.3%	10.2%	12.7%
Total	7	79	601	687
	1.0%	11.5%	87.5%	100.0%



DEPARTMENT	Table -28 : REMEDIAL COACHING AND EFFORTS MADE IN PREPARING THE STUDENTS FOR UNIVERSITY EXAMINATIONS			Total
	POOR	SATISFACTORY	GOOD	
FOOD TECHNOLOGY	0	0	28	28
	0.00%	0.00%	4.70%	4.10%
GEOLOGY	0	1	14	15
	0.00%	1.30%	2.30%	2.20%
HINDI	0	6	25	31
	0.00%	7.60%	4.20%	4.50%
HISTORY	4	8	9	21
	57.10%	10.10%	1.50%	3.10%
HOME SCIENCE	0	6	18	24
	0.00%	7.60%	3.00%	3.50%
HORTICULTURE	0	1	21	22
	0.00%	1.30%	3.50%	3.20%
MATHEMATICS	0	4	30	34
	0.00%	5.10%	5.00%	4.90%
MICROBIOLOGY	0	1	9	10
	0.00%	1.30%	1.50%	1.50%
PHYSICS	0	0	28	28
	0.00%	0.00%	4.70%	4.10%
POLITICS	1	9	23	33
	14.30%	11.40%	3.80%	4.80%
SANSKRIT	0	1	16	17
	0.00%	1.30%	2.70%	2.50%
STATISTICS	0	1	22	23

	0.00%	1.30%	3.70%	3.30%
TELUGU	1	4	17	22
	14.30%	5.10%	2.80%	3.20%
ZOOLOGY	0	0	10	10
	0.00%	0.00%	1.70%	1.50%
SPECIAL ENGLISH	0	2	16	18
	0.00%	2.50%	2.70%	2.60%
BOTANY	0	0	30	30
	0.00%	0.00%	5.00%	4.40%
CHEMISTRY	0	0	32	32
	0.00%	0.00%	5.30%	4.70%
COMMERCE	0	6	110	116
	0.00%	7.60%	18.30%	16.90%
COMPUTER SCIENCE	1	5	45	51
	14.30%	6.30%	7.50%	7.40%
COMPUTER APPLICATIONS	0	4	33	37
	0.00%	5.10%	5.50%	5.40%
ECONOMICS	0	9	28	37
	0.00%	11.40%	4.70%	5.40%
ENGLISH	0	11	37	48
	0.00%	13.90%	6.20%	7.00%
	7	79	601	687
	100.00%	100.00%	100.00%	100.00%

On the other hand. 07 students ranked ‘Poor’.With respect to ‘Regularity and Punctuality to the class’ by the faculty, the data in Table-29 reveals that, all the students responded positively. Out of 687 sample, 612 sample responded ‘Good’ and the remaining 10 per cent responded ‘Satisfactory’.

TABLE-29: NAME OF THE DEPARTMENT * REGULARITY AND PUNCTUALITY TO THE CLASS

		REGULARITY AND PUNCTUALITY TO THE CLASS		Total
		SATISFACTORY	GOOD	
NAME OF THE DEPARTMENT	ARTS	34 4.9%	132 19.2%	166 24.2%
	SCIENCE	19 2.8%	256 37.3%	275 40.0%
	COMMERCE	3 0.4%	156 22.7%	159 23.1%
	LANGUAGE	19 2.8%	68 9.9%	87 12.7%
Total		75 10.9%	612 89.1%	687 100.0%

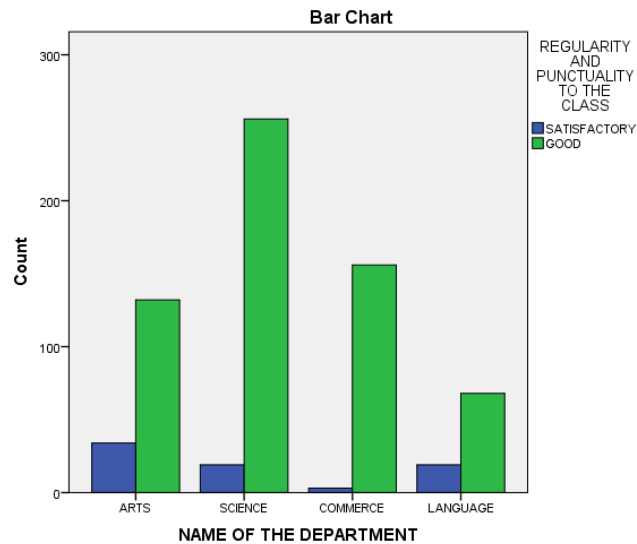


Table-30 shows that no student responded 'Poor' to this Question. On the other hand, all the students of Mathematics, Microbiology, Sanskrit, Statistics and Zoology responded 'Good'

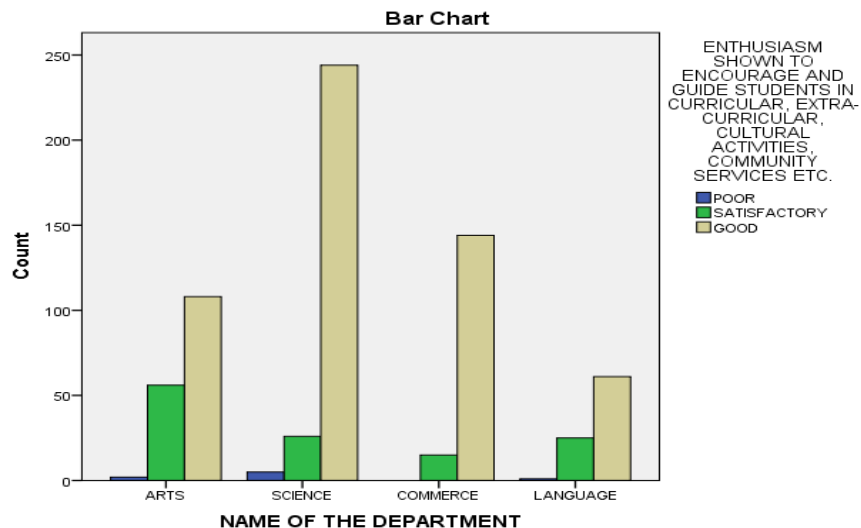
DEPARTMENT	Table - 30: REGULARITY AND PUNCTUALITY TO THE CLASS		Total
	SATISFACTORY	GOOD	
FOOD TECHNOLOGY	3	25	28
	4.00%	4.10%	4.10%
GEOLOGY	1	14	15
	1.30%	2.30%	2.20%
HINDI	6	25	31
	8.00%	4.10%	4.50%
HISTORY	4	17	21
	5.30%	2.80%	3.10%
HOME SCIENCE	0	24	24
	0.00%	3.90%	3.50%
HORTICULTURE	1	21	22
	1.30%	3.40%	3.20%
MATHEMATICS	0	34	34
	0.00%	5.60%	4.90%
MICROBIOLOGY	0	10	10
	0.00%	1.60%	1.50%
PHYSICS	3	25	28
	4.00%	4.10%	4.10%
POLITICS	9	24	33
	12.00%	3.90%	4.80%
SANSKRIT	1	16	17
	1.30%	2.60%	2.50%

STATISTICS	1	22	23
	1.30%	3.60%	3.30%
TELUGU	5	17	22
	6.70%	2.80%	3.20%
ZOOLOGY	0	10	10
	0.00%	1.60%	1.50%
SPECIAL ENGLISH	3	15	18
	4.00%	2.50%	2.60%
BOTANY	3	27	30
	4.00%	4.40%	4.40%
CHEMISTRY	4	28	32
	5.30%	4.60%	4.70%
COMMERCE	2	114	116
	2.70%	18.60%	16.90%
COMPUTER SCIENCE	4	47	51
	5.30%	7.70%	7.40%
COMPUTER APPLICATIONS	5	32	37
	6.70%	5.20%	5.40%
ECONOMICS	7	30	37
	9.30%	4.90%	5.40%
ENGLISH	13	35	48
	17.30%	5.70%	7.00%
	75	612	687
	100.00%	100.00%	100.00%

Table-31 presents the results on the question ‘Enthusiasm shown to encourage and guide students in curricular, extra-curricular, Cultural activities, Community services etc’. It can be observed from the table that 8 surveyed students felt ‘Poor and 18 percent felt ‘Satisfactory’ and 81 per cent felt ‘Good’ to this question. The Department wise distribution shows that, 08 students responded ‘Poor’ out of this 05 are from Mathematics and 02 from Computer applications.

TABLE-31: NAME OF THE DEPARTMENT * ENTHUSIASM SHOWN TO ENCOURAGE AND GUIDE STUDENTS IN CURRICULAR, EXTRA-CURRICULAR, CULTURAL ACTIVITIES, COMMUNITY SERVICES ETC.

		ENTHUSIASM SHOWN TO ENCOURAGE AND GUIDE STUDENTS IN CURRICULAR, EXTRA-CURRICULAR, CULTURAL ACTIVITIES, COMMUNITY SERVICES ETC.			Total
		POOR	SATISFACTORY	GOOD	
NAME OF THE DEPARTMENT	ARTS	2	56	108	166
		0.3%	8.2%	15.7%	24.2%
	SCIENCE	5	26	244	275
		0.7%	3.8%	35.5%	40.0%
	COMMERCE	0	15	144	159
	0.0%	2.2%	21.0%	23.1%	
	LANGUAGE	1	25	61	87
		0.1%	3.6%	8.9%	12.7%
Total		8	122	557	687
		1.2%	17.8%	81.1%	100.0%



DEPARTMENT	Table -32 : ENTHUSIASM SHOWN TO ENCOURAGE AND GUIDE STUDENTS IN CURRICULAR, EXTRA-CURRICULAR, CULTURAL ACTIVITIES, COMMUNITY SERVICES ETC.			Total
	POOR	SATISFACTORY	GOOD	
FOOD TECHNOLOGY	0	3	25	28
	0.00%	2.50%	4.50%	4.10%
GEOLOGY	0	0	15	15
	0.00%	0.00%	2.70%	2.20%
HINDI	0	7	24	31
	0.00%	5.70%	4.30%	4.50%
HISTORY	0	13	8	21
	0.00%	10.70%	1.40%	3.10%
HOME SCIENCE	0	1	23	24
	0.00%	0.80%	4.10%	3.50%
HORTICULTURE	0	3	19	22
	0.00%	2.50%	3.40%	3.20%
MATHEMATICS	5	3	26	34
	62.50%	2.50%	4.70%	4.90%
MICROBIOLOGY	0	1	9	10
	0.00%	0.80%	1.60%	1.50%
PHYSICS	0	3	25	28
	0.00%	2.50%	4.50%	4.10%
POLITICS	0	16	17	33
	0.00%	13.10%	3.10%	4.80%
SANSKRIT	0	0	17	17
	0.00%	0.00%	3.10%	2.50%
STATISTICS	0	3	20	23

	0.00%	2.50%	3.60%	3.30%
TELUGU	0	8	14	22
	0.00%	6.60%	2.50%	3.20%
ZOOLOGY	0	0	10	10
	0.00%	0.00%	1.80%	1.50%
SPECIAL ENGLISH	0	5	13	18
	0.00%	4.10%	2.30%	2.60%
BOTANY	0	6	24	30
	0.00%	4.90%	4.30%	4.40%
CHEMISTRY	0	4	28	32
	0.00%	3.30%	5.00%	4.70%
COMMERCE	0	8	108	116
	0.00%	6.60%	19.40%	16.90%
COMPUTER SCIENCE	0	4	47	51
	0.00%	3.30%	8.40%	7.40%
COMPUTER APPLICATIONS	2	9	26	37
	25.00%	7.40%	4.70%	5.40%
ECONOMICS	0	8	29	37
	0.00%	6.60%	5.20%	5.40%
ENGLISH	1	17	30	48
	12.50%	13.90%	5.40%	7.00%
	8	122	557	687
	100.00%	100.00%	100.00%	100.00%

An attempt is made in Table-33 to present the responses of the students on ‘Counselling and career guidance’ by their concerned faculty. It shows that 82 per cent of the faculty are counselling and guiding their students and hence ranked as ‘Good’. 02 from Science, 01 each from Arts and Commerce responded as ‘Poor’.

TABLE-33: NAME OF THE DEPARTMENT * COUNSELLING AND CAREER GUIDANCE

		COUNSELLING AND CAREER GUIDANCE			Total
		POOR	SATISFACTORY	GOOD	
NAME OF THE DEPARTMENT	ARTS	1	45	120	166
		0.1%	6.6%	17.5%	24.2%
	SCIENCE	2	45	228	275
		0.3%	6.6%	33.2%	40.0%
	COMMERCE	0	16	143	159
		0.0%	2.3%	20.8%	23.1%
	LANGUAGE	1	14	72	87
		0.1%	2.0%	10.5%	12.7%
Total		4	120	563	687
		0.6%	17.5%	82.0%	100.0%

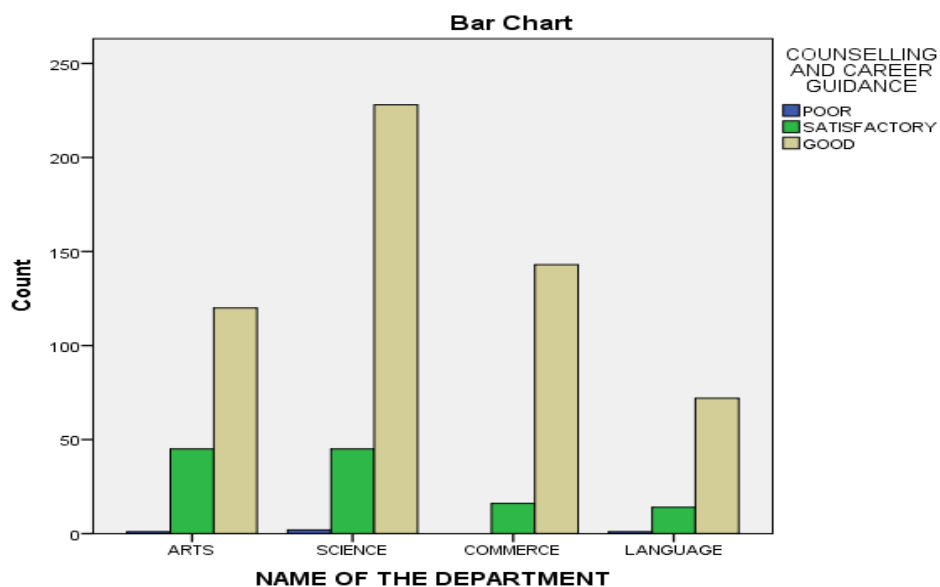


Table-34 shows that, all the students of Microbiology and Zoology ranked their faculty as ‘Good’.

DEPARTMENT	Table -34 : COUNSELLING AND CAREER GUIDANCE			Total
	POOR	SATISFACTORY	GOOD	
FOOD TECHNOLOGY	0	6	22	28
	0.00%	5.00%	3.90%	4.10%
GEOLOGY	0	2	13	15
	0.00%	1.70%	2.30%	2.20%
HINDI	0	6	25	31
	0.00%	5.00%	4.40%	4.50%
HISTORY	1	6	14	21
	25.00%	5.00%	2.50%	3.10%
HOME SCIENCE	1	3	20	24
	25.00%	2.50%	3.60%	3.50%
HORTICULTURE	0	2	20	22
	0.00%	1.70%	3.60%	3.20%
MATHEMATICS	0	2	32	34
	0.00%	1.70%	5.70%	4.90%
MICROBIOLOGY	0	0	10	10
	0.00%	0.00%	1.80%	1.50%
PHYSICS	0	6	22	28
	0.00%	5.00%	3.90%	4.10%
POLITICS	0	16	17	33
	0.00%	13.30%	3.00%	4.80%
SANSKRIT	0	2	15	17
	0.00%	1.70%	2.70%	2.50%
STATISTICS	0	2	21	23
	0.00%	1.70%	3.70%	3.30%
TELUGU	1	2	19	22
	25.00%	1.70%	3.40%	3.20%

ZOOLOGY	0	1	9	10
	0.00%	0.80%	1.60%	1.50%
SPECIAL ENGLISH	0	6	12	18
	0.00%	5.00%	2.10%	2.60%
BOTANY	0	10	20	30
	0.00%	8.30%	3.60%	4.40%
CHEMISTRY	0	8	24	32
	0.00%	6.70%	4.30%	4.70%
COMMERCE	0	11	105	116
	0.00%	9.20%	18.70%	16.90%
COMPUTER SCIENCE	1	6	44	51
	25.00%	5.00%	7.80%	7.40%
COMPUTER APPLICATIONS	0	7	30	37
	0.00%	5.80%	5.30%	5.40%
ECONOMICS	0	6	31	37
	0.00%	5.00%	5.50%	5.40%
ENGLISH	0	10	38	48
	0.00%	8.30%	6.70%	7.00%
	4	120	563	687
	100.00%	100.00%	100.00%	100.00%

Since the ‘Accessibility of the lecturer outside the class room for academic interaction’ is crucial for effective learning, an attempt is made in Table-35 to present that information. It shows that almost all the students were very much satisfied with the availability of their faculty. 83 per cent rated as ‘Good’ and 16.6 per cent rated as ‘Satisfactory’.

TABLE-35: NAME OF THE DEPARTMENT * ACCESSIBILITY OF THE LECTURER OUTSIDE THE CLASSROOM FOR ACADEMIC INTERACTION

NAME OF THE DEPARTMENT	ACCESSIBILITY OF THE LECTURER OUTSIDE THE CLASSROOM FOR ACADEMIC INTERACTION			Total
	POOR	SATISFACTORY	GOOD	
ARTS	0	39	127	166
	0.0%	5.7%	18.5%	24.2%
SCIENCE	0	52	223	275
	0.0%	7.6%	32.5%	40.0%
COMMERCE	1	6	152	159
	0.1%	0.9%	22.1%	23.1%
LANGUAGE	0	17	70	87
	0.0%	2.5%	10.2%	12.7%
Total	1	114	572	687
	0.1%	16.6%	83.3%	100.0%

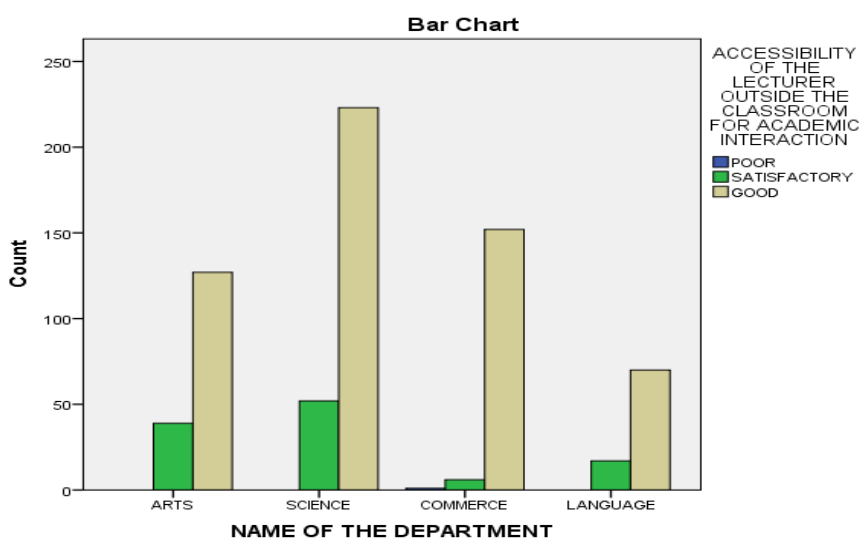


Table-36 shows that only one student of Commerce ranked their faculty as 'Poor' to this question. The students of Sanskrit, Zoology and Special English ranked their faculty as 'Good'

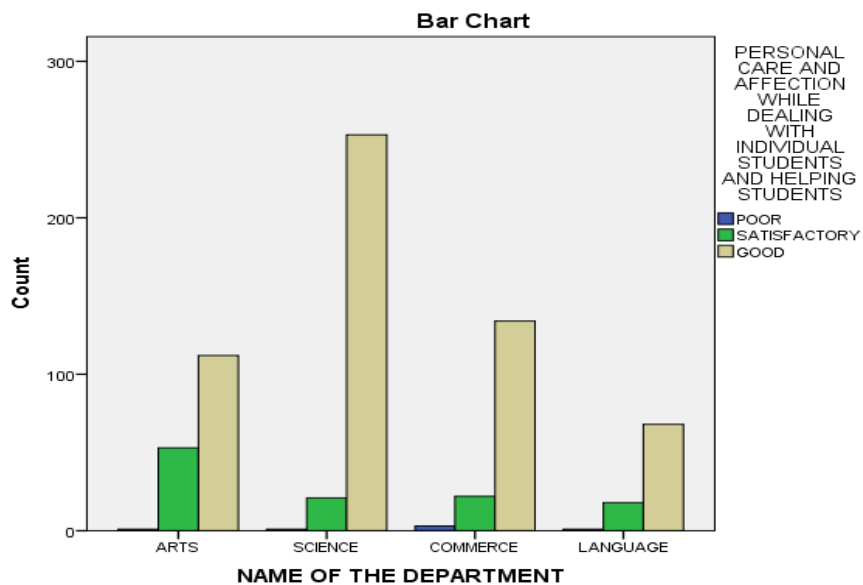
DEPARTMENT	Table -36 : ACCESSIBILITY OF THE LECTURER OUTSIDE THE CLASSROOM FOR ACADEMIC INTERACTION			Total
	POOR	SATISFACTORY	GOOD	
FOOD TECHNOLOGY	0	7	21	28
	0.00%	6.10%	3.70%	4.10%
GEOLOGY	0	1	14	15
	0.00%	0.90%	2.40%	2.20%
HINDI	0	7	24	31
	0.00%	6.10%	4.20%	4.50%
HISTORY	0	6	15	21
	0.00%	5.30%	2.60%	3.10%
HOME SCIENCE	0	4	20	24
	0.00%	3.50%	3.50%	3.50%
HORTICULTURE	0	2	20	22
	0.00%	1.80%	3.50%	3.20%
MATHEMATICS	0	2	32	34
	0.00%	1.80%	5.60%	4.90%
MICROBIOLOGY	0	2	8	10
	0.00%	1.80%	1.40%	1.50%
PHYSICS	0	7	21	28
	0.00%	6.10%	3.70%	4.10%
POLITICS	0	9	24	33
	0.00%	7.90%	4.20%	4.80%
SANSKRIT	0	1	16	17
	0.00%	0.90%	2.80%	2.50%
STATISTICS	0	2	21	23
	0.00%	1.80%	3.70%	3.30%
TELUGU	0	6	16	22

	0.00%	5.30%	2.80%	3.20%
ZOOLOGY	0	1	9	10
	0.00%	0.90%	1.60%	1.50%
SPECIAL ENGLISH	0	1	17	18
	0.00%	0.90%	3.00%	2.60%
BOTANY	0	7	23	30
	0.00%	6.10%	4.00%	4.40%
CHEMISTRY	0	12	20	32
	0.00%	10.50%	3.50%	4.70%
COMMERCE	1	5	110	116
	100.00%	4.40%	19.20%	16.90%
COMPUTER SCIENCE	0	8	43	51
	0.00%	7.00%	7.50%	7.40%
COMPUTER APPLICATIONS	0	4	33	37
	0.00%	3.50%	5.80%	5.40%
ECONOMICS	0	10	27	37
	0.00%	8.80%	4.70%	5.40%
ENGLISH	0	10	38	48
	0.00%	8.80%	6.60%	7.00%
	1	114	572	687
	100.00%	100.00%	100.00%	100.00%

Table-37 shows the consolidated information on the question ‘Personal care and affection while dealing with individual students and helping students’. It shows that 06 students were not satisfied and responded as ‘Poor’ to this question and all the remaining are very much satisfied with the cooperation and encouragement of their faculty.

TABLE-37 : NAME OF THE DEPARTMENT * PERSONAL CARE AND AFFECTION WHILE DEALING WITH INDIVIDUAL STUDENTS AND HELPING STUDENTS

NAME OF THE DEPARTMENT	PERSONAL CARE AND AFFECTION WHILE DEALING WITH INDIVIDUAL STUDENTS AND HELPING STUDENTS			Total
	POOR	SATISFACTORY	GOOD	
ARTS	1 0.1%	53 7.7%	112 16.3%	166 24.2%
SCIENCE	1 0.1%	21 3.1%	253 36.8%	275 40.0%
COMMERCE	3 0.4%	22 3.2%	134 19.5%	159 23.1%
LANGUAGE	1 0.1%	18 2.6%	68 9.9%	87 12.7%
Total	6 0.9%	114 16.6%	567 82.5%	687 100.0%



The information in Table-38 proves that only 06 students ranked as 'Poor' and all the remaining ranked as Satisfactory/Good.

DEPARTMENT	Table -38: PERSONAL CARE AND AFFECTION WHILE DEALING WITH INDIVIDUAL STUDENTS AND HELPING STUDENTS			Total
	POOR	SATISFACTORY	GOOD	
FOOD TECHNOLOGY	0	3	25	28
	0.00%	2.60%	4.40%	4.10%
GEOLOGY	0	0	15	15
	0.00%	0.00%	2.60%	2.20%
HINDI	0	10	21	31
	0.00%	8.80%	3.70%	4.50%
HISTORY	1	4	16	21
	16.70%	3.50%	2.80%	3.10%
HOME SCIENCE	0	1	23	24
	0.00%	0.90%	4.10%	3.50%
HORTICULTURE	0	2	20	22
	0.00%	1.80%	3.50%	3.20%
MATHEMATICS	0	4	30	34
	0.00%	3.50%	5.30%	4.90%
MICROBIOLOGY	0	0	10	10
	0.00%	0.00%	1.80%	1.50%
PHYSICS	0	3	25	28
	0.00%	2.60%	4.40%	4.10%
POLITICS	0	16	17	33
	0.00%	14.00%	3.00%	4.80%
SANSKRIT	0	0	17	17
	0.00%	0.00%	3.00%	2.50%
STATISTICS	0	2	21	23
	0.00%	1.80%	3.70%	3.30%
TELUGU	1	5	16	22
	16.70%	4.40%	2.80%	3.20%

ZOOLOGY	0	0	10	10
	0.00%	0.00%	1.80%	1.50%
SPECIAL ENGLISH	0	4	14	18
	0.00%	3.50%	2.50%	2.60%
BOTANY	0	5	25	30
	0.00%	4.40%	4.40%	4.40%
CHEMISTRY	0	4	28	32
	0.00%	3.50%	4.90%	4.70%
COMMERCE	2	12	102	116
	33.30%	10.50%	18.00%	16.90%
COMPUTER SCIENCE	1	2	48	51
	16.70%	1.80%	8.50%	7.40%
COMPUTER APPLICATIONS	1	12	24	37
	16.70%	10.50%	4.20%	5.40%
ECONOMICS	0	12	25	37
	0.00%	10.50%	4.40%	5.40%
ENGLISH	0	13	35	48
	0.00%	11.40%	6.20%	7.00%
	6	114	567	687
	100.00%	100.00%	100.00%	100.00%

The information on the ‘Overall opinion on the Lecturer, in Table-39, shows that 90 percent of the students ranked their faculty as ‘Good’ and 9 per cent ranked as ‘Satisfactory’. However, 03 from Arts and 01 from languages ranked their faculty as ‘Poor’.

TABLE-39 : NAME OF THE DEPARTMENT * OVERALL OPINION ON THE LECTURER

		OVERALL OPINION ON THE LECTURER			Total
		POOR	SATISFACTORY	GOOD	
NAME OF THE DEPARTMENT	ARTS	3	27	136	166
		0.4%	3.9%	19.8%	24.2%
	SCIENCE	0	21	254	275
		0.0%	3.1%	37.0%	40.0%
	COMMERCE	0	3	156	159
		0.0%	0.4%	22.7%	23.1%
	LANGUAGE	1	11	75	87
		0.1%	1.6%	10.9%	12.7%
Total		4	62	621	687
		0.6%	9.0%	90.4%	100.0%

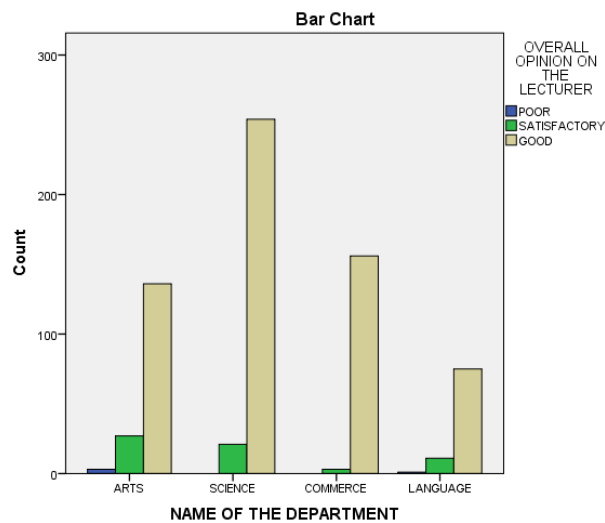


Table-40 shows that, all the students of Horticulture, Microbiology, Sanskrit, Telugu, Zoology, Special English, Commerce ranked their faculty as ‘Good’ only 04 from Economics, English, Politics and History ranked their faculty as ‘Poor’.

DEPARTMENT	Table -40: OVERALL OPINION ON THE LECTURER			Total
	POOR	SATISFACTORY	GOOD	
FOOD TECHNOLOGY	0	2	26	28
	0.00%	3.20%	4.20%	4.10%
GEOLOGY	0	2	13	15
	0.00%	3.20%	2.10%	2.20%
HINDI	0	5	26	31
	0.00%	8.10%	4.20%	4.50%
HISTORY	1	3	17	21
	25.00%	4.80%	2.70%	3.10%
HOME SCIENCE	0	1	23	24
	0.00%	1.60%	3.70%	3.50%
HORTICULTURE	0	2	20	22
	0.00%	3.20%	3.20%	3.20%
MATHEMATICS	0	2	32	34
	0.00%	3.20%	5.20%	4.90%
MICROBIOLOGY	0	0	10	10
	0.00%	0.00%	1.60%	1.50%
PHYSICS	0	2	26	28
	0.00%	3.20%	4.20%	4.10%
POLITICS	1	7	25	33
	25.00%	11.30%	4.00%	4.80%
SANSKRIT	0	1	16	17
	0.00%	1.60%	2.60%	2.50%
STATISTICS	0	2	21	23
	0.00%	3.20%	3.40%	3.30%
TELUGU	0	1	21	22
	0.00%	1.60%	3.40%	3.20%

ZOOLOGY	0	0	10	10
	0.00%	0.00%	1.60%	1.50%
SPECIAL ENGLISH	0	1	17	18
	0.00%	1.60%	2.70%	2.60%
BOTANY	0	2	28	30
	0.00%	3.20%	4.50%	4.40%
CHEMISTRY	0	4	28	32
	0.00%	6.50%	4.50%	4.70%
COMMERCE	0	1	115	116
	0.00%	1.60%	18.50%	16.90%
COMPUTER SCIENCE	0	4	47	51
	0.00%	6.50%	7.60%	7.40%
COMPUTER APPLICATIONS	0	5	32	37
	0.00%	8.10%	5.20%	5.40%
ECONOMICS	1	6	30	37
	25.00%	9.70%	4.80%	5.40%
ENGLISH	1	9	38	48
	25.00%	14.50%	6.10%	7.00%
	4	62	621	687
	100.00%	100.00%	100.00%	100.00%