

HINDU COLLEGE : : GUNTUR



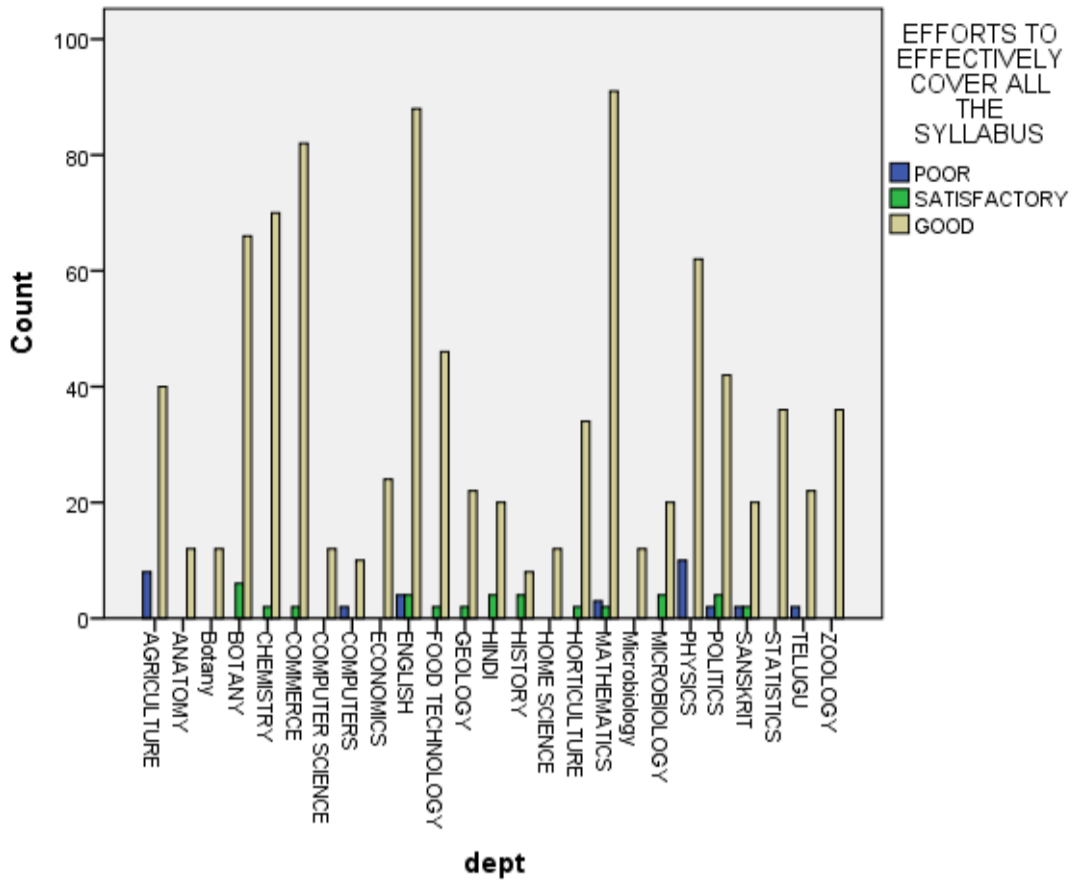
FEED BACK

2021-22

EFFORTS TO EFFECTIVELY COVER ALL THE SYLLABUS

	EFFORTS TO EFFECTIVELY COVER ALL THE SYLLABUS			Total
	POOR	SATISFACTORY	GOOD	
AGRICULTURE	8	0	40	48
	0.8%	0.0%	4.1%	4.9%
ANATOMY	0	0	12	12
	0.0%	0.0%	1.2%	1.2%
Botany	0	0	12	12
	0.0%	0.0%	1.2%	1.2%
BOTANY	0	6	66	72
	0.0%	0.6%	6.8%	7.4%
CHEMISTRY	0	2	70	72
	0.0%	0.2%	7.2%	7.4%
COMMERCE	0	2	82	84
	0.0%	0.2%	8.4%	8.6%
COMPUTER SCIENCE	0	0	12	12
	0.0%	0.0%	1.2%	1.2%
COMPUTERS	2	0	10	12
	0.2%	0.0%	1.0%	1.2%
ECONOMICS	0	0	24	24
	0.0%	0.0%	2.5%	2.5%
ENGLISH	4	4	88	96
	0.4%	0.4%	9.1%	9.9%
FOOD TECHNOLOGY	0	2	46	48
	0.0%	0.2%	4.7%	4.9%
GEOLOGY	0	2	22	24
	0.0%	0.2%	2.3%	2.5%
HINDI	0	4	20	24
	0.0%	0.4%	2.1%	2.5%
HISTORY	0	4	8	12
	0.0%	0.4%	0.8%	1.2%
HOME SCIENCE	0	0	12	12
	0.0%	0.0%	1.2%	1.2%
HORTICULTURE	0	2	34	36
	0.0%	0.2%	3.5%	3.7%
MATHEMATICS	3	2	91	96
	0.3%	0.2%	9.4%	9.9%
Microbiology	0	0	12	12
	0.0%	0.0%	1.2%	1.2%
MICROBIOLOGY	0	4	20	24
	0.0%	0.4%	2.1%	2.5%
PHYSICS	10	0	62	72
	1.0%	0.0%	6.4%	7.4%
POLITICS	2	4	42	48
	0.2%	0.4%	4.3%	4.9%
SANSKRIT	2	2	20	24
	0.2%	0.2%	2.1%	2.5%
STATISTICS	0	0	36	36
	0.0%	0.0%	3.7%	3.7%
TELUGU	2	0	22	24
	0.2%	0.0%	2.3%	2.5%
ZOOLOGY	0	0	36	36
	0.0%	0.0%	3.7%	3.7%
Total	33	40	899	972
	3.4%	4.1%	92.5%	100.0%

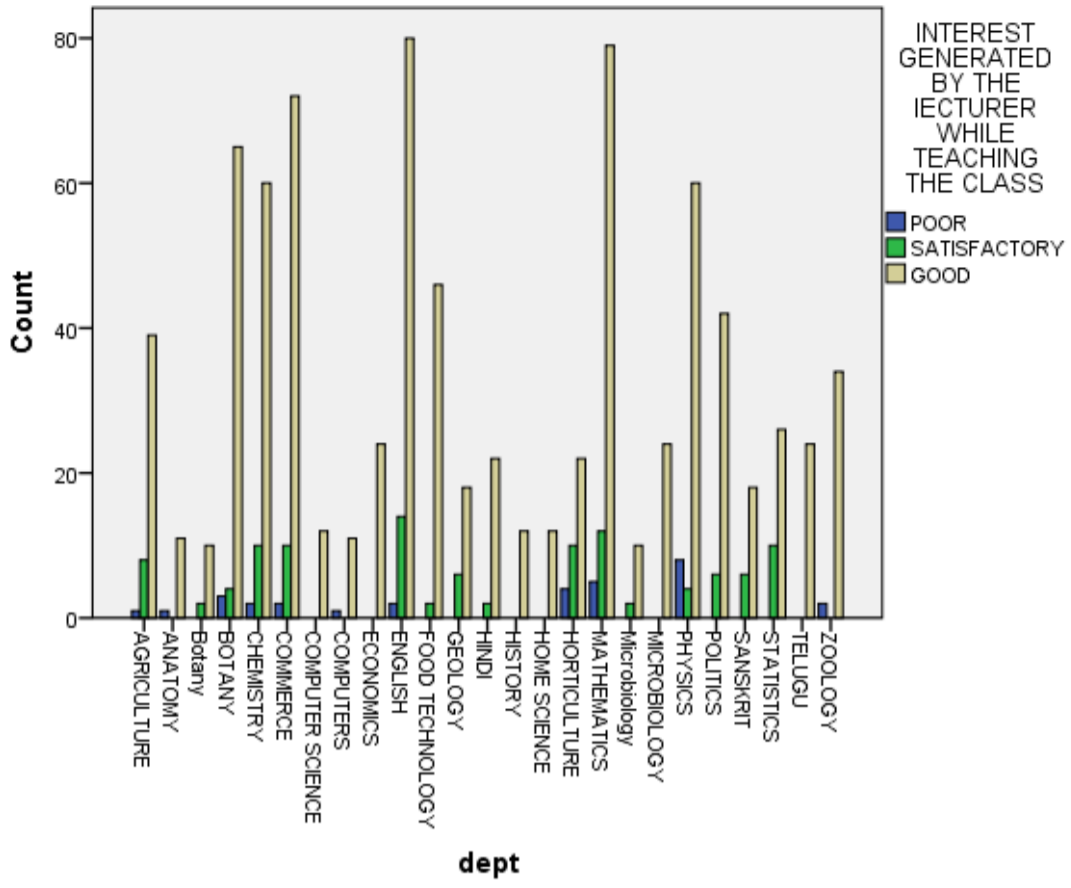
Bar Chart



INTEREST GENERATED BY THE LECTURER WHILE TEACHING THE CLASS

	INTEREST GENERATED BY THE LECTURER WHILE TEACHING THE CLASS			Total
	POOR	SATISFACTORY	GOOD	
AGRICULTURE	1	8	39	48
	0.1%	0.8%	4.0%	4.9%
ANATOMY	1	0	11	12
	0.1%	0.0%	1.1%	1.2%
Botany	0	2	10	12
	0.0%	0.2%	1.0%	1.2%
BOTANY	3	4	65	72
	0.3%	0.4%	6.7%	7.4%
CHEMISTRY	2	10	60	72
	0.2%	1.0%	6.2%	7.4%
COMMERCE	2	10	72	84
	0.2%	1.0%	7.4%	8.6%
COMPUTER SCIENCE	0	0	12	12
	0.0%	0.0%	1.2%	1.2%
COMPUTERS	1	0	11	12
	0.1%	0.0%	1.1%	1.2%
ECONOMICS	0	0	24	24
	0.0%	0.0%	2.5%	2.5%
ENGLISH	2	14	80	96
	0.2%	1.4%	8.2%	9.9%
FOOD TECHNOLOGY	0	2	46	48
	0.0%	0.2%	4.7%	4.9%
GEOLOGY	0	6	18	24
	0.0%	0.6%	1.9%	2.5%
HINDI	0	2	22	24
	0.0%	0.2%	2.3%	2.5%
HISTORY	0	0	12	12
	0.0%	0.0%	1.2%	1.2%
HOME SCIENCE	0	0	12	12
	0.0%	0.0%	1.2%	1.2%
HORTICULTURE	4	10	22	36
	0.4%	1.0%	2.3%	3.7%
MATHEMATICS	5	12	79	96
	0.5%	1.2%	8.1%	9.9%
Microbiology	0	2	10	12
	0.0%	0.2%	1.0%	1.2%
MICROBIOLOGY	0	0	24	24
	0.0%	0.0%	2.5%	2.5%
PHYSICS	8	4	60	72
	0.8%	0.4%	6.2%	7.4%
POLITICS	0	6	42	48
	0.0%	0.6%	4.3%	4.9%
SANSKRIT	0	6	18	24
	0.0%	0.6%	1.9%	2.5%
STATISTICS	0	10	26	36
	0.0%	1.0%	2.7%	3.7%
TELUGU	0	0	24	24
	0.0%	0.0%	2.5%	2.5%
ZOOLOGY	2	0	34	36
	0.2%	0.0%	3.5%	3.7%
Total	31	108	833	972
	3.2%	11.1%	85.7%	100.0%

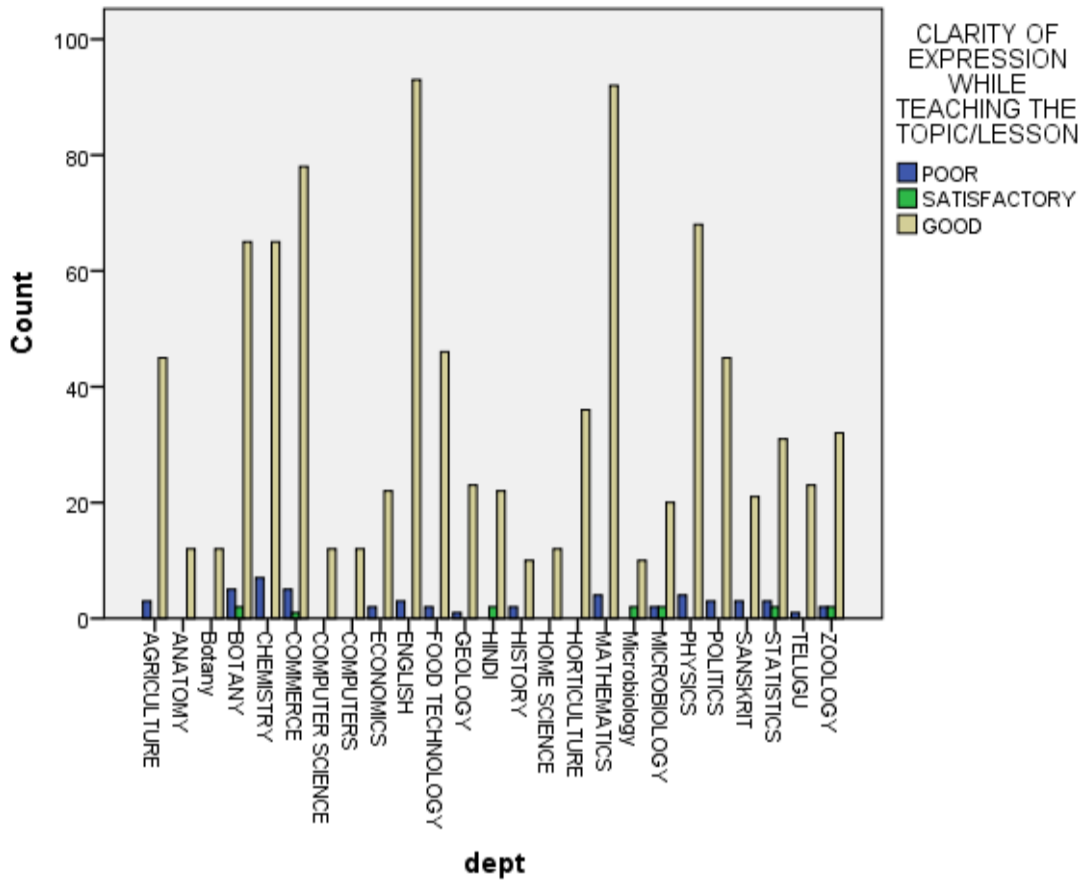
Bar Chart



CLARITY OF EXPRESSION WHILE TEACHING THE
TOPIC/LESSON

	CLARITY OF EXPRESSION WHILE TEACHING THE TOPIC/LESSON			Total
	POOR	SATISFACTORY	GOOD	
AGRICULTURE	3	0	45	48
	0.30%	0.00%	4.60%	4.90%
ANATOMY	0	0	12	12
	0.00%	0.00%	1.20%	1.20%
Botany	0	0	12	12
	0.00%	0.00%	1.20%	1.20%
BOTANY	5	2	65	72
	0.50%	0.20%	6.70%	7.40%
CHEMISTRY	7	0	65	72
	0.70%	0.00%	6.70%	7.40%
COMMERCE	5	1	78	84
	0.50%	0.10%	8.00%	8.60%
COMPUTER SCIENCE	0	0	12	12
	0.00%	0.00%	1.20%	1.20%
COMPUTERS	0	0	12	12
	0.00%	0.00%	1.20%	1.20%
ECONOMICS	2	0	22	24
	0.20%	0.00%	2.30%	2.50%
ENGLISH	3	0	93	96
	0.30%	0.00%	9.60%	9.90%
FOOD TECHNOLOGY	2	0	46	48
	0.20%	0.00%	4.70%	4.90%
GEOLOGY	1	0	23	24
	0.10%	0.00%	2.40%	2.50%
HINDI	0	2	22	24
	0.00%	0.20%	2.30%	2.50%
HISTORY	2	0	10	12
	0.20%	0.00%	1.00%	1.20%
HOME SCIENCE	0	0	12	12
	0.00%	0.00%	1.20%	1.20%
HORTICULTURE	0	0	36	36
	0.00%	0.00%	3.70%	3.70%
MATHEMATICS	4	0	92	96
	0.40%	0.00%	9.50%	9.90%
Microbiology	0	2	10	12
	0.00%	0.20%	1.00%	1.20%
MICROBIOLOGY	2	2	20	24
	0.20%	0.20%	2.10%	2.50%
PHYSICS	4	0	68	72
	0.40%	0.00%	7.00%	7.40%
POLITICS	3	0	45	48
	0.30%	0.00%	4.60%	4.90%
SANSKRIT	3	0	21	24
	0.30%	0.00%	2.20%	2.50%
STATISTICS	3	2	31	36
	0.30%	0.20%	3.20%	3.70%
TELUGU	1	0	23	24
	0.10%	0.00%	2.40%	2.50%
ZOOLOGY	2	2	32	36
	0.20%	0.20%	3.30%	3.70%
total	52	13	907	972
	5.30%	1.30%	93.30%	100.00%

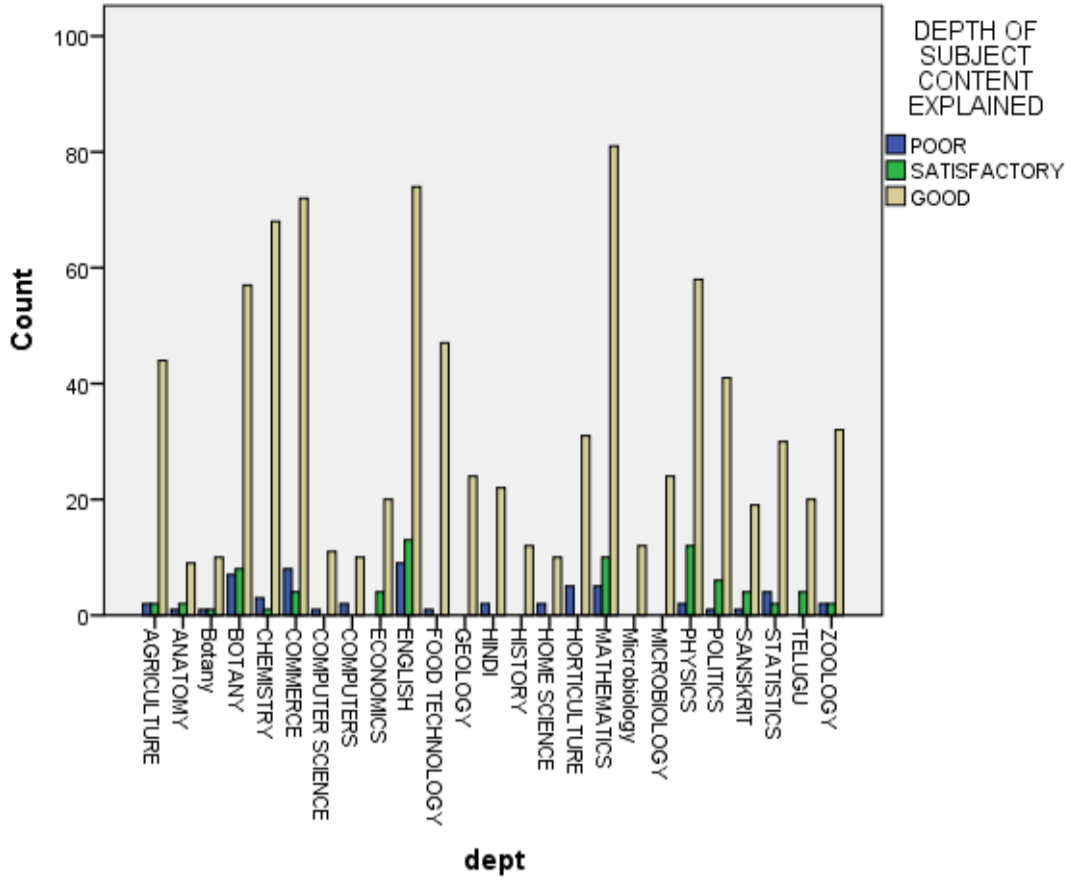
Bar Chart



DEPTH OF SUBJECT CONTENT EXPLAINED

	DEPTH OF SUBJECT CONTENT EXPLAINED			Total
	POOR	SATISFACTORY	GOOD	
AGRICULTURE	2	2	44	48
	0.2%	0.2%	4.5%	4.9%
ANATOMY	1	2	9	12
	0.1%	0.2%	0.9%	1.2%
Botany	1	1	10	12
	0.1%	0.1%	1.0%	1.2%
BOTANY	7	8	57	72
	0.7%	0.8%	5.9%	7.4%
CHEMISTRY	3	1	68	72
	0.3%	0.1%	7.0%	7.4%
COMMERCE	8	4	72	84
	0.8%	0.4%	7.4%	8.6%
COMPUTER SCIENCE	1	0	11	12
	0.1%	0.0%	1.1%	1.2%
COMPUTERS	2	0	10	12
	0.2%	0.0%	1.0%	1.2%
ECONOMICS	0	4	20	24
	0.0%	0.4%	2.1%	2.5%
ENGLISH	9	13	74	96
	0.9%	1.3%	7.6%	9.9%
FOOD TECHNOLOGY	1	0	47	48
	0.1%	0.0%	4.8%	4.9%
GEOLOGY	0	0	24	24
	0.0%	0.0%	2.5%	2.5%
HINDI	2	0	22	24
	0.2%	0.0%	2.3%	2.5%
HISTORY	0	0	12	12
	0.0%	0.0%	1.2%	1.2%
HOME SCIENCE	2	0	10	12
	0.2%	0.0%	1.0%	1.2%
HORTICULTURE	5	0	31	36
	0.5%	0.0%	3.2%	3.7%
MATHEMATICS	5	10	81	96
	0.5%	1.0%	8.3%	9.9%
Microbiology	0	0	12	12
	0.0%	0.0%	1.2%	1.2%
MICROBIOLOGY	0	0	24	24
	0.0%	0.0%	2.5%	2.5%
PHYSICS	2	12	58	72
	0.2%	1.2%	6.0%	7.4%
POLITICS	1	6	41	48
	0.1%	0.6%	4.2%	4.9%
SANSKRIT	1	4	19	24
	0.1%	0.4%	2.0%	2.5%
STATISTICS	4	2	30	36
	0.4%	0.2%	3.1%	3.7%
TELUGU	0	4	20	24
	0.0%	0.4%	2.1%	2.5%
ZOOLOGY	2	2	32	36
	0.2%	0.2%	3.3%	3.7%
	59	75	838	972
Total	6.1%	7.7%	86.2%	100.0%

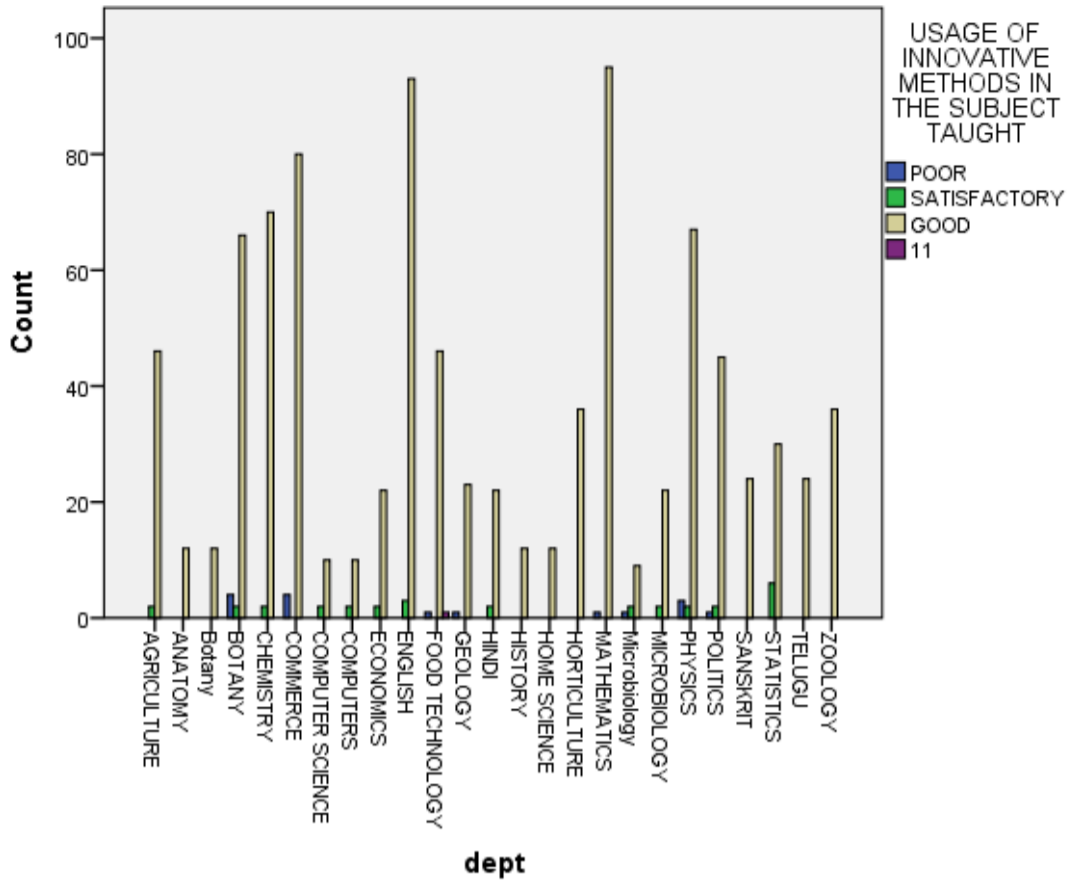
Bar Chart



**USAGE OF INNOVATIVE METHODS IN THE SUBJECT
TAUGHT**

	USAGE OF INNOVATIVE METHODS IN THE SUBJECT TAUGHT				Total
	POOR	SATISFACTORY	GOOD	11	
AGRICULTURE	0	2	46	0	48
	0.0%	0.2%	4.7%	0.0%	4.9%
ANATOMY	0	0	12	0	12
	0.0%	0.0%	1.2%	0.0%	1.2%
Botany	0	0	12	0	12
	0.0%	0.0%	1.2%	0.0%	1.2%
BOTANY	4	2	66	0	72
	0.4%	0.2%	6.8%	0.0%	7.4%
CHEMISTRY	0	2	70	0	72
	0.0%	0.2%	7.2%	0.0%	7.4%
COMMERCE	4	0	80	0	84
	0.4%	0.0%	8.2%	0.0%	8.6%
COMPUTER SCIENCE	0	2	10	0	12
	0.0%	0.2%	1.0%	0.0%	1.2%
COMPUTERS	0	2	10	0	12
	0.0%	0.2%	1.0%	0.0%	1.2%
ECONOMICS	0	2	22	0	24
	0.0%	0.2%	2.3%	0.0%	2.5%
ENGLISH	0	3	93	0	96
	0.0%	0.3%	9.6%	0.0%	9.9%
FOOD TECHNOLOGY	1	0	46	1	48
	0.1%	0.0%	4.7%	0.1%	4.9%
GEOLOGY	1	0	23	0	24
	0.1%	0.0%	2.4%	0.0%	2.5%
HINDI	0	2	22	0	24
	0.0%	0.2%	2.3%	0.0%	2.5%
HISTORY	0	0	12	0	12
	0.0%	0.0%	1.2%	0.0%	1.2%
HOME SCIENCE	0	0	12	0	12
	0.0%	0.0%	1.2%	0.0%	1.2%
HORTICULTURE	0	0	36	0	36
	0.0%	0.0%	3.7%	0.0%	3.7%
MATHEMATICS	1	0	95	0	96
	0.1%	0.0%	9.8%	0.0%	9.9%
Microbiology	1	2	9	0	12
	0.1%	0.2%	0.9%	0.0%	1.2%
MICROBIOLOGY	0	2	22	0	24
	0.0%	0.2%	2.3%	0.0%	2.5%
PHYSICS	3	2	67	0	72
	0.3%	0.2%	6.9%	0.0%	7.4%
POLITICS	1	2	45	0	48
	0.1%	0.2%	4.6%	0.0%	4.9%
SANSKRIT	0	0	24	0	24
	0.0%	0.0%	2.5%	0.0%	2.5%
STATISTICS	0	6	30	0	36
	0.0%	0.6%	3.1%	0.0%	3.7%
TELUGU	0	0	24	0	24
	0.0%	0.0%	2.5%	0.0%	2.5%
ZOOLOGY	0	0	36	0	36
	0.0%	0.0%	3.7%	0.0%	3.7%
Total	16	31	924	1	972
	1.6%	3.2%	95.1%	0.1%	100.0%

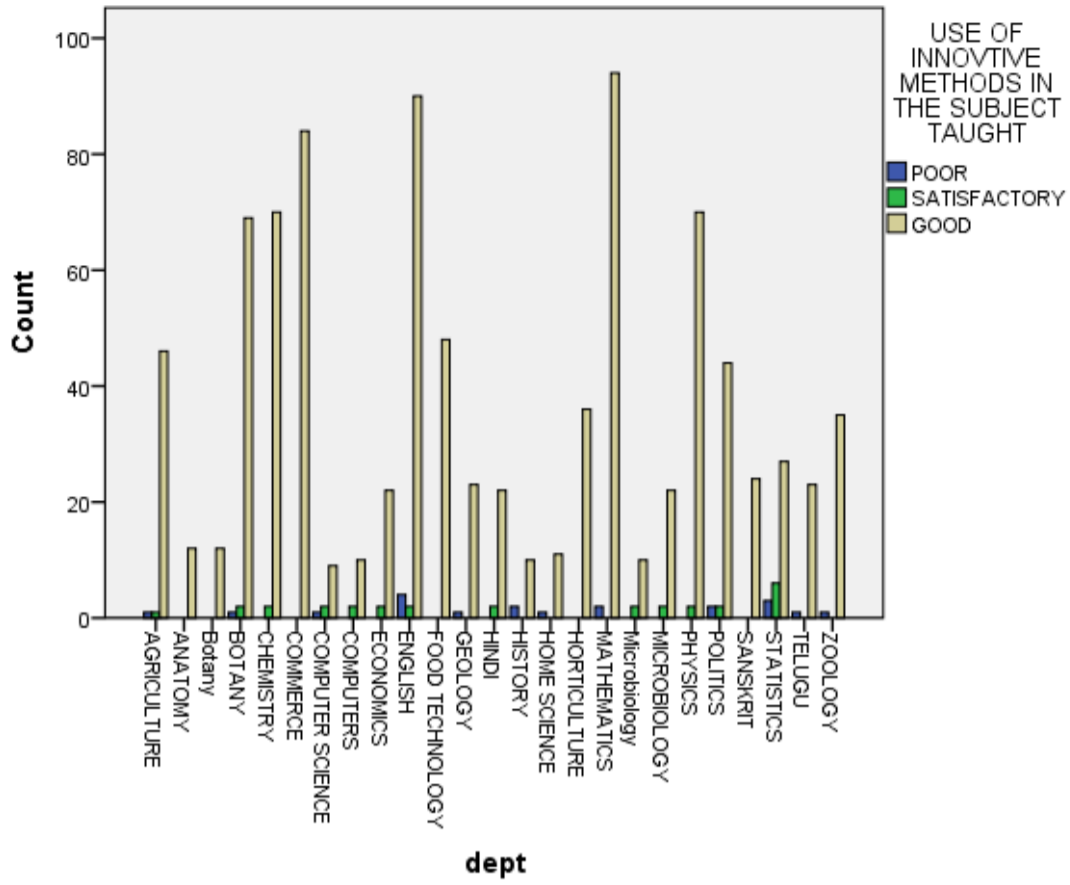
Bar Chart



USE OF INNOVTIVE METHODS IN THE SUBJECT TAUGHT

	USE OF INNOVTIVE METHODS IN THE SUBJECT TAUGHT			Total
	POOR	SATISFACTORY	GOOD	
AGRICULTURE	1	1	46	48
	0.1%	0.1%	4.7%	4.9%
ANATOMY	0	0	12	12
	0.0%	0.0%	1.2%	1.2%
Botany	0	0	12	12
	0.0%	0.0%	1.2%	1.2%
BOTANY	1	2	69	72
	0.1%	0.2%	7.1%	7.4%
CHEMISTRY	0	2	70	72
	0.0%	0.2%	7.2%	7.4%
COMMERCE	0	0	84	84
	0.0%	0.0%	8.6%	8.6%
COMPUTER SCIENCE	1	2	9	12
	0.1%	0.2%	0.9%	1.2%
COMPUTERS	0	2	10	12
	0.0%	0.2%	1.0%	1.2%
ECONOMICS	0	2	22	24
	0.0%	0.2%	2.3%	2.5%
ENGLISH	4	2	90	96
	0.4%	0.2%	9.3%	9.9%
FOOD TECHNOLOGY	0	0	48	48
	0.0%	0.0%	4.9%	4.9%
GEOLOGY	1	0	23	24
	0.1%	0.0%	2.4%	2.5%
HINDI	0	2	22	24
	0.0%	0.2%	2.3%	2.5%
HISTORY	2	0	10	12
	0.2%	0.0%	1.0%	1.2%
HOME SCIENCE	1	0	11	12
	0.1%	0.0%	1.1%	1.2%
HORTICULTURE	0	0	36	36
	0.0%	0.0%	3.7%	3.7%
MATHEMATICS	2	0	94	96
	0.2%	0.0%	9.7%	9.9%
Microbiology	0	2	10	12
	0.0%	0.2%	1.0%	1.2%
MICROBIOLOGY	0	2	22	24
	0.0%	0.2%	2.3%	2.5%
PHYSICS	0	2	70	72
	0.0%	0.2%	7.2%	7.4%
POLITICS	2	2	44	48
	0.2%	0.2%	4.5%	4.9%
SANSKRIT	0	0	24	24
	0.0%	0.0%	2.5%	2.5%
STATISTICS	3	6	27	36
	0.3%	0.6%	2.8%	3.7%
TELUGU	1	0	23	24
	0.1%	0.0%	2.4%	2.5%
ZOOLOGY	1	0	35	36
	0.1%	0.0%	3.6%	3.7%
Total	20	29	923	972
	2.1%	3.0%	95.0%	100.0%

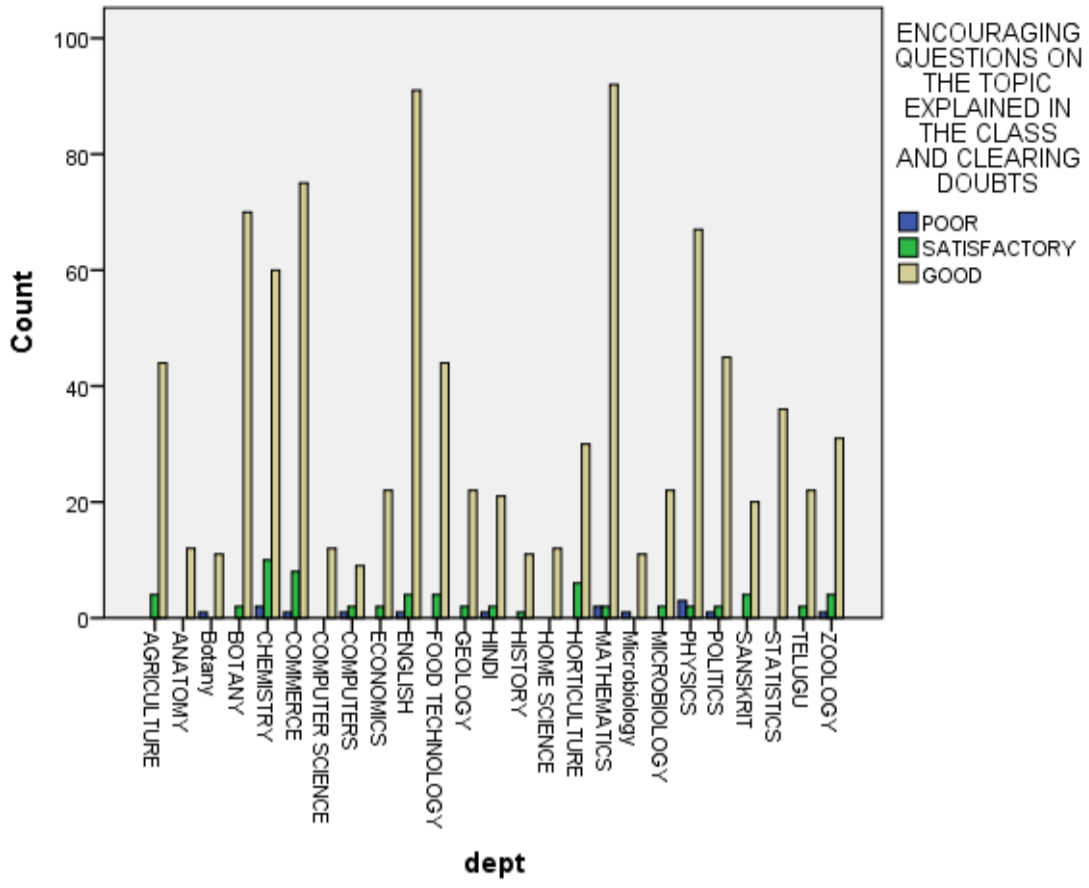
Bar Chart



**ENCOURAGING QUESTIONS ON THE TOPIC EXPLAINED IN THE CLASS
AND CLEARING DOUBTS**

ENCOURAGING QUESTIONS ON THE TOPIC EXPLAINED IN THE CLASS AND CLEARING DOUBTS				Total
	POOR	SATISFACTORY	GOOD	
AGRICULTURE	0	4	44	48
	0.0%	0.4%	4.5%	4.9%
ANATOMY	0	0	12	12
	0.0%	0.0%	1.2%	1.2%
Botany	1	0	11	12
	0.1%	0.0%	1.1%	1.2%
BOTANY	0	2	70	72
	0.0%	0.2%	7.2%	7.4%
CHEMISTRY	2	10	60	72
	0.2%	1.0%	6.2%	7.4%
COMMERCE	1	8	75	84
	0.1%	0.8%	7.7%	8.6%
COMPUTER SCIENCE	0	0	12	12
	0.0%	0.0%	1.2%	1.2%
COMPUTERS	1	2	9	12
	0.1%	0.2%	0.9%	1.2%
ECONOMICS	0	2	22	24
	0.0%	0.2%	2.3%	2.5%
ENGLISH	1	4	91	96
	0.1%	0.4%	9.4%	9.9%
FOOD TECHNOLOGY	0	4	44	48
	0.0%	0.4%	4.5%	4.9%
GEOLOGY	0	2	22	24
	0.0%	0.2%	2.3%	2.5%
HINDI	1	2	21	24
	0.1%	0.2%	2.2%	2.5%
HISTORY	0	1	11	12
	0.0%	0.1%	1.1%	1.2%
HOME SCIENCE	0	0	12	12
	0.0%	0.0%	1.2%	1.2%
HORTICULTURE	0	6	30	36
	0.0%	0.6%	3.1%	3.7%
MATHEMATICS	2	2	92	96
	0.2%	0.2%	9.5%	9.9%
Microbiology	1	0	11	12
	0.1%	0.0%	1.1%	1.2%
MICROBIOLOGY	0	2	22	24
	0.0%	0.2%	2.3%	2.5%
PHYSICS	3	2	67	72
	0.3%	0.2%	6.9%	7.4%
POLITICS	1	2	45	48
	0.1%	0.2%	4.6%	4.9%
SANSKRIT	0	4	20	24
	0.0%	0.4%	2.1%	2.5%
STATISTICS	0	0	36	36
	0.0%	0.0%	3.7%	3.7%
TELUGU	0	2	22	24
	0.0%	0.2%	2.3%	2.5%
ZOOLOGY	1	4	31	36
	0.1%	0.4%	3.2%	3.7%
Total	15	65	892	972
	1.5%	6.7%	91.8%	100.0%

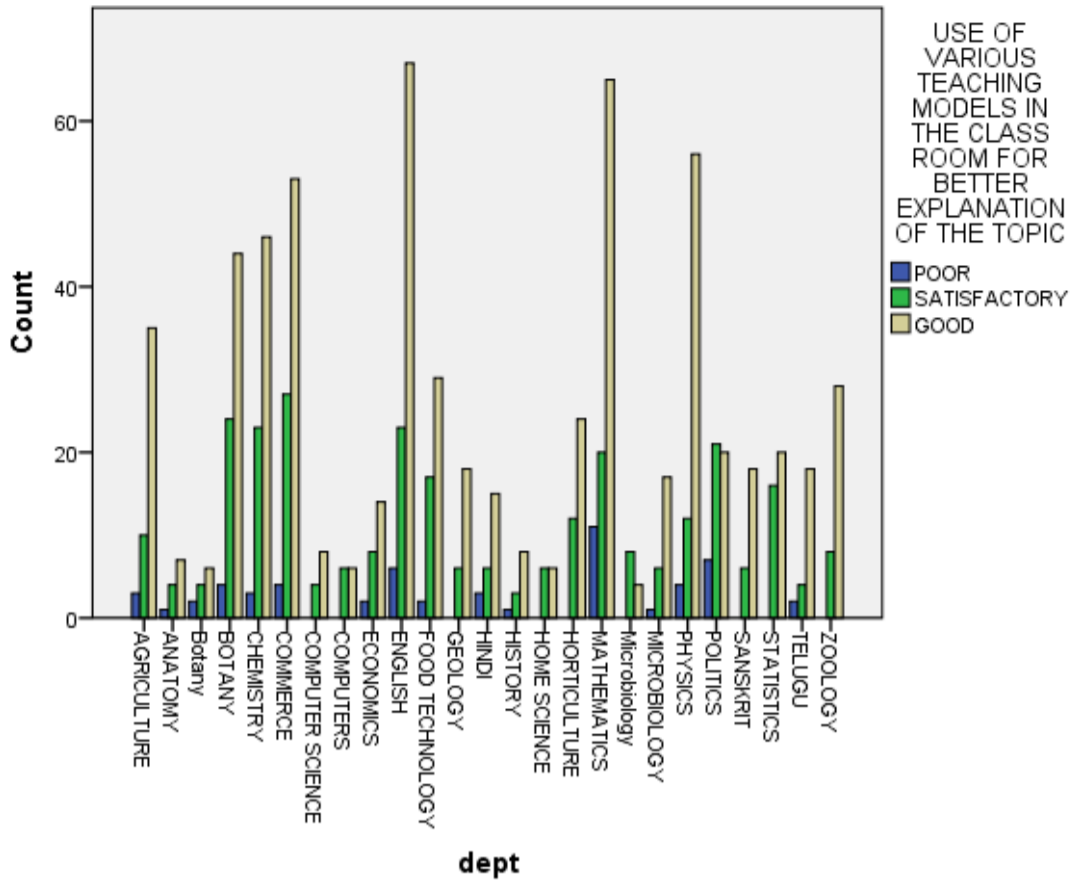
Bar Chart



**USE OF VARIOUS TEACHING MODELS IN THE CLASS ROOM FOR
BETTER EXPLANATION OF THE TOPIC**

USE OF VARIOUS TEACHING MODELS IN THE CLASS ROOM FOR BETTER EXPLANATION OF THE TOPIC				Total
	POOR	SATISFACTORY	GOOD	
AGRICULTURE	3	10	35	48
	0.3%	1.0%	3.6%	4.9%
ANATOMY	1	4	7	12
	0.1%	0.4%	0.7%	1.2%
Botany	2	4	6	12
	0.2%	0.4%	0.6%	1.2%
BOTANY	4	24	44	72
	0.4%	2.5%	4.5%	7.4%
CHEMISTRY	3	23	46	72
	0.3%	2.4%	4.7%	7.4%
COMMERCE	4	27	53	84
	0.4%	2.8%	5.5%	8.6%
COMPUTER SCIENCE	0	4	8	12
	0.0%	0.4%	0.8%	1.2%
COMPUTERS	0	6	6	12
	0.0%	0.6%	0.6%	1.2%
ECONOMICS	2	8	14	24
	0.2%	0.8%	1.4%	2.5%
ENGLISH	6	23	67	96
	0.6%	2.4%	6.9%	9.9%
FOOD TECHNOLOGY	2	17	29	48
	0.2%	1.7%	3.0%	4.9%
GEOLOGY	0	6	18	24
	0.0%	0.6%	1.9%	2.5%
HINDI	3	6	15	24
	0.3%	0.6%	1.5%	2.5%
HISTORY	1	3	8	12
	0.1%	0.3%	0.8%	1.2%
HOME SCIENCE	0	6	6	12
	0.0%	0.6%	0.6%	1.2%
HORTICULTURE	0	12	24	36
	0.0%	1.2%	2.5%	3.7%
MATHEMATICS	11	20	65	96
	1.1%	2.1%	6.7%	9.9%
Microbiology	0	8	4	12
	0.0%	0.8%	0.4%	1.2%
MICROBIOLOGY	1	6	17	24
	0.1%	0.6%	1.7%	2.5%
PHYSICS	4	12	56	72
	0.4%	1.2%	5.8%	7.4%
POLITICS	7	21	20	48
	0.7%	2.2%	2.1%	4.9%
SANSKRIT	0	6	18	24
	0.0%	0.6%	1.9%	2.5%
STATISTICS	0	16	20	36
	0.0%	1.6%	2.1%	3.7%
TELUGU	2	4	18	24
	0.2%	0.4%	1.9%	2.5%
ZOOLOGY	0	8	28	36
	0.0%	0.8%	2.9%	3.7%
Total	56	284	632	972
	5.8%	29.2%	65.0%	100.0%

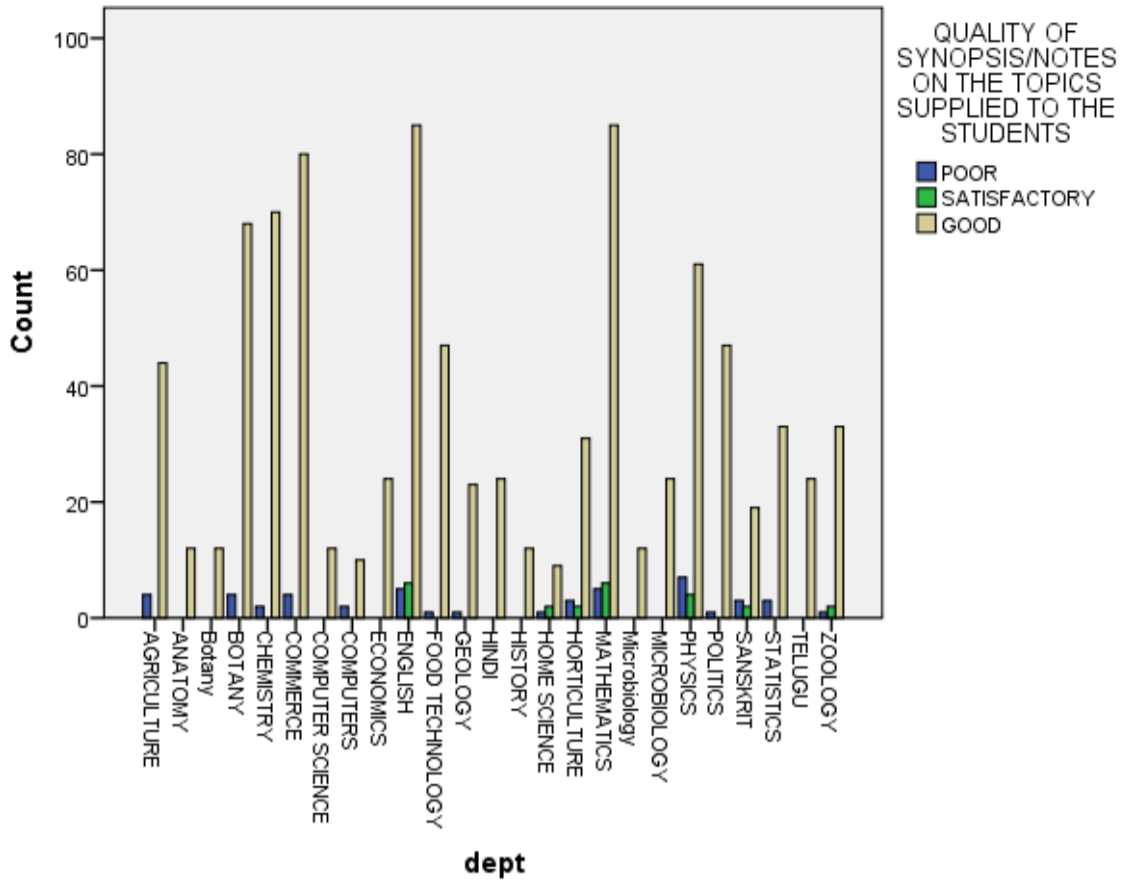
Bar Chart



QUALITY OF SYNOPSIS/NOTES ON THE TOPICS SUPPLIED TO THE STUDENTS

	QUALITY OF SYNOPSIS/NOTES ON THE TOPICS SUPPLIED TO THE STUDENTS			Total
	POOR	SATISFACTORY	GOOD	
AGRICULTURE	4	0	44	48
	0.4%	0.0%	4.5%	4.9%
ANATOMY	0	0	12	12
	0.0%	0.0%	1.2%	1.2%
Botany	0	0	12	12
	0.0%	0.0%	1.2%	1.2%
BOTANY	4	0	68	72
	0.4%	0.0%	7.0%	7.4%
CHEMISTRY	2	0	70	72
	0.2%	0.0%	7.2%	7.4%
COMMERCE	4	0	80	84
	0.4%	0.0%	8.2%	8.6%
COMPUTER SCIENCE	0	0	12	12
	0.0%	0.0%	1.2%	1.2%
COMPUTERS	2	0	10	12
	0.2%	0.0%	1.0%	1.2%
ECONOMICS	0	0	24	24
	0.0%	0.0%	2.5%	2.5%
ENGLISH	5	6	85	96
	0.5%	0.6%	8.7%	9.9%
FOOD TECHNOLOGY	1	0	47	48
	0.1%	0.0%	4.8%	4.9%
GEOLOGY	1	0	23	24
	0.1%	0.0%	2.4%	2.5%
HINDI	0	0	24	24
	0.0%	0.0%	2.5%	2.5%
HISTORY	0	0	12	12
	0.0%	0.0%	1.2%	1.2%
HOME SCIENCE	1	2	9	12
	0.1%	0.2%	0.9%	1.2%
HORTICULTURE	3	2	31	36
	0.3%	0.2%	3.2%	3.7%
MATHEMATICS	5	6	85	96
	0.5%	0.6%	8.7%	9.9%
Microbiology	0	0	12	12
	0.0%	0.0%	1.2%	1.2%
MICROBIOLOGY	0	0	24	24
	0.0%	0.0%	2.5%	2.5%
PHYSICS	7	4	61	72
	0.7%	0.4%	6.3%	7.4%
POLITICS	1	0	47	48
	0.1%	0.0%	4.8%	4.9%
SANSKRIT	3	2	19	24
	0.3%	0.2%	2.0%	2.5%
STATISTICS	3	0	33	36
	0.3%	0.0%	3.4%	3.7%
TELUGU	0	0	24	24
	0.0%	0.0%	2.5%	2.5%
ZOOLOGY	1	2	33	36
	0.1%	0.2%	3.4%	3.7%
Total	47	24	901	972
	4.8%	2.5%	92.7%	100.0%

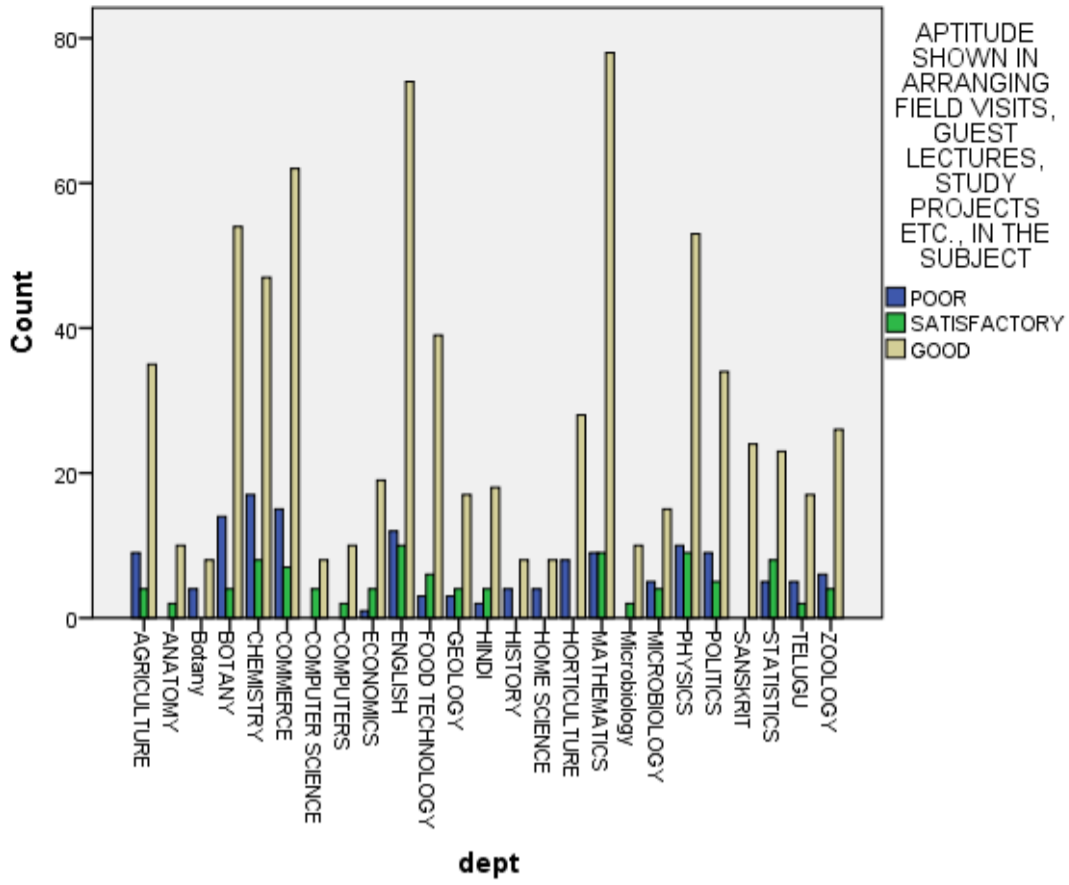
Bar Chart



**APTITUDE SHOWN IN ARRANGING FIELD VISITS, GUEST LECTURES,
STUDY PROJECTS ETC., IN THE SUBJECT**

APTITUDE SHOWN IN ARRANGING FIELD VISITS, GUEST LECTURES, STUDY PROJECTS ETC., IN THE SUBJECT				Total
	POOR	SATISFACTORY	GOOD	
AGRICULTURE	9	4	35	48
	0.9%	0.4%	3.6%	4.9%
ANATOMY	0	2	10	12
	0.0%	0.2%	1.0%	1.2%
Botany	4	0	8	12
	0.4%	0.0%	0.8%	1.2%
BOTANY	14	4	54	72
	1.4%	0.4%	5.6%	7.4%
CHEMISTRY	17	8	47	72
	1.7%	0.8%	4.8%	7.4%
COMMERCE	15	7	62	84
	1.5%	0.7%	6.4%	8.6%
COMPUTER SCIENCE	0	4	8	12
	0.0%	0.4%	0.8%	1.2%
COMPUTERS	0	2	10	12
	0.0%	0.2%	1.0%	1.2%
ECONOMICS	1	4	19	24
	0.1%	0.4%	2.0%	2.5%
ENGLISH	12	10	74	96
	1.2%	1.0%	7.6%	9.9%
FOOD TECHNOLOGY	3	6	39	48
	0.3%	0.6%	4.0%	4.9%
GEOLOGY	3	4	17	24
	0.3%	0.4%	1.7%	2.5%
HINDI	2	4	18	24
	0.2%	0.4%	1.9%	2.5%
HISTORY	4	0	8	12
	0.4%	0.0%	0.8%	1.2%
HOME SCIENCE	4	0	8	12
	0.4%	0.0%	0.8%	1.2%
HORTICULTURE	8	0	28	36
	0.8%	0.0%	2.9%	3.7%
MATHEMATICS	9	9	78	96
	0.9%	0.9%	8.0%	9.9%
Microbiology	0	2	10	12
	0.0%	0.2%	1.0%	1.2%
MICROBIOLOGY	5	4	15	24
	0.5%	0.4%	1.5%	2.5%
PHYSICS	10	9	53	72
	1.0%	0.9%	5.5%	7.4%
POLITICS	9	5	34	48
	0.9%	0.5%	3.5%	4.9%
SANSKRIT	0	0	24	24
	0.0%	0.0%	2.5%	2.5%
STATISTICS	5	8	23	36
	0.5%	0.8%	2.4%	3.7%
TELUGU	5	2	17	24
	0.5%	0.2%	1.7%	2.5%
ZOOLOGY	6	4	26	36
	0.6%	0.4%	2.7%	3.7%
Total	145	102	725	972
	14.9%	10.5%	74.6%	100.0%

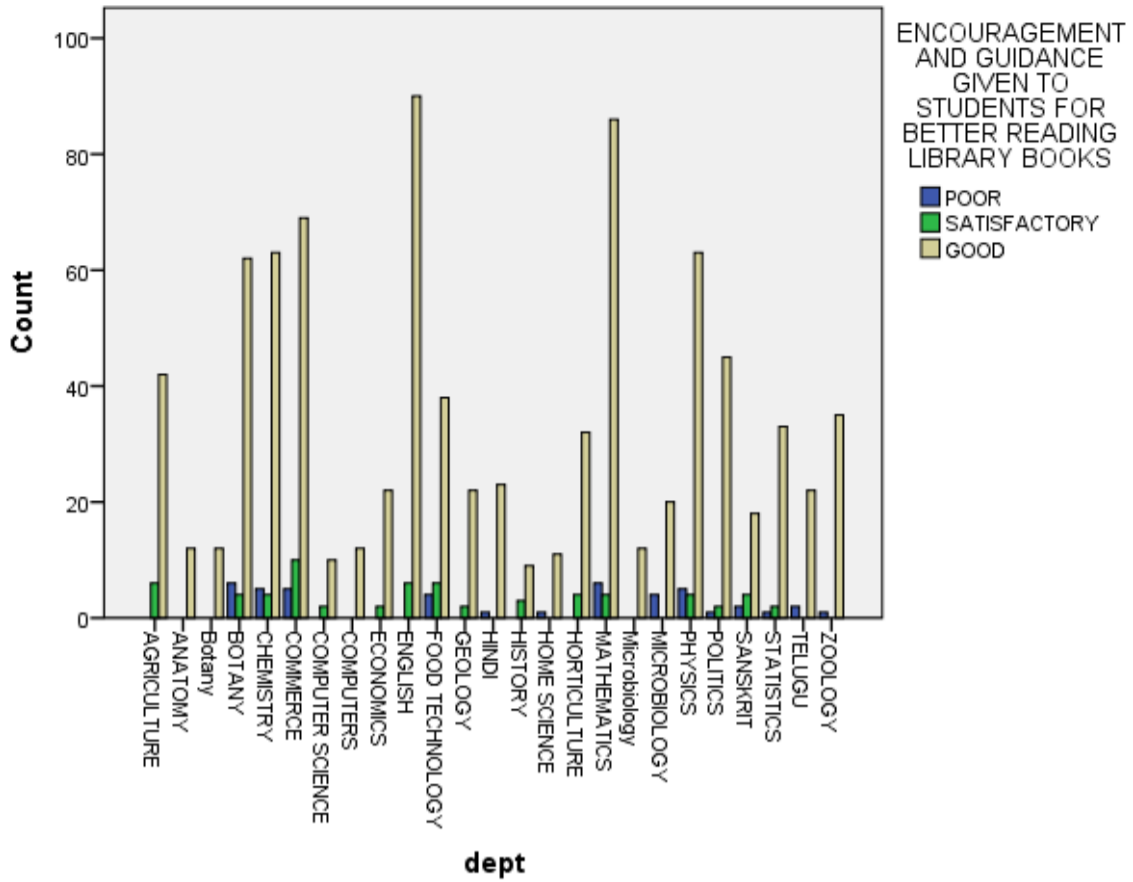
Bar Chart



**ENCOURAGEMENT AND GUIDANCE GIVEN TO STUDENTS FOR BETTER
READING LIBRARY BOOKS**

ENCOURAGEMENT AND GUIDANCE GIVEN TO STUDENTS FOR BETTER READING LIBRARY BOOKS				Total
	POOR	SATISFACTORY	GOOD	
AGRICULTURE	0	6	42	48
	0.0%	0.6%	4.3%	4.9%
ANATOMY	0	0	12	12
	0.0%	0.0%	1.2%	1.2%
Botany	0	0	12	12
	0.0%	0.0%	1.2%	1.2%
BOTANY	6	4	62	72
	0.6%	0.4%	6.4%	7.4%
CHEMISTRY	5	4	63	72
	0.5%	0.4%	6.5%	7.4%
COMMERCE	5	10	69	84
	0.5%	1.0%	7.1%	8.6%
COMPUTER SCIENCE	0	2	10	12
	0.0%	0.2%	1.0%	1.2%
COMPUTERS	0	0	12	12
	0.0%	0.0%	1.2%	1.2%
ECONOMICS	0	2	22	24
	0.0%	0.2%	2.3%	2.5%
ENGLISH	0	6	90	96
	0.0%	0.6%	9.3%	9.9%
FOOD TECHNOLOGY	4	6	38	48
	0.4%	0.6%	3.9%	4.9%
GEOLOGY	0	2	22	24
	0.0%	0.2%	2.3%	2.5%
HINDI	1	0	23	24
	0.1%	0.0%	2.4%	2.5%
HISTORY	0	3	9	12
	0.0%	0.3%	0.9%	1.2%
HOME SCIENCE	1	0	11	12
	0.1%	0.0%	1.1%	1.2%
HORTICULTURE	0	4	32	36
	0.0%	0.4%	3.3%	3.7%
MATHEMATICS	6	4	86	96
	0.6%	0.4%	8.8%	9.9%
Microbiology	0	0	12	12
	0.0%	0.0%	1.2%	1.2%
MICROBIOLOGY	4	0	20	24
	0.4%	0.0%	2.1%	2.5%
PHYSICS	5	4	63	72
	0.5%	0.4%	6.5%	7.4%
POLITICS	1	2	45	48
	0.1%	0.2%	4.6%	4.9%
SANSKRIT	2	4	18	24
	0.2%	0.4%	1.9%	2.5%
STATISTICS	1	2	33	36
	0.1%	0.2%	3.4%	3.7%
TELUGU	2	0	22	24
	0.2%	0.0%	2.3%	2.5%
ZOOLOGY	1	0	35	36
	0.1%	0.0%	3.6%	3.7%
Total	44	65	863	972
	4.5%	6.7%	88.8%	100.0%

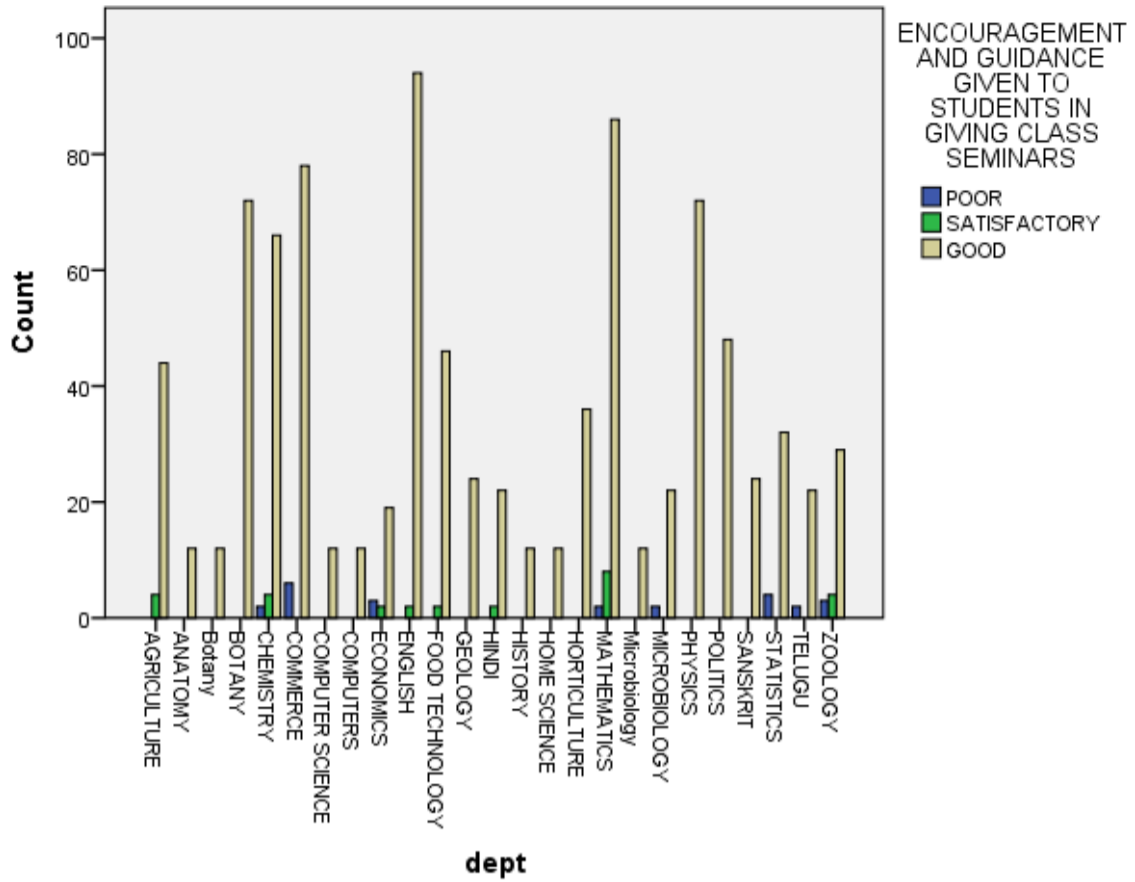
Bar Chart



**ENCOURAGEMENT AND GUIDANCE GIVEN TO STUDENTS IN GIVING
CLASS SEMINARS**

ENCOURAGEMENT AND GUIDANCE GIVEN TO STUDENTS IN GIVING CLASS SEMINARS				Total
	POOR	SATISFACTORY	GOOD	
AGRICULTURE	0	4	44	48
	0.0%	0.4%	4.5%	4.9%
ANATOMY	0	0	12	12
	0.0%	0.0%	1.2%	1.2%
Botany	0	0	12	12
	0.0%	0.0%	1.2%	1.2%
BOTANY	0	0	72	72
	0.0%	0.0%	7.4%	7.4%
CHEMISTRY	2	4	66	72
	0.2%	0.4%	6.8%	7.4%
COMMERCE	6	0	78	84
	0.6%	0.0%	8.0%	8.6%
COMPUTER SCIENCE	0	0	12	12
	0.0%	0.0%	1.2%	1.2%
COMPUTERS	0	0	12	12
	0.0%	0.0%	1.2%	1.2%
ECONOMICS	3	2	19	24
	0.3%	0.2%	2.0%	2.5%
ENGLISH	0	2	94	96
	0.0%	0.2%	9.7%	9.9%
FOOD TECHNOLOGY	0	2	46	48
	0.0%	0.2%	4.7%	4.9%
GEOLOGY	0	0	24	24
	0.0%	0.0%	2.5%	2.5%
HINDI	0	2	22	24
	0.0%	0.2%	2.3%	2.5%
HISTORY	0	0	12	12
	0.0%	0.0%	1.2%	1.2%
HOME SCIENCE	0	0	12	12
	0.0%	0.0%	1.2%	1.2%
HORTICULTURE	0	0	36	36
	0.0%	0.0%	3.7%	3.7%
MATHEMATICS	2	8	86	96
	0.2%	0.8%	8.8%	9.9%
Microbiology	0	0	12	12
	0.0%	0.0%	1.2%	1.2%
MICROBIOLOGY	2	0	22	24
	0.2%	0.0%	2.3%	2.5%
PHYSICS	0	0	72	72
	0.0%	0.0%	7.4%	7.4%
POLITICS	0	0	48	48
	0.0%	0.0%	4.9%	4.9%
SANSKRIT	0	0	24	24
	0.0%	0.0%	2.5%	2.5%
STATISTICS	4	0	32	36
	0.4%	0.0%	3.3%	3.7%
TELUGU	2	0	22	24
	0.2%	0.0%	2.3%	2.5%
ZOOLOGY	3	4	29	36
	0.3%	0.4%	3.0%	3.7%
Total	24	28	920	972
	2.5%	2.9%	94.7%	100.0%

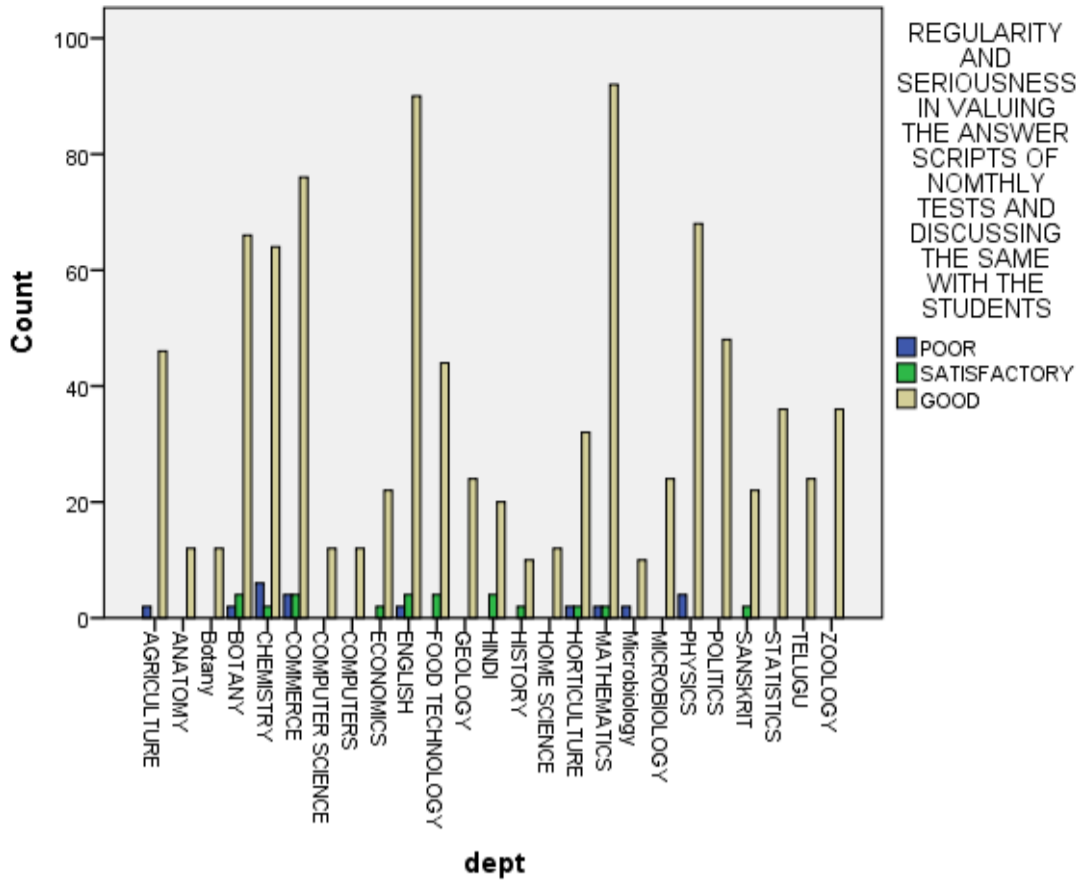
Bar Chart



REGULARITY AND SERIOUSNESS IN VALUING THE ANSWER SCRIPTS OF NOMTHLY TESTS AND DISCUSSING THE SAME WITH THE STUDENTS

REGULARITY AND SERIOUSNESS IN VALUING THE ANSWER SCRIPTS OF NOMTHLY TESTS AND DISCUSSING THE SAME WITH THE STUDENTS				Total
	POOR	SATISFACTORY	GOOD	
AGRICULTURE	2	0	46	48
	0.2%	0.0%	4.7%	4.9%
ANATOMY	0	0	12	12
	0.0%	0.0%	1.2%	1.2%
Botany	0	0	12	12
	0.0%	0.0%	1.2%	1.2%
BOTANY	2	4	66	72
	0.2%	0.4%	6.8%	7.4%
CHEMISTRY	6	2	64	72
	0.6%	0.2%	6.6%	7.4%
COMMERCE	4	4	76	84
	0.4%	0.4%	7.8%	8.6%
COMPUTER SCIENCE	0	0	12	12
	0.0%	0.0%	1.2%	1.2%
COMPUTERS	0	0	12	12
	0.0%	0.0%	1.2%	1.2%
ECONOMICS	0	2	22	24
	0.0%	0.2%	2.3%	2.5%
ENGLISH	2	4	90	96
	0.2%	0.4%	9.3%	9.9%
FOOD TECHNOLOGY	0	4	44	48
	0.0%	0.4%	4.5%	4.9%
GEOLOGY	0	0	24	24
	0.0%	0.0%	2.5%	2.5%
HINDI	0	4	20	24
	0.0%	0.4%	2.1%	2.5%
HISTORY	0	2	10	12
	0.0%	0.2%	1.0%	1.2%
HOME SCIENCE	0	0	12	12
	0.0%	0.0%	1.2%	1.2%
HORTICULTURE	2	2	32	36
	0.2%	0.2%	3.3%	3.7%
MATHEMATICS	2	2	92	96
	0.2%	0.2%	9.5%	9.9%
Microbiology	2	0	10	12
	0.2%	0.0%	1.0%	1.2%
MICROBIOLOGY	0	0	24	24
	0.0%	0.0%	2.5%	2.5%
PHYSICS	4	0	68	72
	0.4%	0.0%	7.0%	7.4%
POLITICS	0	0	48	48
	0.0%	0.0%	4.9%	4.9%
SANSKRIT	0	2	22	24
	0.0%	0.2%	2.3%	2.5%
STATISTICS	0	0	36	36
	0.0%	0.0%	3.7%	3.7%
TELUGU	0	0	24	24
	0.0%	0.0%	2.5%	2.5%
ZOOLOGY	0	0	36	36
	0.0%	0.0%	3.7%	3.7%
Total	26	32	914	972
	2.7%	3.3%	94.0%	100.0%

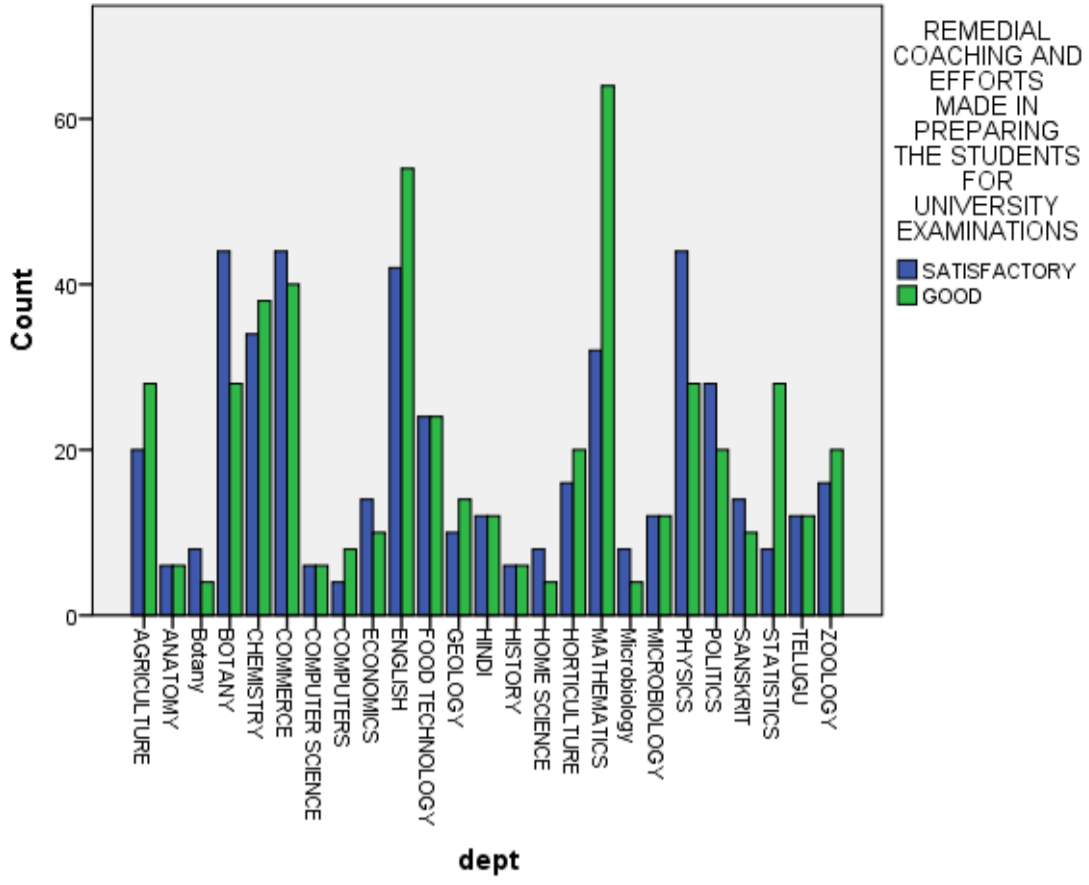
Bar Chart



**REMEDIAL COACHING AND EFFORTS MADE IN
PREPARING THE STUDENTS FOR UNIVERSITY
EXAMINATIONS**

REMEDIAL COACHING AND EFFORTS MADE IN PREPARING THE STUDENTS FOR UNIVERSITY EXAMINATIONS			Total
	SATISFACTORY	GOOD	
AGRICULTURE	20	28	48
	2.1%	2.9%	4.9%
ANATOMY	6	6	12
	0.6%	0.6%	1.2%
Botany	8	4	12
	0.8%	0.4%	1.2%
BOTANY	44	28	72
	4.5%	2.9%	7.4%
CHEMISTRY	34	38	72
	3.5%	3.9%	7.4%
COMMERCE	44	40	84
	4.5%	4.1%	8.6%
COMPUTER SCIENCE	6	6	12
	0.6%	0.6%	1.2%
COMPUTERS	4	8	12
	0.4%	0.8%	1.2%
ECONOMICS	14	10	24
	1.4%	1.0%	2.5%
ENGLISH	42	54	96
	4.3%	5.6%	9.9%
FOOD TECHNOLOGY	24	24	48
	2.5%	2.5%	4.9%
GEOLOGY	10	14	24
	1.0%	1.4%	2.5%
HINDI	12	12	24
	1.2%	1.2%	2.5%
HISTORY	6	6	12
	0.6%	0.6%	1.2%
HOME SCIENCE	8	4	12
	0.8%	0.4%	1.2%
HORTICULTURE	16	20	36
	1.6%	2.1%	3.7%
MATHEMATICS	32	64	96
	3.3%	6.6%	9.9%
Microbiology	8	4	12
	0.8%	0.4%	1.2%
MICROBIOLOGY	12	12	24
	1.2%	1.2%	2.5%
PHYSICS	44	28	72
	4.5%	2.9%	7.4%
POLITICS	28	20	48
	2.9%	2.1%	4.9%
SANSKRIT	14	10	24
	1.4%	1.0%	2.5%
STATISTICS	8	28	36
	0.8%	2.9%	3.7%
TELUGU	12	12	24
	1.2%	1.2%	2.5%
ZOOLOGY	16	20	36
	1.6%	2.1%	3.7%
Total	472	500	972
	48.6%	51.4%	100.0%

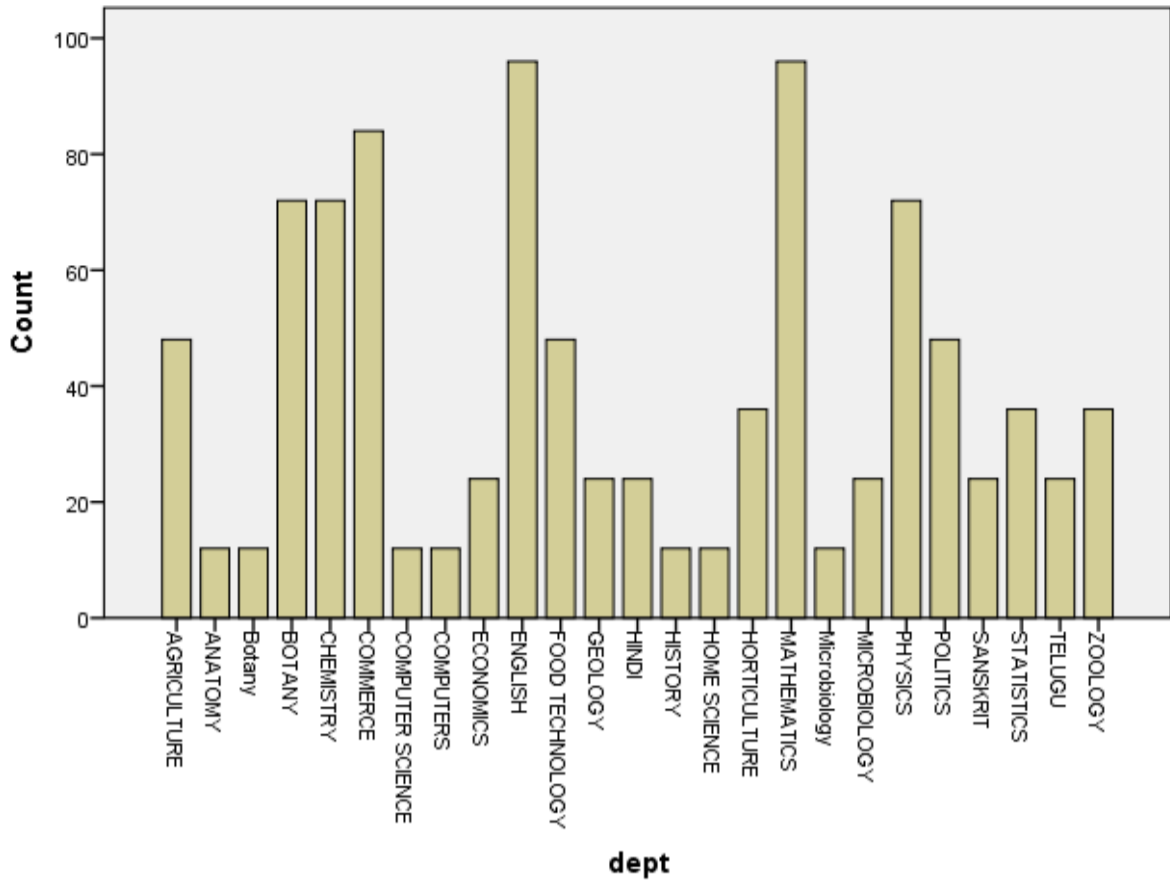
Bar Chart



**REGULARITY AND PUNCTUALITY TO THE
CLASS**

REGULARITY AND PUNCTUALITY TO THE CLASS		Total
	GOOD	
AGRICULTURE	48	48
	4.9%	4.9%
ANATOMY	12	12
	1.2%	1.2%
Botany	12	12
	1.2%	1.2%
BOTANY	72	72
	7.4%	7.4%
CHEMISTRY	72	72
	7.4%	7.4%
COMMERCE	84	84
	8.6%	8.6%
COMPUTER SCIENCE	12	12
	1.2%	1.2%
COMPUTERS	12	12
	1.2%	1.2%
ECONOMICS	24	24
	2.5%	2.5%
ENGLISH	96	96
	9.9%	9.9%
FOOD TECHNOLOGY	48	48
	4.9%	4.9%
GEOLOGY	24	24
	2.5%	2.5%
HINDI	24	24
	2.5%	2.5%
HISTORY	12	12
	1.2%	1.2%
HOME SCIENCE	12	12
	1.2%	1.2%
HORTICULTURE	36	36
	3.7%	3.7%
MATHEMATICS	96	96
	9.9%	9.9%
Microbiology	12	12
	1.2%	1.2%
MICROBIOLOGY	24	24
	2.5%	2.5%
PHYSICS	72	72
	7.4%	7.4%
POLITICS	48	48
	4.9%	4.9%
SANSKRIT	24	24
	2.5%	2.5%
STATISTICS	36	36
	3.7%	3.7%
TELUGU	24	24
	2.5%	2.5%
ZOOLOGY	36	36
	3.7%	3.7%
	972	972
	100.0%	100.0%

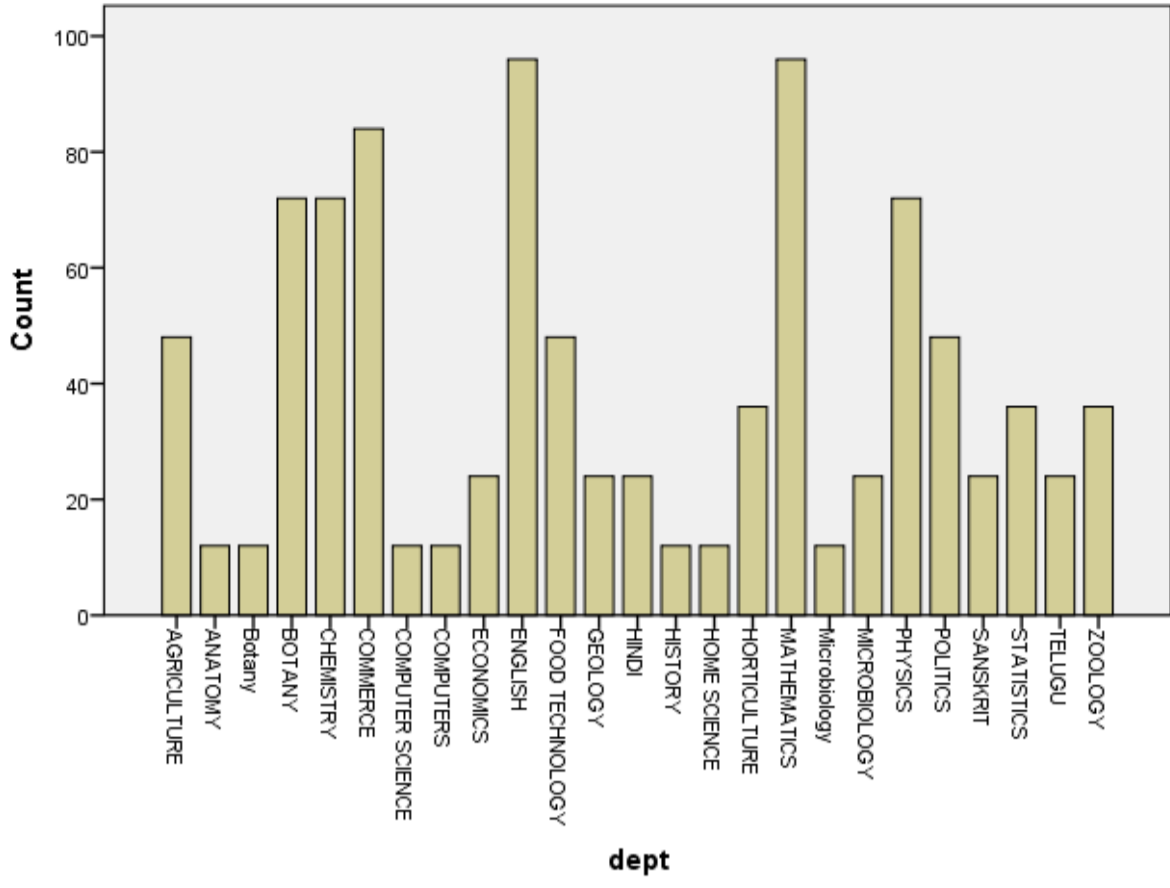
Bar Chart



**ENTHU SIASM SHOWN TO ENCOURAGE AND
GUIDE STUENTS IN CURRICULAR, EXTRA-
CURRICULAR, CULTURAL ACTIVITIES,
COMMUNITY SERVICE ETC.,**

ENTHUSIASM SHOWN TO ENCOURAGE AND GUIDE STUENTS IN CURRICULAR, EXTRA-CURRICULAR, CULTURAL ACTIVITIES, COMMUNITY SERVICE ETC.,		Total
	GOOD	
AGRICULTURE	48	48
	4.9%	4.9%
ANATOMY	12	12
	1.2%	1.2%
Botany	12	12
	1.2%	1.2%
BOTANY	72	72
	7.4%	7.4%
CHEMISTRY	72	72
	7.4%	7.4%
COMMERCE	84	84
	8.6%	8.6%
COMPUTER SCIENCE	12	12
	1.2%	1.2%
COMPUTERS	12	12
	1.2%	1.2%
ECONOMICS	24	24
	2.5%	2.5%
ENGLISH	96	96
	9.9%	9.9%
FOOD TECHNOLOGY	48	48
	4.9%	4.9%
GEOLOGY	24	24
	2.5%	2.5%
HINDI	24	24
	2.5%	2.5%
HISTORY	12	12
	1.2%	1.2%
HOME SCIENCE	12	12
	1.2%	1.2%
HORTICULTURE	36	36
	3.7%	3.7%
MATHEMATICS	96	96
	9.9%	9.9%
Microbiology	12	12
	1.2%	1.2%
MICROBIOLOGY	24	24
	2.5%	2.5%
PHYSICS	72	72
	7.4%	7.4%
POLITICS	48	48
	4.9%	4.9%
SANSKRIT	24	24
	2.5%	2.5%
STATISTICS	36	36
	3.7%	3.7%
TELUGU	24	24
	2.5%	2.5%
ZOOLOGY	36	36
	3.7%	3.7%
Total	972	972
	100.0%	100.0%

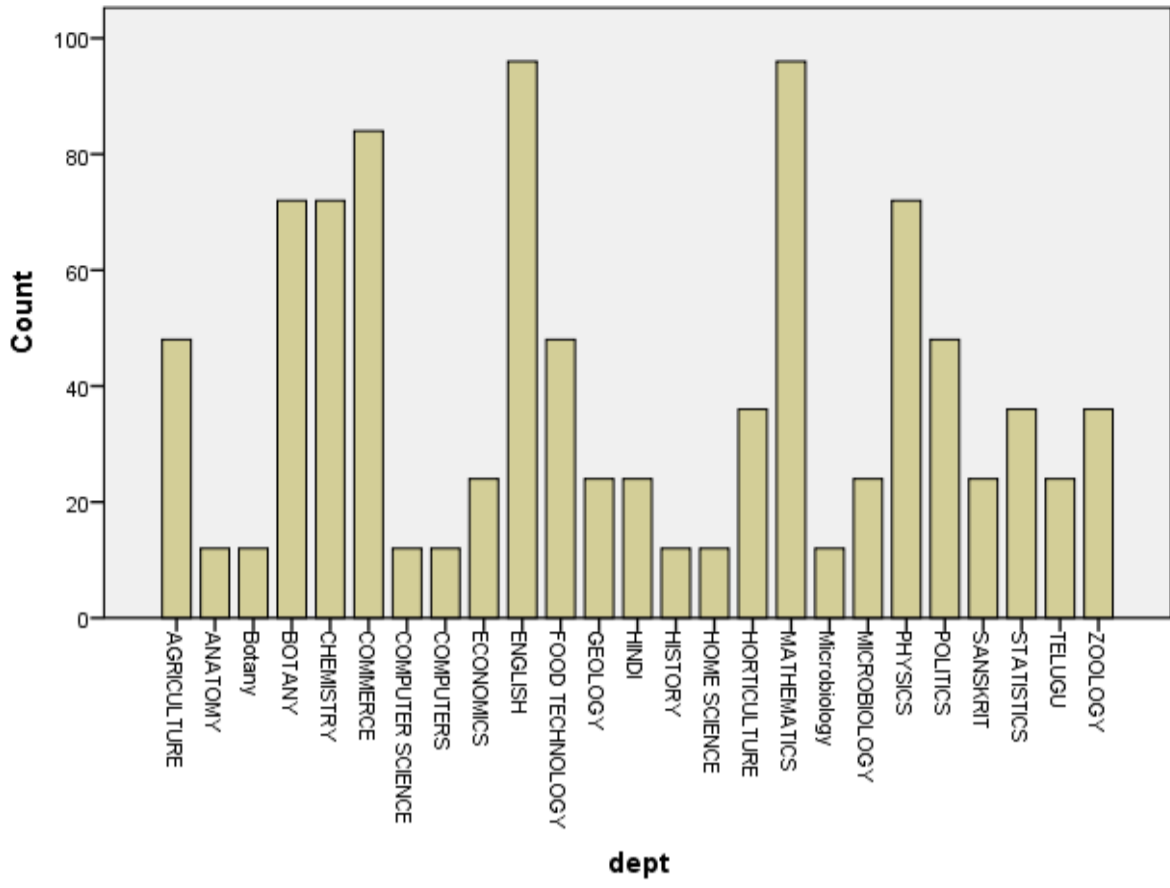
Bar Chart



COUNSELLING AND CAREER GUIDENCE

COUNSELLING AND CAREER GUIDENCE		Total
	GOOD	
AGRICULTURE	48	48
	4.9%	4.9%
ANATOMY	12	12
	1.2%	1.2%
Botany	12	12
	1.2%	1.2%
BOTANY	72	72
	7.4%	7.4%
CHEMISTRY	72	72
	7.4%	7.4%
COMMERCE	84	84
	8.6%	8.6%
COMPUTER SCIENCE	12	12
	1.2%	1.2%
COMPUTERS	12	12
	1.2%	1.2%
ECONOMICS	24	24
	2.5%	2.5%
ENGLISH	96	96
	9.9%	9.9%
FOOD TECHNOLOGY	48	48
	4.9%	4.9%
GEOLOGY	24	24
	2.5%	2.5%
HINDI	24	24
	2.5%	2.5%
HISTORY	12	12
	1.2%	1.2%
HOME SCIENCE	12	12
	1.2%	1.2%
HORTICULTURE	36	36
	3.7%	3.7%
MATHEMATICS	96	96
	9.9%	9.9%
Microbiology	12	12
	1.2%	1.2%
MICROBIOLOGY	24	24
	2.5%	2.5%
PHYSICS	72	72
	7.4%	7.4%
POLITICS	48	48
	4.9%	4.9%
SANSKRIT	24	24
	2.5%	2.5%
STATISTICS	36	36
	3.7%	3.7%
TELUGU	24	24
	2.5%	2.5%
ZOOLOGY	36	36
	3.7%	3.7%
Total	972	972
	100.0%	100.0%

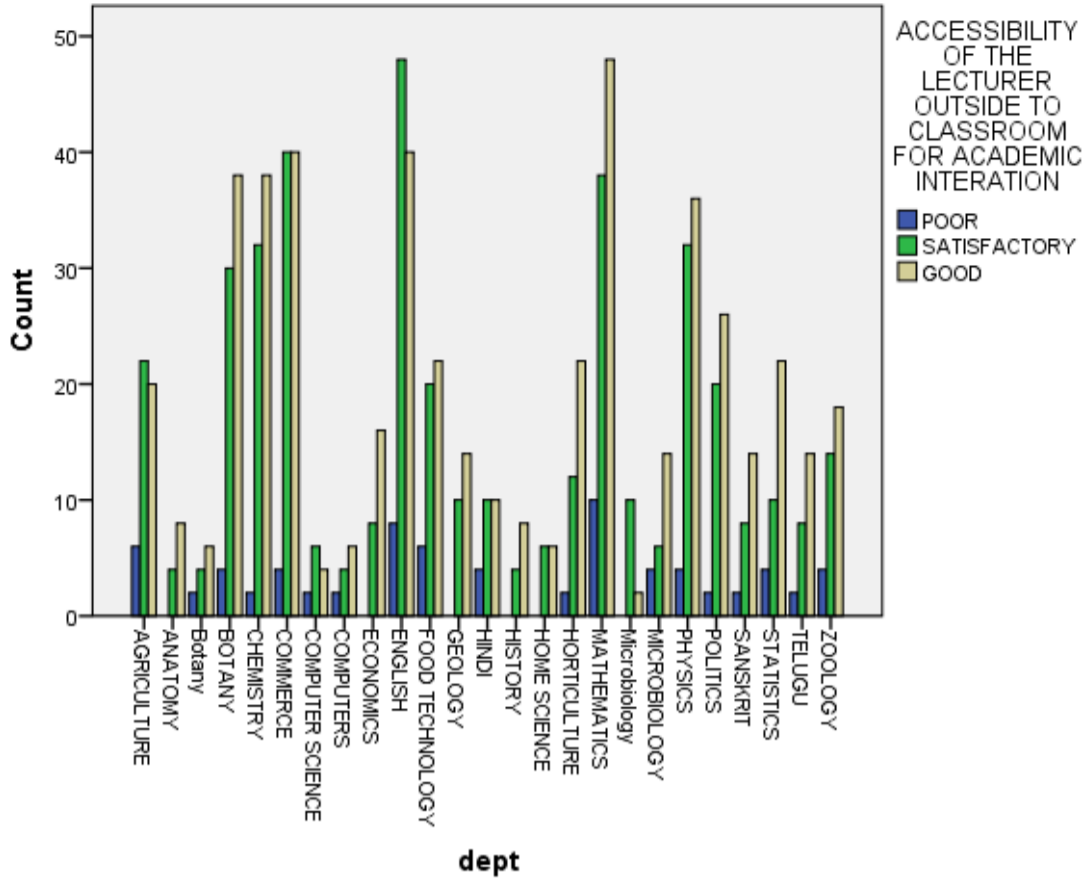
Bar Chart



**ACCESSIBILITY OF THE LECTURER OUTSIDE TO CLASSROOM FOR
ACADEMIC INTERATION**

ACCESSIBILITY OF THE LECTURER OUTSIDE TO CLASSROOM FOR ACADEMIC INTERATION				Total
	POOR	SATISFACTORY	GOOD	
AGRICULTURE	6	22	20	48
	0.6%	2.3%	2.1%	4.9%
ANATOMY	0	4	8	12
	0.0%	0.4%	0.8%	1.2%
Botany	2	4	6	12
	0.2%	0.4%	0.6%	1.2%
BOTANY	4	30	38	72
	0.4%	3.1%	3.9%	7.4%
CHEMISTRY	2	32	38	72
	0.2%	3.3%	3.9%	7.4%
COMMERCE	4	40	40	84
	0.4%	4.1%	4.1%	8.6%
COMPUTER SCIENCE	2	6	4	12
	0.2%	0.6%	0.4%	1.2%
COMPUTERS	2	4	6	12
	0.2%	0.4%	0.6%	1.2%
ECONOMICS	0	8	16	24
	0.0%	0.8%	1.6%	2.5%
ENGLISH	8	48	40	96
	0.8%	4.9%	4.1%	9.9%
FOOD TECHNOLOGY	6	20	22	48
	0.6%	2.1%	2.3%	4.9%
GEOLOGY	0	10	14	24
	0.0%	1.0%	1.4%	2.5%
HINDI	4	10	10	24
	0.4%	1.0%	1.0%	2.5%
HISTORY	0	4	8	12
	0.0%	0.4%	0.8%	1.2%
HOME SCIENCE	0	6	6	12
	0.0%	0.6%	0.6%	1.2%
HORTICULTURE	2	12	22	36
	0.2%	1.2%	2.3%	3.7%
MATHEMATICS	10	38	48	96
	1.0%	3.9%	4.9%	9.9%
Microbiology	0	10	2	12
	0.0%	1.0%	0.2%	1.2%
MICROBIOLOGY	4	6	14	24
	0.4%	0.6%	1.4%	2.5%
PHYSICS	4	32	36	72
	0.4%	3.3%	3.7%	7.4%
POLITICS	2	20	26	48
	0.2%	2.1%	2.7%	4.9%
SANSKRIT	2	8	14	24
	0.2%	0.8%	1.4%	2.5%
STATISTICS	4	10	22	36
	0.4%	1.0%	2.3%	3.7%
TELUGU	2	8	14	24
	0.2%	0.8%	1.4%	2.5%
ZOOLOGY	4	14	18	36
	0.4%	1.4%	1.9%	3.7%
Total	74	406	492	972
	7.6%	41.8%	50.6%	100.0%

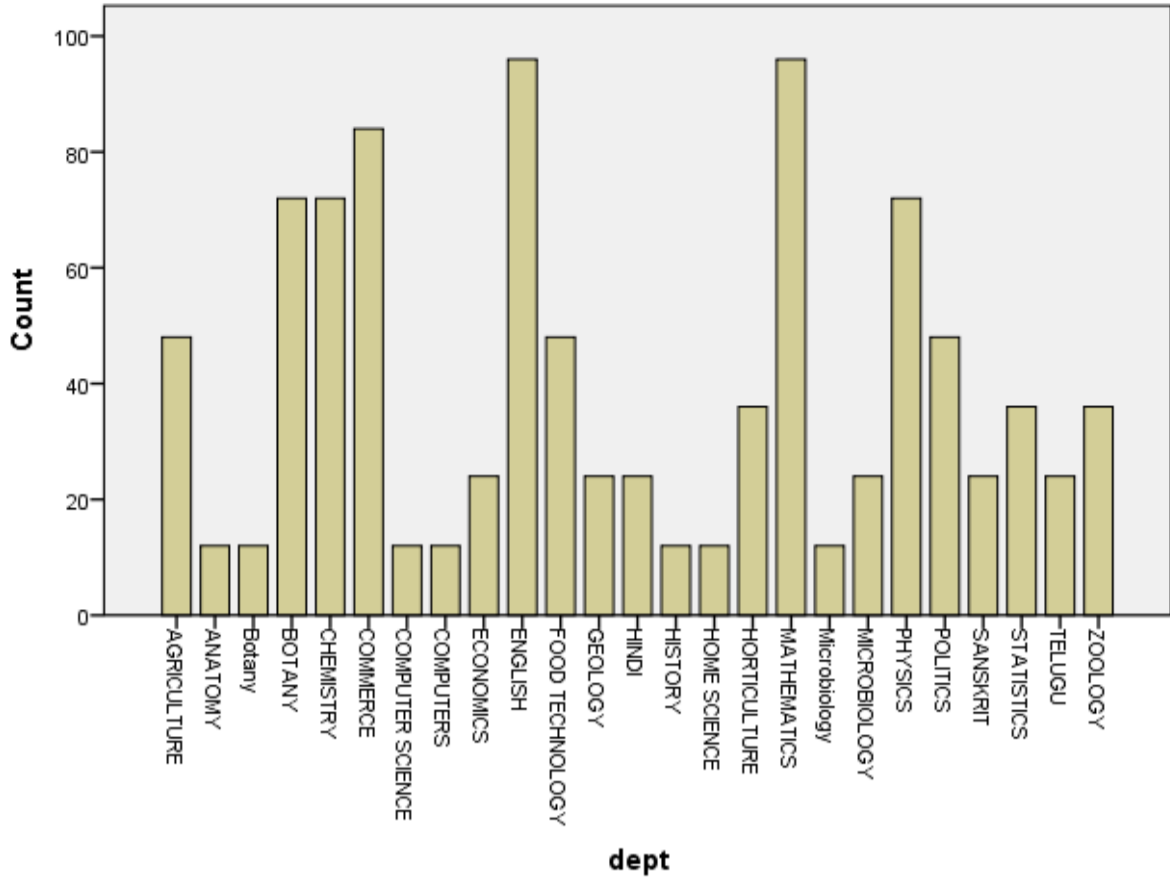
Bar Chart



**PERSONAL CARE AND AFFECTION
WHILE DEALING WITH INDIVIDUAL
STUDENTS AND HELPING STUDENTS**

PERSONAL CARE AND AFFECTION WHILE DEALING WITH INDIVIDUAL STUDENTS AND HELPING STUDENTS		Total
	GOOD	
AGRICULTURE	48	48
	4.9%	4.9%
ANATOMY	12	12
	1.2%	1.2%
Botany	12	12
	1.2%	1.2%
BOTANY	72	72
	7.4%	7.4%
CHEMISTRY	72	72
	7.4%	7.4%
COMMERCE	84	84
	8.6%	8.6%
COMPUTER SCIENCE	12	12
	1.2%	1.2%
COMPUTERS	12	12
	1.2%	1.2%
ECONOMICS	24	24
	2.5%	2.5%
ENGLISH	96	96
	9.9%	9.9%
FOOD TECHNOLOGY	48	48
	4.9%	4.9%
GEOLOGY	24	24
	2.5%	2.5%
HINDI	24	24
	2.5%	2.5%
HISTORY	12	12
	1.2%	1.2%
HOME SCIENCE	12	12
	1.2%	1.2%
HORTICULTURE	36	36
	3.7%	3.7%
MATHEMATICS	96	96
	9.9%	9.9%
Microbiology	12	12
	1.2%	1.2%
MICROBIOLOGY	24	24
	2.5%	2.5%
PHYSICS	72	72
	7.4%	7.4%
POLITICS	48	48
	4.9%	4.9%
SANSKRIT	24	24
	2.5%	2.5%
STATISTICS	36	36
	3.7%	3.7%
TELUGU	24	24
	2.5%	2.5%
ZOOLOGY	36	36
	3.7%	3.7%
Total	972	972
	100.0%	100.0%

Bar Chart



OVERALL OPENION ON THE LECTURER

OVERALL OPENION ON THE LECTURER		Total
	GOOD	
AGRICULTURE	48	48
	4.9%	4.9%
ANATOMY	12	12
	1.2%	1.2%
Botany	12	12
	1.2%	1.2%
BOTANY	72	72
	7.4%	7.4%
CHEMISTRY	72	72
	7.4%	7.4%
COMMERCE	84	84
	8.6%	8.6%
COMPUTER SCIENCE	12	12
	1.2%	1.2%
COMPUTERS	12	12
	1.2%	1.2%
ECONOMICS	24	24
	2.5%	2.5%
ENGLISH	96	96
	9.9%	9.9%
FOOD TECHNOLOGY	48	48
	4.9%	4.9%
GEOLOGY	24	24
	2.5%	2.5%
HINDI	24	24
	2.5%	2.5%
HISTORY	12	12
	1.2%	1.2%
HOME SCIENCE	12	12
	1.2%	1.2%
HORTICULTURE	36	36
	3.7%	3.7%
MATHEMATICS	96	96
	9.9%	9.9%
Microbiology	12	12
	1.2%	1.2%
MICROBIOLOGY	24	24
	2.5%	2.5%
PHYSICS	72	72
	7.4%	7.4%
POLITICS	48	48
	4.9%	4.9%
SANSKRIT	24	24
	2.5%	2.5%
STATISTICS	36	36
	3.7%	3.7%
TELUGU	24	24
	2.5%	2.5%
ZOOLOGY	36	36
	3.7%	3.7%
Total	972	972
	100.0%	100.0 %

Bar Chart

