

HINDU COLLEGE :: GUNTUR



FEED BACK

2023-24

HINDU COLLEGE :: GUNTUR

TEACHERS' FEEDBACK ON CURRICULUM

NAME OF THE FACULTY :

NAME OF THE DEPARTMENT :

SUBJECT / PAPER :

This questionnaire is intended to collect information relating to your satisfaction towards the curriculum, teaching, learning and evaluation. The information provided by you will be kept confidential and will be used as important feedback for quality improvement of the programme of studies/ institution.

1. Syllabus is suitable to the course.

1. Excellent 2. Good 3. Average 4. Poor

2. Syllabus is need based.

1. Excellent 2. Good 3. Average 4. Poor

3. Aims and objectives of the syllabi are well defined and clear to teachers and students.

1. Excellent 2. Good 3. Average 4. Poor

4. Course content is followed by corresponding reference materials.

1. Excellent 2. Good 3. Average 4. Poor

5. Sufficient number of prescribed books are available in the Library.

1. Excellent 2. Good 3. Average 4. Poor

6. The course/syllabus has good balance between theory and application.

1. Excellent 2. Good 3. Average 4. Poor

7. The course/syllabus has made me interested in the subject area

1. Excellent 2. Good 3. Average 4. Poor

8. The course/syllabus of this subject increased my knowledge and perspective in the subject area

1. Excellent 2. Good 3. Average 4. Poor

9. The course/programme of studies carries sufficient number of optional papers.

1. Excellent 2. Good 3. Average 4. Poor

10. The books prescribed/listed as reference materials are relevant, updated and appropriate

1. Excellent 2. Good 3. Average 4. Poor

11. Infrastructural facilities, such as teacher's rooms, class rooms, reading rooms and toilets are available in the College.

1. Excellent 2. Good 3. Average 4. Poor

12. Staff area is available at the college canteen level.

1. Excellent 2. Good 3. Average 4. Poor

13. Tests and examinations are conducted well in time with proper coverage of all units in the syllabus.

1. Excellent 2. Good 3. Average 4. Poor

14. I have the freedom to propose, modify, suggest and incorporate new topics in the syllabus.

1. Excellent 2. Good 3. Average 4. Poor

15. I have the freedom to adopt new techniques/strategies of teaching such as seminar presentations, group discussions and learners' participations.

1. Excellent 2. Good 3. Average 4. Poor

16. I have the freedom to adopt/adapt new techniques/strategies of testing and assessment of

students.

1. Excellent 2. Good 3. Average 4. Poor

17. The environment in the department is conducive to teaching and research.

1. Excellent 2. Good 3. Average 4. Poor

18. The administration is teacher friendly

1. Excellent 2. Good 3. Average 4. Poor.

19. The College provides adequate and smooth support for projects and research facilities.

1. Excellent 2. Good 3. Average 4. Poor

20. The College provides adequate funding and support to faculty members for upgrading their skills and qualifications.

1. Excellent 2. Good 3. Average 4. Poor

21. Provisions for professional development are non-discriminatory and fair.

1. Excellent 2. Good 3. Average 4. Poor

22. Any Other Comments or Suggestions

Signature

HINDU COLLEGE:: GUNTUR

Employers' Feedback

Dear Employer,

Some of the graduates of our Department/College are already working in your organization. We are thankful to you for providing them employment with your prestigious Company/Organization.

We shall very much appreciate and be grateful to you if you can spare some of your valuable time to give your feedback. It will help us to improve the Institute further and give you better employees in future. Please share your feedback to *principalhinducollegeguntur@gmail.com* or handover the hard copy to the authorities.

1. General communication skills

1. Excellent 2. Good 3. Average 4. Poor

2. Developing practical solutions to work place problems

1. Excellent 2. Good 3. Average 4. Poor

3. Working as part of a team

1. Excellent 2. Good 3. Average 4. Poor

4. Creative in response to workplace challenges

1. Excellent 2. Good 3. Average 4. Poor

5. Their planning and organization skills

1. Excellent 2. Good 3. Average 4. Poor

6. Self-motivated and taking on appropriate level of responsibility

1. Excellent 2. Good 3. Average 4. Poor

7. Open to new ideas and learning new techniques

1. Excellent 2. Good 3. Average 4. Poor

8. Using technology and workplace equipment

1. Excellent 2. Good 3. Average 4. Poor

9. Ability to contribute to the goal of the organization

1. Excellent 2. Good 3. Average 4. Poor

10. Technical knowledge/skill

1. Excellent 2. Good 3. Average 4. Poor

11. Ability to manage/leadership qualities

1. Excellent 2. Good 3. Average 4. Poor

12. Innovativeness, creativity

1. Excellent 2. Good 3. Average 4. Poor

13. Relationship with seniors/peers/subordinates

1. Excellent 2. Good 3. Average 4. Poor

14. Involvement in social activities

1. Excellent 2. Good 3. Average 4. Poor

15. Ability to take up extra responsibility

1. Excellent 2. Good 3. Average 4. Poor

16. Obligation to work beyond schedule if required

1. Excellent 2. Good 3. Average 4. Poor

17. On a scale of 1 to 10 how do you rate your overall satisfaction with HC students and the curriculum?

1. Excellent 2. Good 3. Average 4. Poor

18. If you were dissatisfied with any aspect, please comment further

19. How could our programs be improved? What specific comments do you have regarding the curriculum?

Name of the Respondent :

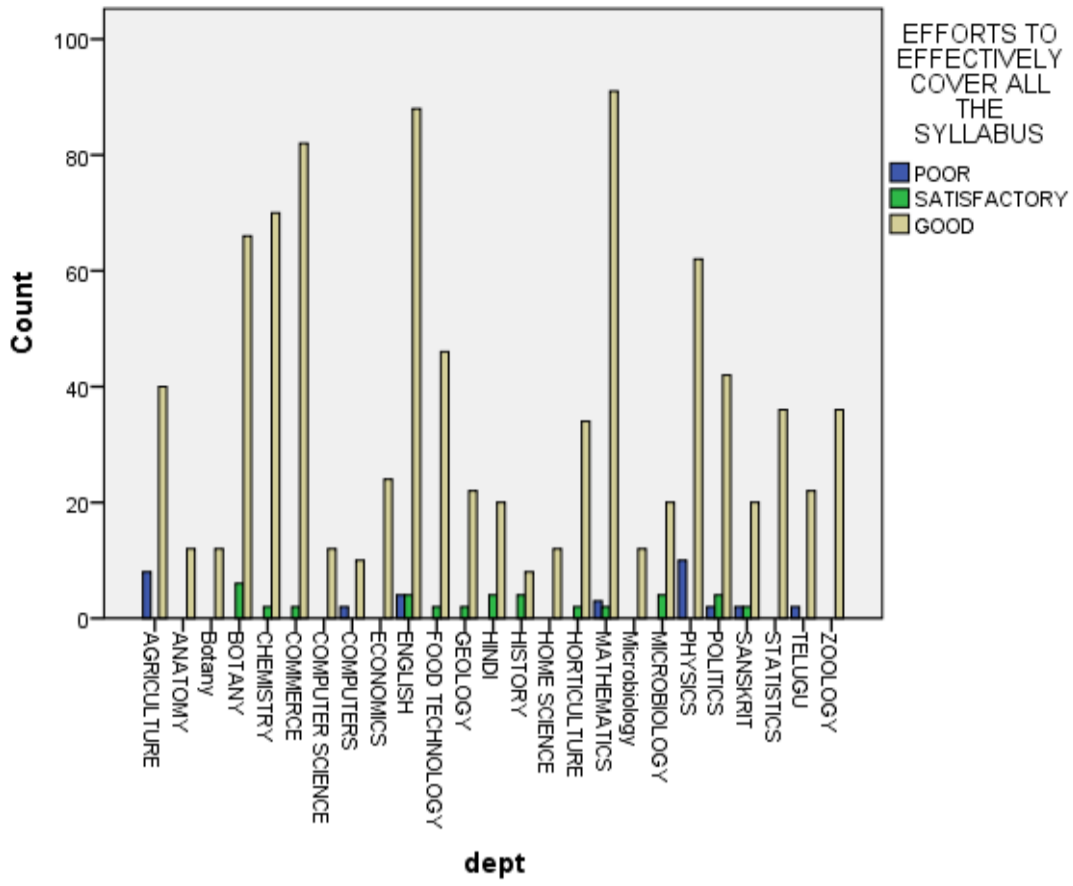
Designation :

Organization :

EFFORTS TO EFFECTIVELY COVER ALL THE SYLLABUS

	EFFORTS TO EFFECTIVELY COVER ALL THE SYLLABUS			Total
	POOR	SATISFACTORY	GOOD	
AGRICULTURE	8	0	40	48
	0.8%	0.0%	4.1%	4.9%
ANATOMY	0	0	12	12
	0.0%	0.0%	1.2%	1.2%
Botany	0	0	12	12
	0.0%	0.0%	1.2%	1.2%
BOTANY	0	6	66	72
	0.0%	0.6%	6.8%	7.4%
CHEMISTRY	0	2	70	72
	0.0%	0.2%	7.2%	7.4%
COMMERCE	0	2	82	84
	0.0%	0.2%	8.4%	8.6%
COMPUTER SCIENCE	0	0	12	12
	0.0%	0.0%	1.2%	1.2%
COMPUTERS	2	0	10	12
	0.2%	0.0%	1.0%	1.2%
ECONOMICS	0	0	24	24
	0.0%	0.0%	2.5%	2.5%
ENGLISH	4	4	88	96
	0.4%	0.4%	9.1%	9.9%
FOOD TECHNOLOGY	0	2	46	48
	0.0%	0.2%	4.7%	4.9%
GEOLOGY	0	2	22	24
	0.0%	0.2%	2.3%	2.5%
HINDI	0	4	20	24
	0.0%	0.4%	2.1%	2.5%
HISTORY	0	4	8	12
	0.0%	0.4%	0.8%	1.2%
HOME SCIENCE	0	0	12	12
	0.0%	0.0%	1.2%	1.2%
HORTICULTURE	0	2	34	36
	0.0%	0.2%	3.5%	3.7%
MATHEMATICS	3	2	91	96
	0.3%	0.2%	9.4%	9.9%
Microbiology	0	0	12	12
	0.0%	0.0%	1.2%	1.2%
MICROBIOLOGY	0	4	20	24
	0.0%	0.4%	2.1%	2.5%
PHYSICS	10	0	62	72
	1.0%	0.0%	6.4%	7.4%
POLITICS	2	4	42	48
	0.2%	0.4%	4.3%	4.9%
SANSKRIT	2	2	20	24
	0.2%	0.2%	2.1%	2.5%
STATISTICS	0	0	36	36
	0.0%	0.0%	3.7%	3.7%
TELUGU	2	0	22	24
	0.2%	0.0%	2.3%	2.5%
ZOOLOGY	0	0	36	36
	0.0%	0.0%	3.7%	3.7%
Total	33	40	899	972
	3.4%	4.1%	92.5%	100.0%

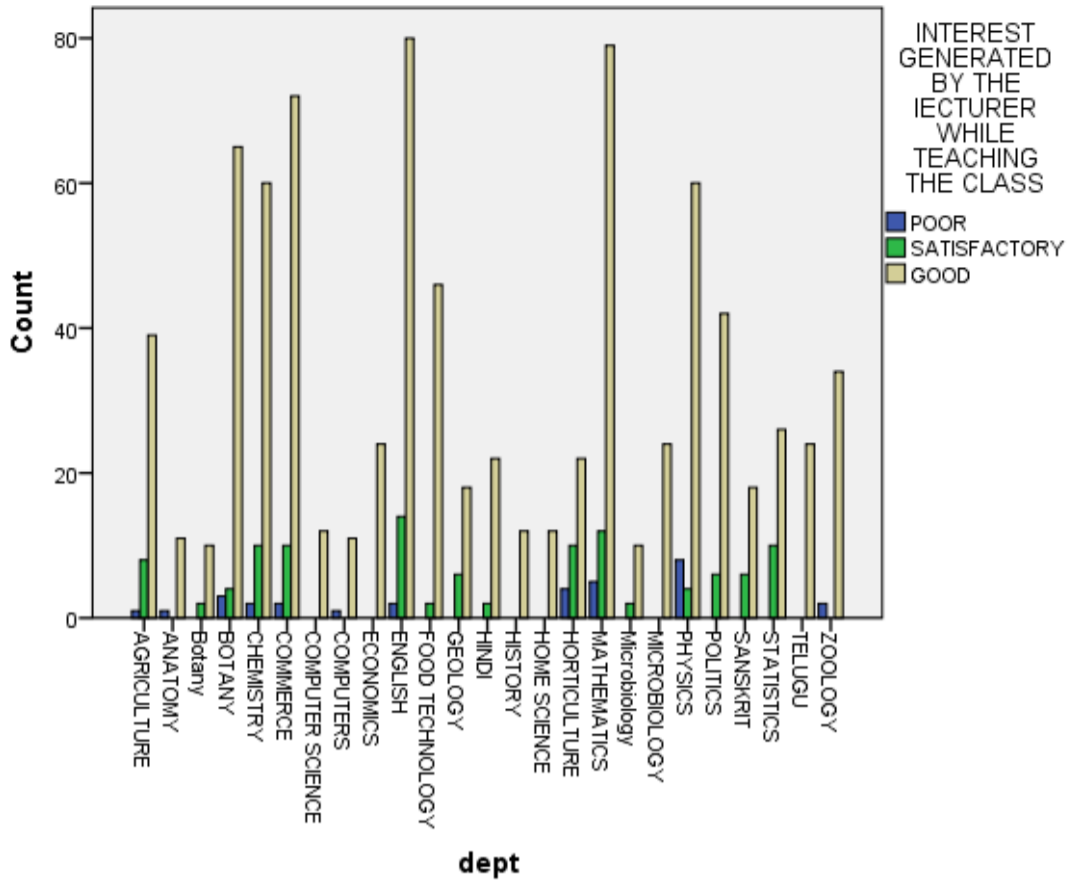
Bar Chart



INTEREST GENERATED BY THE LECTURER WHILE TEACHING THE CLASS

	INTEREST GENERATED BY THE LECTURER WHILE TEACHING THE CLASS			Total
	POOR	SATISFACTORY	GOOD	
AGRICULTURE	1	8	39	48
	0.1%	0.8%	4.0%	4.9%
ANATOMY	1	0	11	12
	0.1%	0.0%	1.1%	1.2%
Botany	0	2	10	12
	0.0%	0.2%	1.0%	1.2%
BOTANY	3	4	65	72
	0.3%	0.4%	6.7%	7.4%
CHEMISTRY	2	10	60	72
	0.2%	1.0%	6.2%	7.4%
COMMERCE	2	10	72	84
	0.2%	1.0%	7.4%	8.6%
COMPUTER SCIENCE	0	0	12	12
	0.0%	0.0%	1.2%	1.2%
COMPUTERS	1	0	11	12
	0.1%	0.0%	1.1%	1.2%
ECONOMICS	0	0	24	24
	0.0%	0.0%	2.5%	2.5%
ENGLISH	2	14	80	96
	0.2%	1.4%	8.2%	9.9%
FOOD TECHNOLOGY	0	2	46	48
	0.0%	0.2%	4.7%	4.9%
GEOLOGY	0	6	18	24
	0.0%	0.6%	1.9%	2.5%
HINDI	0	2	22	24
	0.0%	0.2%	2.3%	2.5%
HISTORY	0	0	12	12
	0.0%	0.0%	1.2%	1.2%
HOME SCIENCE	0	0	12	12
	0.0%	0.0%	1.2%	1.2%
HORTICULTURE	4	10	22	36
	0.4%	1.0%	2.3%	3.7%
MATHEMATICS	5	12	79	96
	0.5%	1.2%	8.1%	9.9%
Microbiology	0	2	10	12
	0.0%	0.2%	1.0%	1.2%
MICROBIOLOGY	0	0	24	24
	0.0%	0.0%	2.5%	2.5%
PHYSICS	8	4	60	72
	0.8%	0.4%	6.2%	7.4%
POLITICS	0	6	42	48
	0.0%	0.6%	4.3%	4.9%
SANSKRIT	0	6	18	24
	0.0%	0.6%	1.9%	2.5%
STATISTICS	0	10	26	36
	0.0%	1.0%	2.7%	3.7%
TELUGU	0	0	24	24
	0.0%	0.0%	2.5%	2.5%
ZOOLOGY	2	0	34	36
	0.2%	0.0%	3.5%	3.7%
Total	31	108	833	972
	3.2%	11.1%	85.7%	100.0%

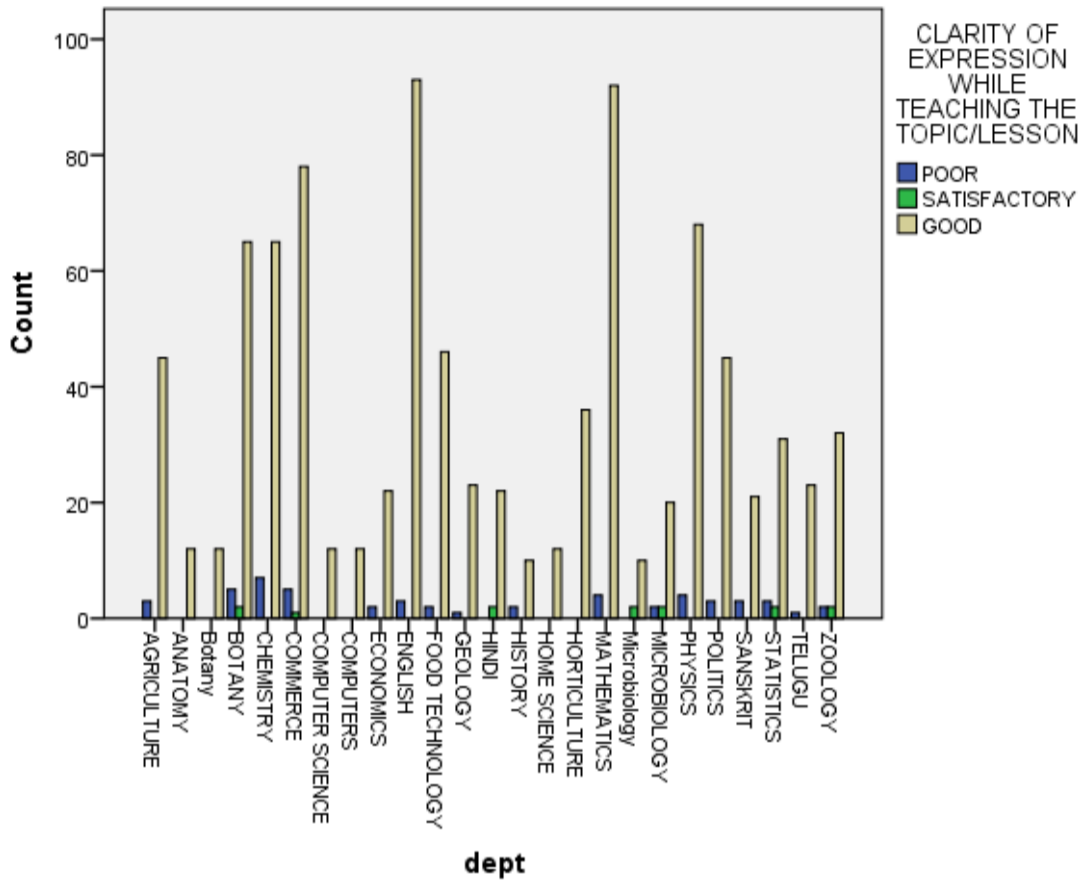
Bar Chart



CLARITY OF EXPRESSION WHILE TEACHING THE
TOPIC/LESSON

	CLARITY OF EXPRESSION WHILE TEACHING THE TOPIC/LESSON			Total
	POOR	SATISFACTORY	GOOD	
AGRICULTURE	3	0	45	48
	0.30%	0.00%	4.60%	4.90%
ANATOMY	0	0	12	12
	0.00%	0.00%	1.20%	1.20%
Botany	0	0	12	12
	0.00%	0.00%	1.20%	1.20%
BOTANY	5	2	65	72
	0.50%	0.20%	6.70%	7.40%
CHEMISTRY	7	0	65	72
	0.70%	0.00%	6.70%	7.40%
COMMERCE	5	1	78	84
	0.50%	0.10%	8.00%	8.60%
COMPUTER SCIENCE	0	0	12	12
	0.00%	0.00%	1.20%	1.20%
COMPUTERS	0	0	12	12
	0.00%	0.00%	1.20%	1.20%
ECONOMICS	2	0	22	24
	0.20%	0.00%	2.30%	2.50%
ENGLISH	3	0	93	96
	0.30%	0.00%	9.60%	9.90%
FOOD TECHNOLOGY	2	0	46	48
	0.20%	0.00%	4.70%	4.90%
GEOLOGY	1	0	23	24
	0.10%	0.00%	2.40%	2.50%
HINDI	0	2	22	24
	0.00%	0.20%	2.30%	2.50%
HISTORY	2	0	10	12
	0.20%	0.00%	1.00%	1.20%
HOME SCIENCE	0	0	12	12
	0.00%	0.00%	1.20%	1.20%
HORTICULTURE	0	0	36	36
	0.00%	0.00%	3.70%	3.70%
MATHEMATICS	4	0	92	96
	0.40%	0.00%	9.50%	9.90%
Microbiology	0	2	10	12
	0.00%	0.20%	1.00%	1.20%
MICROBIOLOGY	2	2	20	24
	0.20%	0.20%	2.10%	2.50%
PHYSICS	4	0	68	72
	0.40%	0.00%	7.00%	7.40%
POLITICS	3	0	45	48
	0.30%	0.00%	4.60%	4.90%
SANSKRIT	3	0	21	24
	0.30%	0.00%	2.20%	2.50%
STATISTICS	3	2	31	36
	0.30%	0.20%	3.20%	3.70%
TELUGU	1	0	23	24
	0.10%	0.00%	2.40%	2.50%
ZOOLOGY	2	2	32	36
	0.20%	0.20%	3.30%	3.70%
total	52	13	907	972
	5.30%	1.30%	93.30%	100.00%

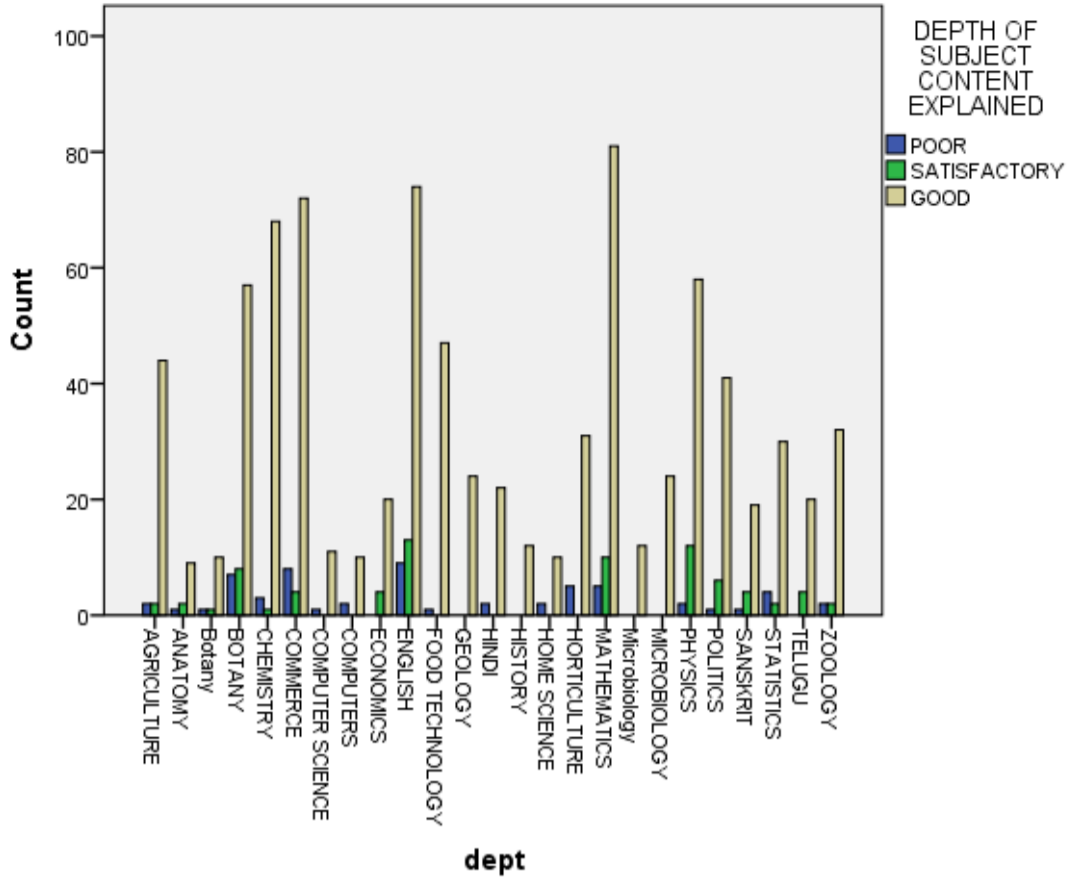
Bar Chart



DEPTH OF SUBJECT CONTENT EXPLAINED

	DEPTH OF SUBJECT CONTENT EXPLAINED			Total
	POOR	SATISFACTORY	GOOD	
AGRICULTURE	2	2	44	48
	0.2%	0.2%	4.5%	4.9%
ANATOMY	1	2	9	12
	0.1%	0.2%	0.9%	1.2%
Botany	1	1	10	12
	0.1%	0.1%	1.0%	1.2%
BOTANY	7	8	57	72
	0.7%	0.8%	5.9%	7.4%
CHEMISTRY	3	1	68	72
	0.3%	0.1%	7.0%	7.4%
COMMERCE	8	4	72	84
	0.8%	0.4%	7.4%	8.6%
COMPUTER SCIENCE	1	0	11	12
	0.1%	0.0%	1.1%	1.2%
COMPUTERS	2	0	10	12
	0.2%	0.0%	1.0%	1.2%
ECONOMICS	0	4	20	24
	0.0%	0.4%	2.1%	2.5%
ENGLISH	9	13	74	96
	0.9%	1.3%	7.6%	9.9%
FOOD TECHNOLOGY	1	0	47	48
	0.1%	0.0%	4.8%	4.9%
GEOLOGY	0	0	24	24
	0.0%	0.0%	2.5%	2.5%
HINDI	2	0	22	24
	0.2%	0.0%	2.3%	2.5%
HISTORY	0	0	12	12
	0.0%	0.0%	1.2%	1.2%
HOME SCIENCE	2	0	10	12
	0.2%	0.0%	1.0%	1.2%
HORTICULTURE	5	0	31	36
	0.5%	0.0%	3.2%	3.7%
MATHEMATICS	5	10	81	96
	0.5%	1.0%	8.3%	9.9%
Microbiology	0	0	12	12
	0.0%	0.0%	1.2%	1.2%
MICROBIOLOGY	0	0	24	24
	0.0%	0.0%	2.5%	2.5%
PHYSICS	2	12	58	72
	0.2%	1.2%	6.0%	7.4%
POLITICS	1	6	41	48
	0.1%	0.6%	4.2%	4.9%
SANSKRIT	1	4	19	24
	0.1%	0.4%	2.0%	2.5%
STATISTICS	4	2	30	36
	0.4%	0.2%	3.1%	3.7%
TELUGU	0	4	20	24
	0.0%	0.4%	2.1%	2.5%
ZOOLOGY	2	2	32	36
	0.2%	0.2%	3.3%	3.7%
	59	75	838	972
Total	6.1%	7.7%	86.2%	100.0%

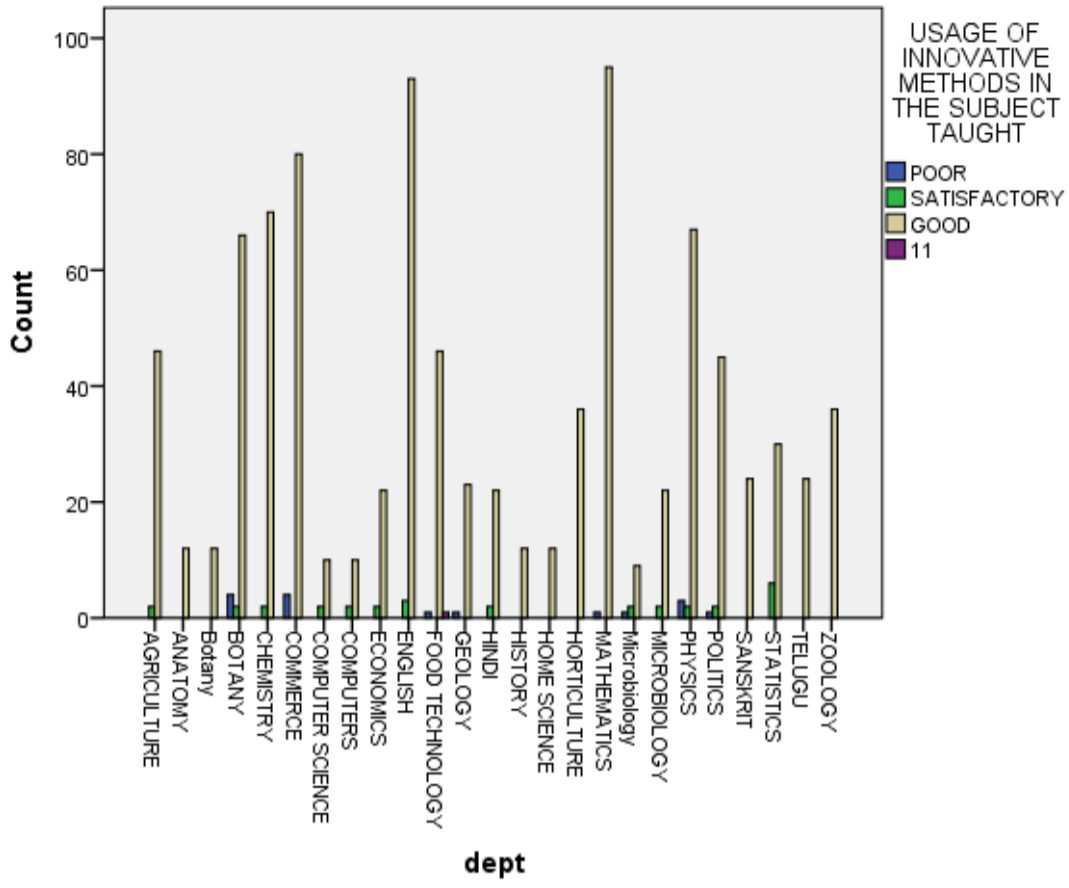
Bar Chart



**USAGE OF INNOVATIVE METHODS IN THE SUBJECT
TAUGHT**

	USAGE OF INNOVATIVE METHODS IN THE SUBJECT TAUGHT				Total
	POOR	SATISFACTORY	GOOD	11	
AGRICULTURE	0	2	46	0	48
	0.0%	0.2%	4.7%	0.0%	4.9%
ANATOMY	0	0	12	0	12
	0.0%	0.0%	1.2%	0.0%	1.2%
Botany	0	0	12	0	12
	0.0%	0.0%	1.2%	0.0%	1.2%
BOTANY	4	2	66	0	72
	0.4%	0.2%	6.8%	0.0%	7.4%
CHEMISTRY	0	2	70	0	72
	0.0%	0.2%	7.2%	0.0%	7.4%
COMMERCE	4	0	80	0	84
	0.4%	0.0%	8.2%	0.0%	8.6%
COMPUTER SCIENCE	0	2	10	0	12
	0.0%	0.2%	1.0%	0.0%	1.2%
COMPUTERS	0	2	10	0	12
	0.0%	0.2%	1.0%	0.0%	1.2%
ECONOMICS	0	2	22	0	24
	0.0%	0.2%	2.3%	0.0%	2.5%
ENGLISH	0	3	93	0	96
	0.0%	0.3%	9.6%	0.0%	9.9%
FOOD TECHNOLOGY	1	0	46	1	48
	0.1%	0.0%	4.7%	0.1%	4.9%
GEOLOGY	1	0	23	0	24
	0.1%	0.0%	2.4%	0.0%	2.5%
HINDI	0	2	22	0	24
	0.0%	0.2%	2.3%	0.0%	2.5%
HISTORY	0	0	12	0	12
	0.0%	0.0%	1.2%	0.0%	1.2%
HOME SCIENCE	0	0	12	0	12
	0.0%	0.0%	1.2%	0.0%	1.2%
HORTICULTURE	0	0	36	0	36
	0.0%	0.0%	3.7%	0.0%	3.7%
MATHEMATICS	1	0	95	0	96
	0.1%	0.0%	9.8%	0.0%	9.9%
Microbiology	1	2	9	0	12
	0.1%	0.2%	0.9%	0.0%	1.2%
MICROBIOLOGY	0	2	22	0	24
	0.0%	0.2%	2.3%	0.0%	2.5%
PHYSICS	3	2	67	0	72
	0.3%	0.2%	6.9%	0.0%	7.4%
POLITICS	1	2	45	0	48
	0.1%	0.2%	4.6%	0.0%	4.9%
SANSKRIT	0	0	24	0	24
	0.0%	0.0%	2.5%	0.0%	2.5%
STATISTICS	0	6	30	0	36
	0.0%	0.6%	3.1%	0.0%	3.7%
TELUGU	0	0	24	0	24
	0.0%	0.0%	2.5%	0.0%	2.5%
ZOOLOGY	0	0	36	0	36
	0.0%	0.0%	3.7%	0.0%	3.7%
Total	16	31	924	1	972
	1.6%	3.2%	95.1%	0.1%	100.0%

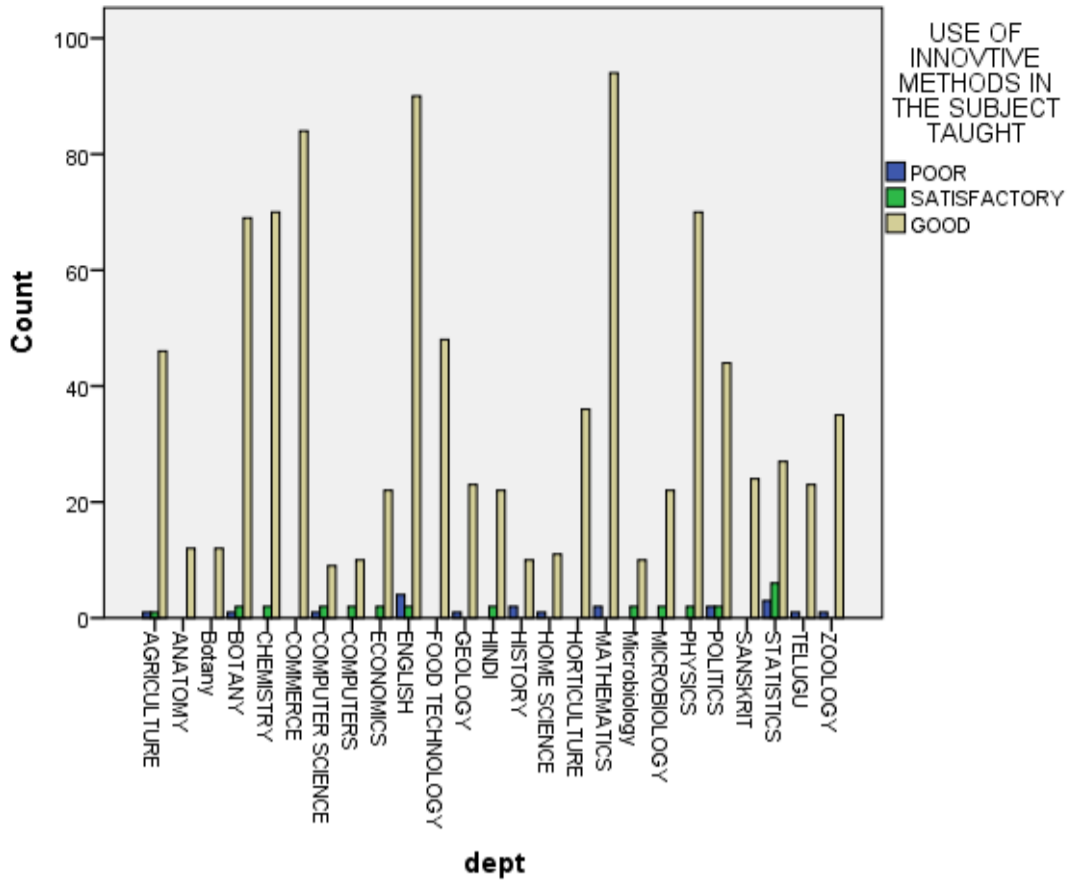
Bar Chart



USE OF INNOVTIVE METHODS IN THE SUBJECT TAUGHT

	USE OF INNOVTIVE METHODS IN THE SUBJECT TAUGHT			Total
	POOR	SATISFACTORY	GOOD	
AGRICULTURE	1	1	46	48
	0.1%	0.1%	4.7%	4.9%
ANATOMY	0	0	12	12
	0.0%	0.0%	1.2%	1.2%
Botany	0	0	12	12
	0.0%	0.0%	1.2%	1.2%
BOTANY	1	2	69	72
	0.1%	0.2%	7.1%	7.4%
CHEMISTRY	0	2	70	72
	0.0%	0.2%	7.2%	7.4%
COMMERCE	0	0	84	84
	0.0%	0.0%	8.6%	8.6%
COMPUTER SCIENCE	1	2	9	12
	0.1%	0.2%	0.9%	1.2%
COMPUTERS	0	2	10	12
	0.0%	0.2%	1.0%	1.2%
ECONOMICS	0	2	22	24
	0.0%	0.2%	2.3%	2.5%
ENGLISH	4	2	90	96
	0.4%	0.2%	9.3%	9.9%
FOOD TECHNOLOGY	0	0	48	48
	0.0%	0.0%	4.9%	4.9%
GEOLOGY	1	0	23	24
	0.1%	0.0%	2.4%	2.5%
HINDI	0	2	22	24
	0.0%	0.2%	2.3%	2.5%
HISTORY	2	0	10	12
	0.2%	0.0%	1.0%	1.2%
HOME SCIENCE	1	0	11	12
	0.1%	0.0%	1.1%	1.2%
HORTICULTURE	0	0	36	36
	0.0%	0.0%	3.7%	3.7%
MATHEMATICS	2	0	94	96
	0.2%	0.0%	9.7%	9.9%
Microbiology	0	2	10	12
	0.0%	0.2%	1.0%	1.2%
MICROBIOLOGY	0	2	22	24
	0.0%	0.2%	2.3%	2.5%
PHYSICS	0	2	70	72
	0.0%	0.2%	7.2%	7.4%
POLITICS	2	2	44	48
	0.2%	0.2%	4.5%	4.9%
SANSKRIT	0	0	24	24
	0.0%	0.0%	2.5%	2.5%
STATISTICS	3	6	27	36
	0.3%	0.6%	2.8%	3.7%
TELUGU	1	0	23	24
	0.1%	0.0%	2.4%	2.5%
ZOOLOGY	1	0	35	36
	0.1%	0.0%	3.6%	3.7%
Total	20	29	923	972
	2.1%	3.0%	95.0%	100.0%

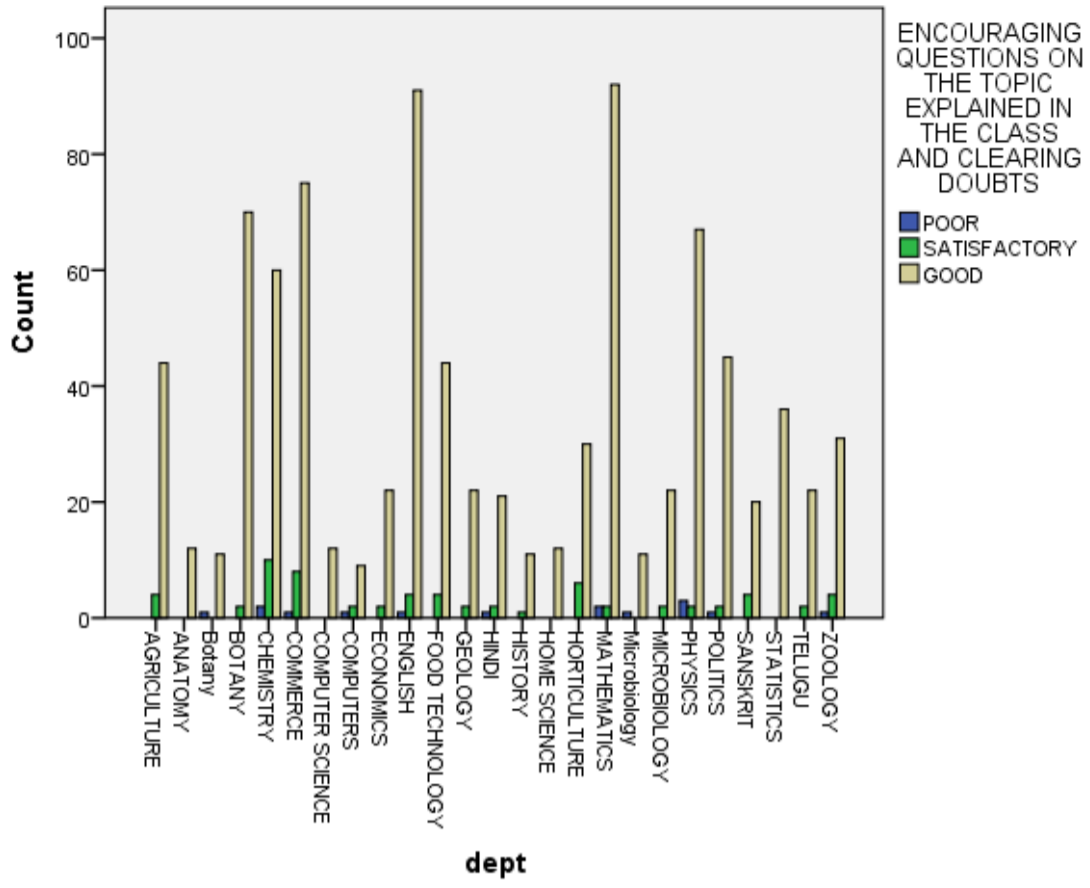
Bar Chart



**ENCOURAGING QUESTIONS ON THE TOPIC EXPLAINED IN THE CLASS
AND CLEARING DOUBTS**

ENCOURAGING QUESTIONS ON THE TOPIC EXPLAINED IN THE CLASS AND CLEARING DOUBTS				Total
	POOR	SATISFACTORY	GOOD	
AGRICULTURE	0	4	44	48
	0.0%	0.4%	4.5%	4.9%
ANATOMY	0	0	12	12
	0.0%	0.0%	1.2%	1.2%
Botany	1	0	11	12
	0.1%	0.0%	1.1%	1.2%
BOTANY	0	2	70	72
	0.0%	0.2%	7.2%	7.4%
CHEMISTRY	2	10	60	72
	0.2%	1.0%	6.2%	7.4%
COMMERCE	1	8	75	84
	0.1%	0.8%	7.7%	8.6%
COMPUTER SCIENCE	0	0	12	12
	0.0%	0.0%	1.2%	1.2%
COMPUTERS	1	2	9	12
	0.1%	0.2%	0.9%	1.2%
ECONOMICS	0	2	22	24
	0.0%	0.2%	2.3%	2.5%
ENGLISH	1	4	91	96
	0.1%	0.4%	9.4%	9.9%
FOOD TECHNOLOGY	0	4	44	48
	0.0%	0.4%	4.5%	4.9%
GEOLOGY	0	2	22	24
	0.0%	0.2%	2.3%	2.5%
HINDI	1	2	21	24
	0.1%	0.2%	2.2%	2.5%
HISTORY	0	1	11	12
	0.0%	0.1%	1.1%	1.2%
HOME SCIENCE	0	0	12	12
	0.0%	0.0%	1.2%	1.2%
HORTICULTURE	0	6	30	36
	0.0%	0.6%	3.1%	3.7%
MATHEMATICS	2	2	92	96
	0.2%	0.2%	9.5%	9.9%
Microbiology	1	0	11	12
	0.1%	0.0%	1.1%	1.2%
MICROBIOLOGY	0	2	22	24
	0.0%	0.2%	2.3%	2.5%
PHYSICS	3	2	67	72
	0.3%	0.2%	6.9%	7.4%
POLITICS	1	2	45	48
	0.1%	0.2%	4.6%	4.9%
SANSKRIT	0	4	20	24
	0.0%	0.4%	2.1%	2.5%
STATISTICS	0	0	36	36
	0.0%	0.0%	3.7%	3.7%
TELUGU	0	2	22	24
	0.0%	0.2%	2.3%	2.5%
ZOOLOGY	1	4	31	36
	0.1%	0.4%	3.2%	3.7%
Total	15	65	892	972
	1.5%	6.7%	91.8%	100.0%

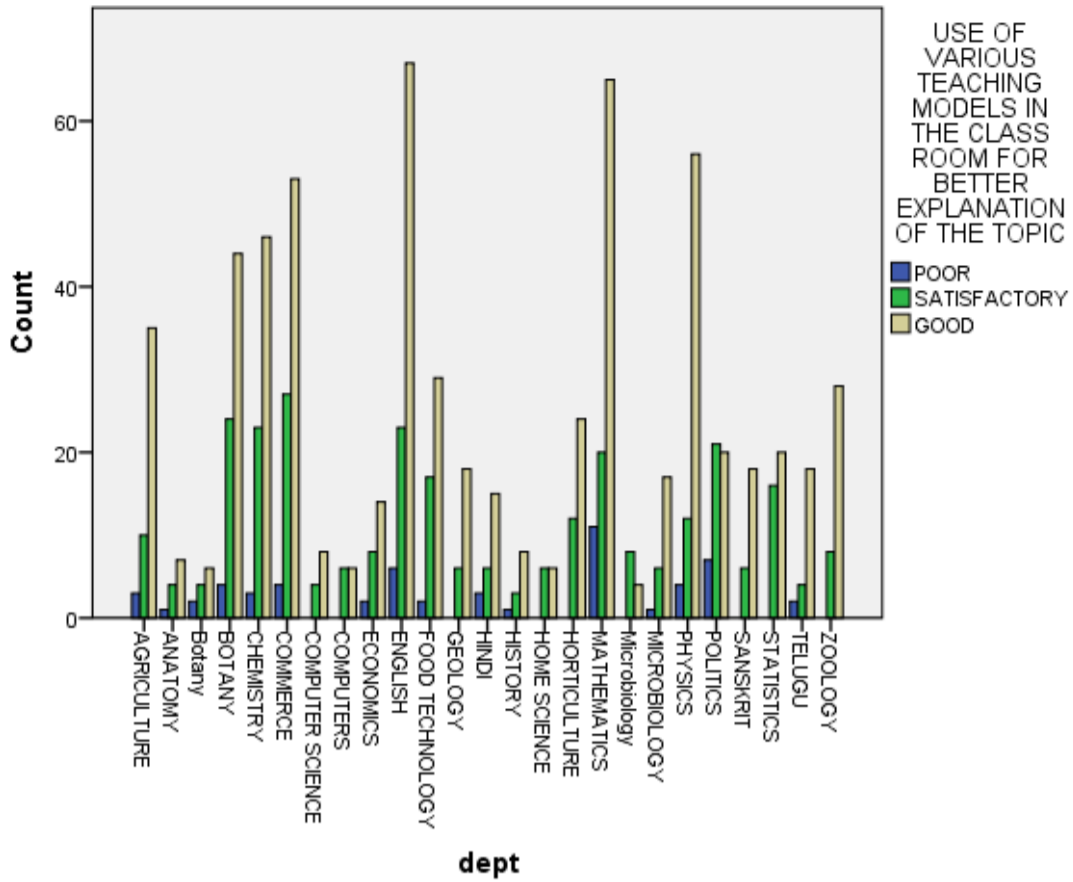
Bar Chart



**USE OF VARIOUS TEACHING MODELS IN THE CLASS ROOM FOR
BETTER EXPLANATION OF THE TOPIC**

USE OF VARIOUS TEACHING MODELS IN THE CLASS ROOM FOR BETTER EXPLANATION OF THE TOPIC				Total
	POOR	SATISFACTORY	GOOD	
AGRICULTURE	3	10	35	48
	0.3%	1.0%	3.6%	4.9%
ANATOMY	1	4	7	12
	0.1%	0.4%	0.7%	1.2%
Botany	2	4	6	12
	0.2%	0.4%	0.6%	1.2%
BOTANY	4	24	44	72
	0.4%	2.5%	4.5%	7.4%
CHEMISTRY	3	23	46	72
	0.3%	2.4%	4.7%	7.4%
COMMERCE	4	27	53	84
	0.4%	2.8%	5.5%	8.6%
COMPUTER SCIENCE	0	4	8	12
	0.0%	0.4%	0.8%	1.2%
COMPUTERS	0	6	6	12
	0.0%	0.6%	0.6%	1.2%
ECONOMICS	2	8	14	24
	0.2%	0.8%	1.4%	2.5%
ENGLISH	6	23	67	96
	0.6%	2.4%	6.9%	9.9%
FOOD TECHNOLOGY	2	17	29	48
	0.2%	1.7%	3.0%	4.9%
GEOLOGY	0	6	18	24
	0.0%	0.6%	1.9%	2.5%
HINDI	3	6	15	24
	0.3%	0.6%	1.5%	2.5%
HISTORY	1	3	8	12
	0.1%	0.3%	0.8%	1.2%
HOME SCIENCE	0	6	6	12
	0.0%	0.6%	0.6%	1.2%
HORTICULTURE	0	12	24	36
	0.0%	1.2%	2.5%	3.7%
MATHEMATICS	11	20	65	96
	1.1%	2.1%	6.7%	9.9%
Microbiology	0	8	4	12
	0.0%	0.8%	0.4%	1.2%
MICROBIOLOGY	1	6	17	24
	0.1%	0.6%	1.7%	2.5%
PHYSICS	4	12	56	72
	0.4%	1.2%	5.8%	7.4%
POLITICS	7	21	20	48
	0.7%	2.2%	2.1%	4.9%
SANSKRIT	0	6	18	24
	0.0%	0.6%	1.9%	2.5%
STATISTICS	0	16	20	36
	0.0%	1.6%	2.1%	3.7%
TELUGU	2	4	18	24
	0.2%	0.4%	1.9%	2.5%
ZOOLOGY	0	8	28	36
	0.0%	0.8%	2.9%	3.7%
Total	56	284	632	972
	5.8%	29.2%	65.0%	100.0%

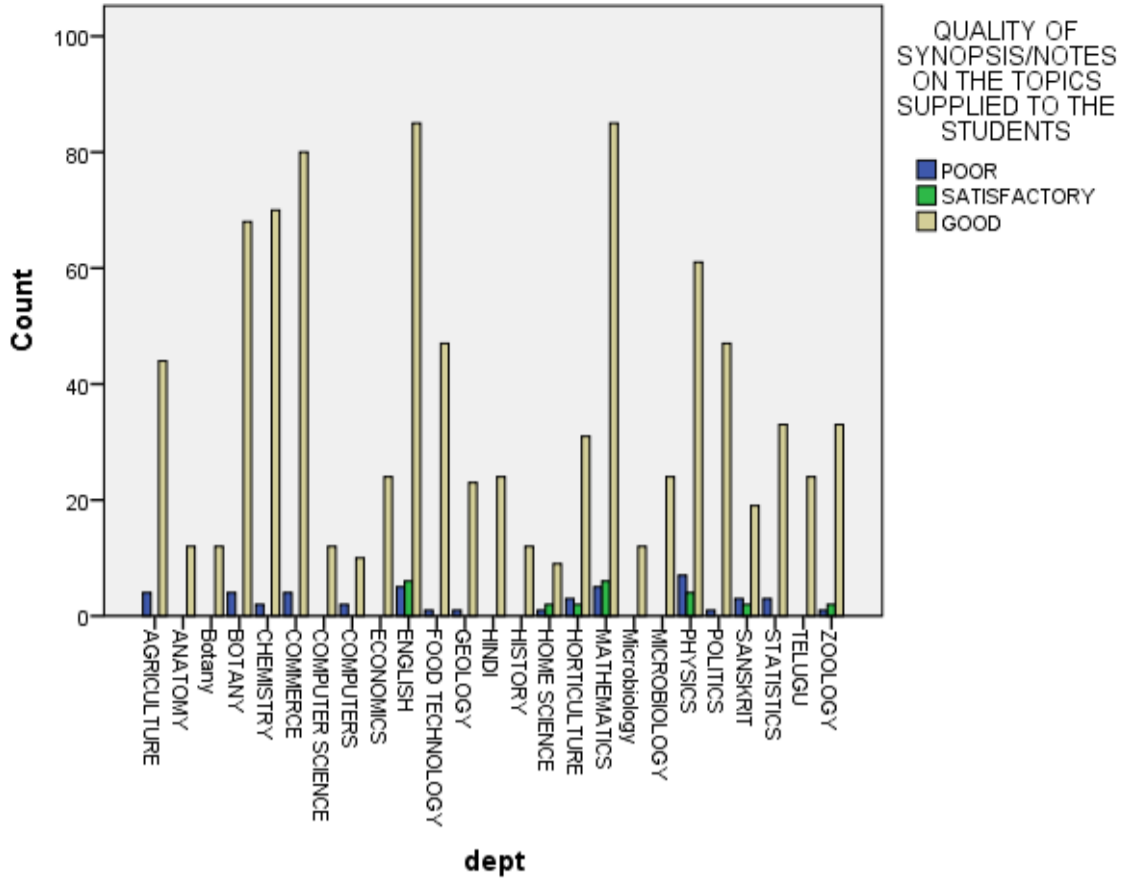
Bar Chart



QUALITY OF SYNOPSIS/NOTES ON THE TOPICS SUPPLIED TO THE STUDENTS

	QUALITY OF SYNOPSIS/NOTES ON THE TOPICS SUPPLIED TO THE STUDENTS			Total
	POOR	SATISFACTORY	GOOD	
AGRICULTURE	4	0	44	48
	0.4%	0.0%	4.5%	4.9%
ANATOMY	0	0	12	12
	0.0%	0.0%	1.2%	1.2%
Botany	0	0	12	12
	0.0%	0.0%	1.2%	1.2%
BOTANY	4	0	68	72
	0.4%	0.0%	7.0%	7.4%
CHEMISTRY	2	0	70	72
	0.2%	0.0%	7.2%	7.4%
COMMERCE	4	0	80	84
	0.4%	0.0%	8.2%	8.6%
COMPUTER SCIENCE	0	0	12	12
	0.0%	0.0%	1.2%	1.2%
COMPUTERS	2	0	10	12
	0.2%	0.0%	1.0%	1.2%
ECONOMICS	0	0	24	24
	0.0%	0.0%	2.5%	2.5%
ENGLISH	5	6	85	96
	0.5%	0.6%	8.7%	9.9%
FOOD TECHNOLOGY	1	0	47	48
	0.1%	0.0%	4.8%	4.9%
GEOLOGY	1	0	23	24
	0.1%	0.0%	2.4%	2.5%
HINDI	0	0	24	24
	0.0%	0.0%	2.5%	2.5%
HISTORY	0	0	12	12
	0.0%	0.0%	1.2%	1.2%
HOME SCIENCE	1	2	9	12
	0.1%	0.2%	0.9%	1.2%
HORTICULTURE	3	2	31	36
	0.3%	0.2%	3.2%	3.7%
MATHEMATICS	5	6	85	96
	0.5%	0.6%	8.7%	9.9%
Microbiology	0	0	12	12
	0.0%	0.0%	1.2%	1.2%
MICROBIOLOGY	0	0	24	24
	0.0%	0.0%	2.5%	2.5%
PHYSICS	7	4	61	72
	0.7%	0.4%	6.3%	7.4%
POLITICS	1	0	47	48
	0.1%	0.0%	4.8%	4.9%
SANSKRIT	3	2	19	24
	0.3%	0.2%	2.0%	2.5%
STATISTICS	3	0	33	36
	0.3%	0.0%	3.4%	3.7%
TELUGU	0	0	24	24
	0.0%	0.0%	2.5%	2.5%
ZOOLOGY	1	2	33	36
	0.1%	0.2%	3.4%	3.7%
Total	47	24	901	972
	4.8%	2.5%	92.7%	100.0%

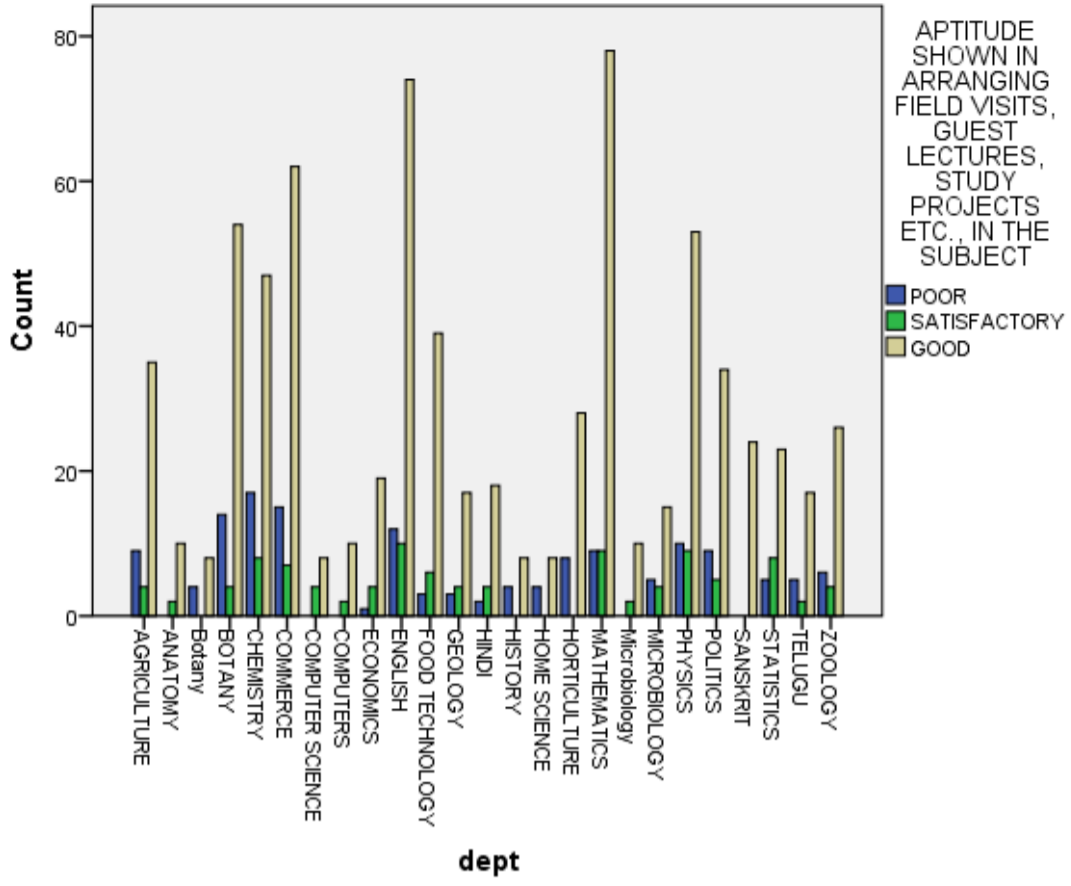
Bar Chart



**APTITUDE SHOWN IN ARRANGING FIELD VISITS, GUEST LECTURES,
STUDY PROJECTS ETC., IN THE SUBJECT**

APTITUDE SHOWN IN ARRANGING FIELD VISITS, GUEST LECTURES, STUDY PROJECTS ETC., IN THE SUBJECT				Total
	POOR	SATISFACTORY	GOOD	
AGRICULTURE	9	4	35	48
	0.9%	0.4%	3.6%	4.9%
ANATOMY	0	2	10	12
	0.0%	0.2%	1.0%	1.2%
Botany	4	0	8	12
	0.4%	0.0%	0.8%	1.2%
BOTANY	14	4	54	72
	1.4%	0.4%	5.6%	7.4%
CHEMISTRY	17	8	47	72
	1.7%	0.8%	4.8%	7.4%
COMMERCE	15	7	62	84
	1.5%	0.7%	6.4%	8.6%
COMPUTER SCIENCE	0	4	8	12
	0.0%	0.4%	0.8%	1.2%
COMPUTERS	0	2	10	12
	0.0%	0.2%	1.0%	1.2%
ECONOMICS	1	4	19	24
	0.1%	0.4%	2.0%	2.5%
ENGLISH	12	10	74	96
	1.2%	1.0%	7.6%	9.9%
FOOD TECHNOLOGY	3	6	39	48
	0.3%	0.6%	4.0%	4.9%
GEOLOGY	3	4	17	24
	0.3%	0.4%	1.7%	2.5%
HINDI	2	4	18	24
	0.2%	0.4%	1.9%	2.5%
HISTORY	4	0	8	12
	0.4%	0.0%	0.8%	1.2%
HOME SCIENCE	4	0	8	12
	0.4%	0.0%	0.8%	1.2%
HORTICULTURE	8	0	28	36
	0.8%	0.0%	2.9%	3.7%
MATHEMATICS	9	9	78	96
	0.9%	0.9%	8.0%	9.9%
Microbiology	0	2	10	12
	0.0%	0.2%	1.0%	1.2%
MICROBIOLOGY	5	4	15	24
	0.5%	0.4%	1.5%	2.5%
PHYSICS	10	9	53	72
	1.0%	0.9%	5.5%	7.4%
POLITICS	9	5	34	48
	0.9%	0.5%	3.5%	4.9%
SANSKRIT	0	0	24	24
	0.0%	0.0%	2.5%	2.5%
STATISTICS	5	8	23	36
	0.5%	0.8%	2.4%	3.7%
TELUGU	5	2	17	24
	0.5%	0.2%	1.7%	2.5%
ZOOLOGY	6	4	26	36
	0.6%	0.4%	2.7%	3.7%
Total	145	102	725	972
	14.9%	10.5%	74.6%	100.0%

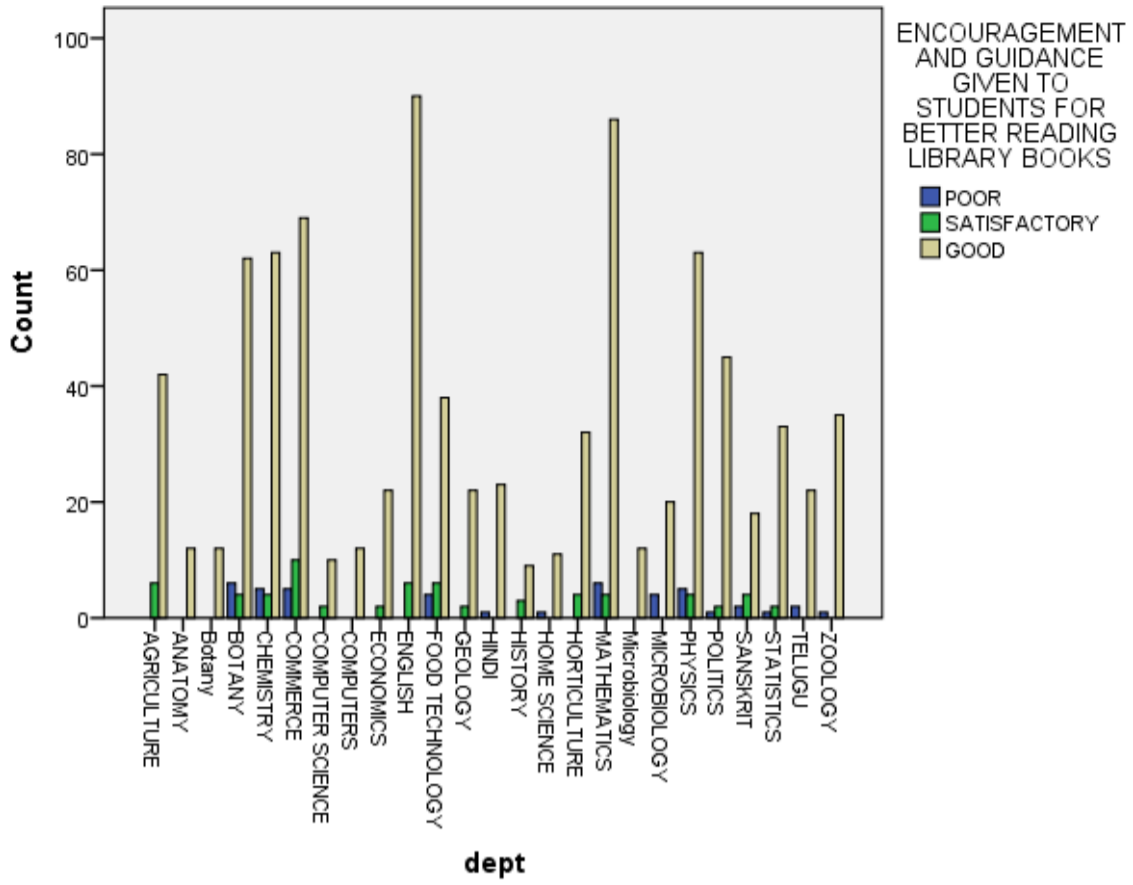
Bar Chart



**ENCOURAGEMENT AND GUIDANCE GIVEN TO STUDENTS FOR BETTER
READING LIBRARY BOOKS**

ENCOURAGEMENT AND GUIDANCE GIVEN TO STUDENTS FOR BETTER READING LIBRARY BOOKS				Total
	POOR	SATISFACTORY	GOOD	
AGRICULTURE	0	6	42	48
	0.0%	0.6%	4.3%	4.9%
ANATOMY	0	0	12	12
	0.0%	0.0%	1.2%	1.2%
Botany	0	0	12	12
	0.0%	0.0%	1.2%	1.2%
BOTANY	6	4	62	72
	0.6%	0.4%	6.4%	7.4%
CHEMISTRY	5	4	63	72
	0.5%	0.4%	6.5%	7.4%
COMMERCE	5	10	69	84
	0.5%	1.0%	7.1%	8.6%
COMPUTER SCIENCE	0	2	10	12
	0.0%	0.2%	1.0%	1.2%
COMPUTERS	0	0	12	12
	0.0%	0.0%	1.2%	1.2%
ECONOMICS	0	2	22	24
	0.0%	0.2%	2.3%	2.5%
ENGLISH	0	6	90	96
	0.0%	0.6%	9.3%	9.9%
FOOD TECHNOLOGY	4	6	38	48
	0.4%	0.6%	3.9%	4.9%
GEOLOGY	0	2	22	24
	0.0%	0.2%	2.3%	2.5%
HINDI	1	0	23	24
	0.1%	0.0%	2.4%	2.5%
HISTORY	0	3	9	12
	0.0%	0.3%	0.9%	1.2%
HOME SCIENCE	1	0	11	12
	0.1%	0.0%	1.1%	1.2%
HORTICULTURE	0	4	32	36
	0.0%	0.4%	3.3%	3.7%
MATHEMATICS	6	4	86	96
	0.6%	0.4%	8.8%	9.9%
Microbiology	0	0	12	12
	0.0%	0.0%	1.2%	1.2%
MICROBIOLOGY	4	0	20	24
	0.4%	0.0%	2.1%	2.5%
PHYSICS	5	4	63	72
	0.5%	0.4%	6.5%	7.4%
POLITICS	1	2	45	48
	0.1%	0.2%	4.6%	4.9%
SANSKRIT	2	4	18	24
	0.2%	0.4%	1.9%	2.5%
STATISTICS	1	2	33	36
	0.1%	0.2%	3.4%	3.7%
TELUGU	2	0	22	24
	0.2%	0.0%	2.3%	2.5%
ZOOLOGY	1	0	35	36
	0.1%	0.0%	3.6%	3.7%
Total	44	65	863	972
	4.5%	6.7%	88.8%	100.0%

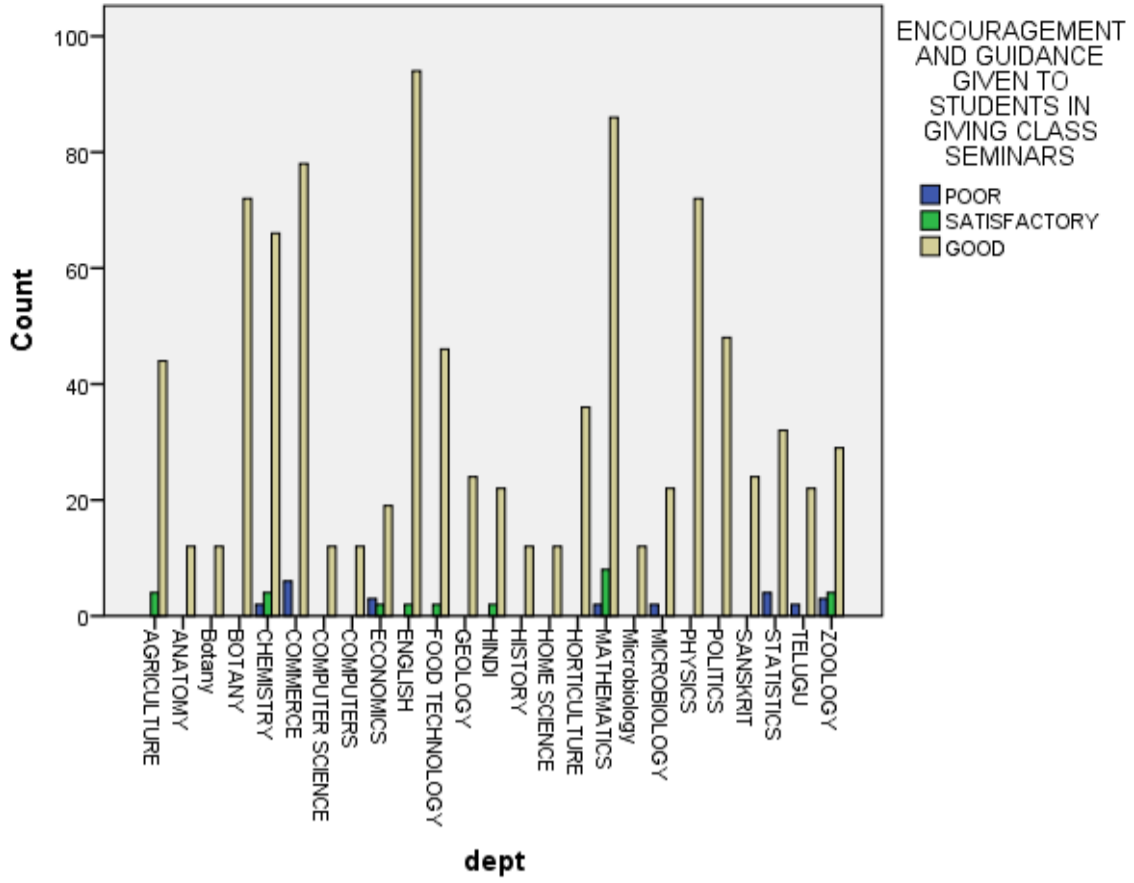
Bar Chart



**ENCOURAGEMENT AND GUIDANCE GIVEN TO STUDENTS IN GIVING
CLASS SEMINARS**

ENCOURAGEMENT AND GUIDANCE GIVEN TO STUDENTS IN GIVING CLASS SEMINARS				Total
	POOR	SATISFACTORY	GOOD	
AGRICULTURE	0	4	44	48
	0.0%	0.4%	4.5%	4.9%
ANATOMY	0	0	12	12
	0.0%	0.0%	1.2%	1.2%
Botany	0	0	12	12
	0.0%	0.0%	1.2%	1.2%
BOTANY	0	0	72	72
	0.0%	0.0%	7.4%	7.4%
CHEMISTRY	2	4	66	72
	0.2%	0.4%	6.8%	7.4%
COMMERCE	6	0	78	84
	0.6%	0.0%	8.0%	8.6%
COMPUTER SCIENCE	0	0	12	12
	0.0%	0.0%	1.2%	1.2%
COMPUTERS	0	0	12	12
	0.0%	0.0%	1.2%	1.2%
ECONOMICS	3	2	19	24
	0.3%	0.2%	2.0%	2.5%
ENGLISH	0	2	94	96
	0.0%	0.2%	9.7%	9.9%
FOOD TECHNOLOGY	0	2	46	48
	0.0%	0.2%	4.7%	4.9%
GEOLOGY	0	0	24	24
	0.0%	0.0%	2.5%	2.5%
HINDI	0	2	22	24
	0.0%	0.2%	2.3%	2.5%
HISTORY	0	0	12	12
	0.0%	0.0%	1.2%	1.2%
HOME SCIENCE	0	0	12	12
	0.0%	0.0%	1.2%	1.2%
HORTICULTURE	0	0	36	36
	0.0%	0.0%	3.7%	3.7%
MATHEMATICS	2	8	86	96
	0.2%	0.8%	8.8%	9.9%
Microbiology	0	0	12	12
	0.0%	0.0%	1.2%	1.2%
MICROBIOLOGY	2	0	22	24
	0.2%	0.0%	2.3%	2.5%
PHYSICS	0	0	72	72
	0.0%	0.0%	7.4%	7.4%
POLITICS	0	0	48	48
	0.0%	0.0%	4.9%	4.9%
SANSKRIT	0	0	24	24
	0.0%	0.0%	2.5%	2.5%
STATISTICS	4	0	32	36
	0.4%	0.0%	3.3%	3.7%
TELUGU	2	0	22	24
	0.2%	0.0%	2.3%	2.5%
ZOOLOGY	3	4	29	36
	0.3%	0.4%	3.0%	3.7%
Total	24	28	920	972
	2.5%	2.9%	94.7%	100.0%

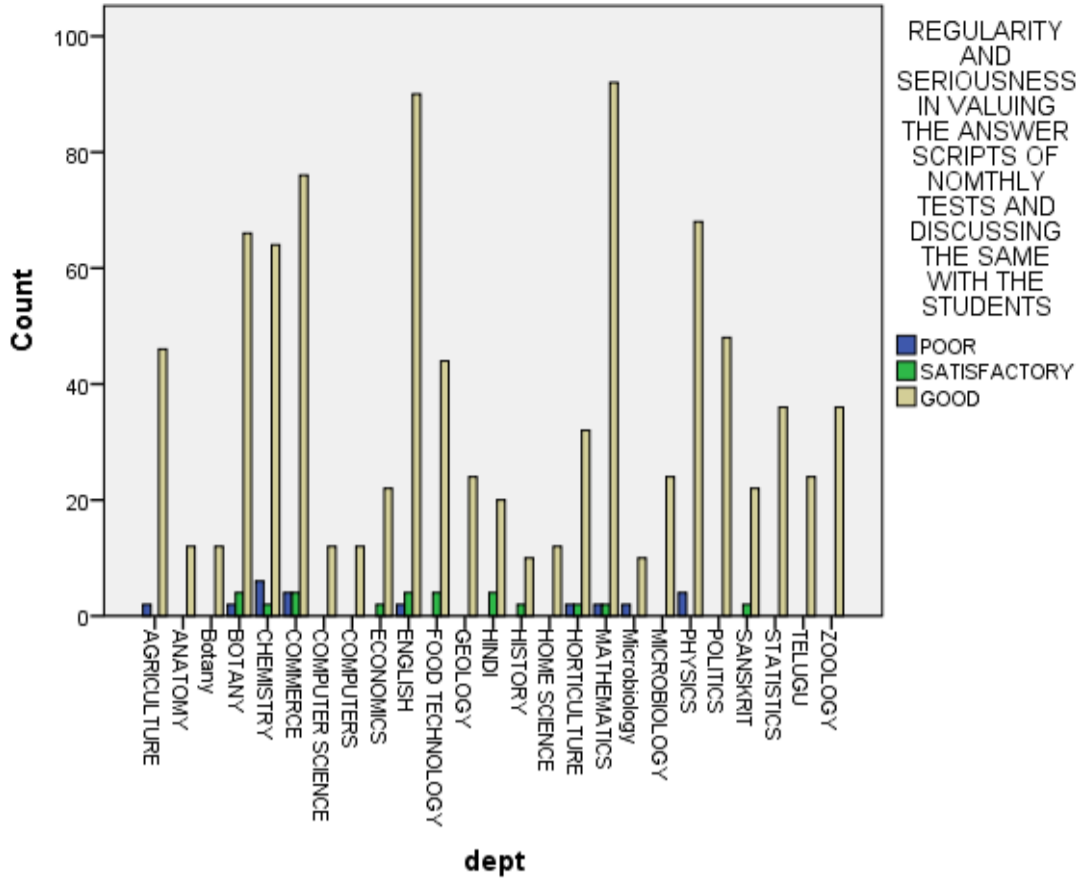
Bar Chart



REGULARITY AND SERIOUSNESS IN VALUING THE ANSWER SCRIPTS OF NOMTHLY TESTS AND DISCUSSING THE SAME WITH THE STUDENTS

REGULARITY AND SERIOUSNESS IN VALUING THE ANSWER SCRIPTS OF NOMTHLY TESTS AND DISCUSSING THE SAME WITH THE STUDENTS				Total
	POOR	SATISFACTORY	GOOD	
AGRICULTURE	2	0	46	48
	0.2%	0.0%	4.7%	4.9%
ANATOMY	0	0	12	12
	0.0%	0.0%	1.2%	1.2%
Botany	0	0	12	12
	0.0%	0.0%	1.2%	1.2%
BOTANY	2	4	66	72
	0.2%	0.4%	6.8%	7.4%
CHEMISTRY	6	2	64	72
	0.6%	0.2%	6.6%	7.4%
COMMERCE	4	4	76	84
	0.4%	0.4%	7.8%	8.6%
COMPUTER SCIENCE	0	0	12	12
	0.0%	0.0%	1.2%	1.2%
COMPUTERS	0	0	12	12
	0.0%	0.0%	1.2%	1.2%
ECONOMICS	0	2	22	24
	0.0%	0.2%	2.3%	2.5%
ENGLISH	2	4	90	96
	0.2%	0.4%	9.3%	9.9%
FOOD TECHNOLOGY	0	4	44	48
	0.0%	0.4%	4.5%	4.9%
GEOLOGY	0	0	24	24
	0.0%	0.0%	2.5%	2.5%
HINDI	0	4	20	24
	0.0%	0.4%	2.1%	2.5%
HISTORY	0	2	10	12
	0.0%	0.2%	1.0%	1.2%
HOME SCIENCE	0	0	12	12
	0.0%	0.0%	1.2%	1.2%
HORTICULTURE	2	2	32	36
	0.2%	0.2%	3.3%	3.7%
MATHEMATICS	2	2	92	96
	0.2%	0.2%	9.5%	9.9%
Microbiology	2	0	10	12
	0.2%	0.0%	1.0%	1.2%
MICROBIOLOGY	0	0	24	24
	0.0%	0.0%	2.5%	2.5%
PHYSICS	4	0	68	72
	0.4%	0.0%	7.0%	7.4%
POLITICS	0	0	48	48
	0.0%	0.0%	4.9%	4.9%
SANSKRIT	0	2	22	24
	0.0%	0.2%	2.3%	2.5%
STATISTICS	0	0	36	36
	0.0%	0.0%	3.7%	3.7%
TELUGU	0	0	24	24
	0.0%	0.0%	2.5%	2.5%
ZOOLOGY	0	0	36	36
	0.0%	0.0%	3.7%	3.7%
Total	26	32	914	972
	2.7%	3.3%	94.0%	100.0%

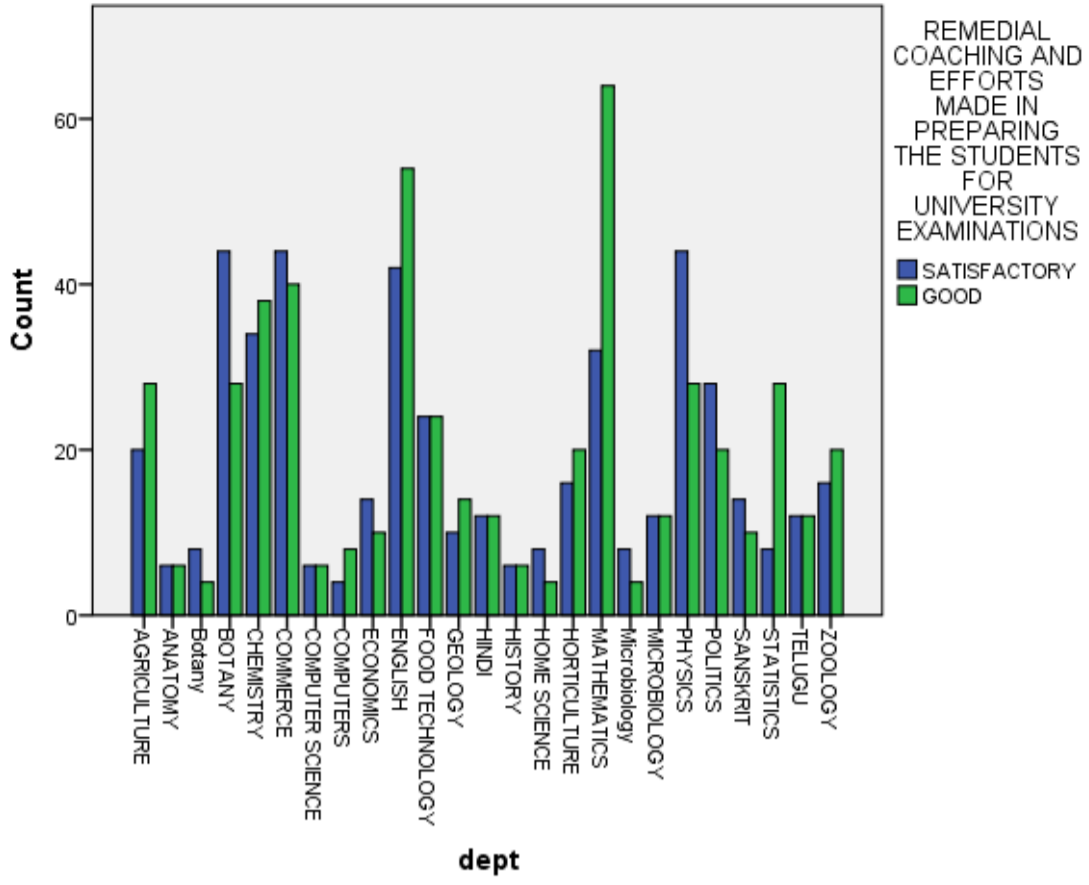
Bar Chart



**REMEDIAL COACHING AND EFFORTS MADE IN
PREPARING THE STUDENTS FOR UNIVERSITY
EXAMINATIONS**

REMEDIAL COACHING AND EFFORTS MADE IN PREPARING THE STUDENTS FOR UNIVERSITY EXAMINATIONS			Total
	SATISFACTORY	GOOD	
AGRICULTURE	20	28	48
	2.1%	2.9%	4.9%
ANATOMY	6	6	12
	0.6%	0.6%	1.2%
Botany	8	4	12
	0.8%	0.4%	1.2%
BOTANY	44	28	72
	4.5%	2.9%	7.4%
CHEMISTRY	34	38	72
	3.5%	3.9%	7.4%
COMMERCE	44	40	84
	4.5%	4.1%	8.6%
COMPUTER SCIENCE	6	6	12
	0.6%	0.6%	1.2%
COMPUTERS	4	8	12
	0.4%	0.8%	1.2%
ECONOMICS	14	10	24
	1.4%	1.0%	2.5%
ENGLISH	42	54	96
	4.3%	5.6%	9.9%
FOOD TECHNOLOGY	24	24	48
	2.5%	2.5%	4.9%
GEOLOGY	10	14	24
	1.0%	1.4%	2.5%
HINDI	12	12	24
	1.2%	1.2%	2.5%
HISTORY	6	6	12
	0.6%	0.6%	1.2%
HOME SCIENCE	8	4	12
	0.8%	0.4%	1.2%
HORTICULTURE	16	20	36
	1.6%	2.1%	3.7%
MATHEMATICS	32	64	96
	3.3%	6.6%	9.9%
Microbiology	8	4	12
	0.8%	0.4%	1.2%
MICROBIOLOGY	12	12	24
	1.2%	1.2%	2.5%
PHYSICS	44	28	72
	4.5%	2.9%	7.4%
POLITICS	28	20	48
	2.9%	2.1%	4.9%
SANSKRIT	14	10	24
	1.4%	1.0%	2.5%
STATISTICS	8	28	36
	0.8%	2.9%	3.7%
TELUGU	12	12	24
	1.2%	1.2%	2.5%
ZOOLOGY	16	20	36
	1.6%	2.1%	3.7%
Total	472	500	972
	48.6%	51.4%	100.0%

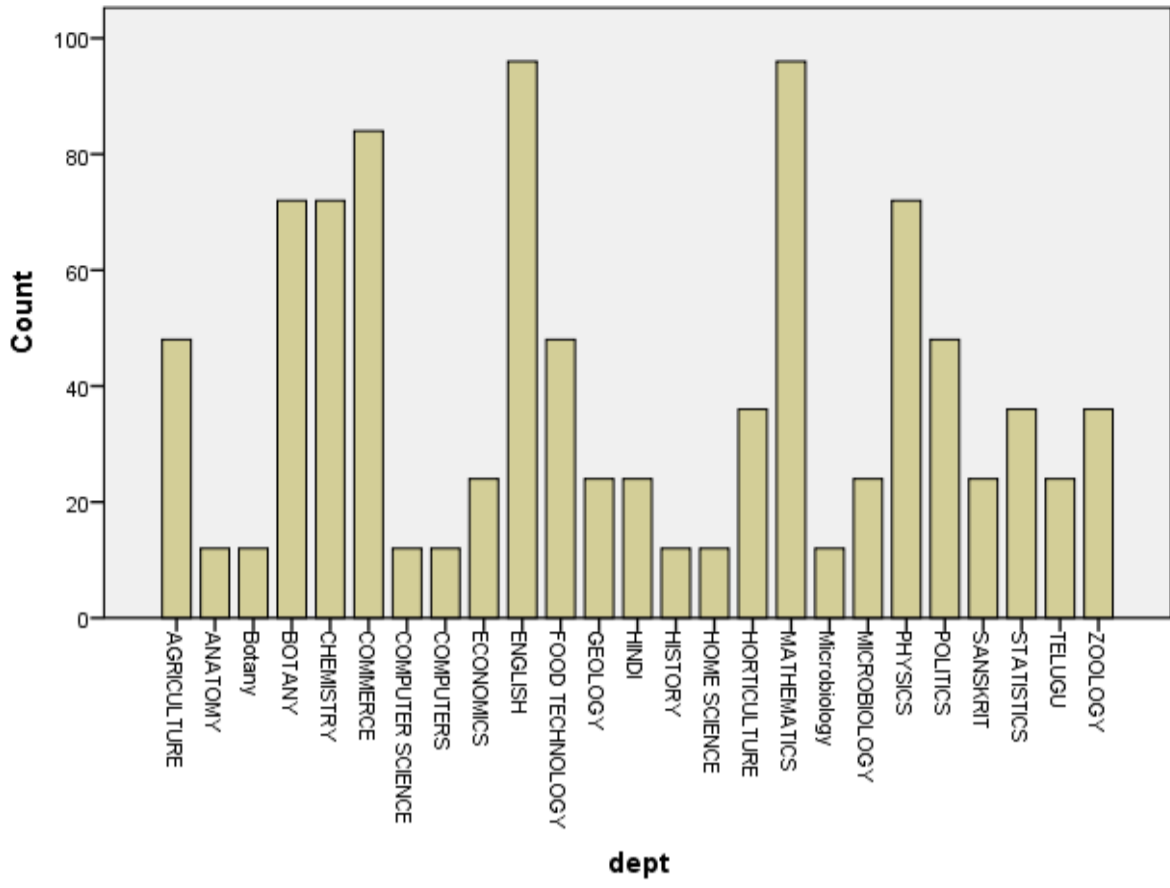
Bar Chart



**REGULARITY AND PUNCTUALITY TO THE
CLASS**

REGULARITY AND PUNCTUALITY TO THE CLASS		Total
	GOOD	
AGRICULTURE	48	48
	4.9%	4.9%
ANATOMY	12	12
	1.2%	1.2%
Botany	12	12
	1.2%	1.2%
BOTANY	72	72
	7.4%	7.4%
CHEMISTRY	72	72
	7.4%	7.4%
COMMERCE	84	84
	8.6%	8.6%
COMPUTER SCIENCE	12	12
	1.2%	1.2%
COMPUTERS	12	12
	1.2%	1.2%
ECONOMICS	24	24
	2.5%	2.5%
ENGLISH	96	96
	9.9%	9.9%
FOOD TECHNOLOGY	48	48
	4.9%	4.9%
GEOLOGY	24	24
	2.5%	2.5%
HINDI	24	24
	2.5%	2.5%
HISTORY	12	12
	1.2%	1.2%
HOME SCIENCE	12	12
	1.2%	1.2%
HORTICULTURE	36	36
	3.7%	3.7%
MATHEMATICS	96	96
	9.9%	9.9%
Microbiology	12	12
	1.2%	1.2%
MICROBIOLOGY	24	24
	2.5%	2.5%
PHYSICS	72	72
	7.4%	7.4%
POLITICS	48	48
	4.9%	4.9%
SANSKRIT	24	24
	2.5%	2.5%
STATISTICS	36	36
	3.7%	3.7%
TELUGU	24	24
	2.5%	2.5%
ZOOLOGY	36	36
	3.7%	3.7%
	972	972
	100.0%	100.0%

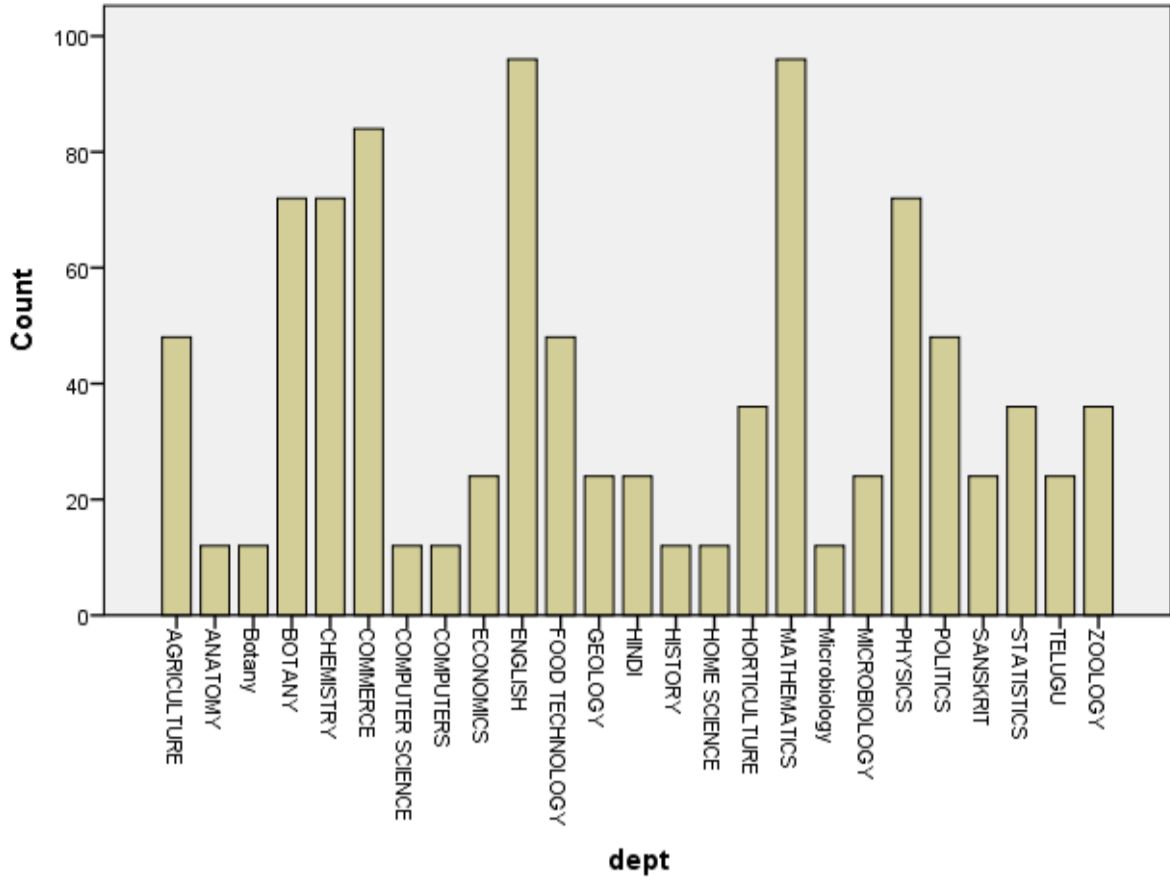
Bar Chart



**ENTHUSIASM SHOWN TO ENCOURAGE AND
GUIDE STUENTS IN CURRICULAR, EXTRA-
CURRICULAR, CULTURAL ACTIVITIES,
COMMUNITY SERVICE ETC.,**

ENTHUSIASM SHOWN TO ENCOURAGE AND GUIDE STUENTS IN CURRICULAR, EXTRA-CURRICULAR, CULTURAL ACTIVITIES, COMMUNITY SERVICE ETC.,		Total
	GOOD	
AGRICULTURE	48	48
	4.9%	4.9%
ANATOMY	12	12
	1.2%	1.2%
Botany	12	12
	1.2%	1.2%
BOTANY	72	72
	7.4%	7.4%
CHEMISTRY	72	72
	7.4%	7.4%
COMMERCE	84	84
	8.6%	8.6%
COMPUTER SCIENCE	12	12
	1.2%	1.2%
COMPUTERS	12	12
	1.2%	1.2%
ECONOMICS	24	24
	2.5%	2.5%
ENGLISH	96	96
	9.9%	9.9%
FOOD TECHNOLOGY	48	48
	4.9%	4.9%
GEOLOGY	24	24
	2.5%	2.5%
HINDI	24	24
	2.5%	2.5%
HISTORY	12	12
	1.2%	1.2%
HOME SCIENCE	12	12
	1.2%	1.2%
HORTICULTURE	36	36
	3.7%	3.7%
MATHEMATICS	96	96
	9.9%	9.9%
Microbiology	12	12
	1.2%	1.2%
MICROBIOLOGY	24	24
	2.5%	2.5%
PHYSICS	72	72
	7.4%	7.4%
POLITICS	48	48
	4.9%	4.9%
SANSKRIT	24	24
	2.5%	2.5%
STATISTICS	36	36
	3.7%	3.7%
TELUGU	24	24
	2.5%	2.5%
ZOOLOGY	36	36
	3.7%	3.7%
Total	972	972
	100.0%	100.0%

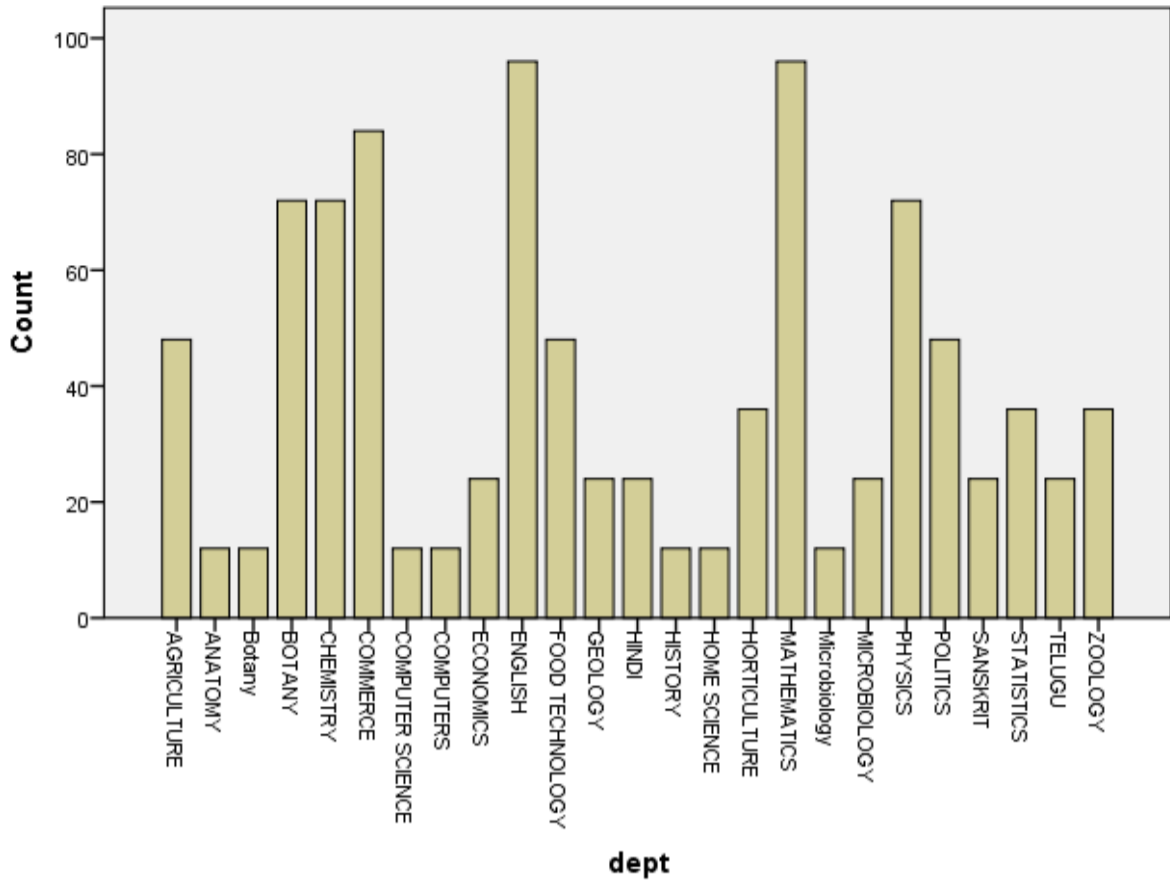
Bar Chart



COUNSELLING AND CAREER GUIDENCE

COUNSELLING AND CAREER GUIDENCE		Total
	GOOD	
AGRICULTURE	48	48
	4.9%	4.9%
ANATOMY	12	12
	1.2%	1.2%
Botany	12	12
	1.2%	1.2%
BOTANY	72	72
	7.4%	7.4%
CHEMISTRY	72	72
	7.4%	7.4%
COMMERCE	84	84
	8.6%	8.6%
COMPUTER SCIENCE	12	12
	1.2%	1.2%
COMPUTERS	12	12
	1.2%	1.2%
ECONOMICS	24	24
	2.5%	2.5%
ENGLISH	96	96
	9.9%	9.9%
FOOD TECHNOLOGY	48	48
	4.9%	4.9%
GEOLOGY	24	24
	2.5%	2.5%
HINDI	24	24
	2.5%	2.5%
HISTORY	12	12
	1.2%	1.2%
HOME SCIENCE	12	12
	1.2%	1.2%
HORTICULTURE	36	36
	3.7%	3.7%
MATHEMATICS	96	96
	9.9%	9.9%
Microbiology	12	12
	1.2%	1.2%
MICROBIOLOGY	24	24
	2.5%	2.5%
PHYSICS	72	72
	7.4%	7.4%
POLITICS	48	48
	4.9%	4.9%
SANSKRIT	24	24
	2.5%	2.5%
STATISTICS	36	36
	3.7%	3.7%
TELUGU	24	24
	2.5%	2.5%
ZOOLOGY	36	36
	3.7%	3.7%
Total	972	972
	100.0%	100.0%

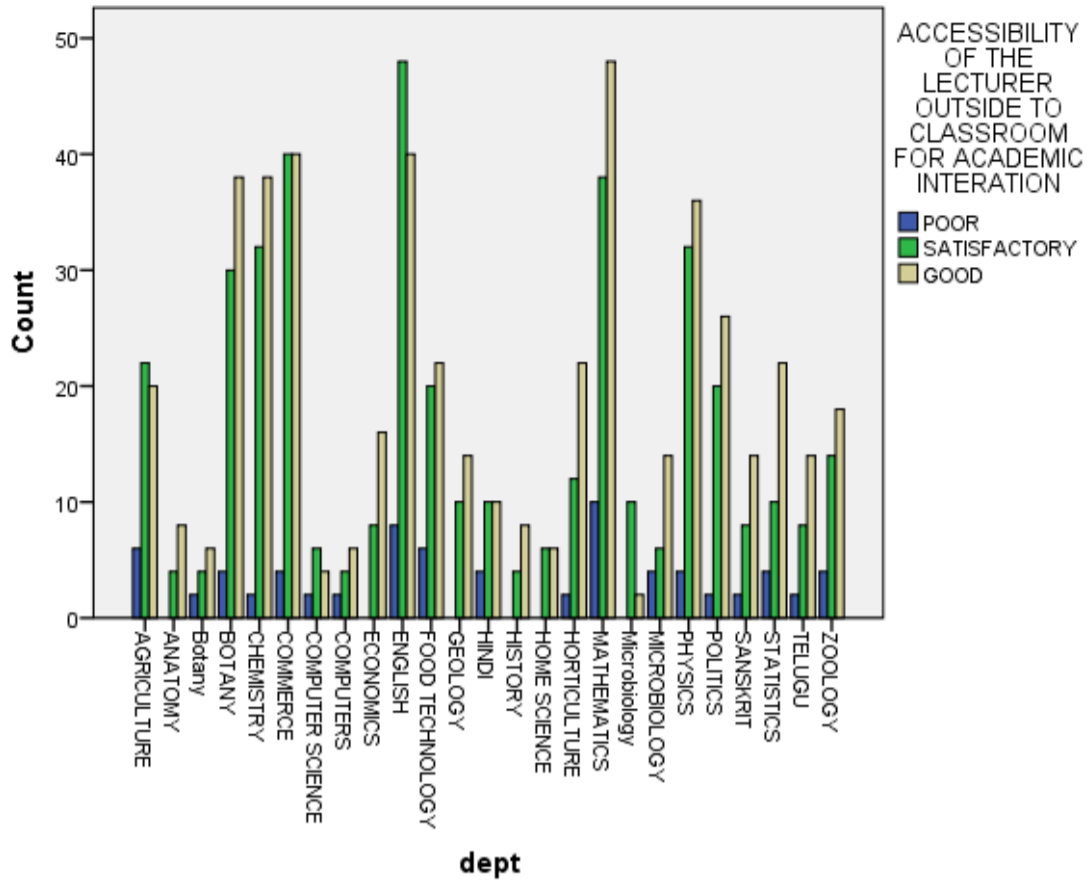
Bar Chart



**ACCESSIBILITY OF THE LECTURER OUTSIDE TO CLASSROOM FOR
ACADEMIC INTERATION**

ACCESSIBILITY OF THE LECTURER OUTSIDE TO CLASSROOM FOR ACADEMIC INTERATION				Total
	POOR	SATISFACTORY	GOOD	
AGRICULTURE	6	22	20	48
	0.6%	2.3%	2.1%	4.9%
ANATOMY	0	4	8	12
	0.0%	0.4%	0.8%	1.2%
Botany	2	4	6	12
	0.2%	0.4%	0.6%	1.2%
BOTANY	4	30	38	72
	0.4%	3.1%	3.9%	7.4%
CHEMISTRY	2	32	38	72
	0.2%	3.3%	3.9%	7.4%
COMMERCE	4	40	40	84
	0.4%	4.1%	4.1%	8.6%
COMPUTER SCIENCE	2	6	4	12
	0.2%	0.6%	0.4%	1.2%
COMPUTERS	2	4	6	12
	0.2%	0.4%	0.6%	1.2%
ECONOMICS	0	8	16	24
	0.0%	0.8%	1.6%	2.5%
ENGLISH	8	48	40	96
	0.8%	4.9%	4.1%	9.9%
FOOD TECHNOLOGY	6	20	22	48
	0.6%	2.1%	2.3%	4.9%
GEOLOGY	0	10	14	24
	0.0%	1.0%	1.4%	2.5%
HINDI	4	10	10	24
	0.4%	1.0%	1.0%	2.5%
HISTORY	0	4	8	12
	0.0%	0.4%	0.8%	1.2%
HOME SCIENCE	0	6	6	12
	0.0%	0.6%	0.6%	1.2%
HORTICULTURE	2	12	22	36
	0.2%	1.2%	2.3%	3.7%
MATHEMATICS	10	38	48	96
	1.0%	3.9%	4.9%	9.9%
Microbiology	0	10	2	12
	0.0%	1.0%	0.2%	1.2%
MICROBIOLOGY	4	6	14	24
	0.4%	0.6%	1.4%	2.5%
PHYSICS	4	32	36	72
	0.4%	3.3%	3.7%	7.4%
POLITICS	2	20	26	48
	0.2%	2.1%	2.7%	4.9%
SANSKRIT	2	8	14	24
	0.2%	0.8%	1.4%	2.5%
STATISTICS	4	10	22	36
	0.4%	1.0%	2.3%	3.7%
TELUGU	2	8	14	24
	0.2%	0.8%	1.4%	2.5%
ZOOLOGY	4	14	18	36
	0.4%	1.4%	1.9%	3.7%
Total	74	406	492	972
	7.6%	41.8%	50.6%	100.0%

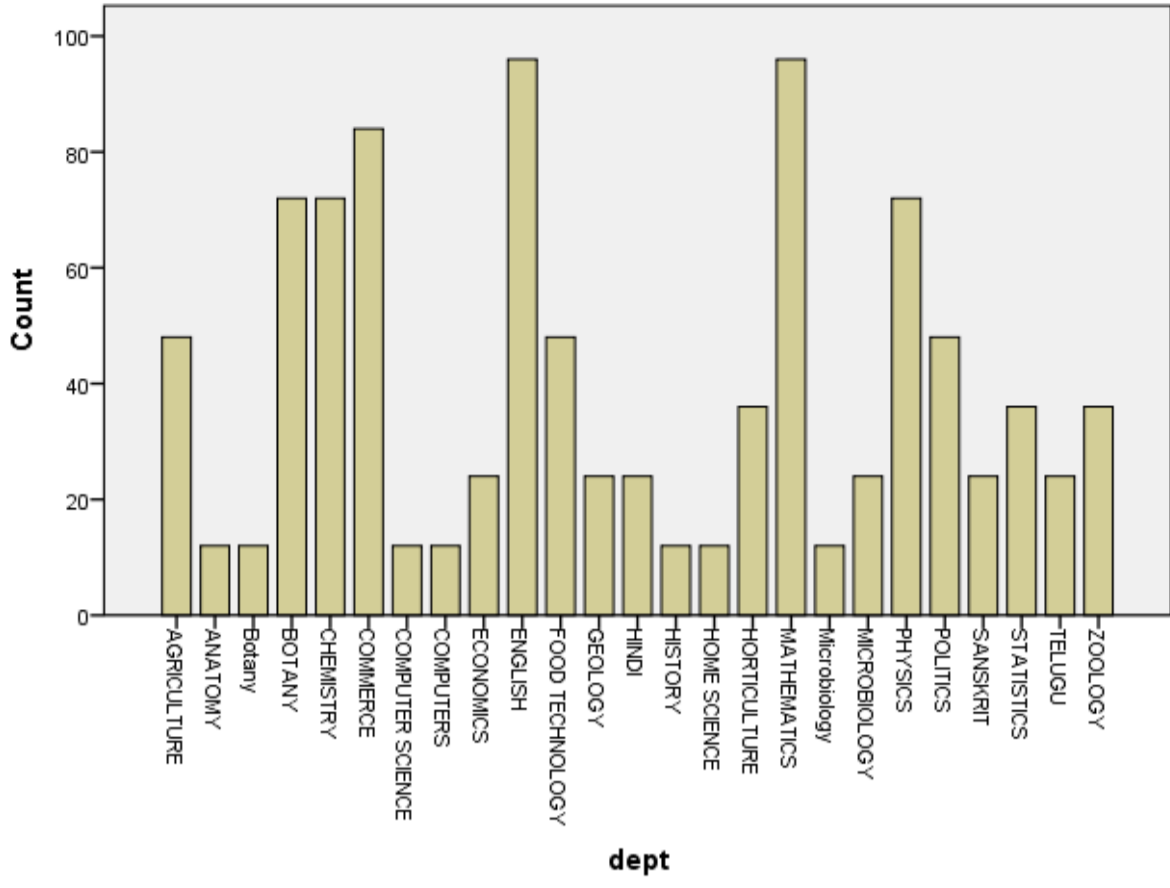
Bar Chart



**PERSONAL CARE AND AFFECTION
WHILE DEALING WITH INDIVIDUAL
STUDENTS AND HELPING STUDENTS**

PERSONAL CARE AND AFFECTION WHILE DEALING WITH INDIVIDUAL STUDENTS AND HELPING STUDENTS		Total
	GOOD	
AGRICULTURE	48	48
	4.9%	4.9%
ANATOMY	12	12
	1.2%	1.2%
Botany	12	12
	1.2%	1.2%
BOTANY	72	72
	7.4%	7.4%
CHEMISTRY	72	72
	7.4%	7.4%
COMMERCE	84	84
	8.6%	8.6%
COMPUTER SCIENCE	12	12
	1.2%	1.2%
COMPUTERS	12	12
	1.2%	1.2%
ECONOMICS	24	24
	2.5%	2.5%
ENGLISH	96	96
	9.9%	9.9%
FOOD TECHNOLOGY	48	48
	4.9%	4.9%
GEOLOGY	24	24
	2.5%	2.5%
HINDI	24	24
	2.5%	2.5%
HISTORY	12	12
	1.2%	1.2%
HOME SCIENCE	12	12
	1.2%	1.2%
HORTICULTURE	36	36
	3.7%	3.7%
MATHEMATICS	96	96
	9.9%	9.9%
Microbiology	12	12
	1.2%	1.2%
MICROBIOLOGY	24	24
	2.5%	2.5%
PHYSICS	72	72
	7.4%	7.4%
POLITICS	48	48
	4.9%	4.9%
SANSKRIT	24	24
	2.5%	2.5%
STATISTICS	36	36
	3.7%	3.7%
TELUGU	24	24
	2.5%	2.5%
ZOOLOGY	36	36
	3.7%	3.7%
Total	972	972
	100.0%	100.0%

Bar Chart



OVERALL OPENION ON THE LECTURER

OVERALL OPENION ON THE LECTURER		Total
	GOOD	
AGRICULTURE	48	48
	4.9%	4.9%
ANATOMY	12	12
	1.2%	1.2%
Botany	12	12
	1.2%	1.2%
BOTANY	72	72
	7.4%	7.4%
CHEMISTRY	72	72
	7.4%	7.4%
COMMERCE	84	84
	8.6%	8.6%
COMPUTER SCIENCE	12	12
	1.2%	1.2%
COMPUTERS	12	12
	1.2%	1.2%
ECONOMICS	24	24
	2.5%	2.5%
ENGLISH	96	96
	9.9%	9.9%
FOOD TECHNOLOGY	48	48
	4.9%	4.9%
GEOLOGY	24	24
	2.5%	2.5%
HINDI	24	24
	2.5%	2.5%
HISTORY	12	12
	1.2%	1.2%
HOME SCIENCE	12	12
	1.2%	1.2%
HORTICULTURE	36	36
	3.7%	3.7%
MATHEMATICS	96	96
	9.9%	9.9%
Microbiology	12	12
	1.2%	1.2%
MICROBIOLOGY	24	24
	2.5%	2.5%
PHYSICS	72	72
	7.4%	7.4%
POLITICS	48	48
	4.9%	4.9%
SANSKRIT	24	24
	2.5%	2.5%
STATISTICS	36	36
	3.7%	3.7%
TELUGU	24	24
	2.5%	2.5%
ZOOLOGY	36	36
	3.7%	3.7%
Total	972	972
	100.0%	100.0 %

Bar Chart

