

**HINDU COLLEGE :: GUNTUR**  
(NAAC 'B++' Grade Accreditation)

**Internal Quality Assurance Cell**  
(IQAC)

**AQAR 2023-24**



**1.4.2**  
**FEEDBACK**

#### **1.4.2 - Feedback process of the Institution may be classified as follows**

Hindu College, Guntur is transparent in getting feedback from the students and analysing it. Various reforms in teaching and learning have been taken on the basis of feedback during the previous years. In the light of present pandemic situation, we took good number of initiative t provide quality education to the students. IQAC played a leading role in all these crucial situations.

We have been following Feedback proforma prescribed by NAAC and approved / advised by the Academic Cell of Collegiate Education, Andhra Pradesh. Out of 2120 students during the year 717 students have been taken for the present analysis on the basis of clustered sampling method. All the schedules were canvased by a team of IQAC from board streams Arts, Science, Commerce and Languages. Feedback for Arts courses have been collected by Science team of IQAC. Similarly for Science, Language faculty; for languages Commerce faculty and for languages arts faculty of IQAC team collected the information.

##### **Major Observations:**

The analysis broadly concentrated on 07 major areas of teaching and learning process;

1. Students perception on Teaching ability of faculty.
2. Students perception on Internet generated by faculty
3. Accessibility of faculty in and outside of the class.
4. Ability to test the understanding of the course
5. Sincerity / commitment of the faculty.
6. Completion of syllabus and
7. Overall rating

The data on Teaching ability of the faculty, it is found that less than one percent of the total faculty got 'satisfactory' score. Out of those 06, 03 are from Science, 02 from Commerce and 01 from Languages. The management instructe4d those faculty

to improve their teaching standards. Department wise analysis shows that 02 of them are from Horticulture and 01 from Sanskrit, 01 from Electronics and the remaining 02 from Commerce. Most of the students who placed their faculty at 'Good' hailed from Commerce (11). All the remaining 97% students replied that their faculties are 'Excellent'.

Interest generated by the faculty, particularly while teaching, is very important for better understanding of the subject. The data proves that almost 99 % of students felt that their faculty is excellent / good in generating interest. However, in mathematics (03), Agriculture (02), Chemistry (02), Computers (01) and History (01) student placed their faculty in 'Satisfactory' category.

With respect to Accessibility of the faculty in and out of the class, it is very happy note that, all the students replied that their faculties are easily approachable. This shows better teacher-student relationship. In History, Commerce and in English there occurred. 'Good' placed faculty and all the remaining faculty placed as 'Excellent' in approachability.

Testing the student after the completion of Topic / Chapter is necessary to assess the understanding level of the student. The information on this proves that almost all the faculty are able to test / judge the students their level of understanding. 97.2 % of the students replied 'Excellent' for this equation. However, in Agriculture, Economics, Electronics, Geology, Horticulture, Mathematics, Statistics and Telugu some students placed their faculty at 'Good' ration.

It is a fact that a sincere and committed teaching can produce a sincere and committed students for the future of the nation. The information in this reveals that only 09, out of 717 respondent students replied 'Good' about their faculty. It is more in case of Commerce wing. The Principal shared the same with concerned faculty and advised to improve their commitment levels. Similarly 01 Chemistry and 02 Telugu faculty are also asked to be sincere as well as Punctual.

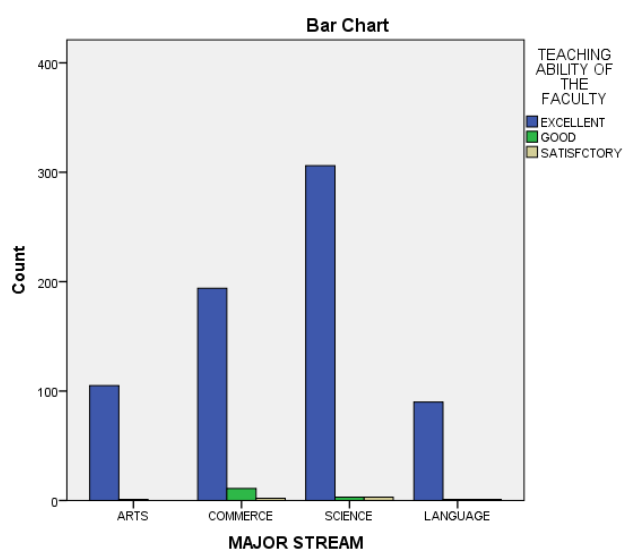
Normally, in some colleges, some faculty may not complete their syllabus. But, Hindu College, Guntur is exceptional in this. All the faculty of this college completed their syllabus on time and all the students revealed the same.

With respect to 'overall rating', no teacher was placed at satisfactory / poor grade. About 98% of the faculty got 'Excellent' grade. 04 students of Botany; 04 students of English; 03 students of Physics and 02 students of Mathematics placed their faculty at 'Good' grade.

Hence, it can be concluded that the overall impression of the students on all these aspects is Excellent. However, the quality is a continuous process we need to work further hard for improving quality of education imparted.

### TEACHING ABILITY OF THE FACULTY

	TEACHING ABILITY OF THE FACULTY			Total
	EXCELLENT	GOOD	SATISFACTORY	
ARTS	105	1	0	106
	99.1%	0.9%	0.0%	100.0%
COMMERC E	194	11	2	207
	93.7%	5.3%	1.0%	100.0%
SCIENCE	306	3	3	312
	98.1%	1.0%	1.0%	100.0%
LANGUAGE	90	1	1	92
	97.8%	1.1%	1.1%	100.0%
Total	695	16	6	717
	96.9%	2.2%	0.8%	100.0%

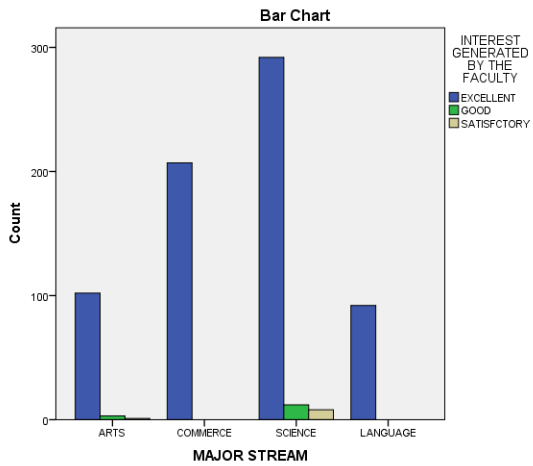


**TEACHING ABILITY OF THE FACULTY**

	TEACHING ABILITY OF THE FACULTY			Total
	EXCELLENT	GOOD	SATISFACTORY	
AGRICULTURE	15	0	0	15
	100.0%	0.0%	0.0%	100.0%
BOTANY	38	1	0	39
	97.4%	2.6%	0.0%	100.0%
CHEMISTRY	47	0	0	47
	100.0%	0.0%	0.0%	100.0%
COMPUTERS	32	0	0	32
	100.0%	0.0%	0.0%	100.0%
COMMERCE	194	11	2	207
	93.7%	5.3%	1.0%	100.0%
ECONOMICS	45	0	0	45
	100.0%	0.0%	0.0%	100.0%
ELECTRONICS	17	0	1	18
	94.4%	0.0%	5.6%	100.0%
ENGLISH	66	0	0	66
	100.0%	0.0%	0.0%	100.0%
FOOD AND TECH	18	0	0	18
	100.0%	0.0%	0.0%	100.0%
GEOLOGY	18	0	0	18
	100.0%	0.0%	0.0%	100.0%
HINDI	7	0	0	7
	100.0%	0.0%	0.0%	100.0%
HISTORY	18	0	0	18
	100.0%	0.0%	0.0%	100.0%
HORTICULTURE	18	0	0	18
	100.0%	0.0%	0.0%	100.0%
MATHEMATICS	34	0	2	36
	94.4%	0.0%	5.6%	100.0%
PHYICS	35	0	0	35
	100.0%	0.0%	0.0%	100.0%
POLITICS	24	1	0	25
	96.0%	4.0%	0.0%	100.0%
SANSKRIT	15	1	1	17
	88.2%	5.9%	5.9%	100.0%
STATISTICS	18	2	0	20
	90.0%	10.0%	0.0%	100.0%
TELUGU	20	0	0	20
	100.0%	0.0%	0.0%	100.0%
ZOOLOGY	16	0	0	16
	100.0%	0.0%	0.0%	100.0%
Total	695	16	6	717
	96.9%	2.2%	0.8%	100.0%

### INTEREST GENERATED BY THE FACULTY

	INTEREST GENERATED BY THE FACULTY			Total
	EXCELLENT	GOOD	SATISFACTORY	
ARTS	102	3	1	106
	96.2%	2.8%	0.9%	100.0%
COMMERCE	207	0	0	207
	100.0%	0.0%	0.0%	100.0%
SCIENCE	292	12	8	312
	93.6%	3.8%	2.6%	100.0%
LANGUAGE	92	0	0	92
	100.0%	0.0%	0.0%	100.0%
Total	693	15	9	717
	96.7%	2.1%	1.3%	100.0%



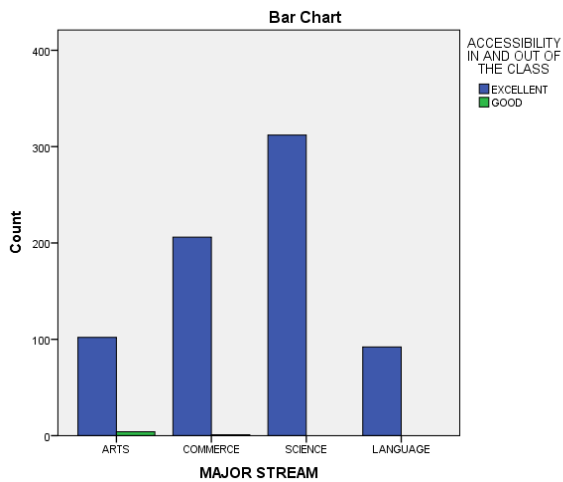
**INTEREST GENERATED BY THE FACULTY**

	INTEREST GENERATED BY THE FACULTY			Total
	EXCELLENT	GOOD	SATISFACTORY	
AGRICULTURE	13 86.7%	0 0.0%	2 13.3%	15 100.0%
BOTANY	39 100.0%	0 0.0%	0 0.0%	39 100.0%
CHEMISTRY	41 87.2%	4 8.5%	2 4.3%	47 100.0%
COMPUTERS	25 78.1%	6 18.8%	1 3.1%	32 100.0%
COMMERCE	207 100.0%	0 0.0%	0 0.0%	207 100.0%
ECONOMICS	43 95.6%	2 4.4%	0 0.0%	45 100.0%
ELECTRONICS	18 100.0%	0 0.0%	0 0.0%	18 100.0%
ENGLISH	65 98.5%	1 1.5%	0 0.0%	66 100.0%
FOOD AND TECH	18 100.0%	0 0.0%	0 0.0%	18 100.0%
GEOLOGY	17 94.4%	1 5.6%	0 0.0%	18 100.0%
HINDI	7 100.0%	0 0.0%	0 0.0%	7 100.0%
HISTORY	17 94.4%	0 0.0%	1 5.6%	18 100.0%
HORTICULTURE	18 100.0%	0 0.0%	0 0.0%	18 100.0%
MATHEMATICS	32 88.9%	1 2.8%	3 8.3%	36 100.0%
PHYICS	35 100.0%	0 0.0%	0 0.0%	35 100.0%
POLITICS	25 100.0%	0 0.0%	0 0.0%	25 100.0%
SANSKRIT	17 100.0%	0 0.0%	0 0.0%	17 100.0%
STATISTICS	20 100.0%	0 0.0%	0 0.0%	20 100.0%
TELUGU	20 100.0%	0 0.0%	0 0.0%	20 100.0%
ZOOLOGY	16 100.0%	0 0.0%	0 0.0%	16 100.0%
Total	693 96.7%	15 2.1%	9 1.3%	717 100.0%



### ACCESSIBILITY IN AND OUT OF THE CLASS

	ACCESSIBILITY IN AND OUT OF THE CLASS		Total
	EXCELLENT	GOOD	
ARTS	102	4	106
	96.2%	3.8%	100.0%
COMMERCE	206	1	207
	99.5%	0.5%	100.0%
SCIENCE	312	0	312
	100.0%	0.0%	100.0%
LANGUAGE	92	0	92
	100.0%	0.0%	100.0%
Total	712	5	717
	99.3%	0.7%	100.0%

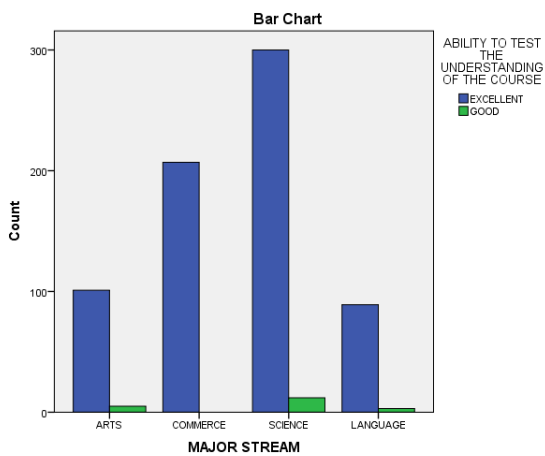


**ACCESSIBILITY IN AND OUT OF THE CLASS**

	ACCESSIBILITY IN AND OUT OF THE CLASS		Total
	EXCELLENT	GOOD	
AGRICULTURE	15 100.0%	0 0.0%	15 100.0%
BOTANY	39 100.0%	0 0.0%	39 100.0%
CHEMISTRY	47 100.0%	0 0.0%	47 100.0%
COMPUTERS	32 100.0%	0 0.0%	32 100.0%
COMMERCE	206 99.5%	1 0.5%	207 100.0%
ECONOMICS	45 100.0%	0 0.0%	45 100.0%
ELECTRONICS	18 100.0%	0 0.0%	18 100.0%
ENGLISH	64 97.0%	2 3.0%	66 100.0%
FOOD AND TECH	18 100.0%	0 0.0%	18 100.0%
GEOLOGY	18 100.0%	0 0.0%	18 100.0%
HINDI	7 100.0%	0 0.0%	7 100.0%
HISTORY	16 88.9%	2 11.1%	18 100.0%
HORTICULTURE	18 100.0%	0 0.0%	18 100.0%
MATHEMATICS	36 100.0%	0 0.0%	36 100.0%
PHYICS	35 100.0%	0 0.0%	35 100.0%
POLITICS	25 100.0%	0 0.0%	25 100.0%
SANSKRIT	17 100.0%	0 0.0%	17 100.0%
STATISTICS	20 100.0%	0 0.0%	20 100.0%
TELUGU	20 100.0%	0 0.0%	20 100.0%
ZOOLOGY	16 100.0%	0 0.0%	16 100.0%
Total	712 99.3%	5 0.7%	717 100.0%

### ABILITY TO TEST THE UNDERSTANDING OF THE COURSE

MAJOR STREAM	ABILITY TO TEST THE UNDERSTANDING OF THE COURSE		Total
	EXCELLENT	GOOD	
ARTS	101	5	106
	95.3%	4.7%	100.0%
COMMERCE	207	0	207
	100.0%	0.0%	100.0%
SCIENCE	300	12	312
	96.2%	3.8%	100.0%
LANGUAGE	89	3	92
	96.7%	3.3%	100.0%
Total	697	20	717
	97.2%	2.8%	100.0%

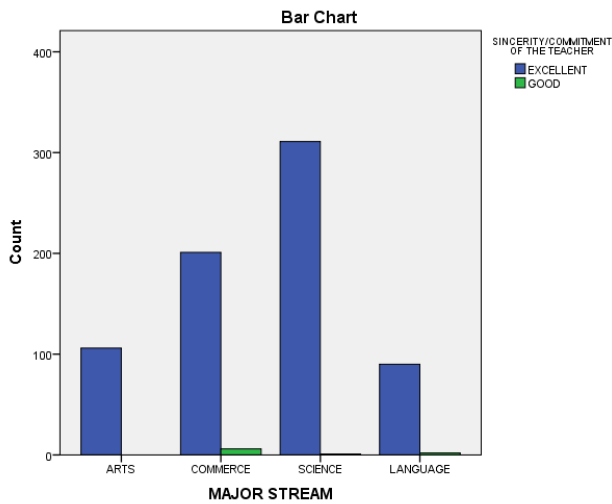


**ABILITY TO TEST THE UNDERSTANDING OF THE COURSE**

	ABILITY TO TEST THE UNDERSTANDING OF THE COURSE		Total
	EXCELLENT	GOOD	
AGRICULTURE	13 86.7%	2 13.3%	15 100.0%
BOTANY	39 100.0%	0 0.0%	39 100.0%
CHEMISTRY	47 100.0%	0 0.0%	47 100.0%
COMPUTERS	32 100.0%	0 0.0%	32 100.0%
COMMERCE	207 100.0%	0 0.0%	207 100.0%
ECONOMICS	40 88.9%	5 11.1%	45 100.0%
ELECTRONICS	16 88.9%	2 11.1%	18 100.0%
ENGLISH	66 100.0%	0 0.0%	66 100.0%
FOOD AND TECH	18 100.0%	0 0.0%	18 100.0%
GEOLOGY	18 100.0%	0 0.0%	18 100.0%
HINDI	6 85.7%	1 14.3%	7 100.0%
HISTORY	18 100.0%	0 0.0%	18 100.0%
HORTICULTURE	16 88.9%	2 11.1%	18 100.0%
MATHEMATICS	32 88.9%	4 11.1%	36 100.0%
PHYICS	35 100.0%	0 0.0%	35 100.0%
POLITICS	25 100.0%	0 0.0%	25 100.0%
SANSKRIT	17 100.0%	0 0.0%	17 100.0%
STATISTICS	18 90.0%	2 10.0%	20 100.0%
TELUGU	18 90.0%	2 10.0%	20 100.0%
ZOOLOGY	16 100.0%	0 0.0%	16 100.0%
Total	697 97.2%	20 2.8%	717 100.0%

### SINCERITY/COMMITMENT OF THE TEACHER

MAJOR STREAM	SINCERITY/COMMITMENT OF THE TEACHER		Total
	EXCELLENT	GOOD	
ARTS	106	0	106
	100.0%	0.0%	100.0%
COMMERCE	201	6	207
	97.1%	2.9%	100.0%
SCIENCE	311	1	312
	99.7%	0.3%	100.0%
LANGUAGE	90	2	92
	97.8%	2.2%	100.0%
Total	708	9	717
	98.7%	1.3%	100.0%

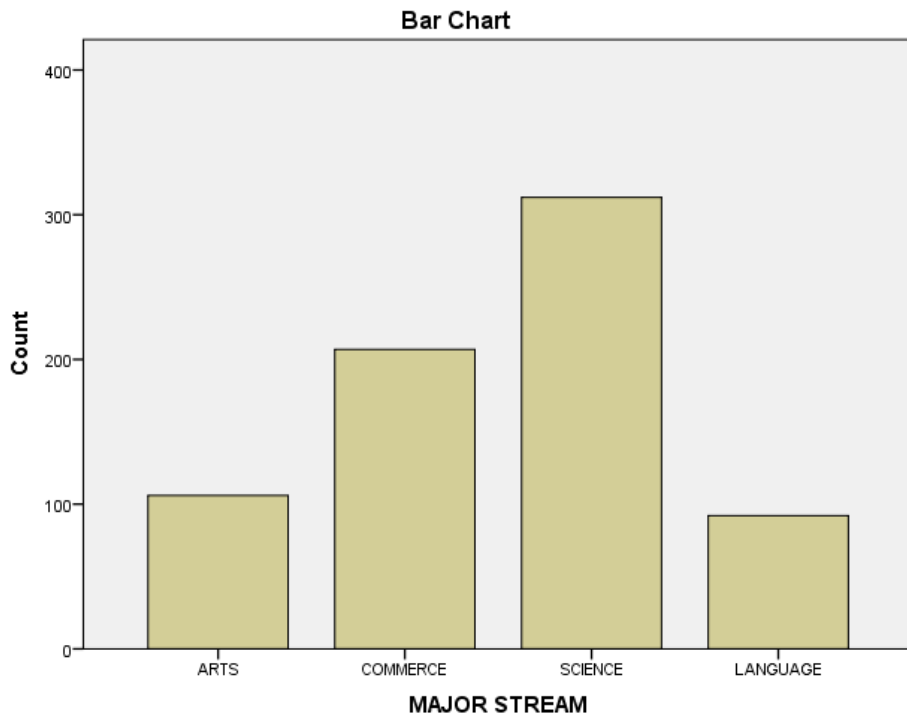


**SINCERITY/COMMITMENT OF THE TEACHER**

	SINCERITY/COMMITMENT OF THE TEACHER		Total
	EXCELLENT	GOOD	
AGRICULTURE	15 100.0%	0 0.0%	15 100.0%
BOTANY	39 100.0%	0 0.0%	39 100.0%
CHEMISTRY	46 97.9%	1 2.1%	47 100.0%
COMPUTERS	32 100.0%	0 0.0%	32 100.0%
COMMERCE	201 97.1%	6 2.9%	207 100.0%
ECONOMICS	45 100.0%	0 0.0%	45 100.0%
ELECTRONICS	18 100.0%	0 0.0%	18 100.0%
ENGLISH	66 100.0%	0 0.0%	66 100.0%
FOOD AND TECH	18 100.0%	0 0.0%	18 100.0%
GEOLOGY	18 100.0%	0 0.0%	18 100.0%
HINDI	7 100.0%	0 0.0%	7 100.0%
HISTORY	18 100.0%	0 0.0%	18 100.0%
HORTICULTURE	18 100.0%	0 0.0%	18 100.0%
MATHEMATICS	36 100.0%	0 0.0%	36 100.0%
PHYICS	35 100.0%	0 0.0%	35 100.0%
POLITICS	25 100.0%	0 0.0%	25 100.0%
SANSKRIT	17 100.0%	0 0.0%	17 100.0%
STATISTICS	20 100.0%	0 0.0%	20 100.0%
TELUGU	18 90.0%	2 10.0%	20 100.0%
ZOOLOGY	16 100.0%	0 0.0%	16 100.0%
Total	708 98.7%	9 1.3%	717 100.0%

**COMPLETION OF THE SYLLABUS**

MAJOR STREAM	COMPLETION OF THE SYLLABUS	Total
	EXCELLENT	
ARTS	106	106
	100.0%	100.0%
COMMERCE	207	207
	100.0%	100.0%
SCIENCE	312	312
	100.0%	100.0%
LANGUAGE	92	92
	100.0%	100.0%
Total	717	717
	100.0%	100.0%



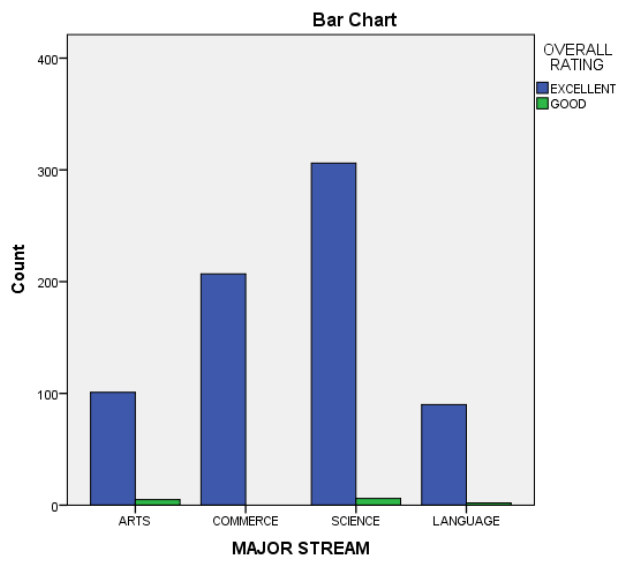
**COMPLETION OF THE SYLLABUS**

	COMPLETION OF THE SYLLABUS	Total
	EXCELLENT	
AGRICULTURE	15 100.0%	15 100.0%
BOTANY	39 100.0%	39 100.0%
CHEMISTRY	47 100.0%	47 100.0%
COMPUTERS	32 100.0%	32 100.0%
COMMERCE	207 100.0%	207 100.0%
ECONOMICS	45 100.0%	45 100.0%
ELECTRONICS	18 100.0%	18 100.0%
ENGLISH	66 100.0%	66 100.0%
FOOD AND TECH	18 100.0%	18 100.0%
GEOLOGY	18 100.0%	18 100.0%
HINDI	7 100.0%	7 100.0%
HISTORY	18 100.0%	18 100.0%
HORTICULTURE	18 100.0%	18 100.0%
MATHEMATICS	36 100.0%	36 100.0%
PHYICS	35 100.0%	35 100.0%
POLITICS	25 100.0%	25 100.0%
SANSKRIT	17 100.0%	17 100.0%
STATISTICS	20 100.0%	20 100.0%
TELUGU	20 100.0%	20 100.0%
ZOOLOGY	16 100.0%	16 100.0%
Total	717 100.0%	717 100.0%



**OVERALL RATING**

MAJOR STREAM	OVERALL RATING		Total
	EXCELLENT	GOOD	
ARTS	101	5	106
	95.3%	4.7%	100.0%
COMMERCE	207	0	207
	100.0%	0.0%	100.0%
SCIENCE	306	6	312
	98.1%	1.9%	100.0%
LANGUAGE	90	2	92
	97.8%	2.2%	100.0%
Total	704	13	717
	98.2%	1.8%	100.0%



**OVERALL RATING**

	OVERALL RATING		Total
	EXCELLENT	GOOD	
AGRICULTURE	15 100.0%	0 0.0%	15 100.0%
BOTANY	35 89.7%	4 10.3%	39 100.0%
CHEMISTRY	47 100.0%	0 0.0%	47 100.0%
COMPUTERS	32 100.0%	0 0.0%	32 100.0%
COMMERCE	207 100.0%	0 0.0%	207 100.0%
ECONOMICS	45 100.0%	0 0.0%	45 100.0%
ELECTRONICS	18 100.0%	0 0.0%	18 100.0%
ENGLISH	62 93.9%	4 6.1%	66 100.0%
FOOD AND TECH	18 100.0%	0 0.0%	18 100.0%
GEOLOGY	18 100.0%	0 0.0%	18 100.0%
HINDI	7 100.0%	0 0.0%	7 100.0%
HISTORY	18 100.0%	0 0.0%	18 100.0%
HORTICULTURE	18 100.0%	0 0.0%	18 100.0%
MATHEMATICS	36 100.0%	0 0.0%	36 100.0%
PHYICS	33 94.3%	2 5.7%	35 100.0%
POLITICS	22 88.0%	3 12.0%	25 100.0%
SANSKRIT	17 100.0%	0 0.0%	17 100.0%
STATISTICS	20 100.0%	0 0.0%	20 100.0%
TELUGU	20 100.0%	0 0.0%	20 100.0%
ZOOLOGY	16 100.0%	0 0.0%	16 100.0%
Total	704 98.2%	13 1.8%	717 100.0%