

HINDU COLLEGE GUNTUR



Student Satisfaction Survey

2023-24

STUDENT SATISFACTION SURVEY REPORT – 2023-24

Student Satisfaction Survey (SSS) is one of the mandatory criteria set by National Assessment and Accreditation Council (NAAC). It is also a pre qualifier for Assessment and Accreditation of the institution.

Utility of the Survey:

The Student Satisfaction Survey by NAAC primarily focuses on Teaching Learning Evaluation. It collects in-depth data of a student's satisfaction with the teaching learning environment of the college. The students responses are collected and analysed based on 21 questions designed by NAAC. After going through the question set one understands that the feedback collected from students is definitely useful for the streamlining the services offered to students. It seems that the survey was created by experts and leaders in the education to assist the educational institutions to define the success of the most important aspect of education- teaching and learning. The results of the survey summarize the expectations of the students and experts educationalists and the extent to which the College was able to meet these expectations.

Research Methodology:

This year also, the Student Satisfaction Survey was conducted by a team of teachers and a volunteer students in the month of January, 2025. The specific month was chosen so that teaching learning process in the first, Third and Fifth semester was completed and it is possible for students to retrospect and provide correct responses. Each question in the NAAC SSS format is aimed at collecting factual opinion of students on curriculum, completion of syllabus, preparedness of the teachers, reaction of the students regarding pedagogy, attitude of teachers, transparency and fairness in internal evaluations, placement possibilities, curricular and extra-curricular activities, overall impression and suggestions about the college. Selection of respondents was done using the stratified random sampling method from the students of each branch at UG and PG level separately. Before proceeding for the survey, the Age, College Name, Gender, academic programme being pursued by the student were confirmed. After making the students aware about the instructions, motive and her/his willingness to answer the complete set of questions, the responses were recorded on SSS

form by student volunteers. In some cases students had to be called twice or thrice to suit their convenient time to answer the complete set of questions. The respondents were assured that their identity would not be disclosed.

Analysis and the findings:

The responses collected from students responses were fed to SPSS package program sheet designed for the analysis by the team. The responses were analysed by a team of teachers. The question-wise outcome of the results is presented below:

1. How much of the syllabus was covered in the class?
2. How well did the teachers prepare for the classes?
3. How well were the teachers able to communicate?
4. The teacher's approach to teaching can best be described as
5. Fairness of the internal evaluation process by the teachers.
6. Was your performance in assignments discussed with you?
7. The institute takes active interest in promoting internship, student exchange, field visit opportunities for students.
8. The teaching and mentoring process in your institution facilitates you in cognitive, social and emotional growth.
9. The institution provides multiple opportunities to learn and grow.
10. Teachers inform you about your expected competencies, course outcomes and programme outcomes.
11. Your mentor does a necessary follow-up with an assigned task to you.
12. The teachers illustrate the concepts through examples and applications.
13. The teachers identify your strengths and encourage you with providing right level of challenges.
14. Teachers are able to identify your weaknesses and help you to overcome them.
15. The institution makes effort to engage students in the monitoring, review and continuous quality improvement of the teaching learning process.
16. The institute/ teachers use student centric methods, such as experiential learning, participative learning and problem solving methodologies for enhancing learning experiences.
17. Teachers encourage you to participate in extracurricular activities.

18. Efforts are made by the institute/ teachers to inculcate soft skills, life skills and employability skills to make you ready for the world of work
19. What percentage of teachers use ICT tools such as LCD projector, Multimedia, etc. while teaching.
20. The overall quality of teaching-learning process in your institute is very good.
21. Students observations/suggestions to improve the overall teaching – learning experience in your institution

Key findings from the survey

1. Out of the total 408 respondents 36.5 percent are female and 63.5 percent are male. The PG student's participation is also considerable.
2. A high percentage of students complete satisfaction over the quality of Teaching Learning in our college.
3. Students have expressed overall satisfaction regarding the syllabus completion and laboratory experiments, preparedness of the teachers and communications with the students
4. Students have appreciated the teachers attitude towards teaching and fairness in evaluation. However, they have requested for more student exchange programmes.
5. Teacher's preparation, communication, use of appropriate teaching pedagogy and fairness of internal evaluation (75 %) has been rated high in the survey.
6. The college provides ample opportunities for cultural activities, sports activities and extra-curricular activities. The students have opined that college also provides good environment for emotional growth of students.
7. The students have expressed satisfaction regarding the mentorship programme, skill development programme run by the college. They have
8. Students appreciated teaching and implementation of learning outcome based curriculum which includes continuous evaluation and assessment of students throughout the semester.
9. Students have also acknowledged interdisciplinary learning programmes, NCC Camps, NSS Camps, organisation of various seminars. This has helped students in learning other subjects/ practicals which were beyond their prescribed curriculum.

The SSS has also pointed out few grey areas where the college/ teachers/ departments do have scope for enhancement in quality of education.

They are as follows:

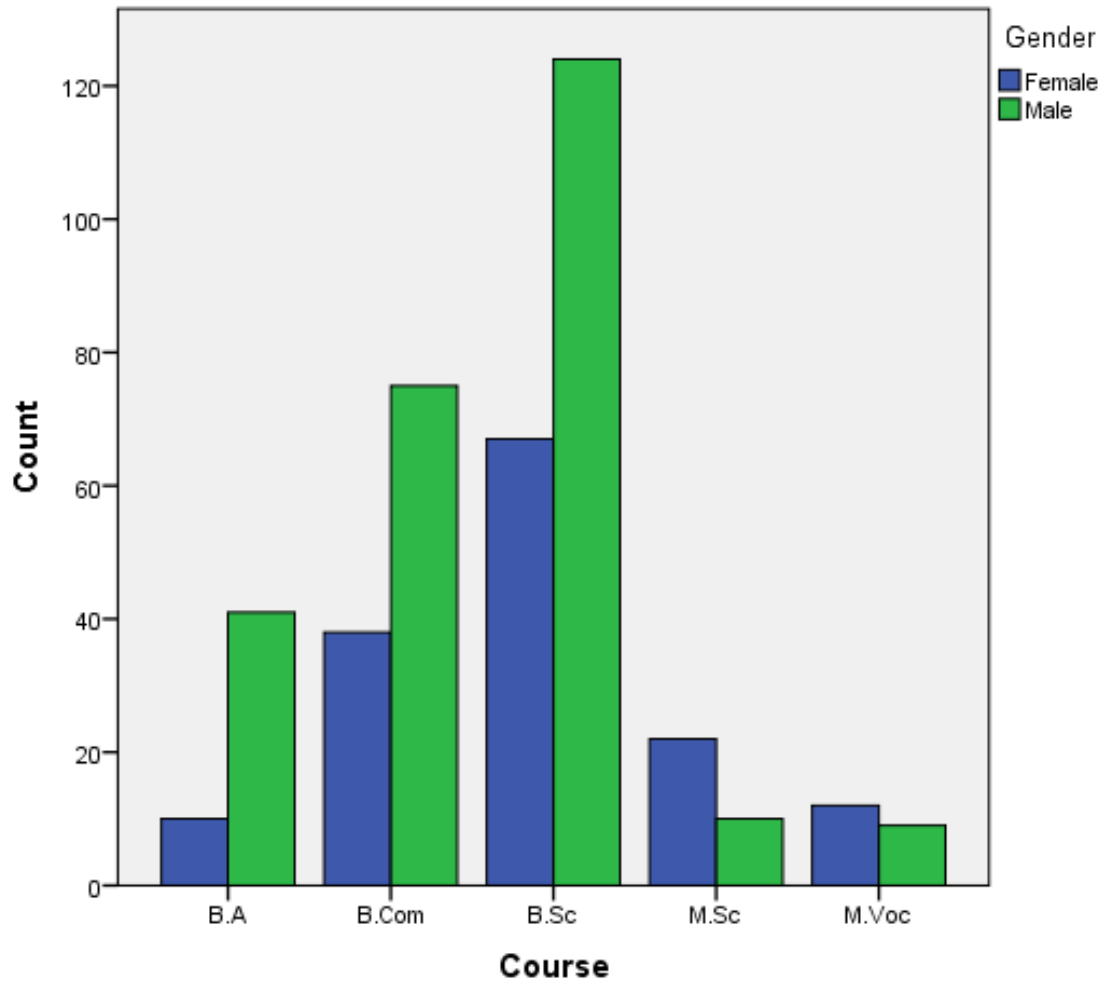
1. Institute needs to promote internship especially for some subjects in faculty of Arts, student exchange and field visit opportunities.
2. Formulate mechanism which will identify strength and weakness of students and provide them right level of challenges and help them to overcome their weakness.
3. Enhance use of ICT in teaching and equip laboratories with multiple copies of small instruments.
4. Teachers should encourage research culture amongst students.
5. More emphasis on skill development and hands on assignments, inclusion of seminars, workshops and field visits for typically one subject.
6. Active mentorship especially for career guidance is to be provided on warfoot basis.
7. Arranging Campus drives is also another suggestion made by good number of students.
8. Some of the students are asking for better facilities in toilets.

The IQAC and College Authority give utmost importance to the findings of this survey because this way students come to believe that even they have a say in policy making. This was even we try to be true to the motto of our college, “we for Students”. This approach of participative policy making is satisfying for students. It is always impossible to please everyone but often we try to strive towards keeping most of them happy, most of the time.

Course * Gender Crosstabulation

		Gender		Total
		Female	Male	
	B.A	10	41	51
		19.6%	80.4%	100.0%
	B.Com	6.7%	15.8%	12.5%
		38	75	113
Course	B.Sc	33.6%	66.4%	100.0%
		25.5%	29.0%	27.7%
	M.Sc	67	124	191
		35.1%	64.9%	100.0%
	M.Voc	45.0%	47.9%	46.8%
		22	10	32
Total		68.8%	31.2%	100.0%
		14.8%	3.9%	7.8%
		12	9	21
		57.1%	42.9%	100.0%
		8.1%	3.5%	5.1%
		149	259	408
		36.5%	63.5%	100.0%
		100.0%	100.0%	100.0%

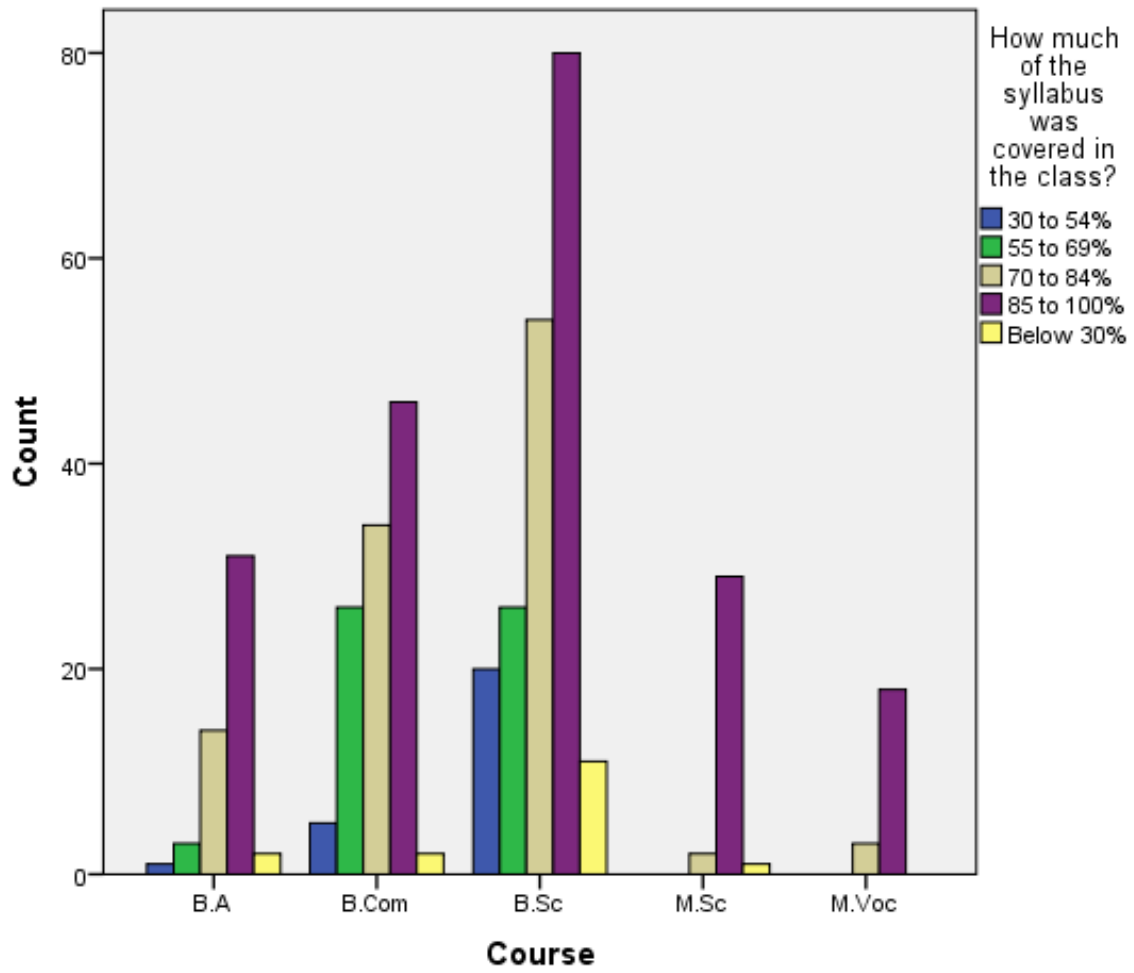
Bar Chart



Course * How much of the syllabus was covered in the class? Crosstabulation

		How much of the syllabus was covered in the class?					Total
		30 to 54%	55 to 69%	70 to 84%	85 to 100%	Below 30%	
	B.A	1	3	14	31	2	51
		2.0%	5.9%	27.5%	60.8%	3.9%	100.0%
	B.Com	3.8%	5.5%	13.1%	15.2%	12.5%	12.5%
		5	26	34	46	2	113
Course	B.Sc	4.4%	23.0%	30.1%	40.7%	1.8%	100.0%
		19.2%	47.3%	31.8%	22.5%	12.5%	27.7%
	M.Sc	20	26	54	80	11	191
		10.5%	13.6%	28.3%	41.9%	5.8%	100.0%
	M.Voc	76.9%	47.3%	50.5%	39.2%	68.8%	46.8%
		0	0	2	29	1	32
	M.Sc	0.0%	0.0%	6.2%	90.6%	3.1%	100.0%
		0.0%	0.0%	1.9%	14.2%	6.2%	7.8%
	M.Voc	0	0	3	18	0	21
		0.0%	0.0%	14.3%	85.7%	0.0%	100.0%
Total		0.0%	0.0%	2.8%	8.8%	0.0%	5.1%
		26	55	107	204	16	408
		6.4%	13.5%	26.2%	50.0%	3.9%	100.0%
		100.0%	100.0%	100.0%	100.0%	100.0%	100.0%

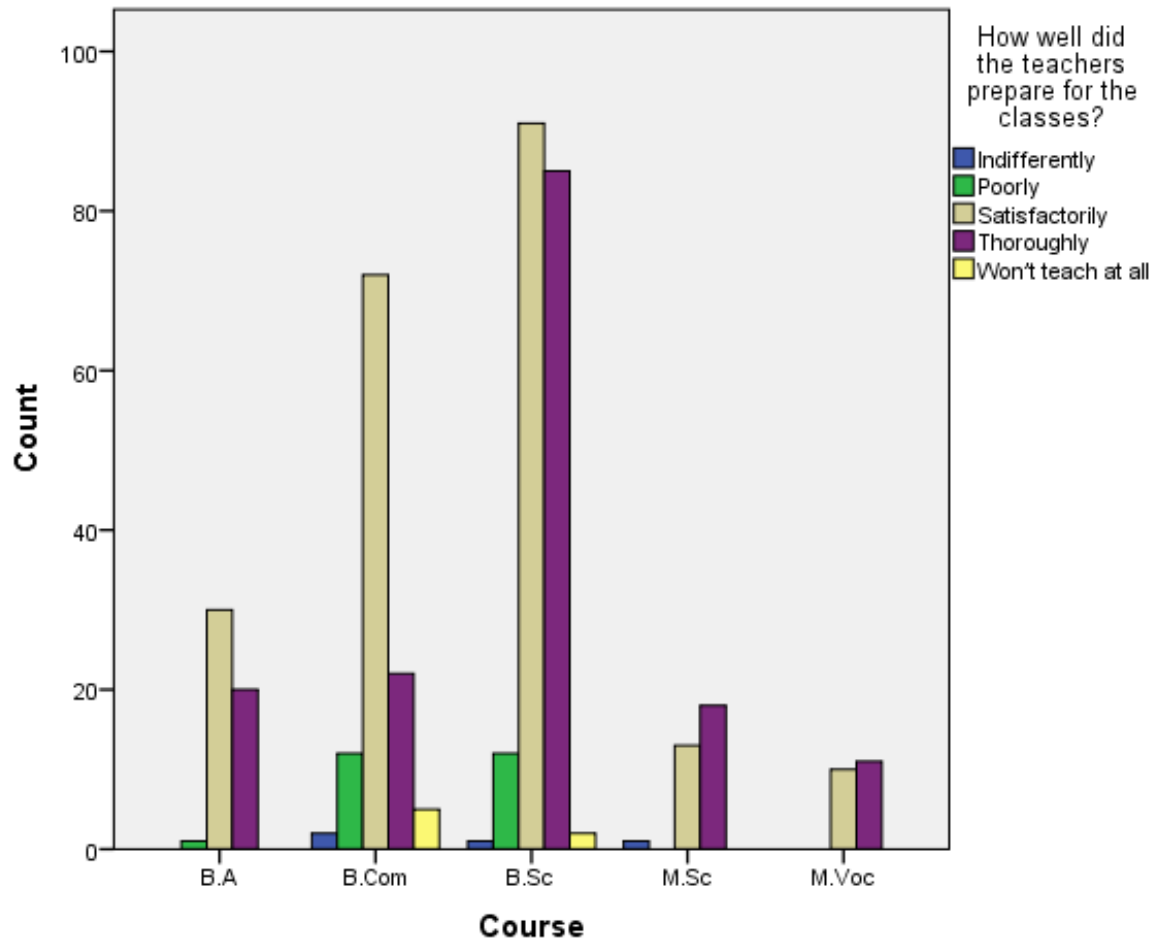
Bar Chart



Course * How well did the teachers prepare for the classes? Crosstabulation

		How well did the teachers prepare for the classes?					Total
		Indifferently	Poorly	Satisfactorily	Thoroughly	Won't teach at all	
Course	B.A	0	1	30	20	0	51
		0.0%	2.0%	58.8%	39.2%	0.0%	100.0%
	B.Com	0.0%	4.0%	13.9%	12.8%	0.0%	12.5%
		2	12	72	22	5	113
	B.Sc	1.8%	10.6%	63.7%	19.5%	4.4%	100.0%
		50.0%	48.0%	33.3%	14.1%	71.4%	27.7%
	M.Sc	1	12	91	85	2	191
		0.5%	6.3%	47.6%	44.5%	1.0%	100.0%
	M.Voc	25.0%	48.0%	42.1%	54.5%	28.6%	46.8%
		1	0	13	18	0	32
	Total	3.1%	0.0%	40.6%	56.2%	0.0%	100.0%
		25.0%	0.0%	6.0%	11.5%	0.0%	7.8%
		0	0	10	11	0	21
		0.0%	0.0%	47.6%	52.4%	0.0%	100.0%
		0.0%	0.0%	4.6%	7.1%	0.0%	5.1%
		4	25	216	156	7	408
		1.0%	6.1%	52.9%	38.2%	1.7%	100.0%
		100.0%	100.0%	100.0%	100.0%	100.0%	100.0%

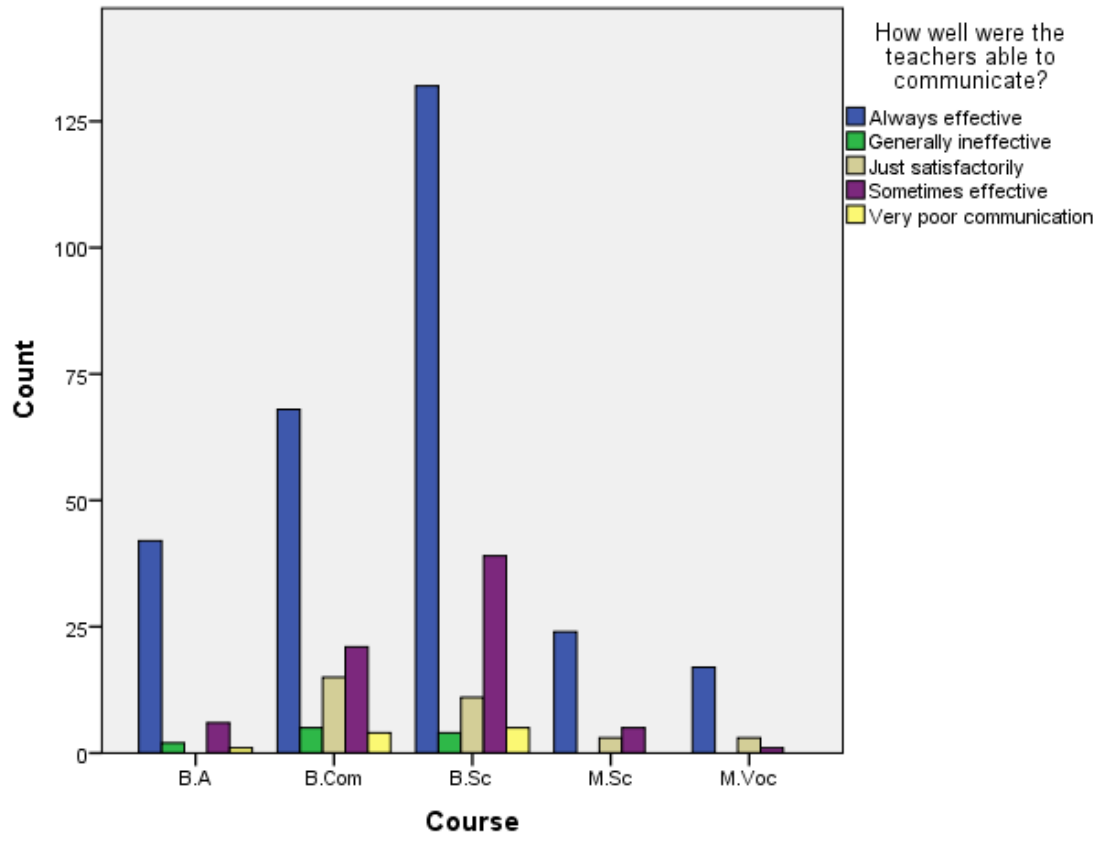
Bar Chart



Course * How well were the teachers able to communicate? Crosstabulation

		How well were the teachers able to communicate?					Total
		Always effective	Generally ineffective	Just satisfactorily	Sometimes effective	Very poor communication	
Course	B.A	42	2	0	6	1	51
		82.4%	3.9%	0.0%	11.8%	2.0%	100.0%
		14.8%	18.2%	0.0%	8.3%	10.0%	12.5%
		68	5	15	21	4	113
	B.Com	60.2%	4.4%	13.3%	18.6%	3.5%	100.0%
		24.0%	45.5%	46.9%	29.2%	40.0%	27.7%
Course	B.Sc	132	4	11	39	5	191
		69.1%	2.1%	5.8%	20.4%	2.6%	100.0%
		46.6%	36.4%	34.4%	54.2%	50.0%	46.8%
		24	0	3	5	0	32
	M.Sc	75.0%	0.0%	9.4%	15.6%	0.0%	100.0%
		8.5%	0.0%	9.4%	6.9%	0.0%	7.8%
Course	M.Voc	17	0	3	1	0	21
		81.0%	0.0%	14.3%	4.8%	0.0%	100.0%
		6.0%	0.0%	9.4%	1.4%	0.0%	5.1%
		283	11	32	72	10	408
Total		69.4%	2.7%	7.8%	17.6%	2.5%	100.0%
		100.0%	100.0%	100.0%	100.0%	100.0%	100.0%

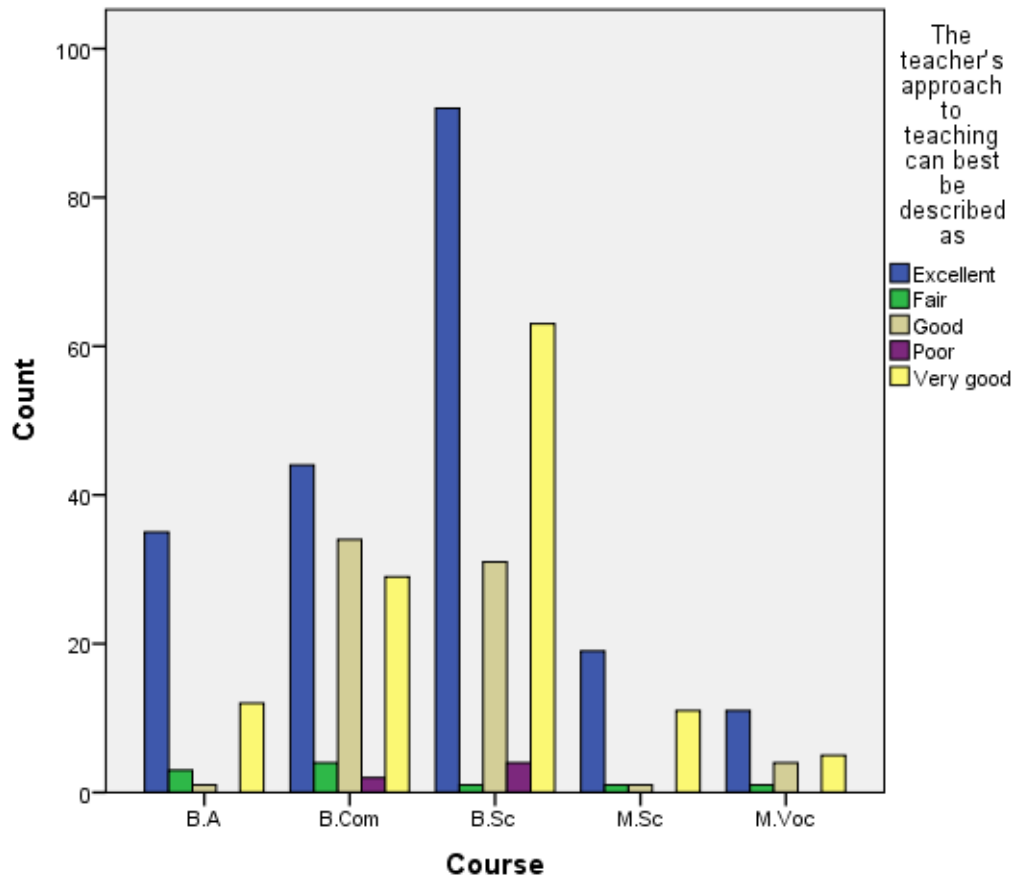
Bar Chart



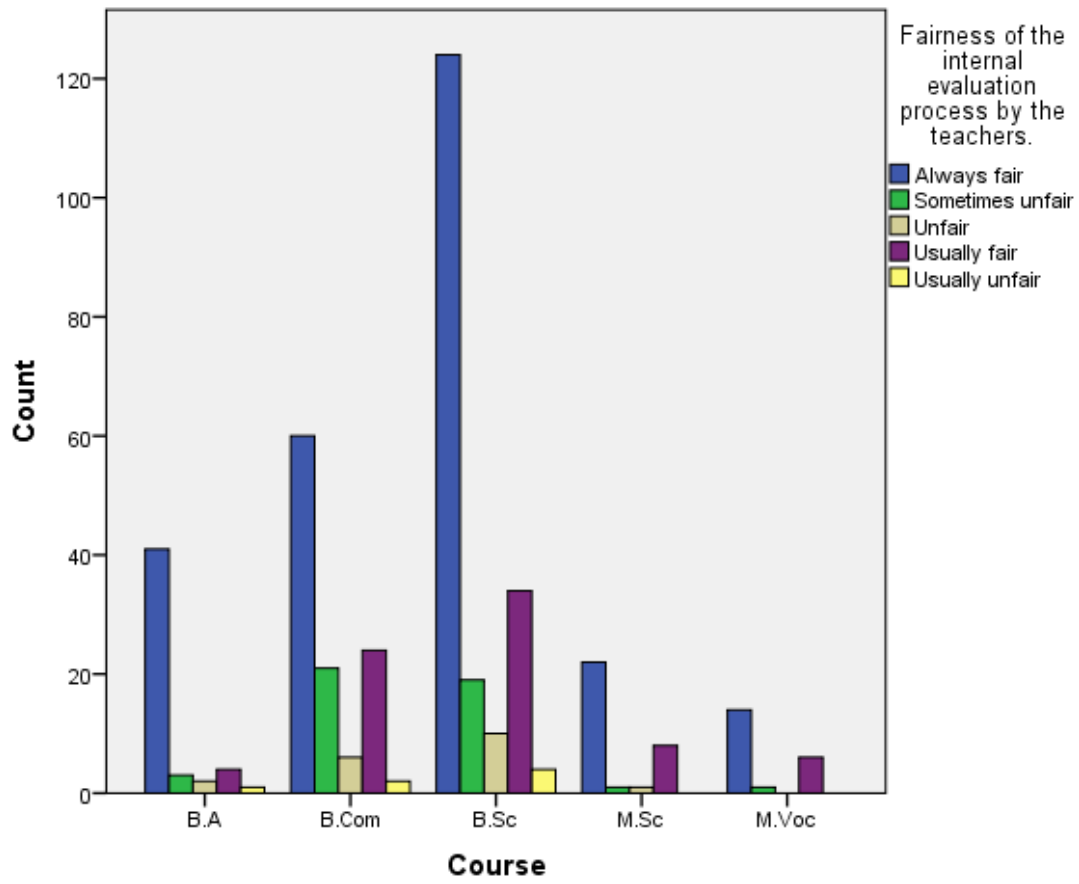
Course * The teacher's approach to teaching can best be described as Crosstabulation

		The teacher's approach to teaching can best be described as					Total
		Excellent	Fair	Good	Poor	Very good	
Course	B.A	35	3	1	0	12	51
		68.6%	5.9%	2.0%	0.0%	23.5%	100.0%
	B.Com	17.4%	30.0%	1.4%	0.0%	10.0%	12.5%
		44	4	34	2	29	113
	B.Sc	38.9%	3.5%	30.1%	1.8%	25.7%	100.0%
		21.9%	40.0%	47.9%	33.3%	24.2%	27.7%
	M.Sc	92	1	31	4	63	191
		48.2%	0.5%	16.2%	2.1%	33.0%	100.0%
	M.Voc	45.8%	10.0%	43.7%	66.7%	52.5%	46.8%
		19	1	1	0	11	32
	Total	59.4%	3.1%	3.1%	0.0%	34.4%	100.0%
		9.5%	10.0%	1.4%	0.0%	9.2%	7.8%
		11	1	4	0	5	21
		52.4%	4.8%	19.0%	0.0%	23.8%	100.0%
		5.5%	10.0%	5.6%	0.0%	4.2%	5.1%
		201	10	71	6	120	408
	Total	49.3%	2.5%	17.4%	1.5%	29.4%	100.0%
		100.0%	100.0%	100.0%	100.0%	100.0%	100.0%

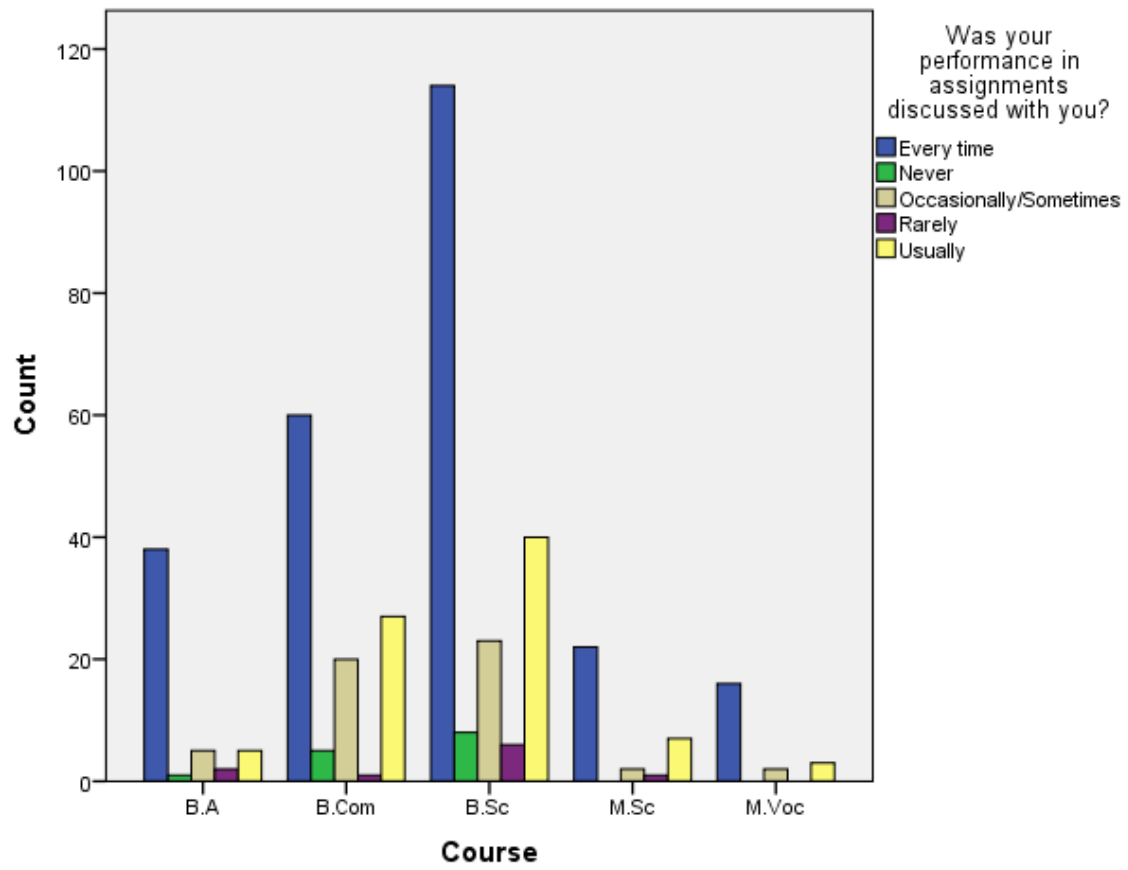
Bar Chart



Bar Chart



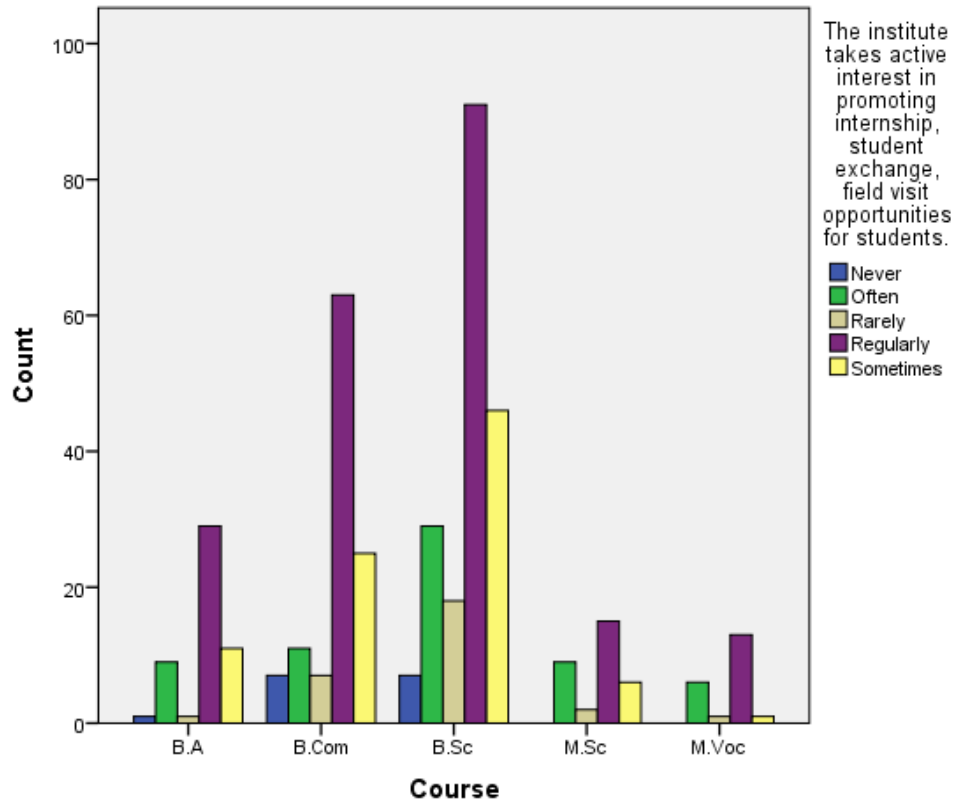
Bar Chart



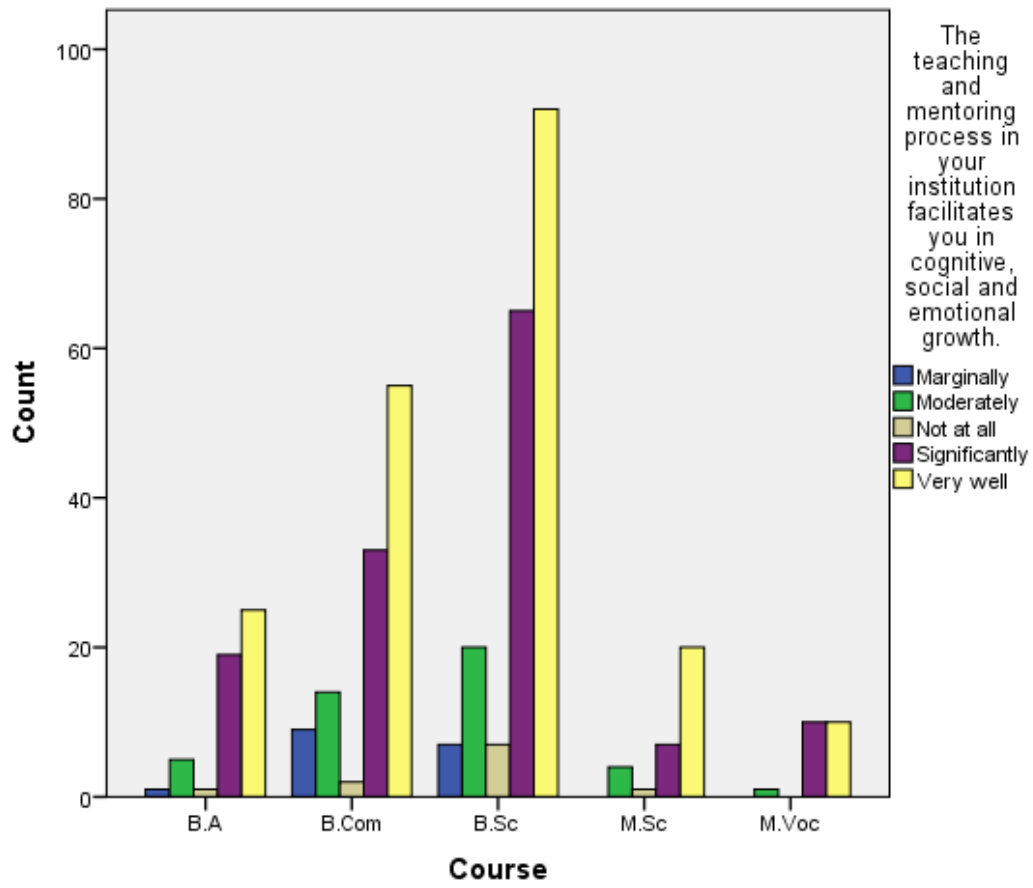
Course * The institute takes active interest in promoting internship, student exchange, field visit opportunities for students. Crosstabulation

		The institute takes active interest in promoting internship, student exchange, field visit opportunities for students.					Total
		Never	Often	Rarely	Regularly	Sometimes	
	B.A	1	9	1	29	11	51
		2.0%	17.6%	2.0%	56.9%	21.6%	100.0%
	B.Com	6.7%	14.1%	3.4%	13.7%	12.4%	12.5%
		7	11	7	63	25	113
	B.Sc	6.2%	9.7%	6.2%	55.8%	22.1%	100.0%
		46.7%	17.2%	24.1%	29.9%	28.1%	27.7%
Course	M.Sc	7	29	18	91	46	191
		3.7%	15.2%	9.4%	47.6%	24.1%	100.0%
	M.Voc	46.7%	45.3%	62.1%	43.1%	51.7%	46.8%
		0	9	2	15	6	32
	Total	0.0%	28.1%	6.2%	46.9%	18.8%	100.0%
		0.0%	14.1%	6.9%	7.1%	6.7%	7.8%
		0	6	1	13	1	21
		0.0%	28.6%	4.8%	61.9%	4.8%	100.0%
		0.0%	9.4%	3.4%	6.2%	1.1%	5.1%
		15	64	29	211	89	408
Total		3.7%	15.7%	7.1%	51.7%	21.8%	100.0%
		100.0%	100.0%	100.0%	100.0%	100.0%	100.0%

Bar Chart



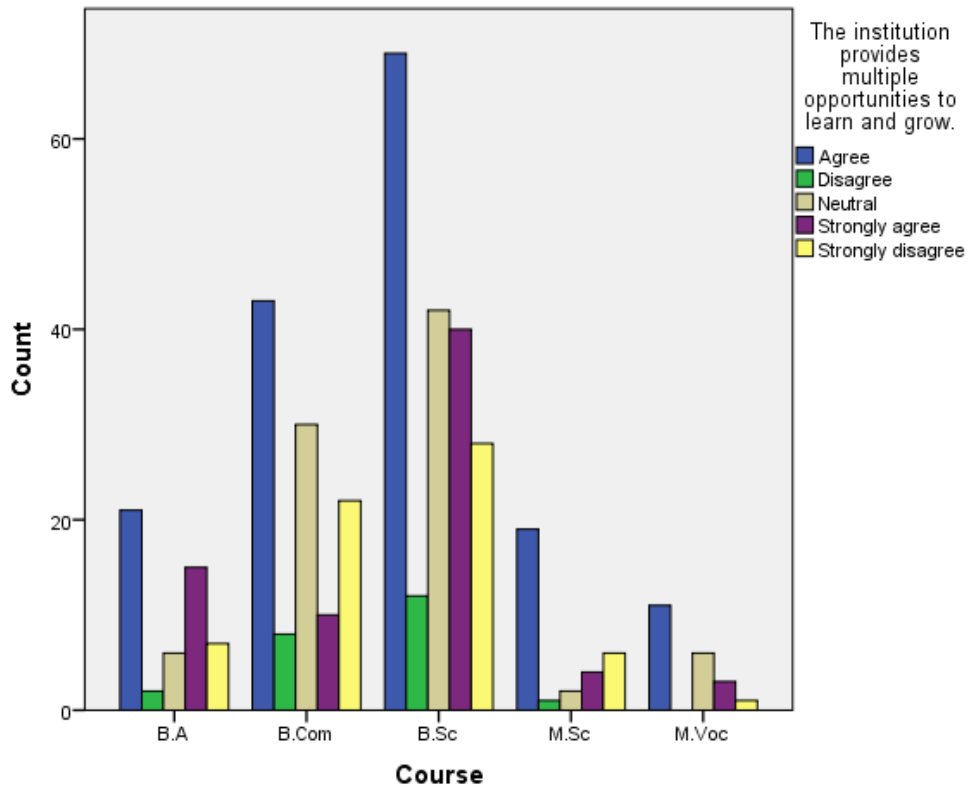
Bar Chart



Course * The institution provides multiple opportunities to learn and grow. Crosstabulation

		The institution provides multiple opportunities to learn and grow.					Total
		Agree	Disagree	Neutral	Strongly agree	Strongly disagree	
Course	B.A	21	2	6	15	7	51
		41.2%	3.9%	11.8%	29.4%	13.7%	100.0%
	B.Com	12.9%	8.7%	7.0%	20.8%	10.9%	12.5%
		43	8	30	10	22	113
	B.Sc	38.1%	7.1%	26.5%	8.8%	19.5%	100.0%
		26.4%	34.8%	34.9%	13.9%	34.4%	27.7%
	M.Sc	69	12	42	40	28	191
		36.1%	6.3%	22.0%	20.9%	14.7%	100.0%
	M.Voc	42.3%	52.2%	48.8%	55.6%	43.8%	46.8%
		19	1	2	4	6	32
	Total	59.4%	3.1%	6.2%	12.5%	18.8%	100.0%
		11.7%	4.3%	2.3%	5.6%	9.4%	7.8%
		11	0	6	3	1	21
		52.4%	0.0%	28.6%	14.3%	4.8%	100.0%
		6.7%	0.0%	7.0%	4.2%	1.6%	5.1%
		163	23	86	72	64	408
	Total	40.0%	5.6%	21.1%	17.6%	15.7%	100.0%
		100.0%	100.0%	100.0%	100.0%	100.0%	100.0%

Bar Chart

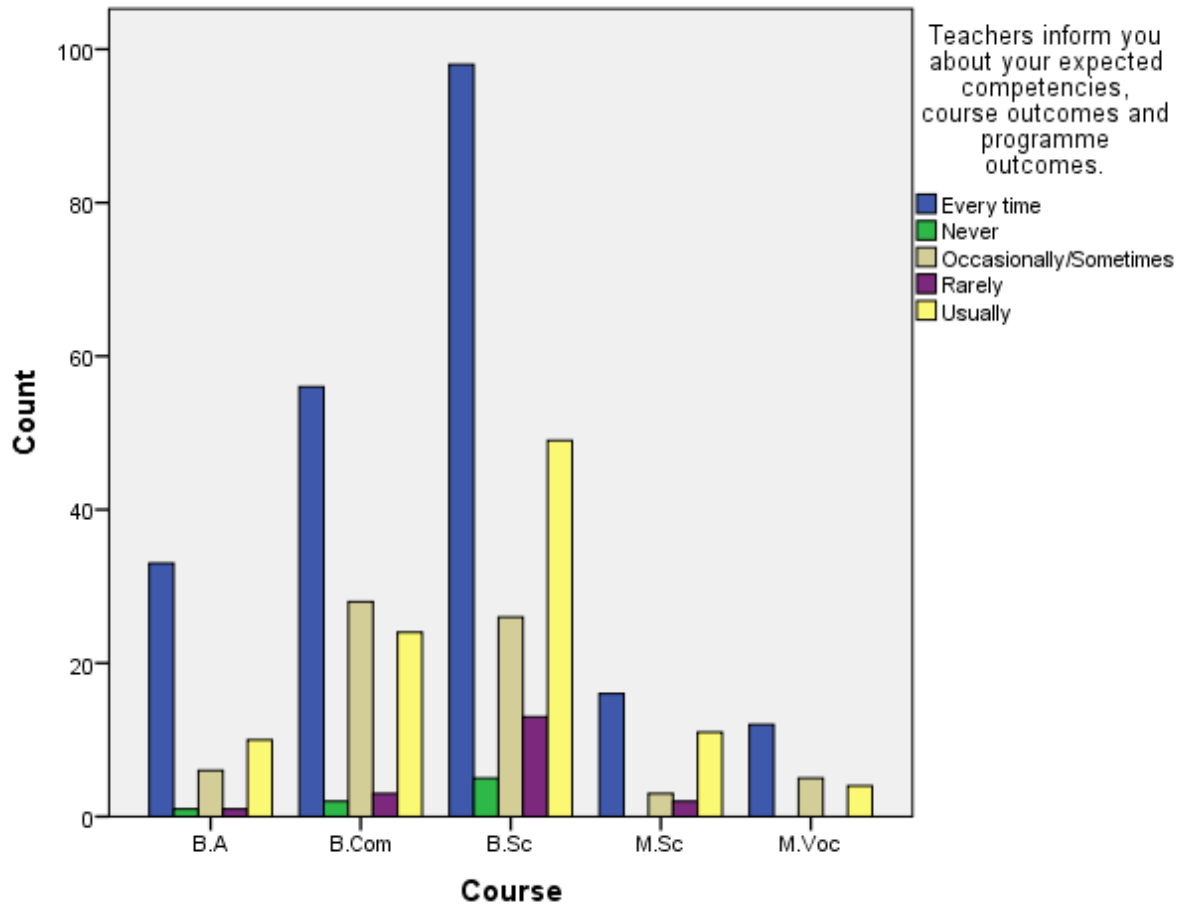


Course * Teachers inform you about your expected competencies, course outcomes and programme outcomes.

Crosstabulation

		Teachers inform you about your expected competencies, course outcomes and programme outcomes.					Total
		Every time	Never	Occasionally/Sometimes	Rarely	Usually	
Course	B.A	33	1	6	1	10	51
		64.7%	2.0%	11.8%	2.0%	19.6%	100.0%
	B.Com	15.3%	12.5%	8.8%	5.3%	10.2%	12.5%
		56	2	28	3	24	113
	B.Sc	49.6%	1.8%	24.8%	2.7%	21.2%	100.0%
		26.0%	25.0%	41.2%	15.8%	24.5%	27.7%
	M.Sc	98	5	26	13	49	191
		51.3%	2.6%	13.6%	6.8%	25.7%	100.0%
	M.Voc	45.6%	62.5%	38.2%	68.4%	50.0%	46.8%
		16	0	3	2	11	32
	Total	50.0%	0.0%	9.4%	6.2%	34.4%	100.0%
		7.4%	0.0%	4.4%	10.5%	11.2%	7.8%
		12	0	5	0	4	21
		57.1%	0.0%	23.8%	0.0%	19.0%	100.0%
		5.6%	0.0%	7.4%	0.0%	4.1%	5.1%
		215	8	68	19	98	408
		52.7%	2.0%	16.7%	4.7%	24.0%	100.0%
		100.0%	100.0%	100.0%	100.0%	100.0%	100.0%

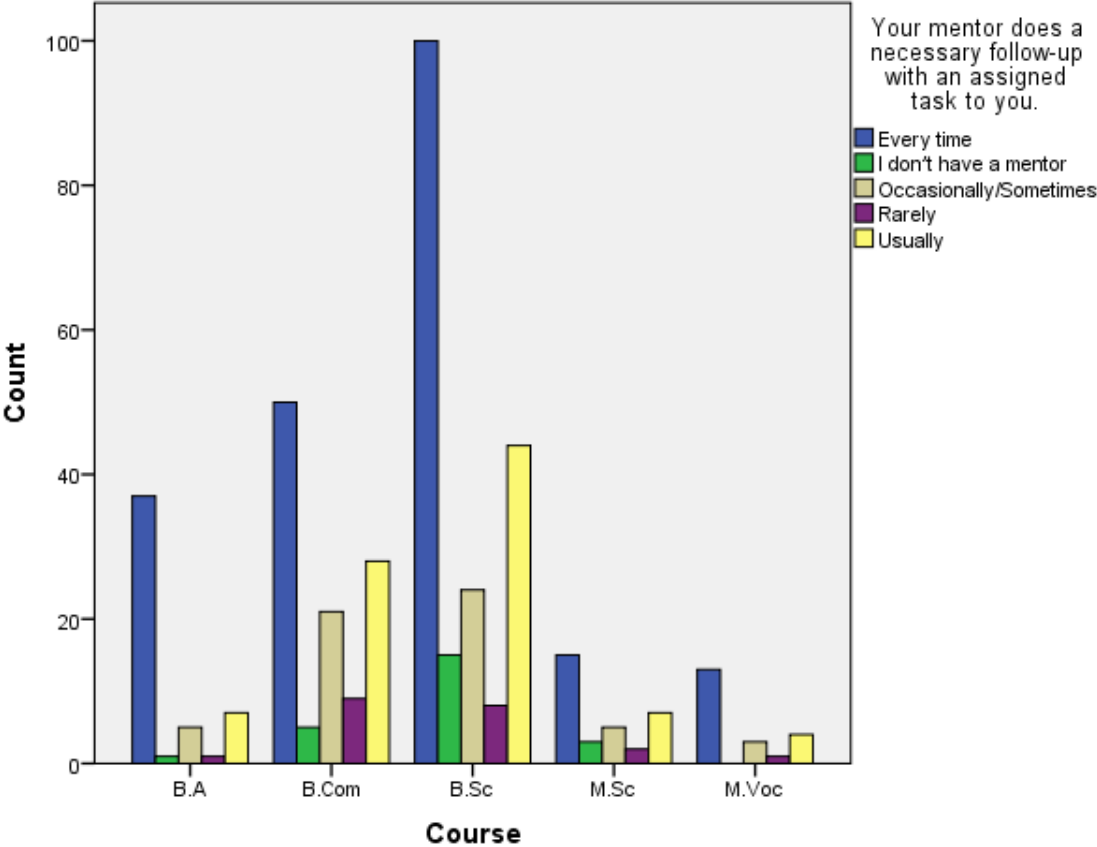
Bar Chart



Course * Your mentor does a necessary follow-up with an assigned task to you. Crosstabulation

		Your mentor does a necessary follow-up with an assigned task to you.					Total
		Every time	I don't have a mentor	Occasionally/Sometimes	Rarely	Usually	
Course	B.A	37	1	5	1	7	51
		72.5%	2.0%	9.8%	2.0%	13.7%	100.0%
	B.Com	17.2%	4.2%	8.6%	4.8%	7.8%	12.5%
		50	5	21	9	28	113
	B.Sc	44.2%	4.4%	18.6%	8.0%	24.8%	100.0%
		23.3%	20.8%	36.2%	42.9%	31.1%	27.7%
	M.Sc	100	15	24	8	44	191
		52.4%	7.9%	12.6%	4.2%	23.0%	100.0%
	M.Voc	46.5%	62.5%	41.4%	38.1%	48.9%	46.8%
		15	3	5	2	7	32
	Total	46.9%	9.4%	15.6%	6.2%	21.9%	100.0%
		7.0%	12.5%	8.6%	9.5%	7.8%	7.8%
		13	0	3	1	4	21
		61.9%	0.0%	14.3%	4.8%	19.0%	100.0%
		6.0%	0.0%	5.2%	4.8%	4.4%	5.1%
		215	24	58	21	90	408
		52.7%	5.9%	14.2%	5.1%	22.1%	100.0%
		100.0%	100.0%	100.0%	100.0%	100.0%	100.0%

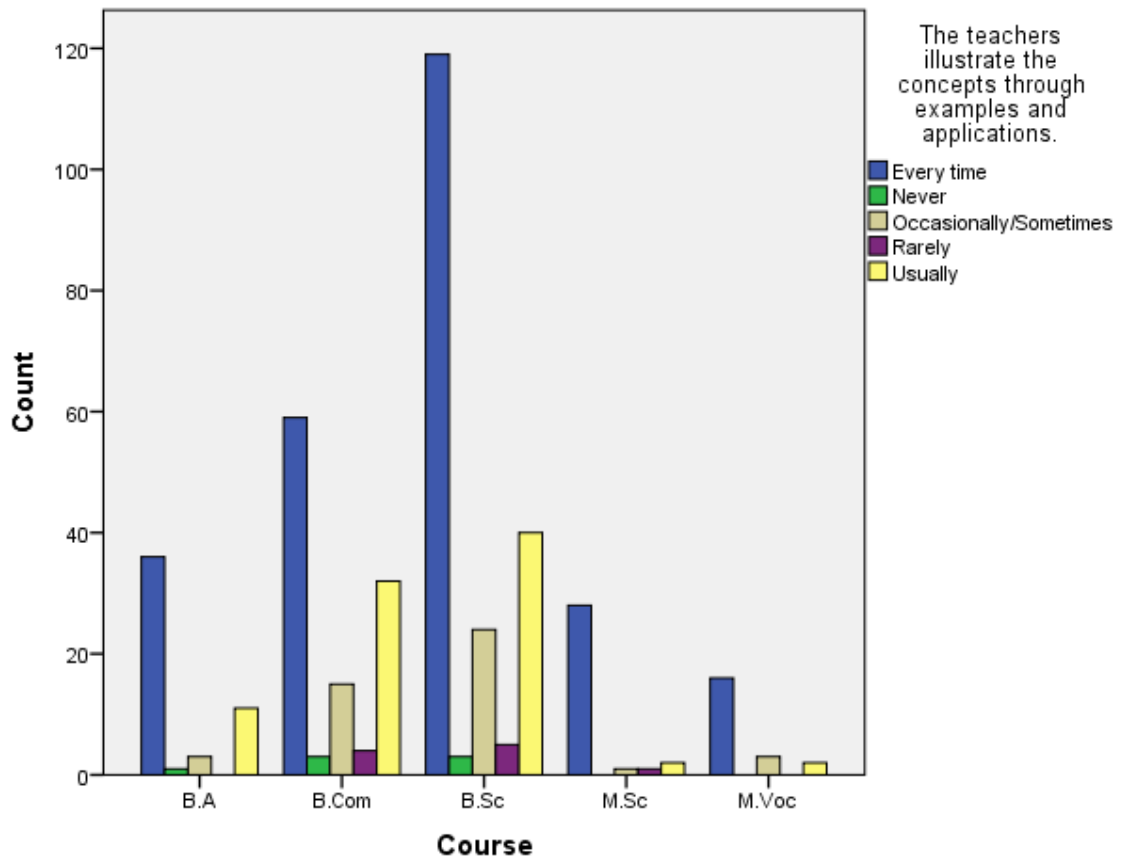
Bar Chart



Course * The teachers illustrate the concepts through examples and applications. Crosstabulation

		The teachers illustrate the concepts through examples and applications.					Total
		Every time	Never	Occasionally/Sometimes	Rarely	Usually	
Course	B.A	36	1	3	0	11	51
		70.6%	2.0%	5.9%	0.0%	21.6%	100.0%
	B.Com	14.0%	14.3%	6.5%	0.0%	12.6%	12.5%
		59	3	15	4	32	113
	B.Sc	52.2%	2.7%	13.3%	3.5%	28.3%	100.0%
		22.9%	42.9%	32.6%	40.0%	36.8%	27.7%
	M.Sc	119	3	24	5	40	191
		62.3%	1.6%	12.6%	2.6%	20.9%	100.0%
	M.Voc	46.1%	42.9%	52.2%	50.0%	46.0%	46.8%
		28	0	1	1	2	32
	Total	87.5%	0.0%	3.1%	3.1%	6.2%	100.0%
		10.9%	0.0%	2.2%	10.0%	2.3%	7.8%
		16	0	3	0	2	21
		76.2%	0.0%	14.3%	0.0%	9.5%	100.0%
		6.2%	0.0%	6.5%	0.0%	2.3%	5.1%
		258	7	46	10	87	408
	Total	63.2%	1.7%	11.3%	2.5%	21.3%	100.0%
		100.0%	100.0%	100.0%	100.0%	100.0%	100.0%

Bar Chart

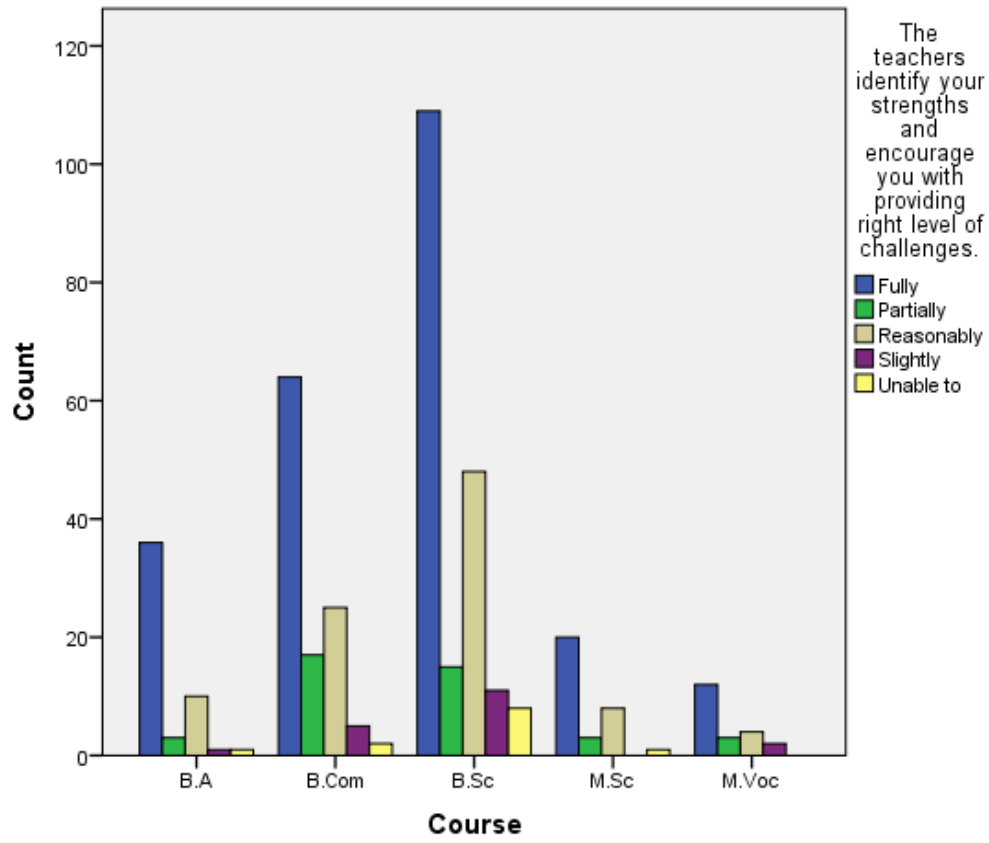


Course * The teachers identify your strengths and encourage you with providing right level of challenges.

Crosstabulation

		The teachers identify your strengths and encourage you with providing right level of challenges.					Total
		Fully	Partially	Reasonably	Slightly	Unable to	
Course	B.A	36	3	10	1	1	51
		70.6%	5.9%	19.6%	2.0%	2.0%	100.0%
	B.Com	14.9%	7.3%	10.5%	5.3%	8.3%	12.5%
		64	17	25	5	2	113
	B.Sc	56.6%	15.0%	22.1%	4.4%	1.8%	100.0%
		26.6%	41.5%	26.3%	26.3%	16.7%	27.7%
	M.Sc	109	15	48	11	8	191
		57.1%	7.9%	25.1%	5.8%	4.2%	100.0%
	M.Voc	45.2%	36.6%	50.5%	57.9%	66.7%	46.8%
		20	3	8	0	1	32
	Total	62.5%	9.4%	25.0%	0.0%	3.1%	100.0%
		8.3%	7.3%	8.4%	0.0%	8.3%	7.8%
		12	3	4	2	0	21
		57.1%	14.3%	19.0%	9.5%	0.0%	100.0%
		5.0%	7.3%	4.2%	10.5%	0.0%	5.1%
		241	41	95	19	12	408
		59.1%	10.0%	23.3%	4.7%	2.9%	100.0%
		100.0%	100.0%	100.0%	100.0%	100.0%	100.0%

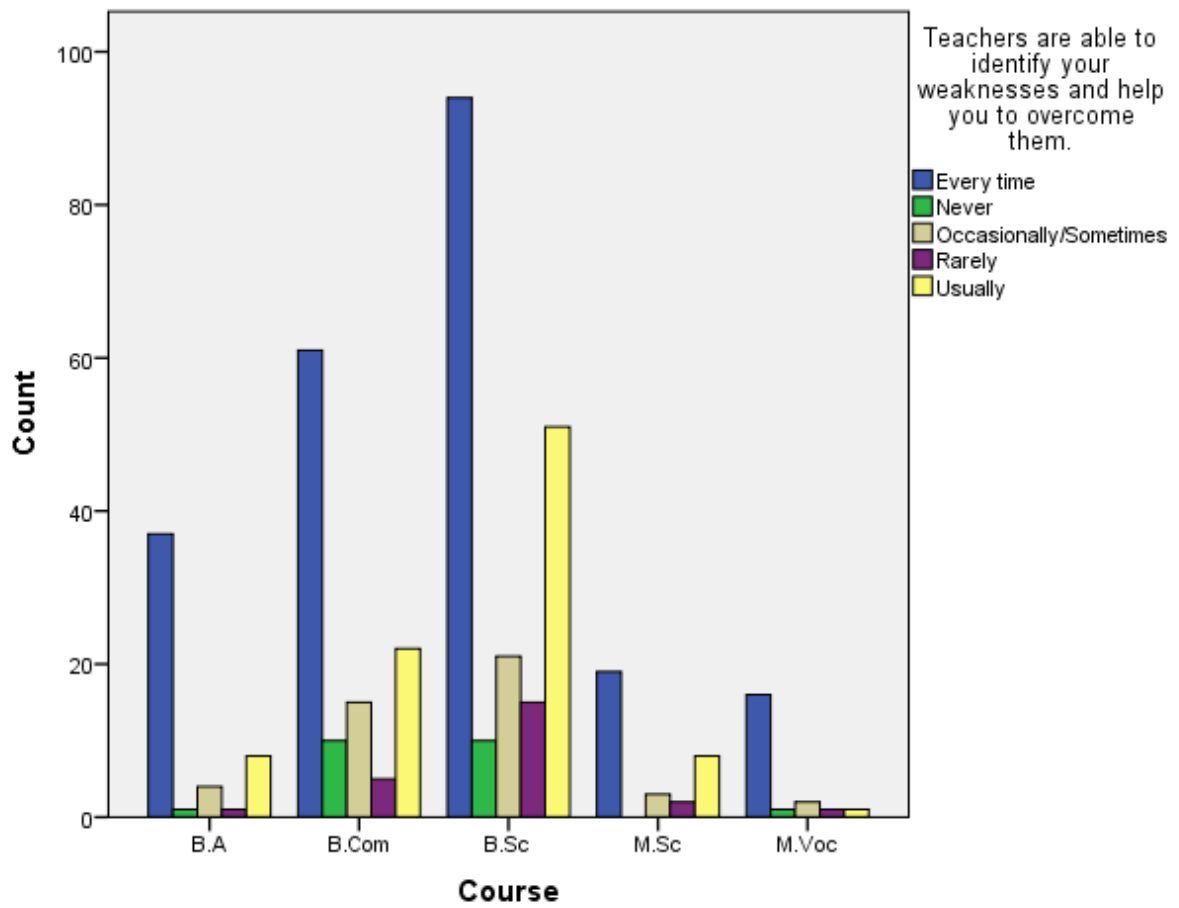
Bar Chart



Course * Teachers are able to identify your weaknesses and help you to overcome them. Crosstabulation

		Teachers are able to identify your weaknesses and help you to overcome them.					Total
		Every time	Never	Occasionally/Sometimes	Rarely	Usually	
Course	B.A	37	1	4	1	8	51
		72.5%	2.0%	7.8%	2.0%	15.7%	100.0%
	B.Com	16.3%	4.5%	8.9%	4.2%	8.9%	12.5%
		61	10	15	5	22	113
	B.Sc	54.0%	8.8%	13.3%	4.4%	19.5%	100.0%
		26.9%	45.5%	33.3%	20.8%	24.4%	27.7%
	M.Sc	94	10	21	15	51	191
		49.2%	5.2%	11.0%	7.9%	26.7%	100.0%
	M.Voc	41.4%	45.5%	46.7%	62.5%	56.7%	46.8%
		19	0	3	2	8	32
	Total	59.4%	0.0%	9.4%	6.2%	25.0%	100.0%
		8.4%	0.0%	6.7%	8.3%	8.9%	7.8%
		16	1	2	1	1	21
		76.2%	4.8%	9.5%	4.8%	4.8%	100.0%
		7.0%	4.5%	4.4%	4.2%	1.1%	5.1%
		227	22	45	24	90	408
		55.6%	5.4%	11.0%	5.9%	22.1%	100.0%
		100.0%	100.0%	100.0%	100.0%	100.0%	100.0%

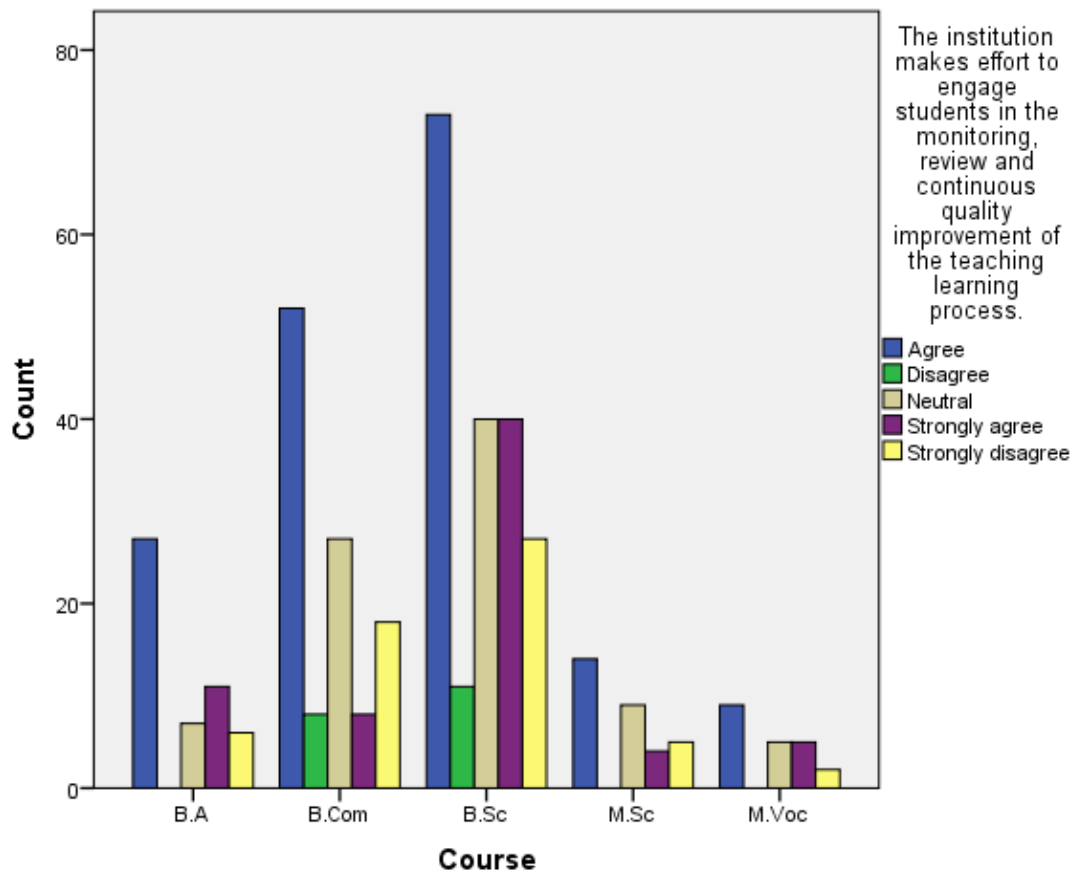
Bar Chart



Course * The institution makes effort to engage students in the monitoring, review and continuous quality improvement of the teaching learning process. Crosstabulation

	The institution makes effort to engage students in the monitoring, review and continuous quality improvement of the teaching learning process.					Total
	Agree	Disagree	Neutral	Strongly agree	Strongly disagree	
B.A	27	0	7	11	6	51
	52.9%	0.0%	13.7%	21.6%	11.8%	100.0%
B.Com	15.4%	0.0%	8.0%	16.2%	10.3%	12.5%
	52	8	27	8	18	113
B.Sc	46.0%	7.1%	23.9%	7.1%	15.9%	100.0%
	29.7%	42.1%	30.7%	11.8%	31.0%	27.7%
M.Sc	73	11	40	40	27	191
	38.2%	5.8%	20.9%	20.9%	14.1%	100.0%
M.Voc	41.7%	57.9%	45.5%	58.8%	46.6%	46.8%
	14	0	9	4	5	32
Total	43.8%	0.0%	28.1%	12.5%	15.6%	100.0%
	8.0%	0.0%	10.2%	5.9%	8.6%	7.8%
Total	9	0	5	5	2	21
	42.9%	0.0%	23.8%	23.8%	9.5%	100.0%
Total	5.1%	0.0%	5.7%	7.4%	3.4%	5.1%
	175	19	88	68	58	408
Total	42.9%	4.7%	21.6%	16.7%	14.2%	100.0%
	100.0%	100.0%	100.0%	100.0%	100.0%	100.0%

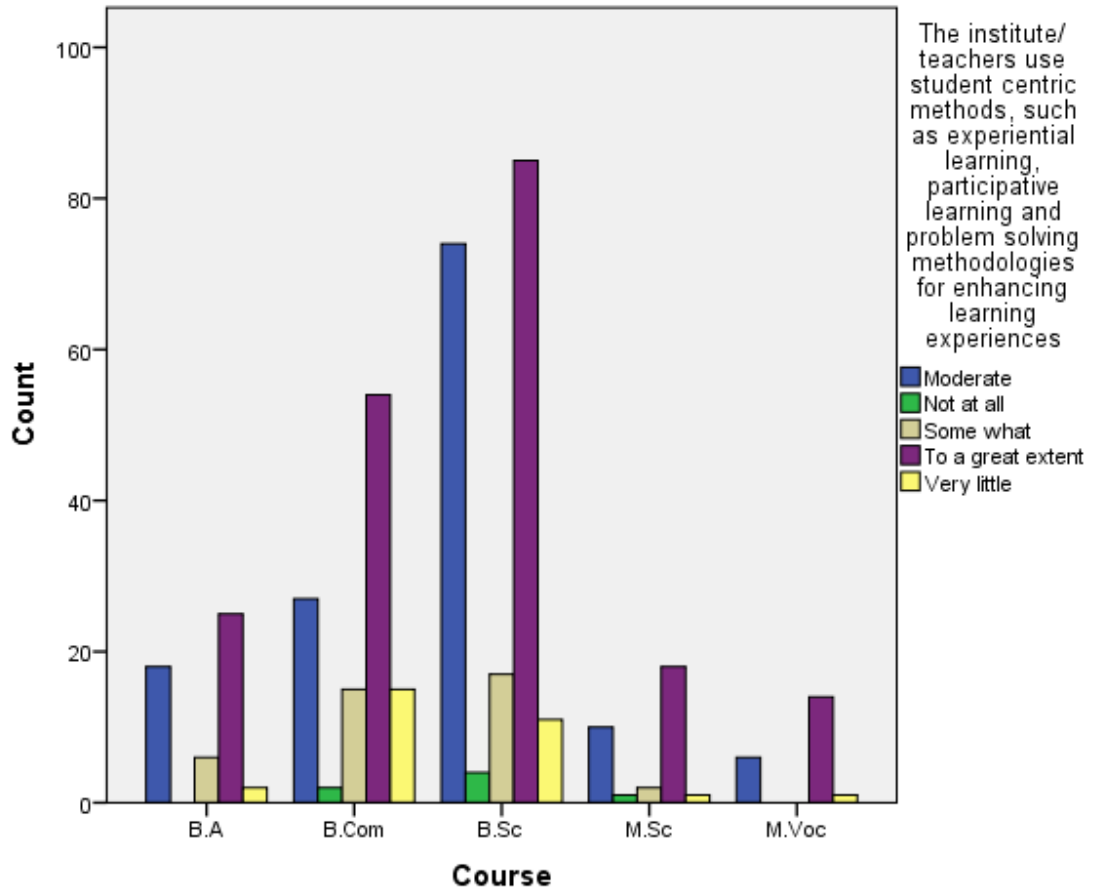
Bar Chart



Course * The institute/ teachers use student centric methods, such as experiential learning, participative learning and problem solving methodologies for enhancing learning experiences Crosstabulation

		The institute/ teachers use student centric methods, such as experiential learning, participative learning and problem solving methodologies for enhancing learning experiences					Total
		Moderate	Not at all	Some what	To a great extent	Very little	
Course	B.A	18	0	6	25	2	51
		35.3%	0.0%	11.8%	49.0%	3.9%	100.0%
B.Com		13.3%	0.0%	15.0%	12.8%	6.7%	12.5%
		27	2	15	54	15	113
B.Sc		23.9%	1.8%	13.3%	47.8%	13.3%	100.0%
		20.0%	28.6%	37.5%	27.6%	50.0%	27.7%
M.Sc		74	4	17	85	11	191
		38.7%	2.1%	8.9%	44.5%	5.8%	100.0%
M.Voc		54.8%	57.1%	42.5%	43.4%	36.7%	46.8%
		10	1	2	18	1	32
Total		31.2%	3.1%	6.2%	56.2%	3.1%	100.0%
		7.4%	14.3%	5.0%	9.2%	3.3%	7.8%
		6	0	0	14	1	21
		28.6%	0.0%	0.0%	66.7%	4.8%	100.0%
		4.4%	0.0%	0.0%	7.1%	3.3%	5.1%
		135	7	40	196	30	408
		33.1%	1.7%	9.8%	48.0%	7.4%	100.0%
		100.0%	100.0%	100.0%	100.0%	100.0%	100.0%

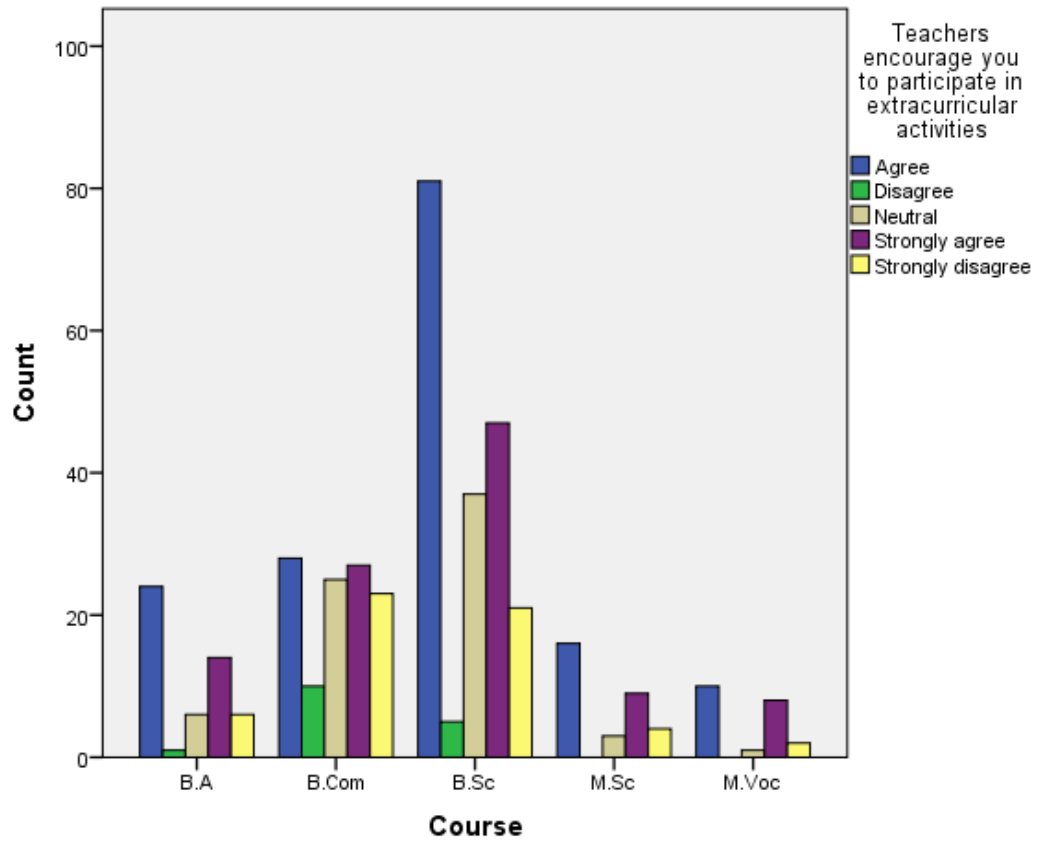
Bar Chart



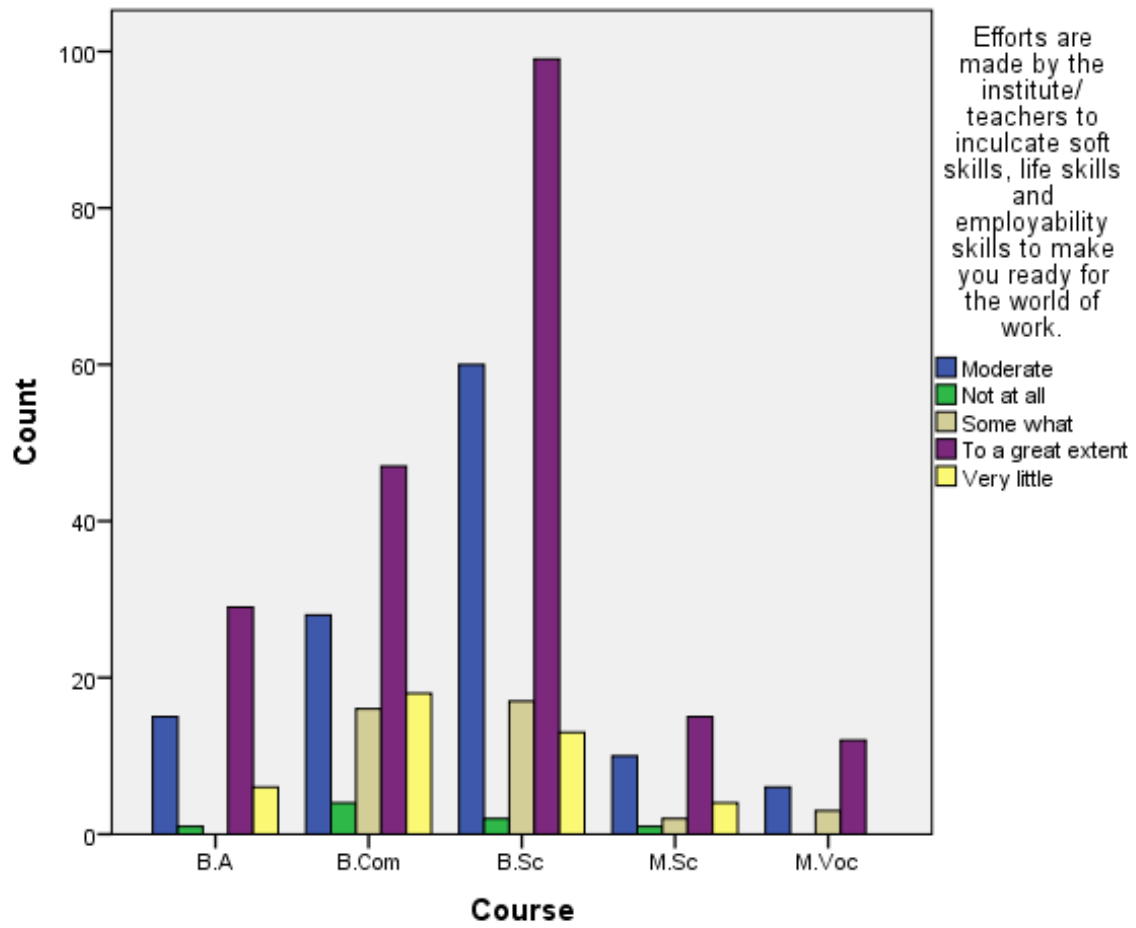
Course * Teachers encourage you to participate in extracurricular activities Crosstabulation

		Teachers encourage you to participate in extracurricular activities					Total
		Agree	Disagree	Neutral	Strongly agree	Strongly disagree	
Course	B.A	24	1	6	14	6	51
		47.1%	2.0%	11.8%	27.5%	11.8%	100.0%
B.Com		15.1%	6.2%	8.3%	13.3%	10.7%	12.5%
		28	10	25	27	23	113
B.Sc		24.8%	8.8%	22.1%	23.9%	20.4%	100.0%
		17.6%	62.5%	34.7%	25.7%	41.1%	27.7%
M.Sc		81	5	37	47	21	191
		42.4%	2.6%	19.4%	24.6%	11.0%	100.0%
M.Voc		50.9%	31.2%	51.4%	44.8%	37.5%	46.8%
		16	0	3	9	4	32
Total		50.0%	0.0%	9.4%	28.1%	12.5%	100.0%
		10.1%	0.0%	4.2%	8.6%	7.1%	7.8%
Total		10	0	1	8	2	21
		47.6%	0.0%	4.8%	38.1%	9.5%	100.0%
Total		6.3%	0.0%	1.4%	7.6%	3.6%	5.1%
		159	16	72	105	56	408
Total		39.0%	3.9%	17.6%	25.7%	13.7%	100.0%
		100.0%	100.0%	100.0%	100.0%	100.0%	100.0%

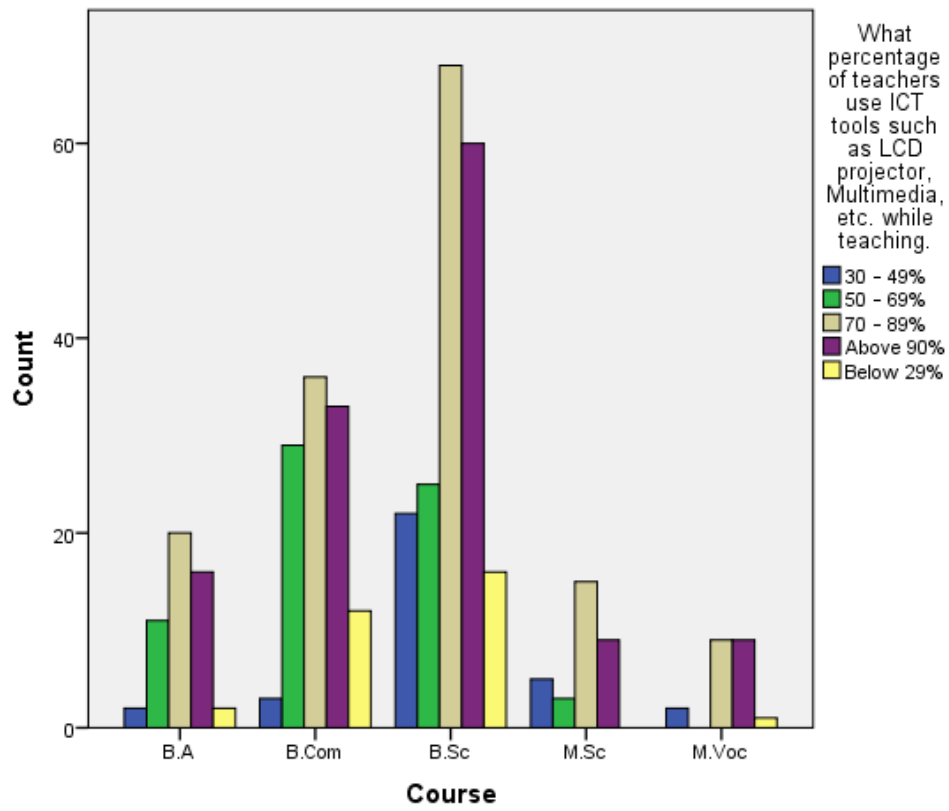
Bar Chart



Bar Chart



Bar Chart



Course * The overall quality of teaching-learning process in your institute is very good. Crosstabulation

		The overall quality of teaching-learning process in your institute is very good.				Total
		Agree	Disagree	Neutral	Strongly	
Course	B.A	22	2	3	24	51
		43.1%	3.9%	5.9%	47.1%	100.0%
	B.Com	13.5%	15.4%	4.4%	14.6%	12.5%
		46	6	24	37	113
	B.Sc	40.7%	5.3%	21.2%	32.7%	100.0%
		28.2%	46.2%	35.3%	22.6%	27.7%
	M.Sc	71	5	37	78	191
		37.2%	2.6%	19.4%	40.8%	100.0%
	M.Voc	43.6%	38.5%	54.4%	47.6%	46.8%
		15	0	2	15	32
	Total	46.9%	0.0%	6.2%	46.9%	100.0%
		9.2%	0.0%	2.9%	9.1%	7.8%
		9	0	2	10	21
		42.9%	0.0%	9.5%	47.6%	100.0%
		5.5%	0.0%	2.9%	6.1%	5.1%
		163	13	68	164	408
		40.0%	3.2%	16.7%	40.2%	100.0%
		100.0%	100.0%	100.0%	100.0%	100.0%

Bar Chart

